

Ms. Ref. No. DIFF-D-13-00077/R1

Supplementary Results

Meckelin and Jouberin are expressed in mESCs.

To validate the specificity of Meckelin and Jbn antibodies, transient transfection experiments were performed in HEK293T cells by using expression vectors for both proteins (pEGFP-Jbn, courtesy of prof. J.G. Gleeson and pCMV-HA-Meckelin, courtesy of prof. C.A.Johnson) or control empty plasmids. After 48 hours from transfection, cells were lysed and processed in western blot analyses. As shown in supplementary figure S3A, left, in HEK293T cells, which lack Meckelin, transfected with the pCMV-HA-Meckelin plasmid DNA, a band at Meckelin proper molecular weight is detected. HEK293T cells transfected with pEGFP-Jbn, greatly overexpressed the exogenous Jbn protein as shown in supplementary figure S3A, right.

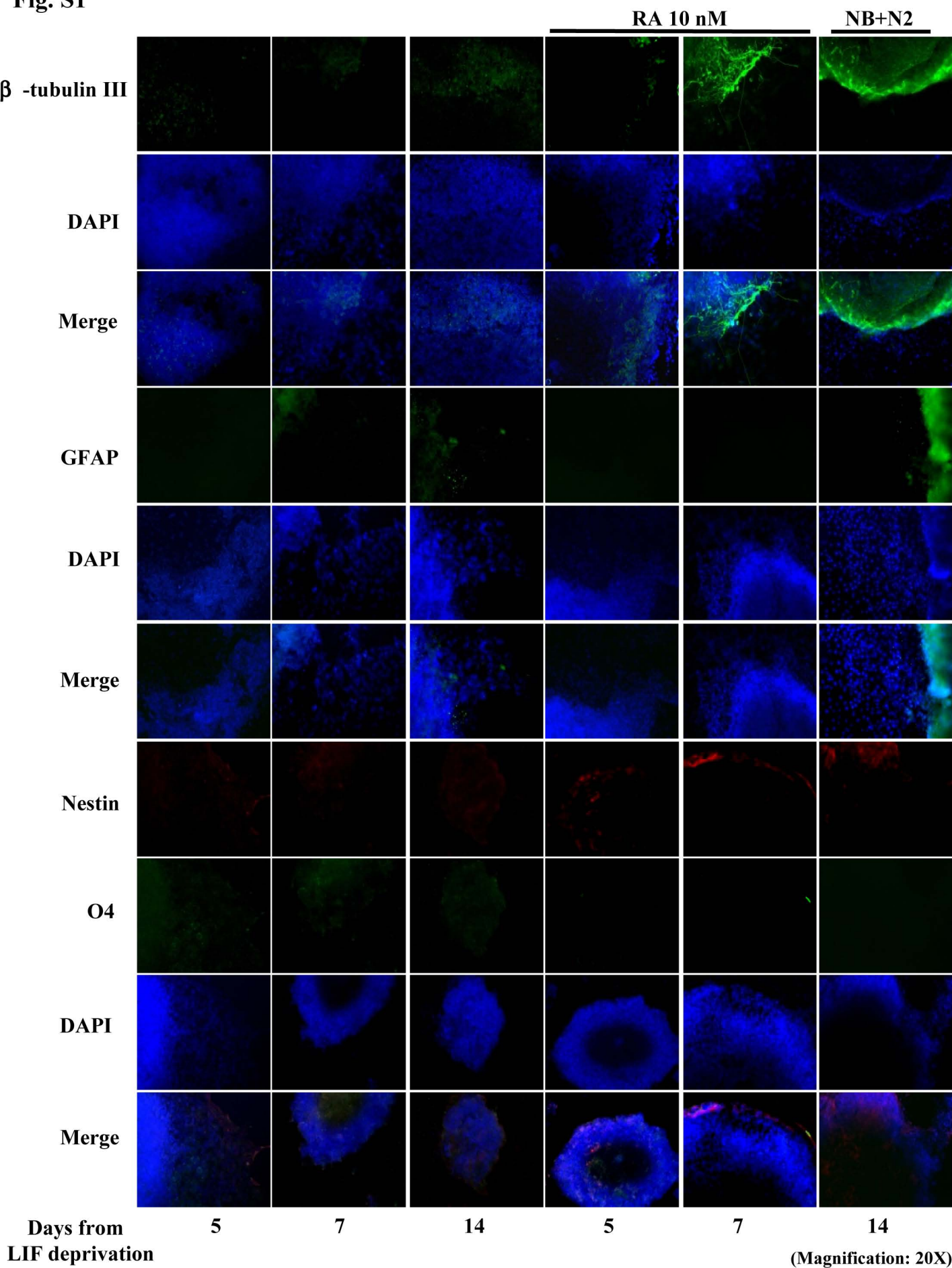
Fig. S1

Fig. S2

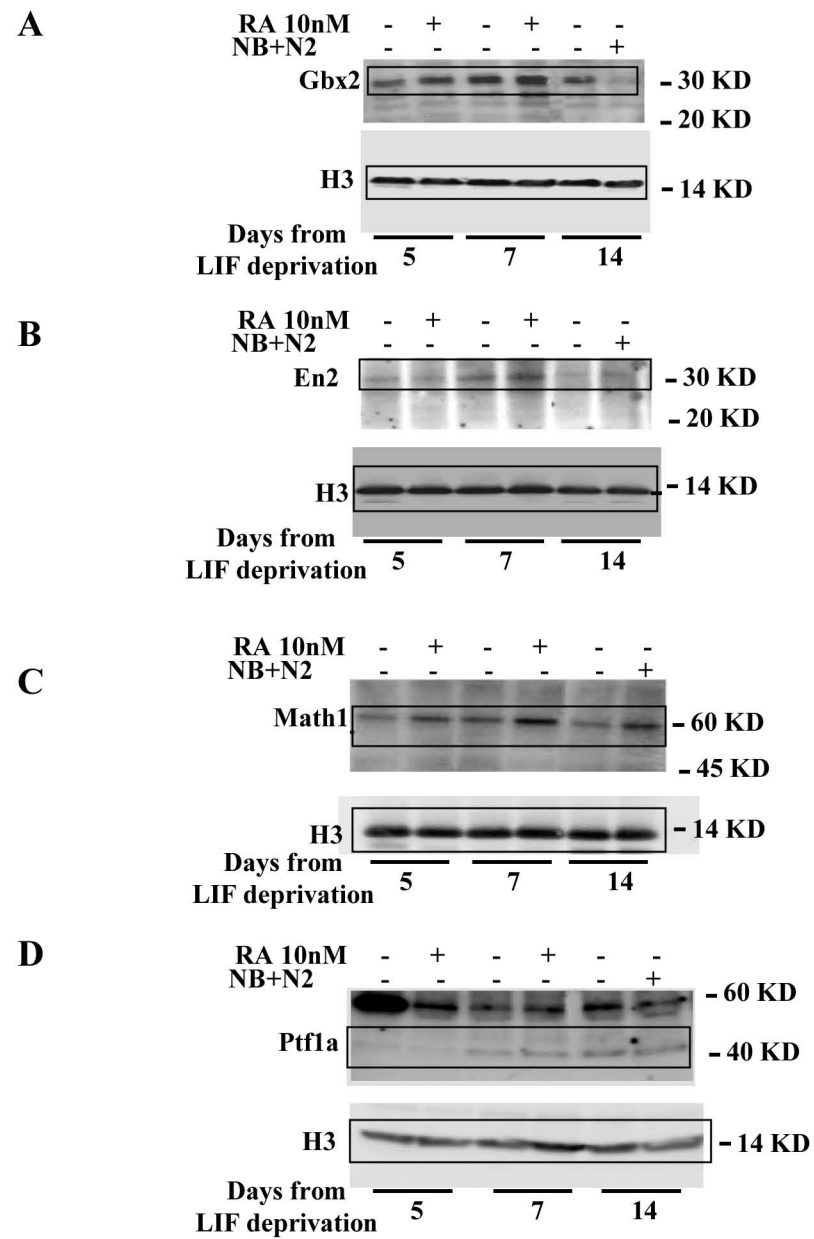
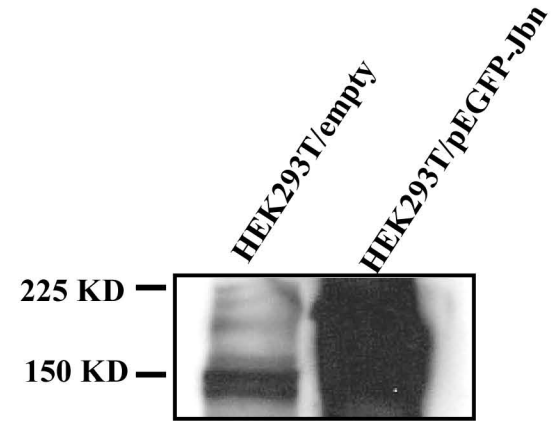
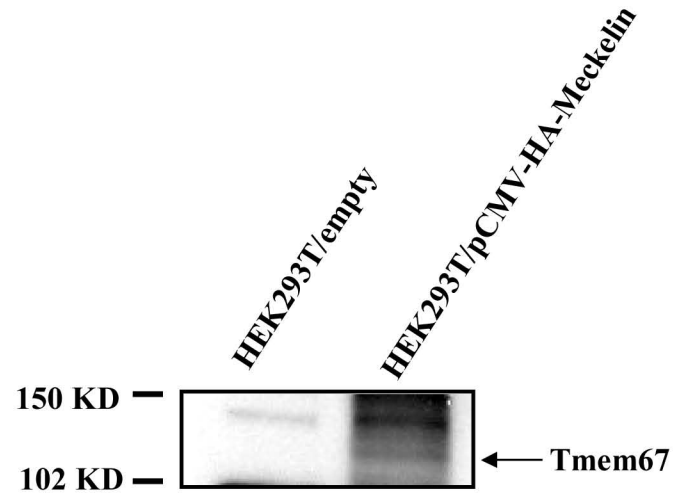


Fig. S3

A



B

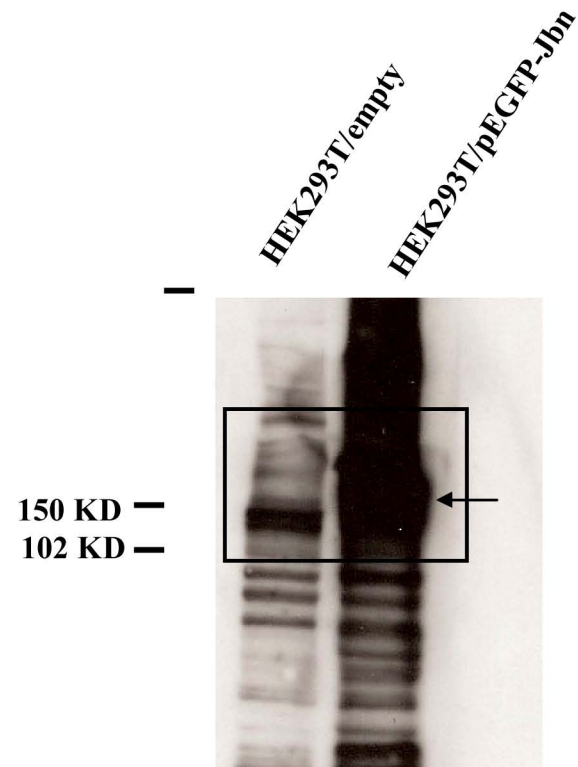
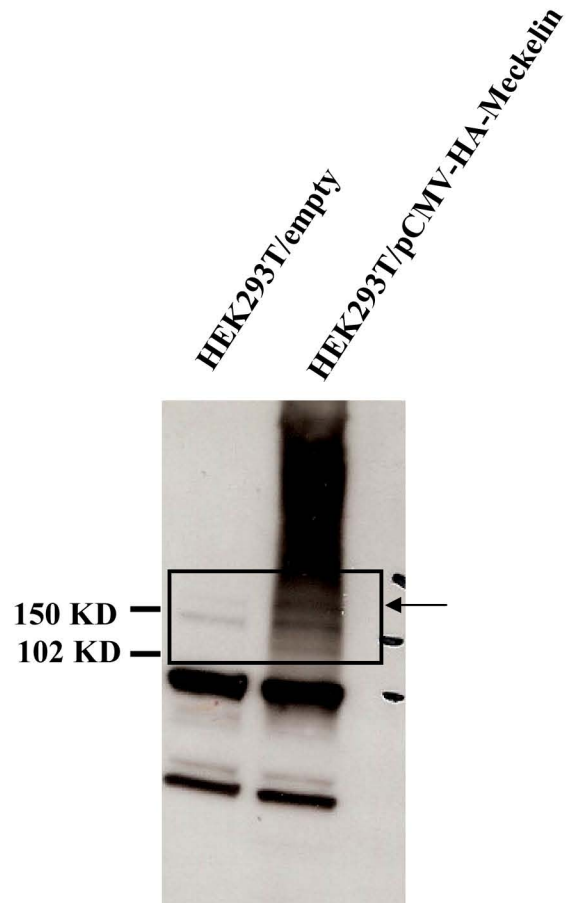
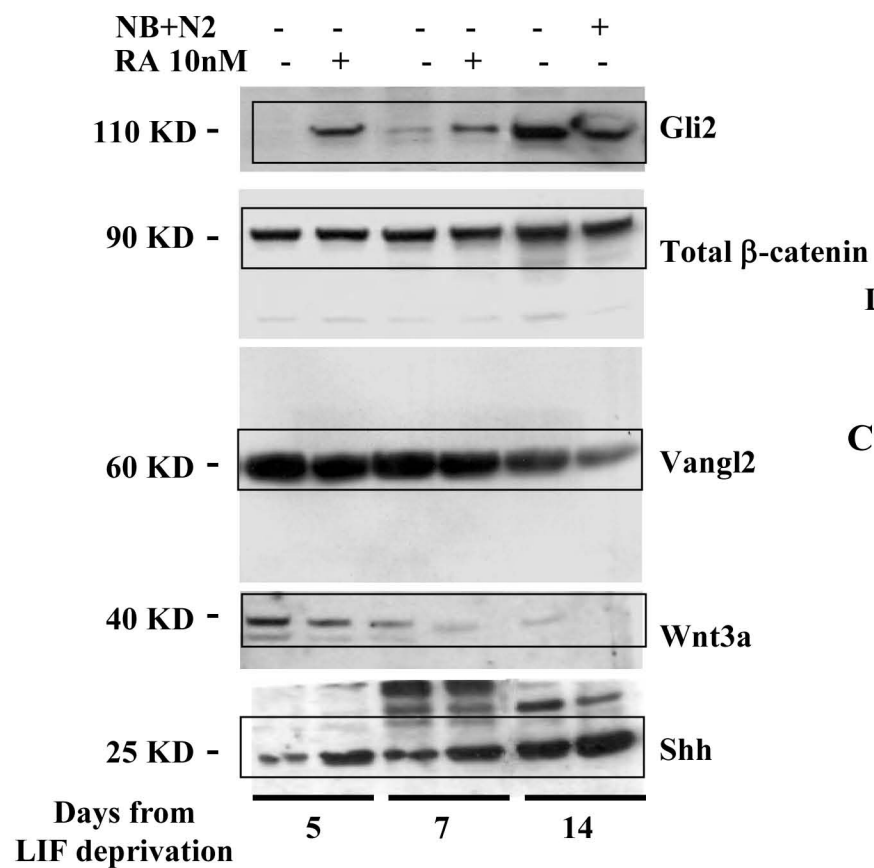
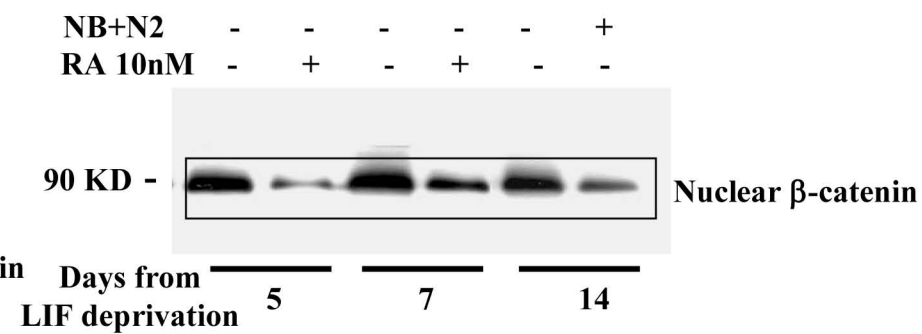


Fig. S4

A



B



C

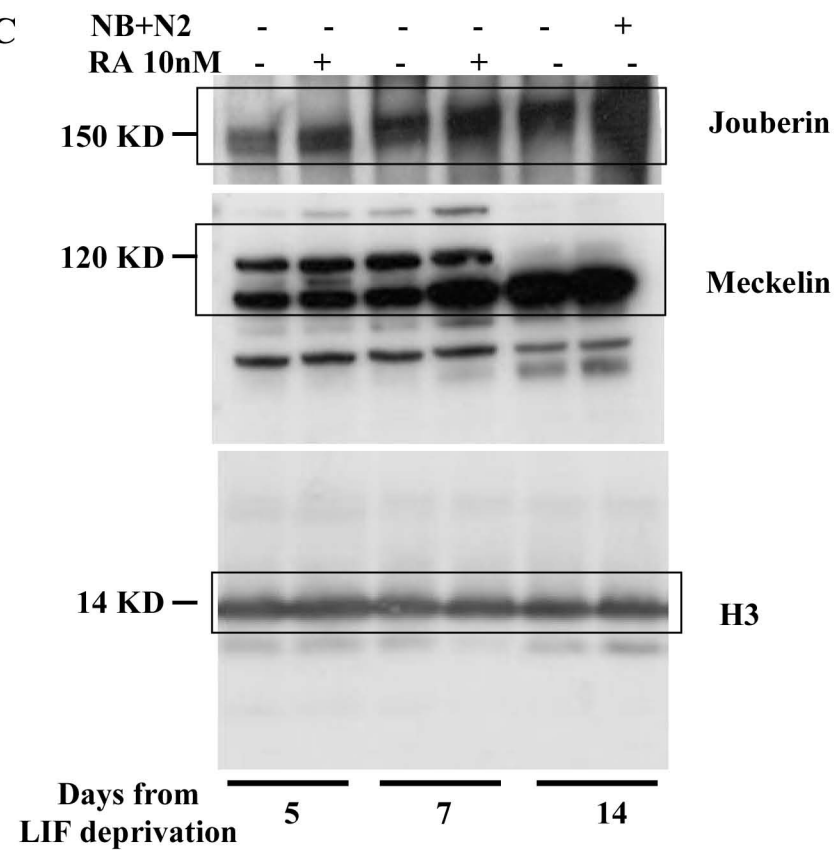


Fig. S5

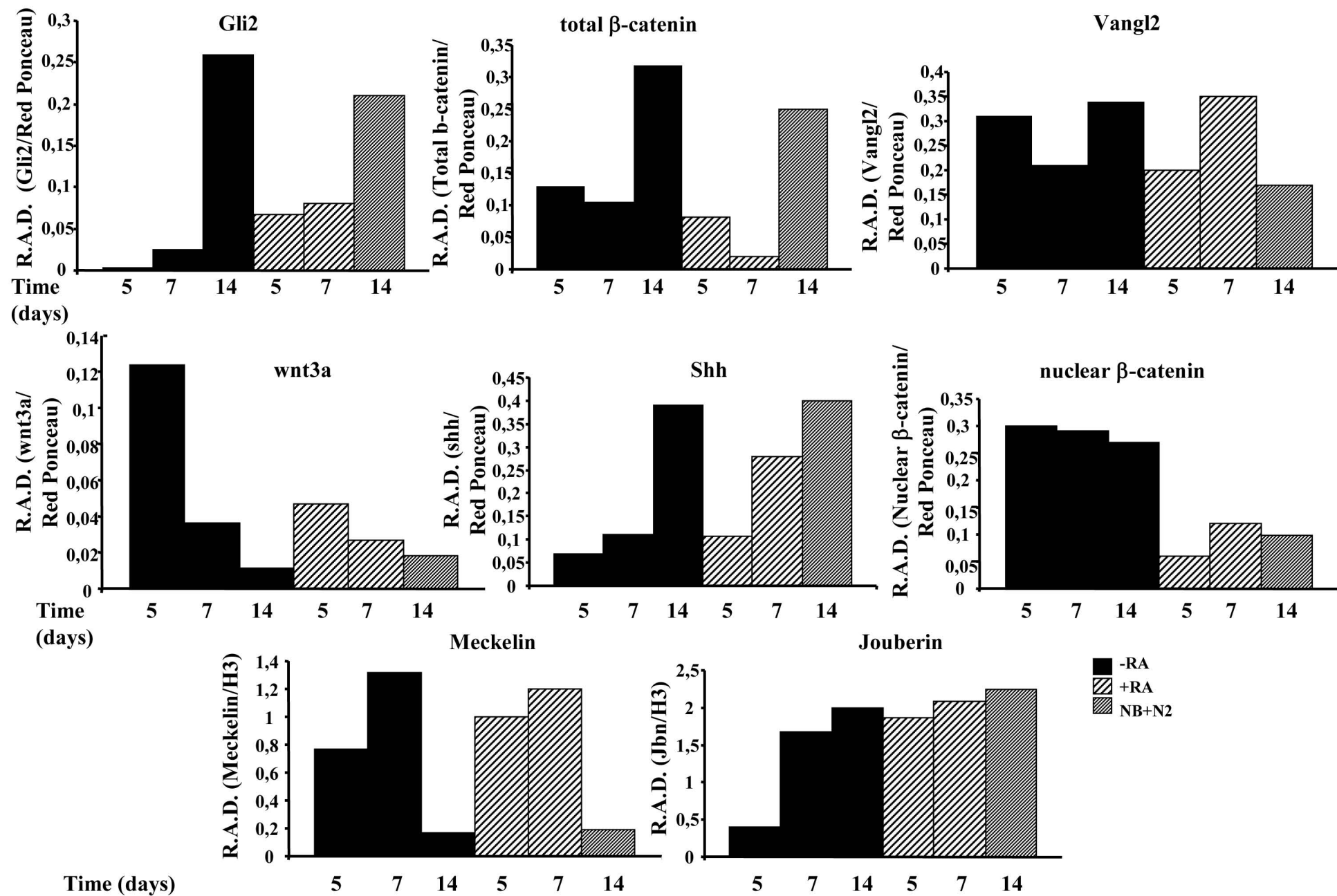


Fig. S6

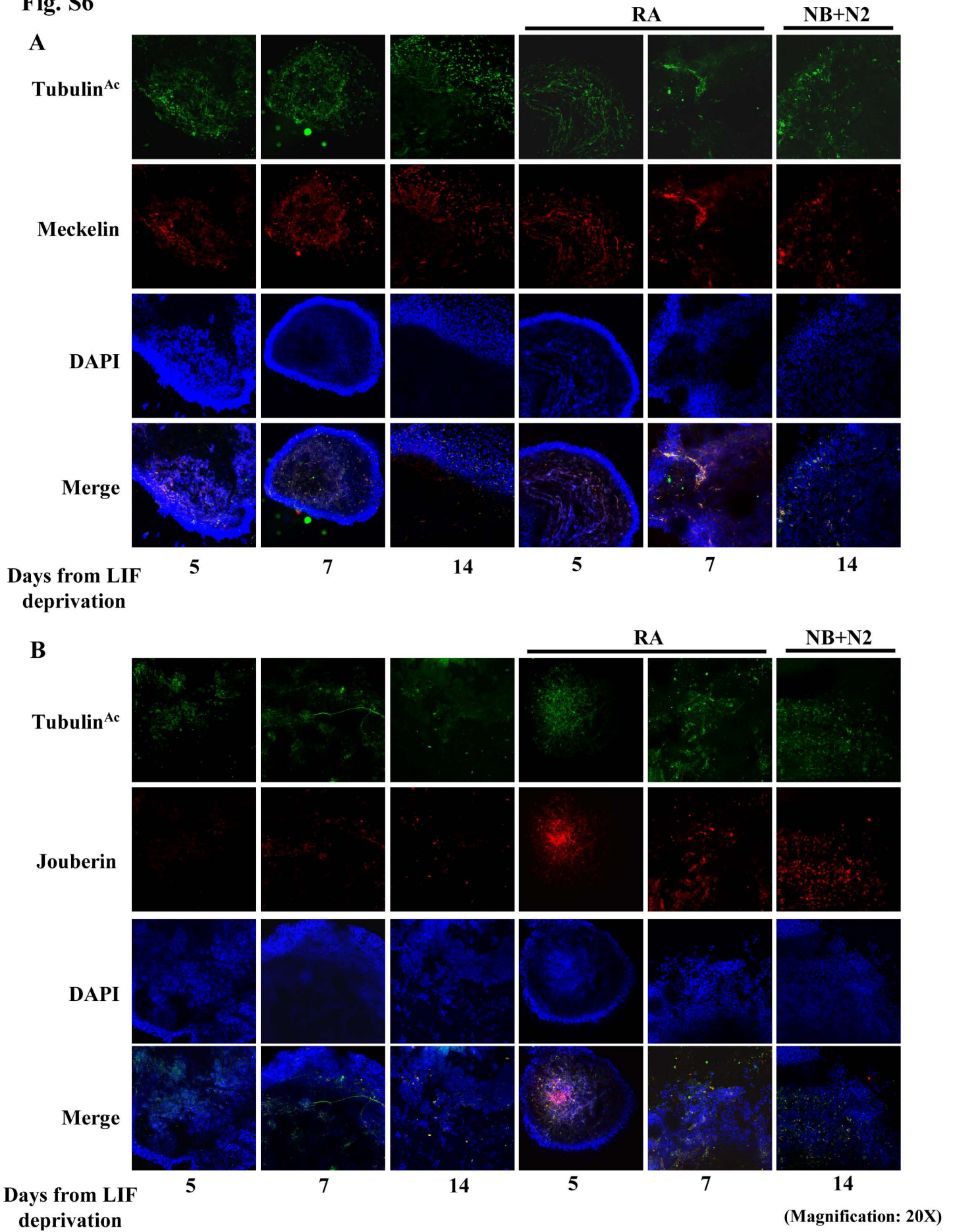


Fig. S7

