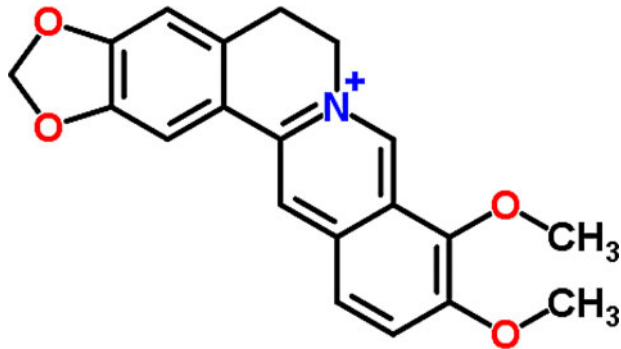


Supplementary Data



SUPPLEMENTARY FIG. S1. Chemical structure of berberine. Molecular Formula: $C_{20}H_{18}NO_4$; Average mass: 336.360687 Da; Monoisotopic mass: 336.123047 Da; Systematic name: 9,10-Dimethoxy-5,6-dihydro[1,3]dioxolo[4,5-g]isoquinolino[3,2-a]isoquinolin-7-ium.