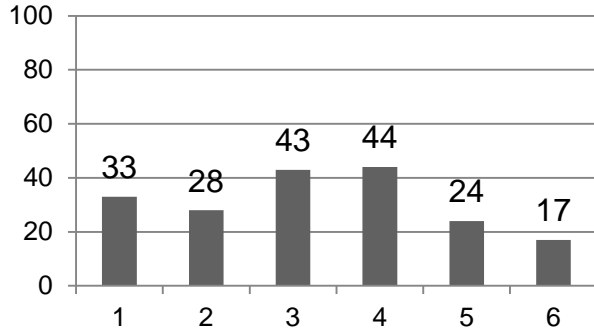


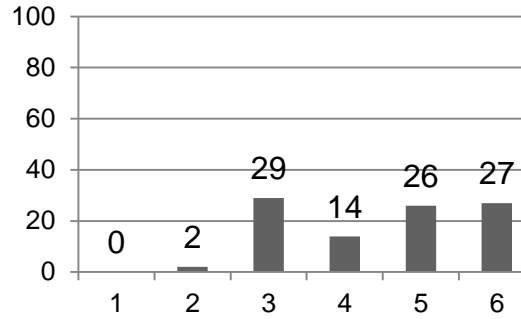
% of tumors with hypermethylation

miR-572



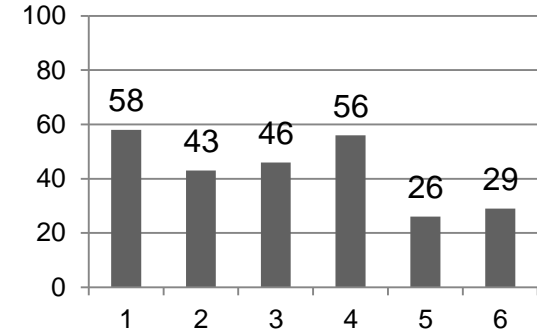
% of tumors with hypermethylation

miR-375-I



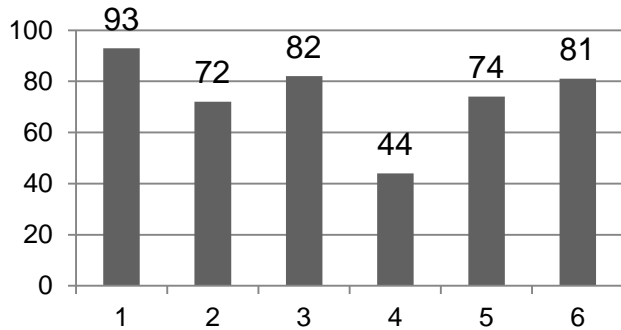
% of tumors with hypermethylation

miR-34a



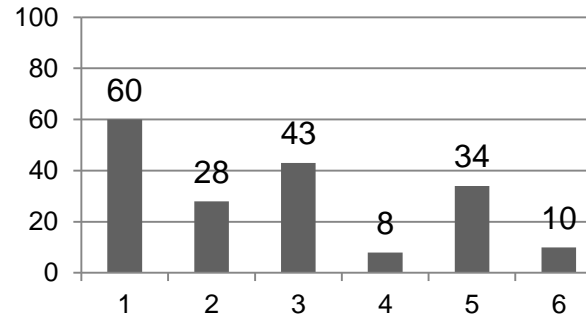
% of tumors with hypermethylation

miR-129-2



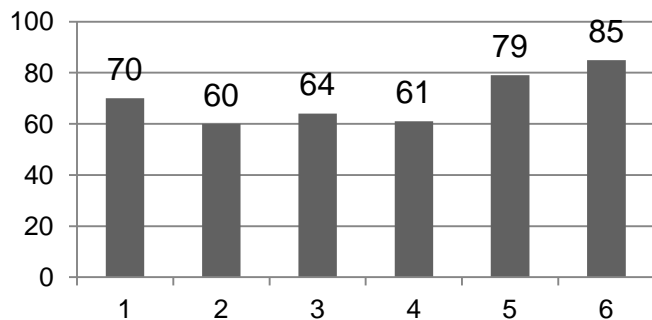
% of tumors with hypermethylation

miR-345



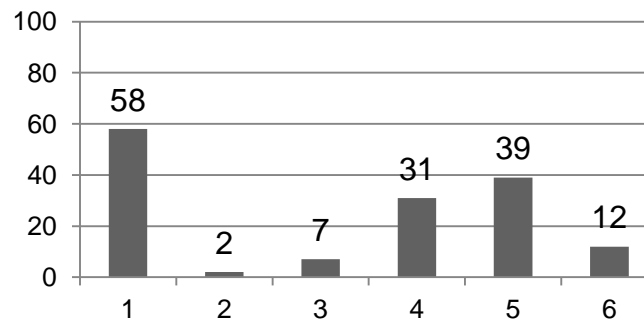
% of tumors with hypermethylation

miR-663



% of tumors with hypermethylation

miR-132



1. Sporadic Finnish MSI-CRC
2. Sporadic Finnish MSS-CRC
3. Finnish Lynch-CRC
4. Finnish Lynch-EC
5. Sporadic Australian MSI-CRC
6. Sporadic Australian MSS-CRC

Supplementary Figure 3.

Percentages of tumors with hypermethylation relative to the respective normal tissues at the seven individual miRNA loci. The exact percentage is given above each bar. Please see Supplementary Table 5 for cut-off values for hypermethylation and Table 2 for statistical analysis of group-specific comparisons.