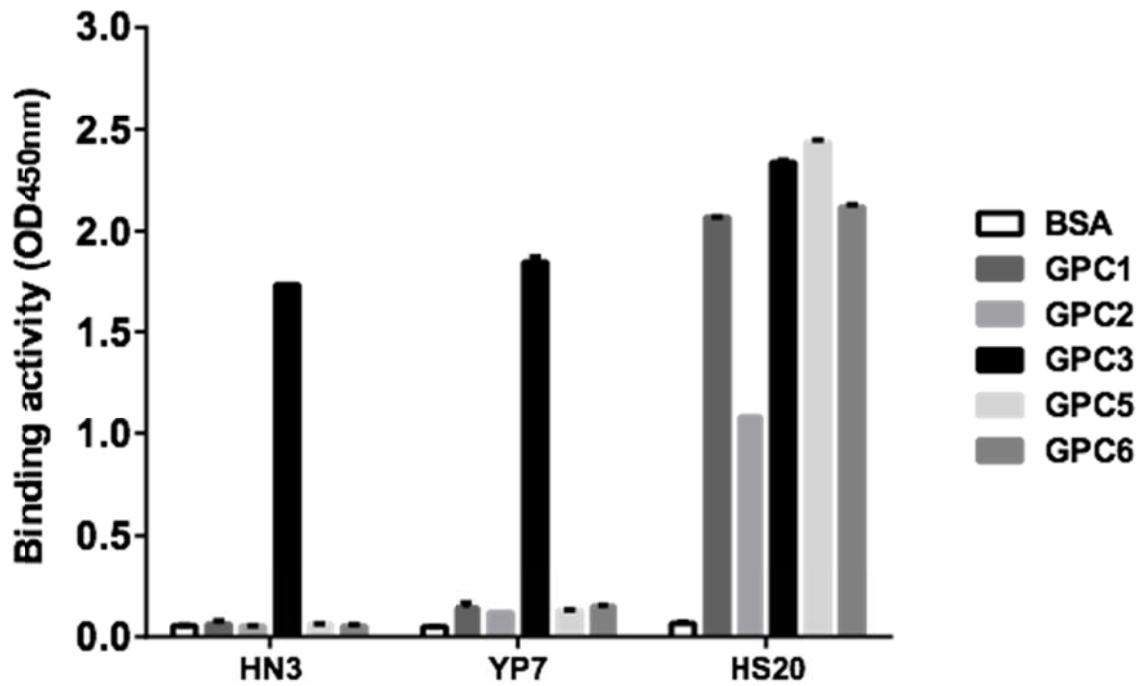
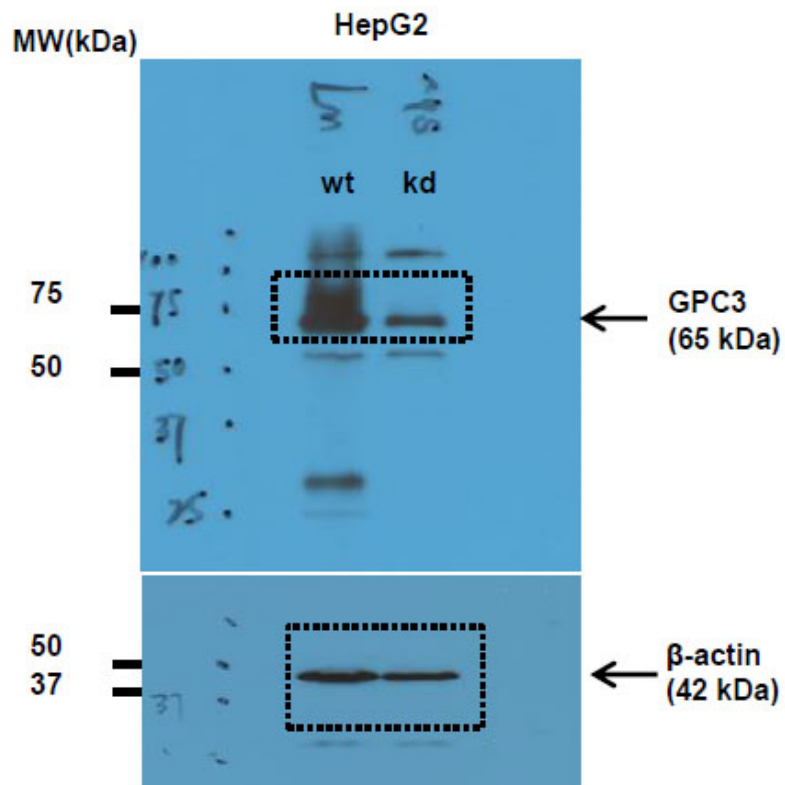
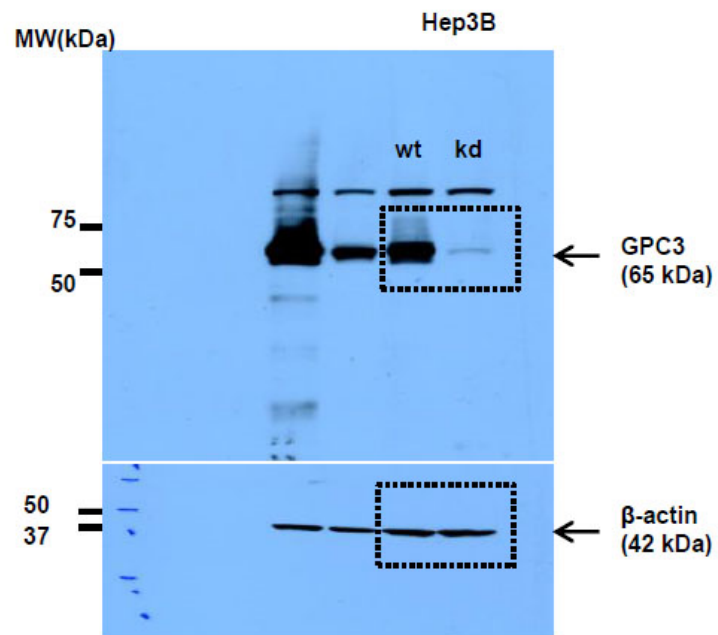


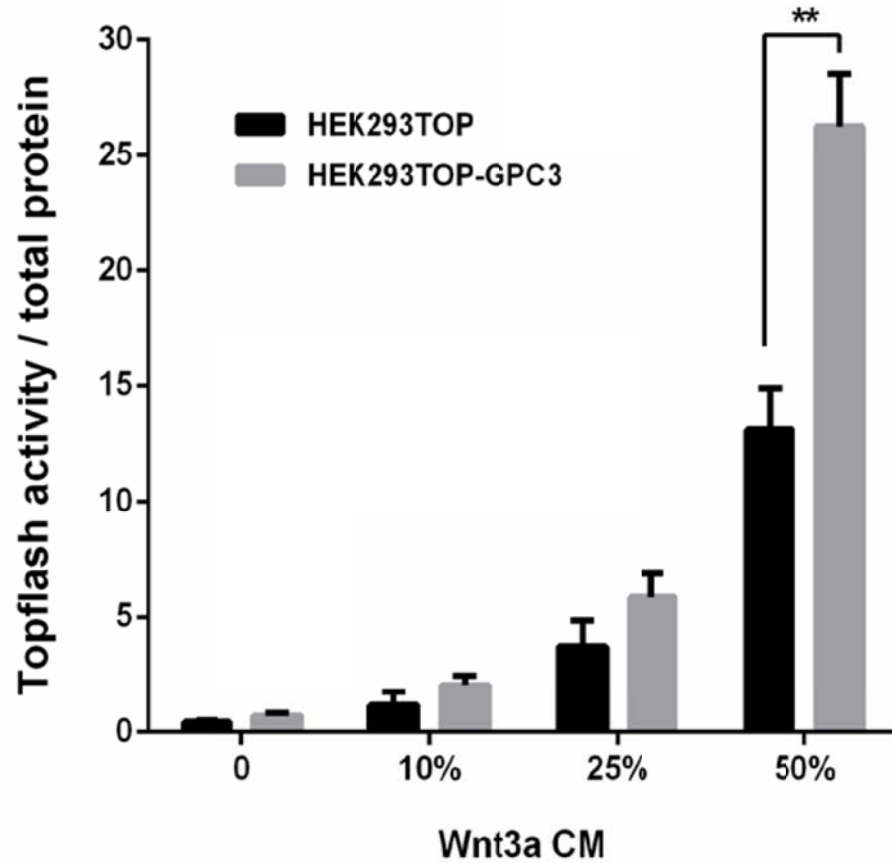
Supplementary Figure 1. Original western blot images for Figure 1b.



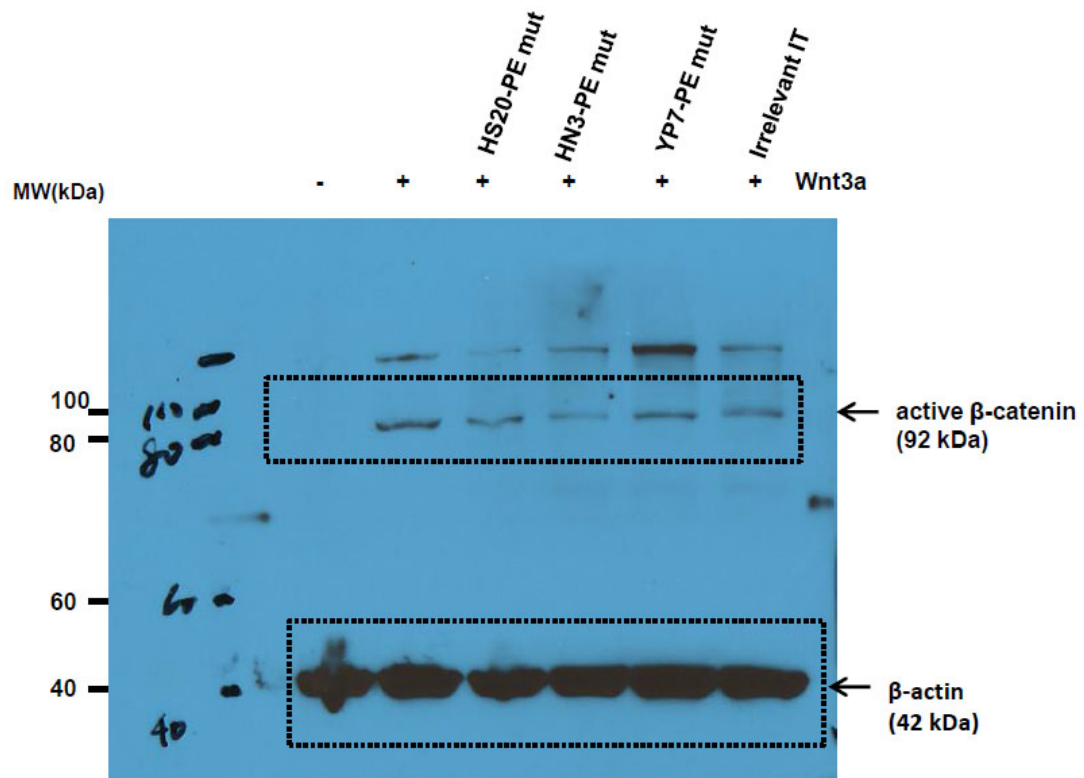
Supplementary Figure 2. Binding specificity of HN3, YP7 and HS20 for human glypicans. ELISA analysis of the HN3, YP7 and HS20 antibodies (1 μ g/ml) on recombinant GPC1, GPC2, GPC3, GPC5 and GPC6 proteins (R&D, Minneapolis, MN).



Supplementary Figure 3. Original western blot images for Figure 2c.

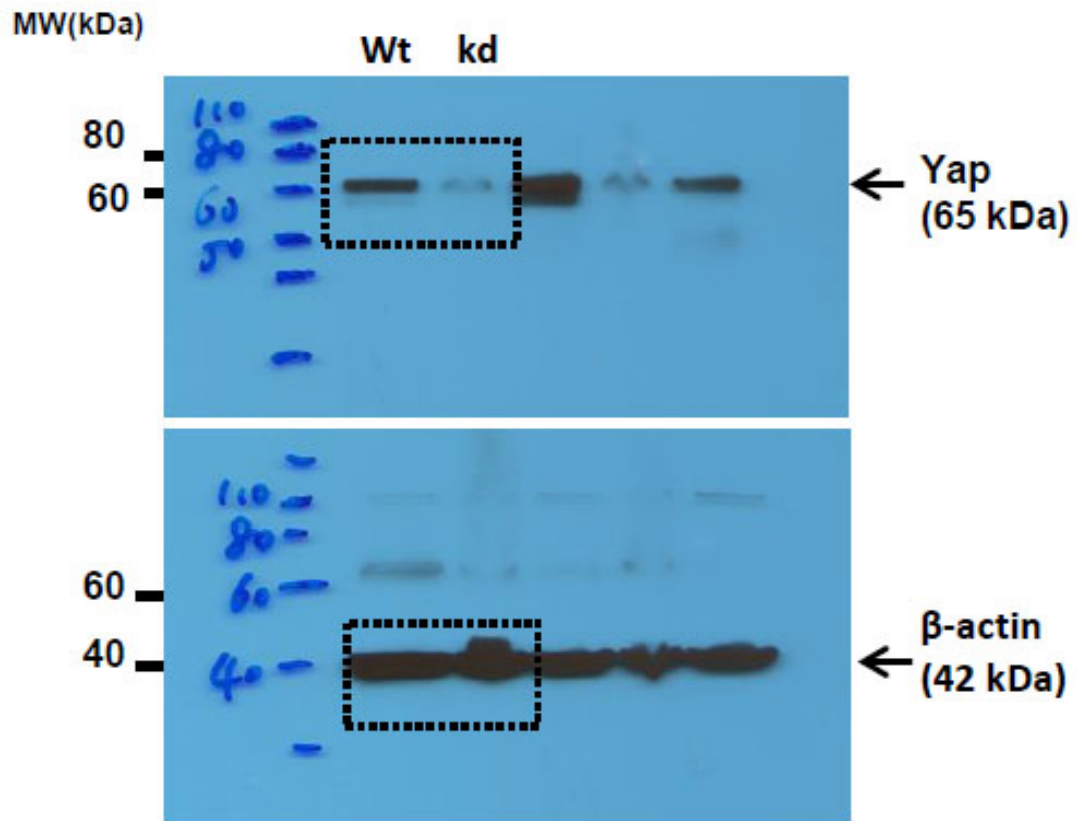


Supplementary Figure 4. Overexpression of GPC3 sensitized Wnt3a-induction. HEK293Topflash cells or GPC3-transfected HEK293Topflash cells were treated with Wnt3a CM for 24 hours and then tested for Topflash activity. Values represent mean \pm s.d. Student's *t*-test, $P^{**}<0.01$.

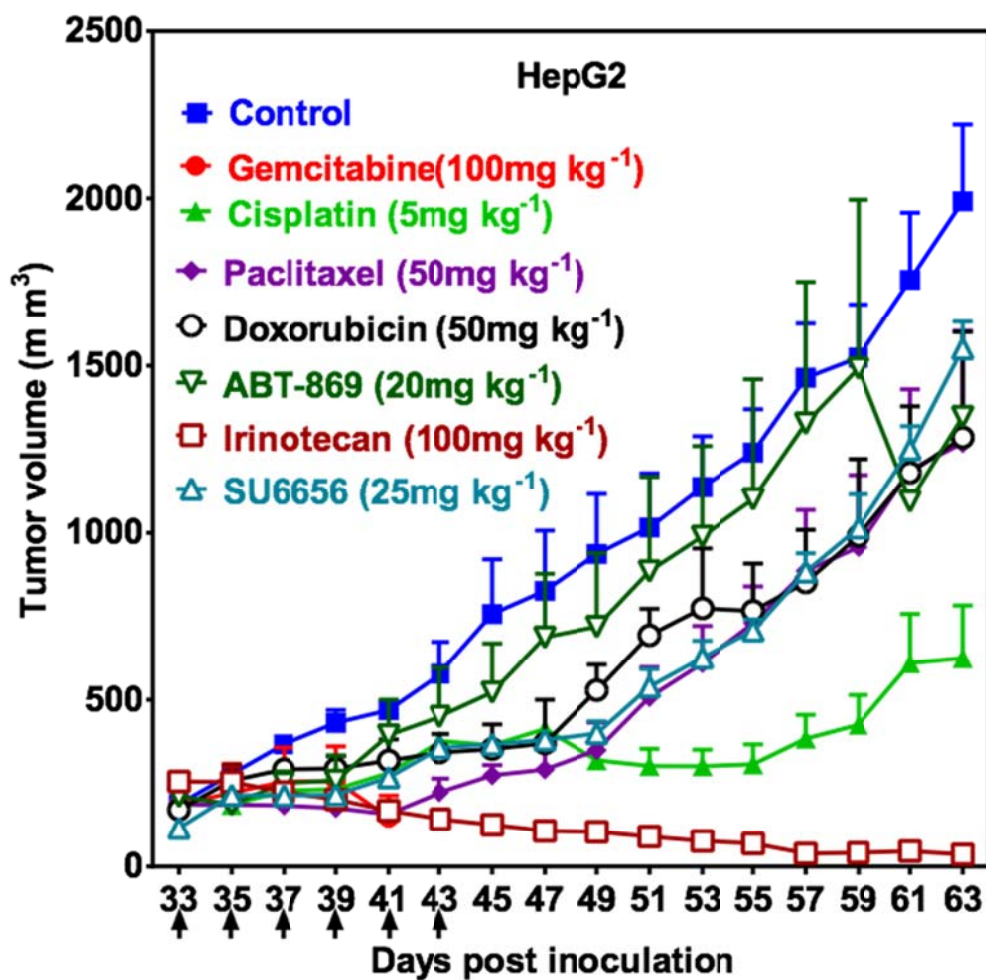


Supplementary Figure 5. Original western blot images for Figure 4b.

IT: immunotoxin.



Supplementary Figure 6. Original western blot images for Figure 4d.



Supplementary Figure 7. *In vivo* chemotherapeutic drug screen on HepG2 xenograft.

Mice with HepG2 xenografts (average volume: 100mm³) were intraperitoneally treated with indicated chemotherapeutic drugs every other day. Arrow: drug injection. n=4/group.

Values represent mean ± s.e.m.