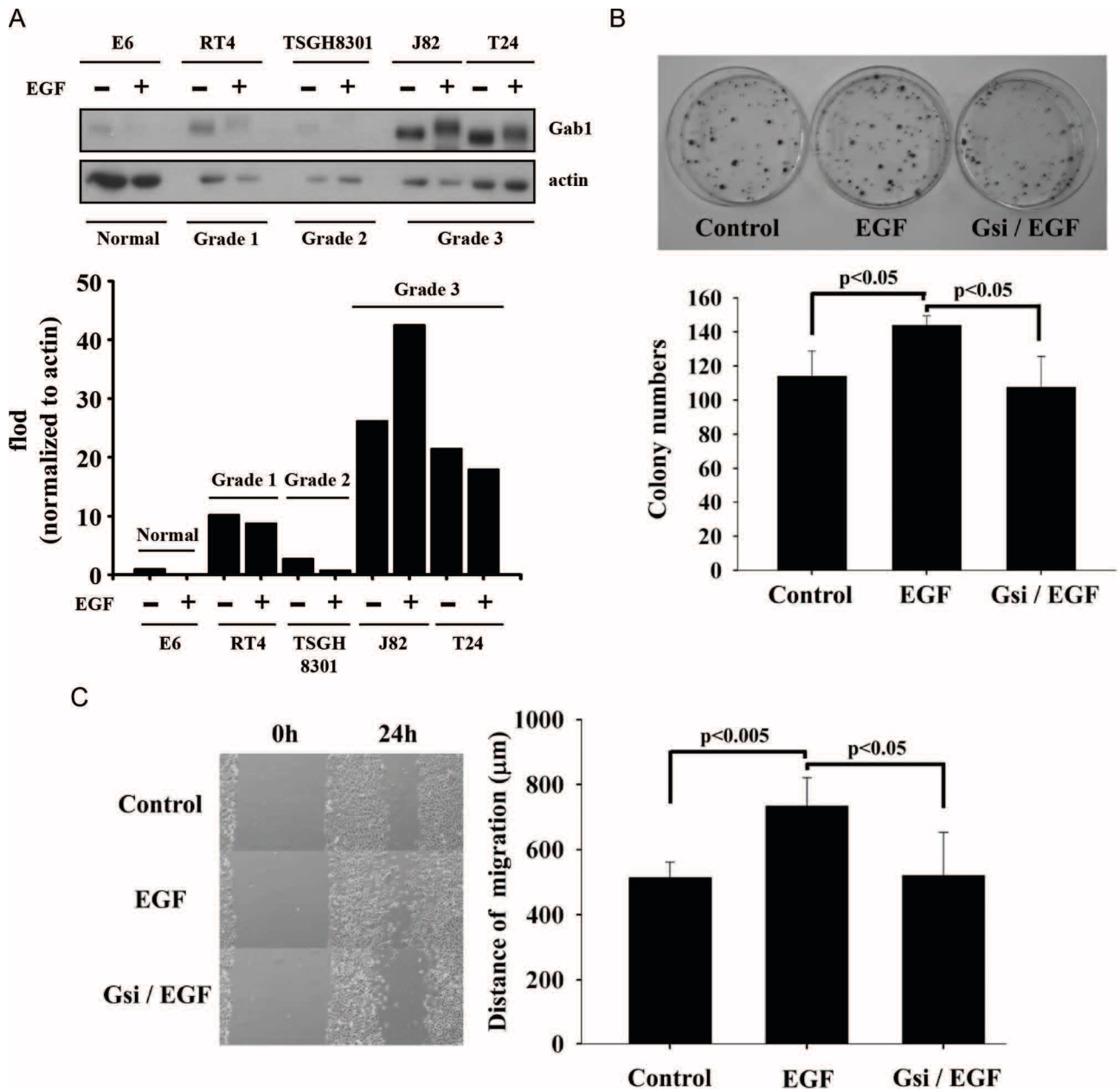
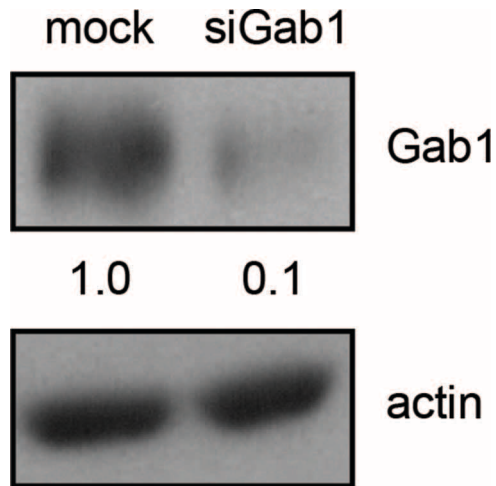


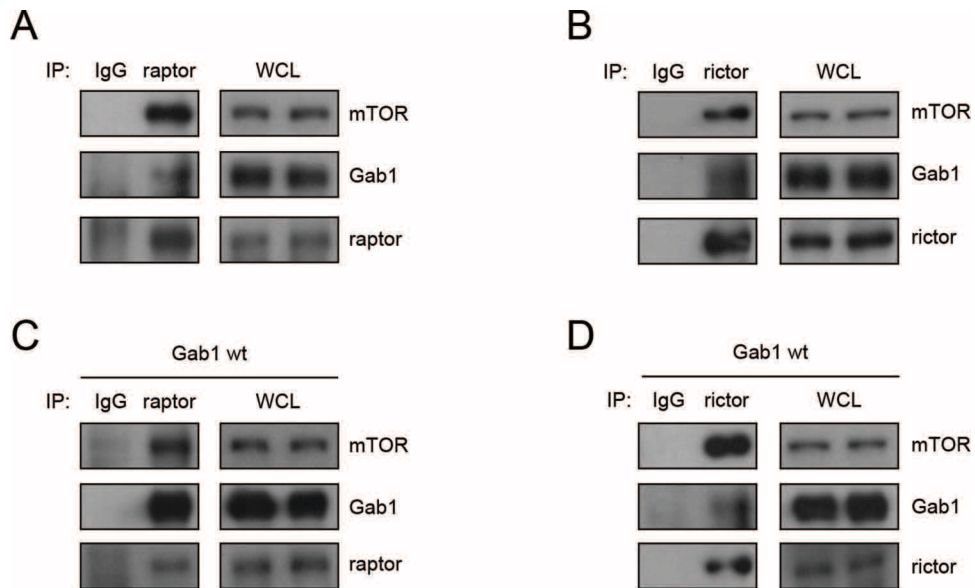
SUPPLEMENTARY FIGURES



**Supplementary Figure S1: The supplementary data for Figure 1. (A)** The expression level of Gab1 was found to be weaker in normal urothelial cell lines (E6, normal) and low-grade urothelial carcinoma cell lines (RT4, Grade I; TSGH8301, Grade II) and higher in high-grade urothelial carcinoma cell line (J82, T24, Grade III). **(B)** Knockdown of Gab1 reduced colony formation numbers of T24 cells upon EGF stimulation. Gsi: Gab1 siRNA. **(C)** Knockdown of Gab1 inhibited cell migration ability of T24 cells upon EGF stimulation. Gsi: Gab1 siRNA.



Supplementary Figure S2: Knockdown efficiency of Gab1 for Figure 2.



Supplementary Figure S3: The negative control of co-immunoprecipitation for Figure 5.