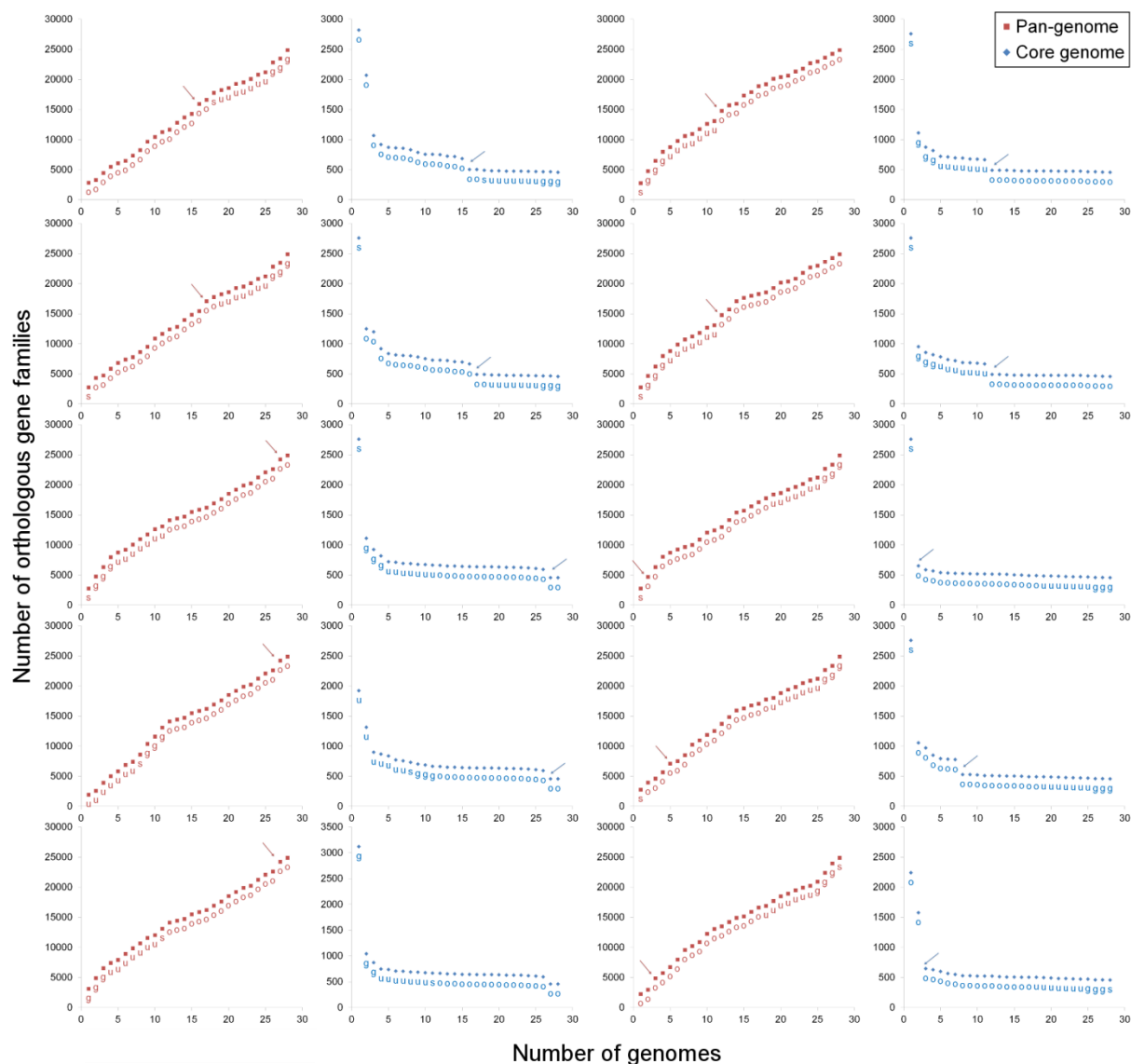


Additional File 3: Figure S2a - Pan and core genome plot of 28 *P. revotella* genomes. The plot shows progression of core and pan-genome after sequential addition of *Prevotella* genomes into the analysis as per their body niche. The color bars represent the number of new gene families added into the *Prevotella* pan-genome. The species names are colored according to their niches.



Additional File 3: Figure S2b - Trends of core and pan-genome curves with variation in order of genomes. Variation in shape of pan and core genome curve due to consideration of *Prevotella* genomes in different orders based on body niche, the arrow indicates the variation in pan and core genome size after addition of *P. tannerae* genome into the analysis. Letters indicate niches (g: GIT, o: ORAL Cavity, s: SKIN and u: UGT).