

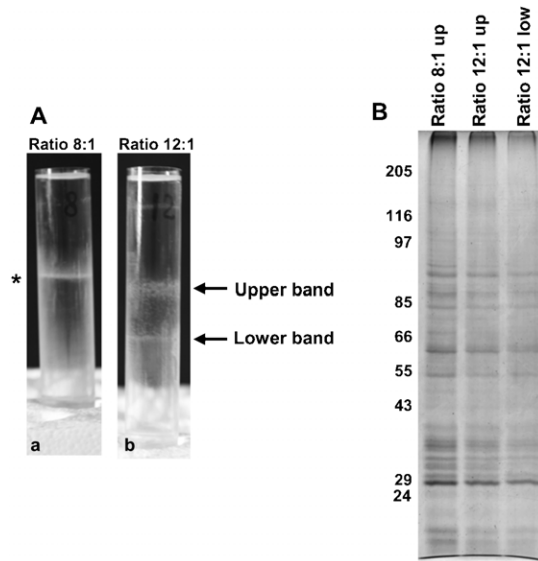
Supplementary Material**Alessandra Moscatelli et al. doi: 10.1242/bio.201410249**

Fig. S1. DIM purification. (A) Optiprep gradients showing the single floating band in ratio 8:1 (*) and the two floating bands in ratio 12:1. (B) Electrophoretic profile of DIMs obtained using detergent/protein ratios of 8:1 and 12:1, respectively; upper and lower band in ratio 12:1 showed similar electrophoretic pattern.

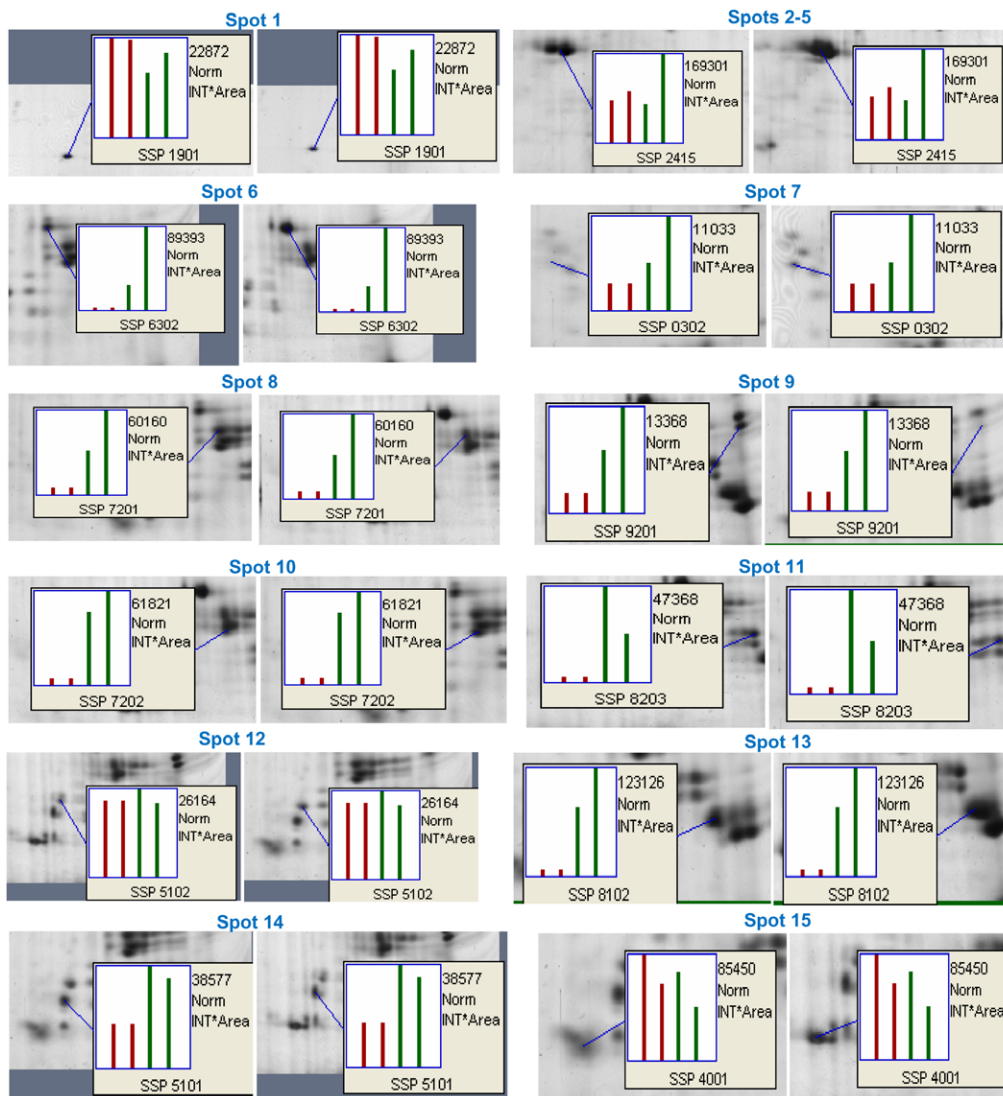


Fig. S2. PDQuest analysis of 2D gels, showing the amount of identified DIM polypeptides, with respect to the corresponding P2 polypeptides.

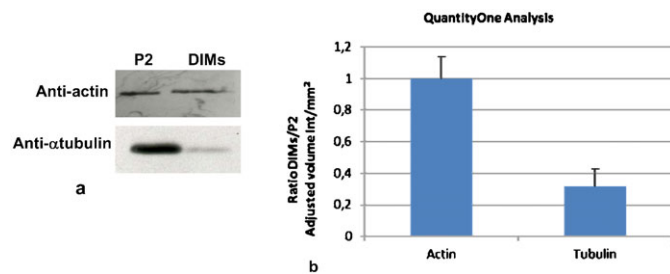


Fig. S3. QuantityOne analysis. (a) Anti-actin and anti- α tubulin western blotting in DIMs and P2. (b) Graph showing the amount of actin and tubulin recovered in DIMs with respect to P2, respectively (n=3). Error bars indicate standard errors.

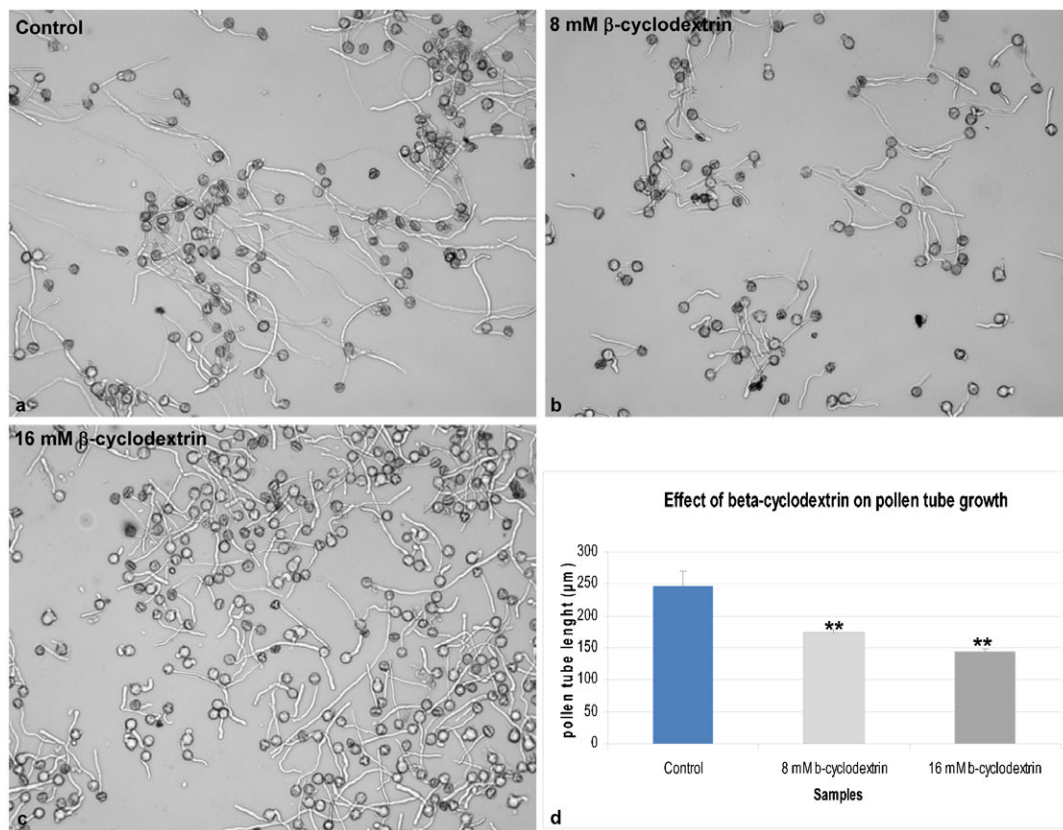


Fig. S6. Inhibition of the pollen tube growth rate by BCD. (a–d) The pollen tube growth was affected by 8 mM and 16 mM BCD, with respect to the control. Error bars represent standard errors. ** indicate $P < 0.001$.