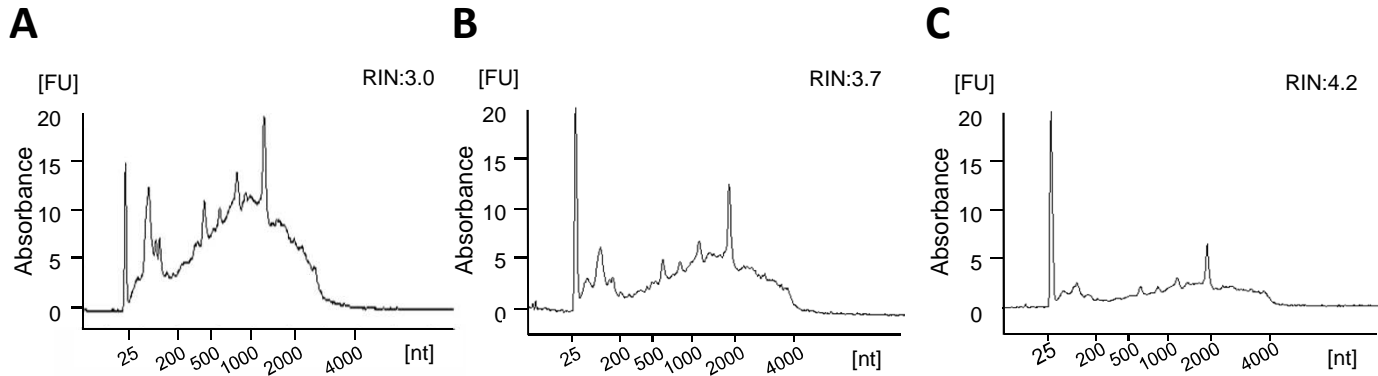


Supplementary Figure S1.



RNA integrity is maintained after cresyl violet staining. Electropherogram profiles of RNA from total non-mounted tissue (A), cresyl violet-stained mounted tissue with (B) and without aqueous rinsing steps (C). RNA length is indicated on the x-axis and y-axis corresponds to the fluorescence units. RIN values are calculated according to a standardized algorithm using various features correlated to RNA integrity.