

Supplementary Figure S1

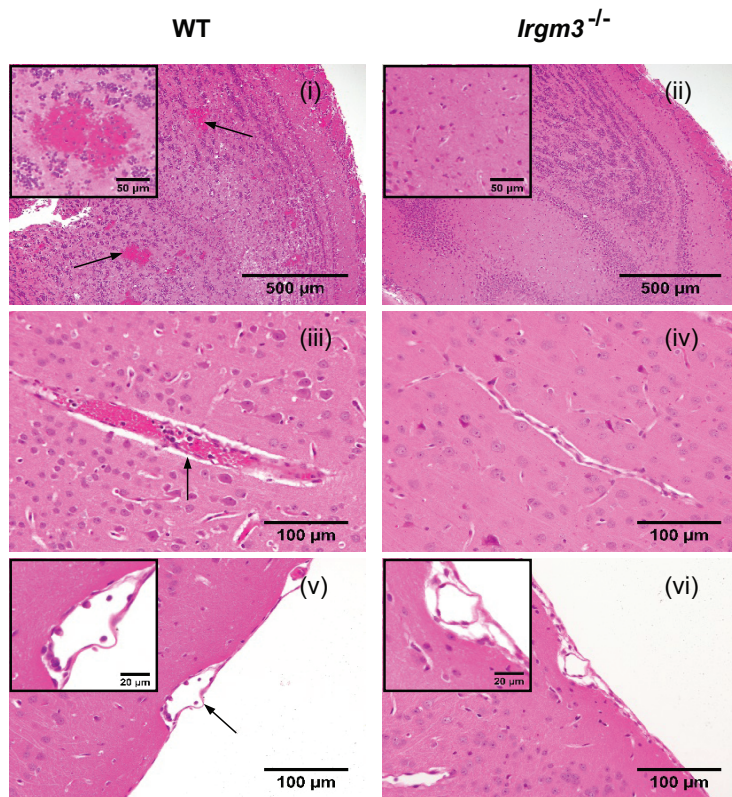


Figure S1. Brain histology in PbA-infected *Irgm3*^{-/-} and WT mice. Representative histological H&E stained sections from brains of WT (i,iii,v) and *Irgm3*^{-/-} (ii,iv,vi) mice on day 7 p.i. are shown. Pial and parenchymal vessels containing parasitized erythrocytes and leukocytes, as well as areas of hemorrhage, are indicated by black arrows.