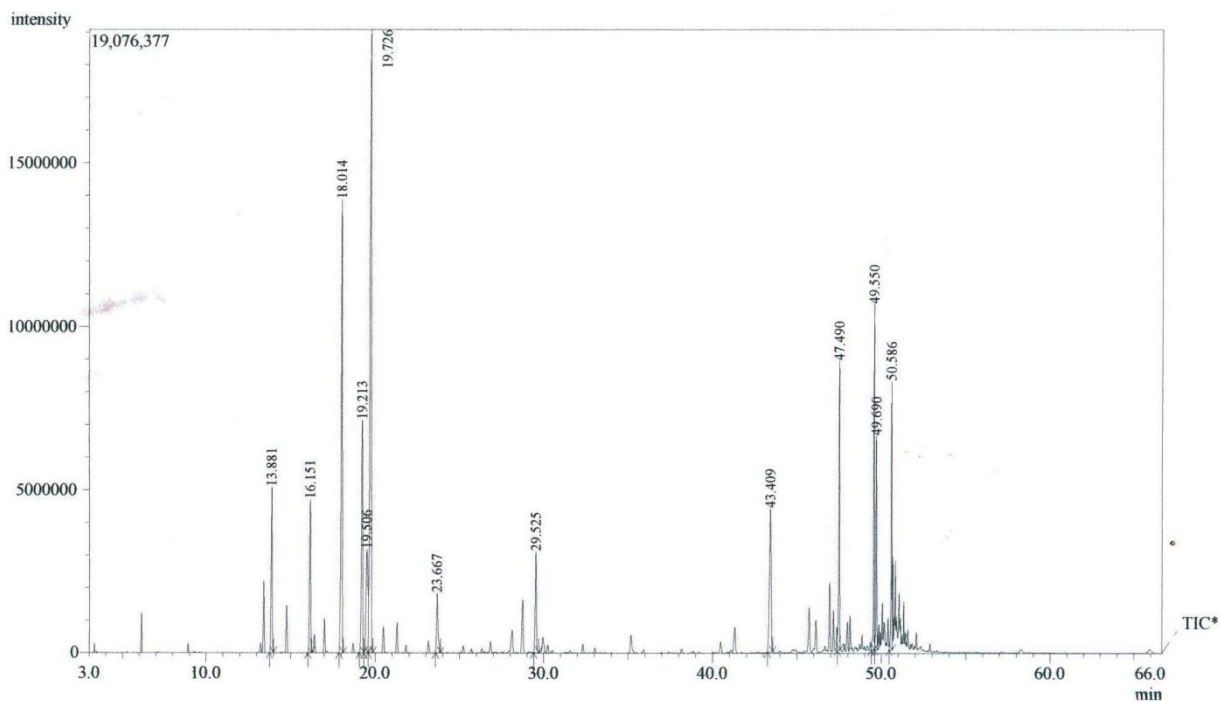


Supplementary Information

Figure S1. Gas Chromatography-Mass Spectroscopy analysis of *Croton cordifolius* essential oil. **a.** GC-MS chromatogram, **b.** GC-MS peak report.

a.



b.

Peak#	R.Time	Area	Height	A/H	Mark	Name	Base m/z	Area%
1	13.881	22835927	5074978	4.50			93.10	4.96
2	16.151	21553164	4696630	4.59			93.10	4.68
3	18.014	71010347	13864954	5.12			93.10	15.43
4	19.213	36886692	7129365	5.17			119.10	8.02
5	19.506	24007099	3166689	7.58	V		68.05	5.22
6	19.726	115469228	19063348	6.06	V		43.05	25.09
7	23.667	10748453	1819513	5.91			71.05	2.34
8	29.525	15690775	3094592	5.07			59.05	3.41
9	43.409	30270014	4386903	6.90			93.10	6.58
10	47.490	33865220	8842316	3.83	V		121.15	7.36
11	49.550	30760973	10571234	2.91	V		43.05	6.68
12	49.690	21700540	6553023	3.31	V		43.05	4.72
13	50.586	25358173	8231568	3.08	V		161.15	5.51
		460156605	96495113					100.00

Figure S2. ^{13}C NMR spectrum of the essential oil of *Croton cordifolius* (CDCl₃, 75MHz).

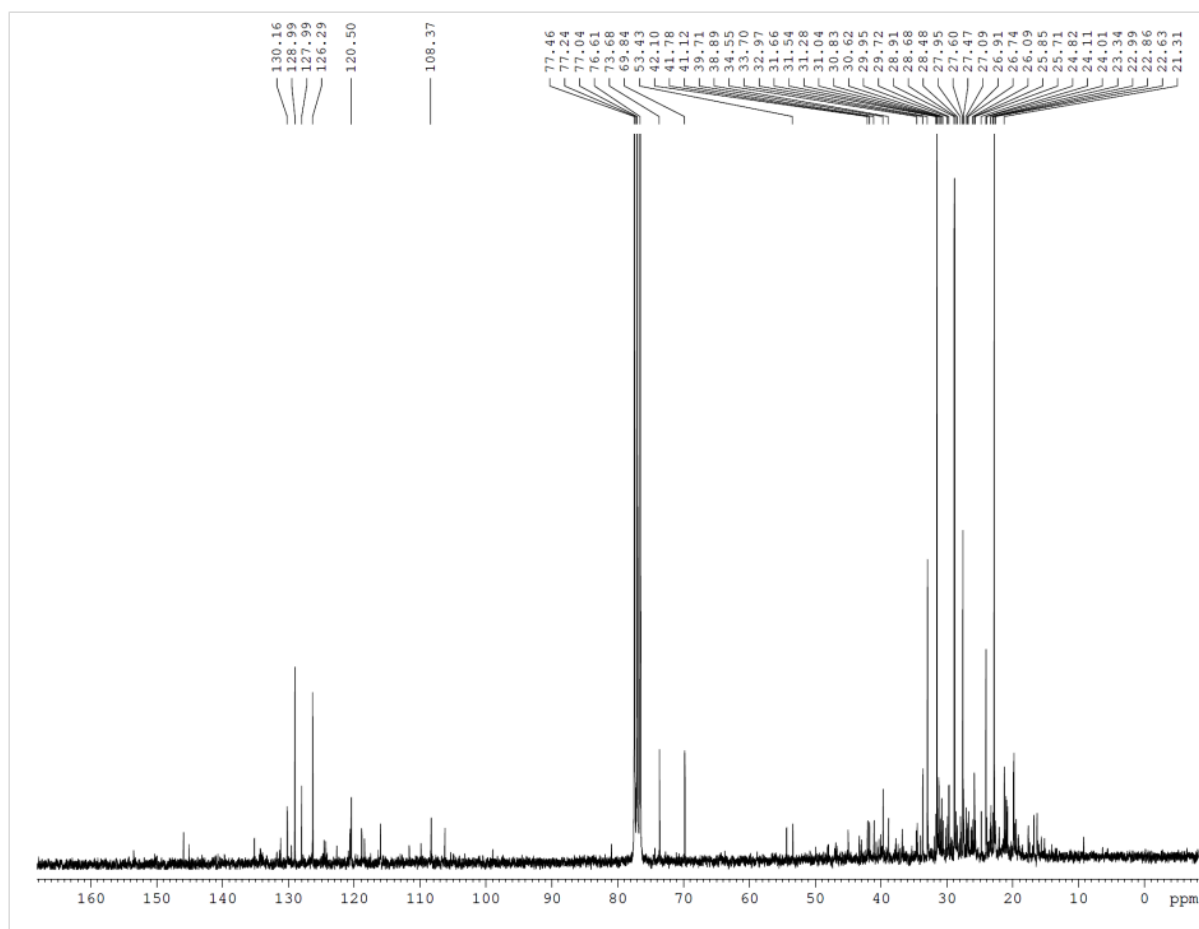


Figure S3. ^1H NMR spectrum of the essential oil of *Croton cordiifolius* (CDCl_3 , 300 MHz).

