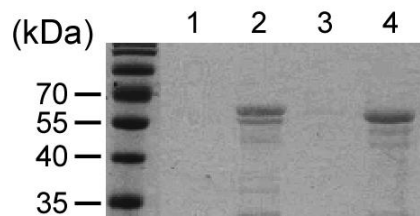
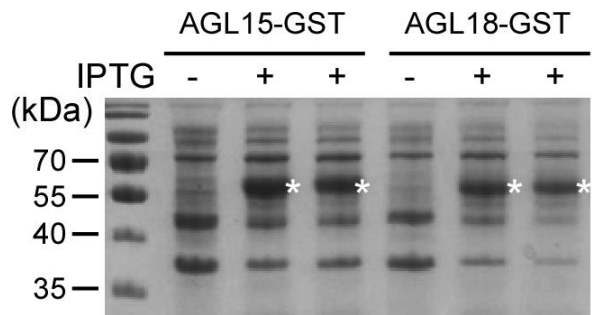


Supple Fig 1.



Supple Fig. 2

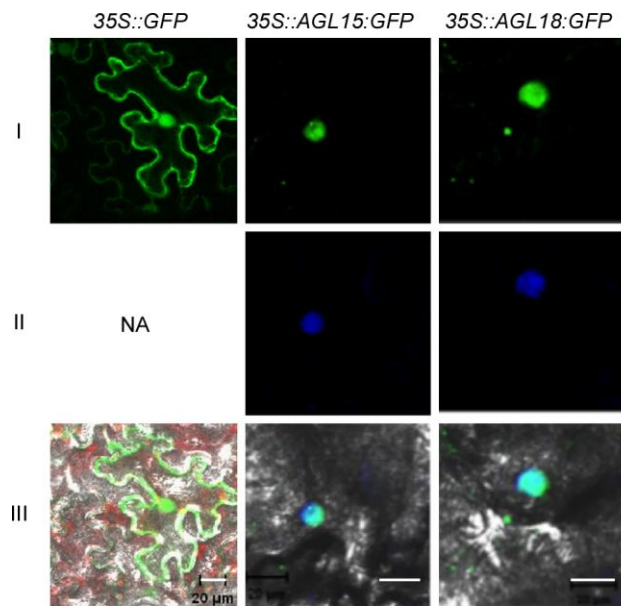


Table S1 Oligonucleotide sequences used for cloning, RT-PCR, qPCR, and EMSA in this study.

Gene	Primer	Purpose	Sequence (5' to 3')	Direction
AGL15	JH9253	Cloning	catgaattcATGGGTCGTGGA AAA	Sense
	JH9254	Cloning	gggggatccCTA AACAGAGAACCT	Anti-sense
	JH7294	qPCR	TTGAAGAATCACGCTCAAGGAAC	Sense
	JH7295	qPCR	AACCTGTCTACGCAAGGTCTCG	Anti-sense
	JH7296	RT-PCR	AGGACTAAACAGAGAACCTTTGTC	Anti-sense
AGL18	JH9255	Cloning	gtgaattcATGGGGAGAGGAAGGATT	Sense
	JH9256	Cloning	cgggatccTCA ATC AGA AGC CAC TTG	Anti-sense
	JH7250	qPCR	TGACGCCGAGGTTGCTCTTATC	Sense
	JH7251	qPCR	TTGCTCCATACAGACGCTGGAG	Anti-sense
	JH7252	RT-PCR	CTGAACCTCTCCCAACATCTC	Anti-sense
AT1G13320 (PP2A)	JH6505	RT-PCR, qPCR	GCGGTTGTGGAGAACATGATACG	Sense
	JH6506	RT-PCR, qPCR	GAACCAAACACAATTCGTTGCTG	Anti-sense
AT2G28390	JH7588	qPCR	TTGATCCACTTGCAGACAAGGC	Sense
	JH7589	qPCR	TACCCTTTGGCACACCTGATTG	Anti-sense
FT	JH6488	qPCR	AGGCCTTCTCAGGTTCAAACAAGC	Sense
	JH6489	qPCR	TGCCAAAGGTTGTCCAGTTGTAGC	Anti-sense
FUL	JH6325	qPCR	ACGGGTCAGCAAGAAGGACA	Sense
	JH4687	qPCR	GAGAGTTTGGTTCCGTCACGACGATG	Anti-sense
miR156a CarG I	JH9341	EMSA	TGGTGAAAAACAATTAATAGAAAATTAATT	Sense
	JH9342	EMSA	AATTAATTTTCTATTAATTGTTTTTCACCA	Anti-sense
miR156a CarG II	JH9343	EMSA	ATATATCTTCATAATTTTGCAAGTCTTTA	Sense
	JH9344	EMSA	TAAAGACTTGCAAAATTATGGAAGATATAT	Anti-sense
miR156a CarG III	JH9345	EMSA	ATAATAATAATCTAATTAAAGGAGATGAGA	Sense
	JH9346	EMSA	TCTCATCTCCTTTAATTAGATTATTATTAT	Anti-sense
miR156a CarG IV	JH9347	EMSA	CAAGTTCATTGCCATTTTTAGGTCTCTCTA	Sense
	JH9348	EMSA	TAGAGAGACCTAAAAATGGCAATGAAGTTG	Anti-sense
miR156a CarG V	JH9349	EMSA	CTTTTTTTTGCTTTTTATGGTTATGTTTTT	Sense
	JH9350	EMSA	AAAAACATAACCATAAAAAGCAAAAAAAG	Anti-sense
miR156a NC	JH9351	EMSA	TAAGAGAGATAAAGAAAAGCGACAAGAGCCA	Sense
	JH9352	EMSA	TGGCTCTTGTGCGCTTTCTTTATCTCTCTTA	Anti-sense
miR156c CarG I	JH9353	EMSA	AAAAAAATTGCTATTTTTTGAAAATGTTAC	Sense
	JH9354	EMSA	GTAACATTTTCAAAAAATAGCAATTTTTTT	Anti-sense
miR156c CarG II	JH9355	EMSA	TGAATTAATTCTTAAAATTGTGAAATAATT	Sense
	JH9356	EMSA	AATTATTTCACAATTTTAAGAATTAATTCA	Anti-sense
miR156c CarG III	JH9357	EMSA	TTGTCGTTGCCGTTTATAGGTTATGAGATT	Sense
	JH9358	EMSA	AATCTCATAACCTATAAACGGCAACGACAA	Anti-sense

miR156c NC	JH9359	EMSA	TTCAGACATCTGTCCCATTGCATGTAAGAG	Sense
	JH9360	EMSA	CTCTTACATGCAATGGGACAGATGTCTGAA	Anti-sense
pMIR156b	TP0001	Cloning	CCTAATCCAGTGTTATCATGATAC	Sense
	TP0002	Cloning	GATTGAGGAATGCAACAGAGAAGGC	Anti-sense
pri-miR156a	JH6177	qPCR	GGACAAGAGAAACGCAAAGAAACTGAC	Sense
	JH6178	qPCR	AGTGAGCACGCAAGAGAAGCAAG	Anti-sense
pri-miR156c	JH6181	qPCR	CTGACAGAAGAGAGTGAGCACACAAAG	Sense
	JH6182	qPCR	CAGATAGAGCAGTGAGCACGCAAG	Anti-sense
pri-miR156d	JH6183	qPCR	CAGAAGAGAGTGAGCACACAAAGGG	Sense
	JH6184	qPCR	GTGAGCACGCAAAAGCAACCATATAC	Anti-sense
SEP3	JH2947	qPCR	TGCCTTCAAGAGAGGCCTTA	Sense
	JH2948	qPCR	CATTCCAAAGGCTGGAAGAA	Anti-sense
SPL3	JH6036	qPCR	CTTAGCTGGACACAACGAGAGAAGGC	Sense
	JH6037	qPCR	GAGAAACAGACAGAGACACAGAGGA	Anti-sense

Lowercase letters denote synthetic restriction enzyme sites.