

Additional files 4: Figure S3

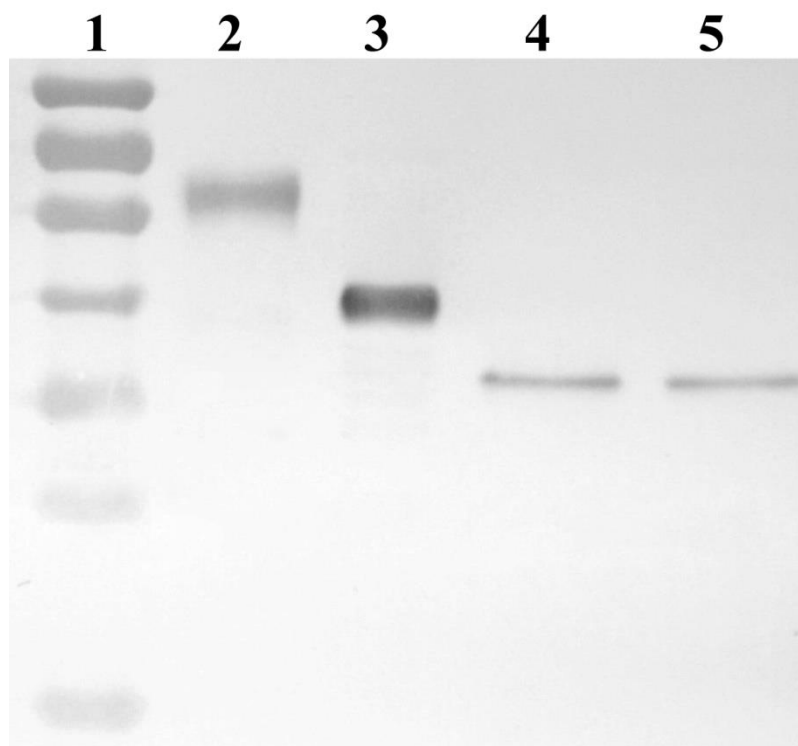


Figure S3. Detection of glycosylation of lipases.

Deglycosylation treatment using Endo Hf showed that pRML (Lipase GH2) was a glycosylated protein, whereas mRML had no glycosylation.

Lane 1: protein markers (top to bottom: 100, 70, 55, 40, 35, 25, 15 kDa). Lane 2: Lipase GH2 without Endo Hf (no deglycosylation). Lane 3: Lipase GH2 with Endo Hf (with deglycosylation). Lane 4: mRML with Endo Hf (with deglycosylation). Lane 5: mRML without Endo Hf (no deglycosylation).