

Supplementary Figure S1

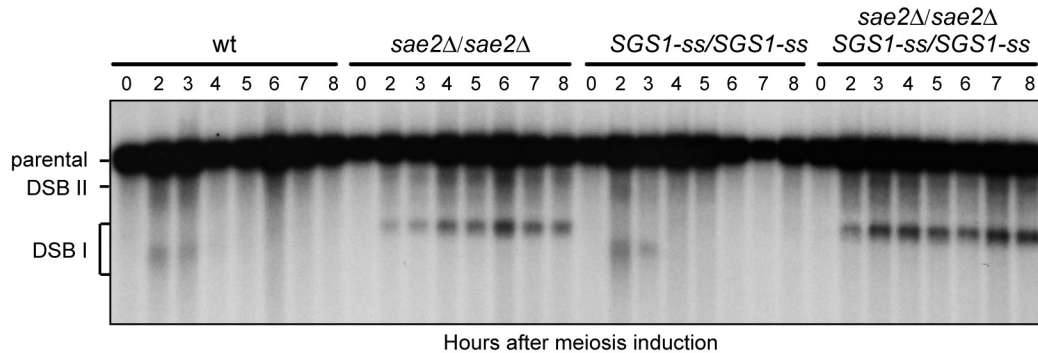


Figure S1. Meiotic DSB formation and processing.

Diploid cells were grown to stationary phase in YPA medium and then resuspended in SPM at time zero. Cell samples were collected at the indicated time points after transfer to SPM to analyze meiotic DSB formation by Southern blot analysis. Southern blot was performed on EcoRI-digested genomic DNA run on native agarose gel and the filter was hybridized with a probe complementary to the 5' non-coding region of the *THR4* gene. This probe reveals an intact EcoRI fragment (parental) of 7.9-kb and two bands of 5.7- and 7.1-kb corresponding to the two prominent meiotic DSB sites (DSB I and DSB II).