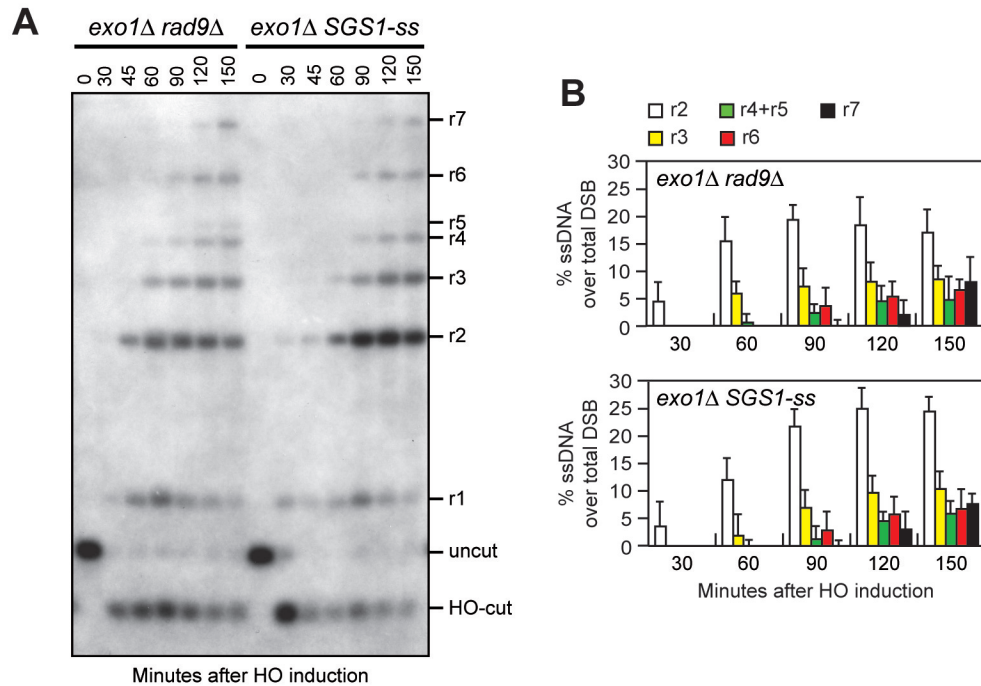


## Supplementary Figure S3



**Figure S3. *exo1Δ rad9Δ* and *exo1Δ SGS1-ss* cells resect the DSB with similar kinetics.**

A DSB resection. YEPR exponentially growing cell cultures of JKM139 derivative strains were transferred to YEPRG at time zero. Genomic DNA was analysed for ssDNA formation at the indicated times after HO induction.

B Densitometric analyses. The experiment as in (A) has been independently repeated three times and the mean values are represented with error bars denoting s.d. (n=3).