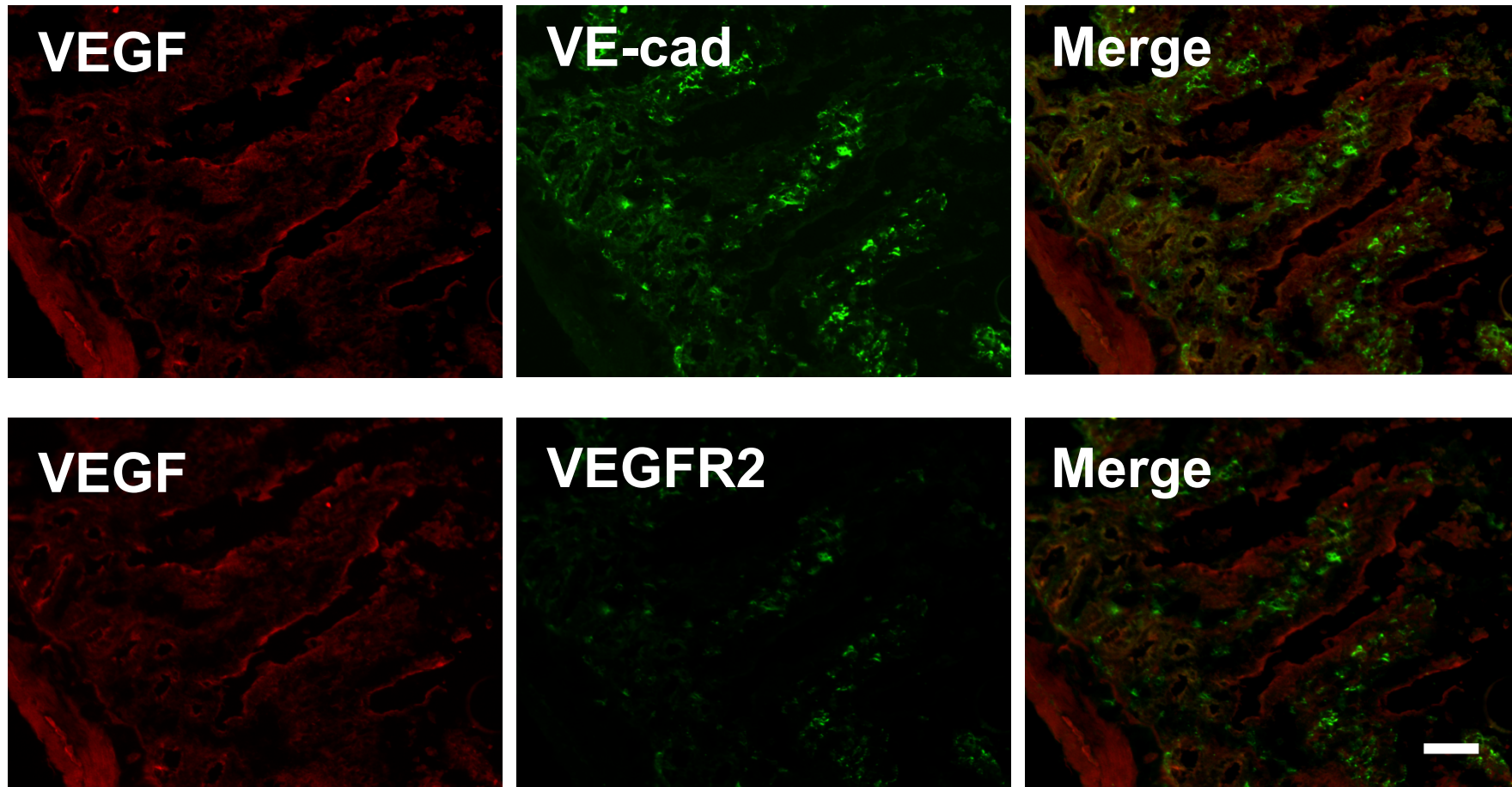


Supplemental Figure 1



Suppl Figure 1 Colocalization of VEGF with VE-cadherin and VEGFR2 in the intestines of cirrhotic rats. The upper panels show the cellular location of VEGF (red, left) and VE-cadherin (green, center), an endothelial cell marker located at cell junctions. The merged image of VEGF and VE-cadherin is shown in the right panel. The lower panels show VEGF (red, left), VEGFR2 (green, center) and the merged image (right). Antibodies used include VEGF (1:200, Santa Cruz Biotechnology), VE-cadherin (C-19, 1:100, Santa Cruz), VEGFR2 (A-3, 1:100, Santa Cruz).