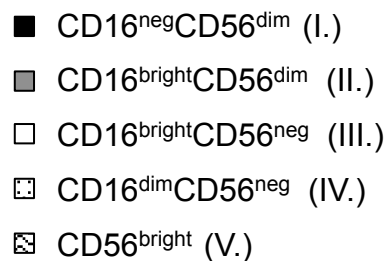
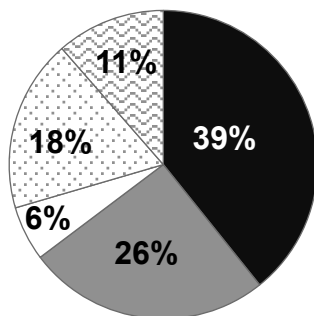
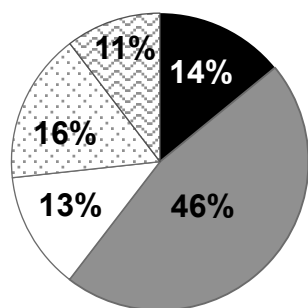
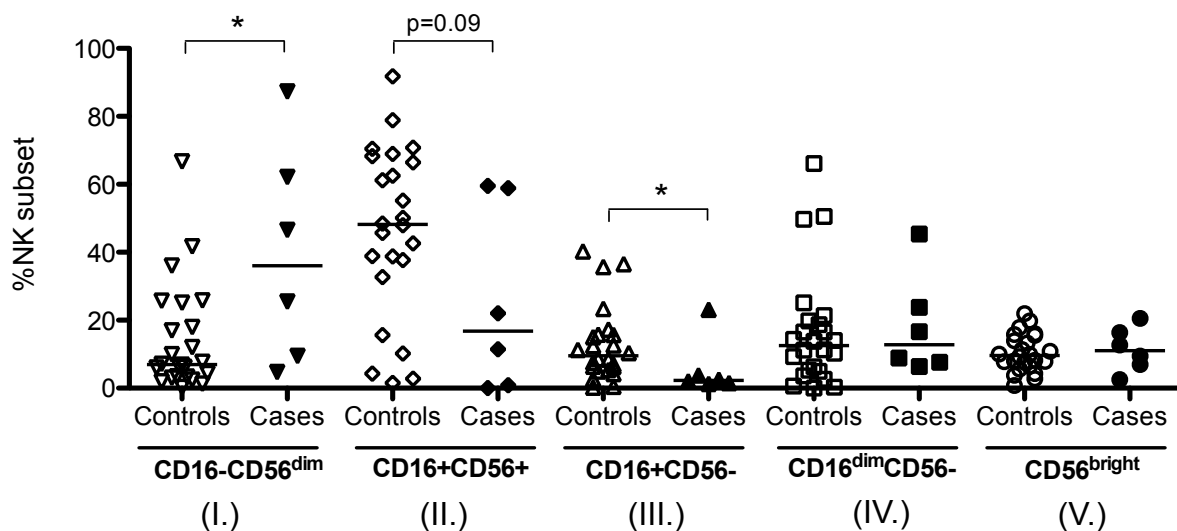


(b) **Controls**

(c) **Cases**



(d)



**Supplemental digital content 2.** NK cell gating strategy based on CD16 and CD56 fluorescence intensity. NK cells were assessed by a refined gating strategy, including CD56<sup>dim</sup>CD16<sup>neg</sup> (I.), CD56<sup>+</sup>CD16<sup>+</sup> (II.), CD16<sup>bright</sup>CD56<sup>neg</sup> (III.), CD16<sup>dim</sup>CD56<sup>neg</sup> (IV.), and CD56<sup>bright</sup> (V) NK cells (a). The phenotypic distribution of NK cell subsets: pie charts display median frequencies of each of the 5 NK cell subsets in either controls (b) or cases (c). Comparison of NK cell subset proportions (gates I-V) between controls (N=26) and cases (N=6); lines represent the medians for a given subset (d). Statistics were generated via a Mann-Whitney test (\*  $p < 0.05$ ).