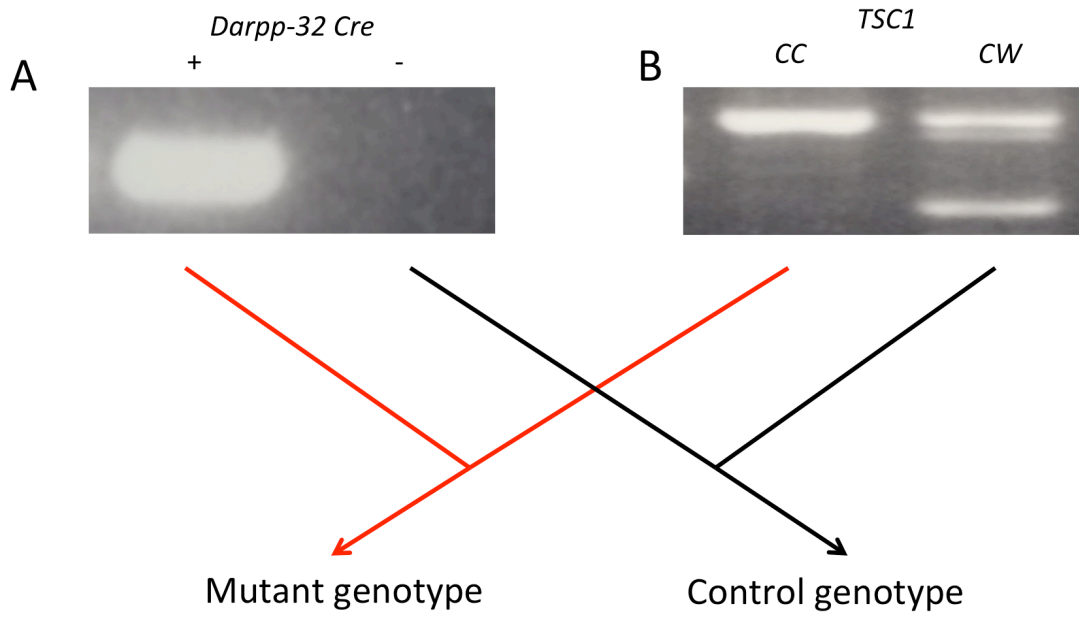
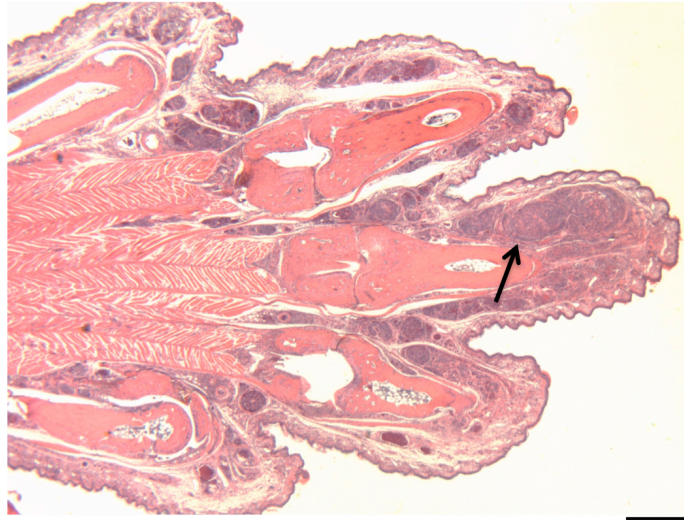


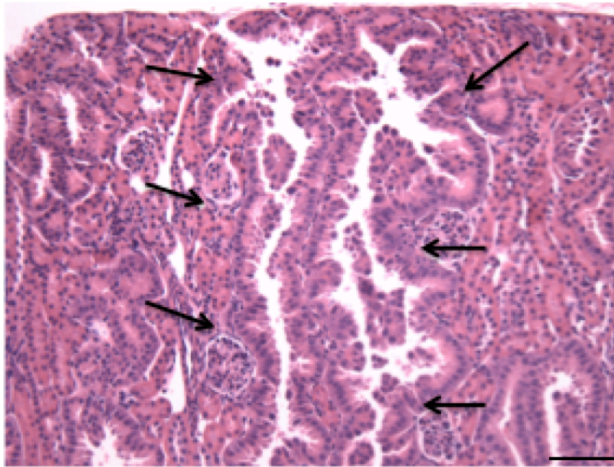
Supplementary Figure 1



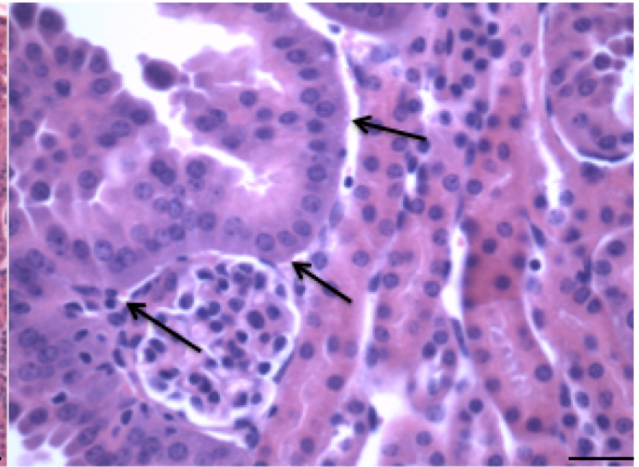
Supplementary Figure 2 A



B



C



**Supplemental figure legends:**

**Supplementary Figure 1. Genotyping *Tsc1<sup>cc</sup> DARPP Cre* mice.** Separate Polymerase Chain Reaction experiments showing *Darpp-32 Cre* allele genotyping (A) and *TSC1* genotyping (B) with *cc* representing the conditional null genotype and *cw* the wild type genotype.

**Supplementary Figure 2.** High magnification of paw and renal morphology. A-C) Hematoxylin and Eosin staining of mutant 17 week old mouse paw and kidney with arrows indicating boundaries between non-tumor and tumor tissue as characterized by vascularized tumor (paw hemangiosarcoma) or hyperplastic epithelial linings (kidney cystadenoma). A) 2X magnification of paw with identifiable hemangiosarcomas surrounding phalanges II through IV. B) 20X magnification showing cortical renal pathology. C) 60X magnification showing glomerular apparatus surrounded by hyperplastic epithelial tumor tissue. 2X scale bar = 1mm, 20X scale bar = 100 um, 60X scale bar = 33 um.