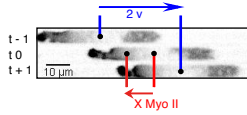
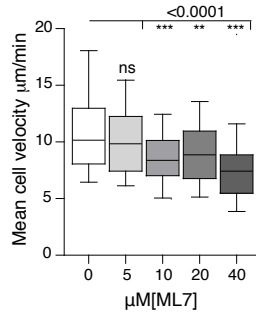


A



B



C

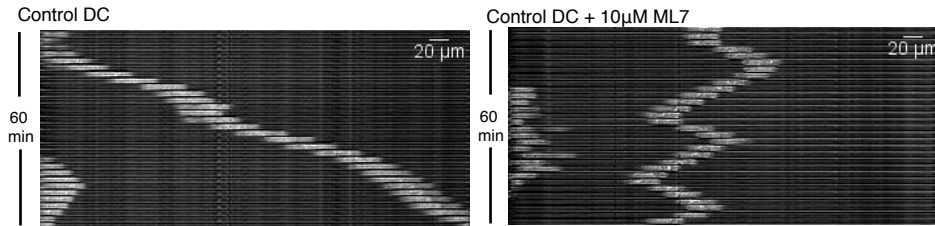


Figure S5

A: Scheme showing Myosin II localization related to cell movement. Myosin II position (red vector) was determined as the Myosin II fluorescence center of mass position relative to the geometrical center of the cell. Cell instantaneous speed (blue vector) for the time t was calculated according to the cell position at $t-1$ and $t+1$.

B: Median instantaneous speeds of immature DCs in the presence of incrementing amounts of ML7 or DMSO as control ($n > 170$ cells from two independent experiments). Boxes illustrate 10-90 percentiles of values and whiskers represent the range of values. P-values were calculated with a Kruskal-wallis test.

C: Sequential transmission images (20X magnification) of a representative control DC (Top) and a DC treated with $10 \mu\text{M}$ of ML7 (Bottom) while migrating in micro-channels.