

ITS neighbour joining

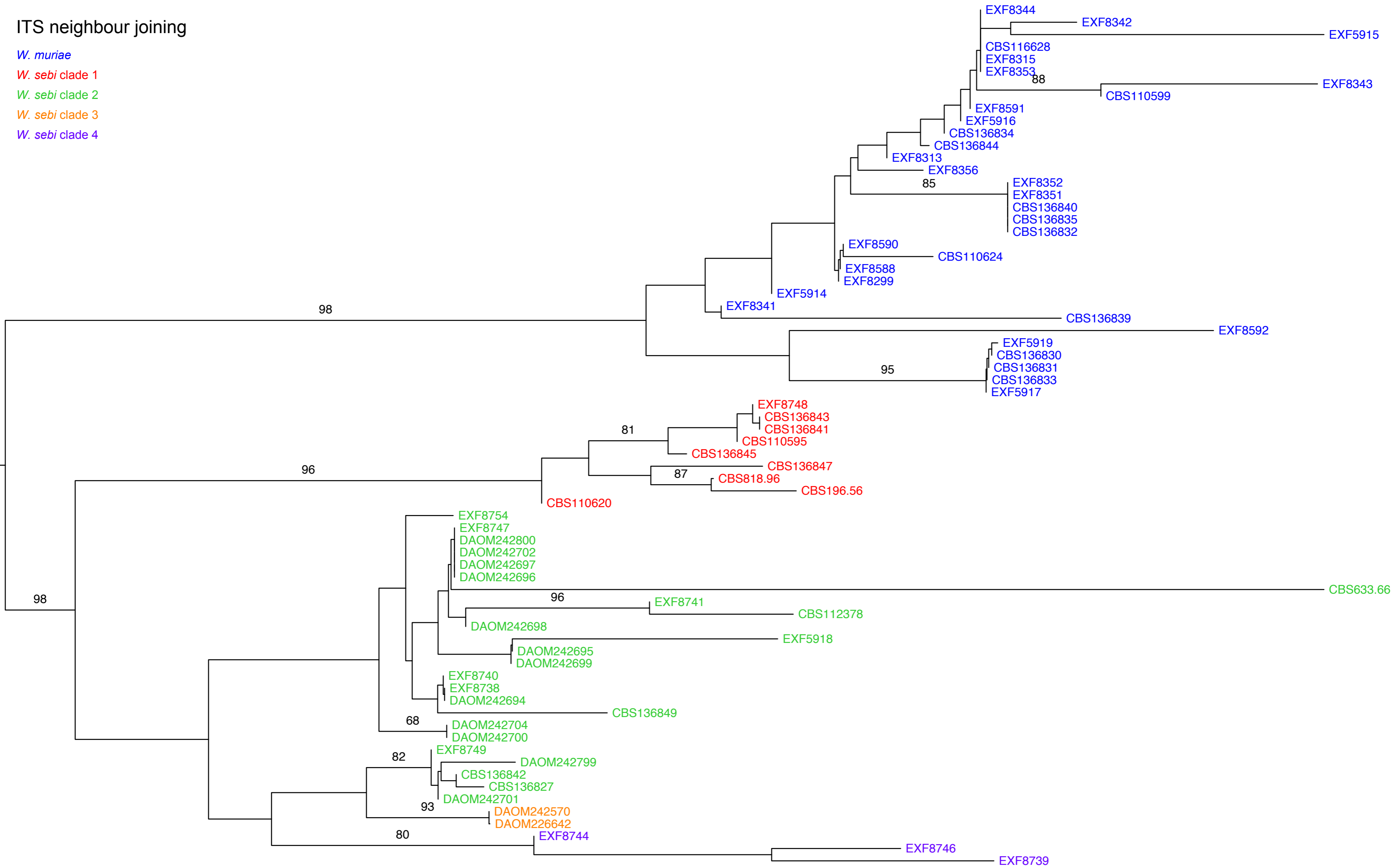
W. muriae

W. sebi clade 1

W. sebi clade 2

W. sebi clade 3

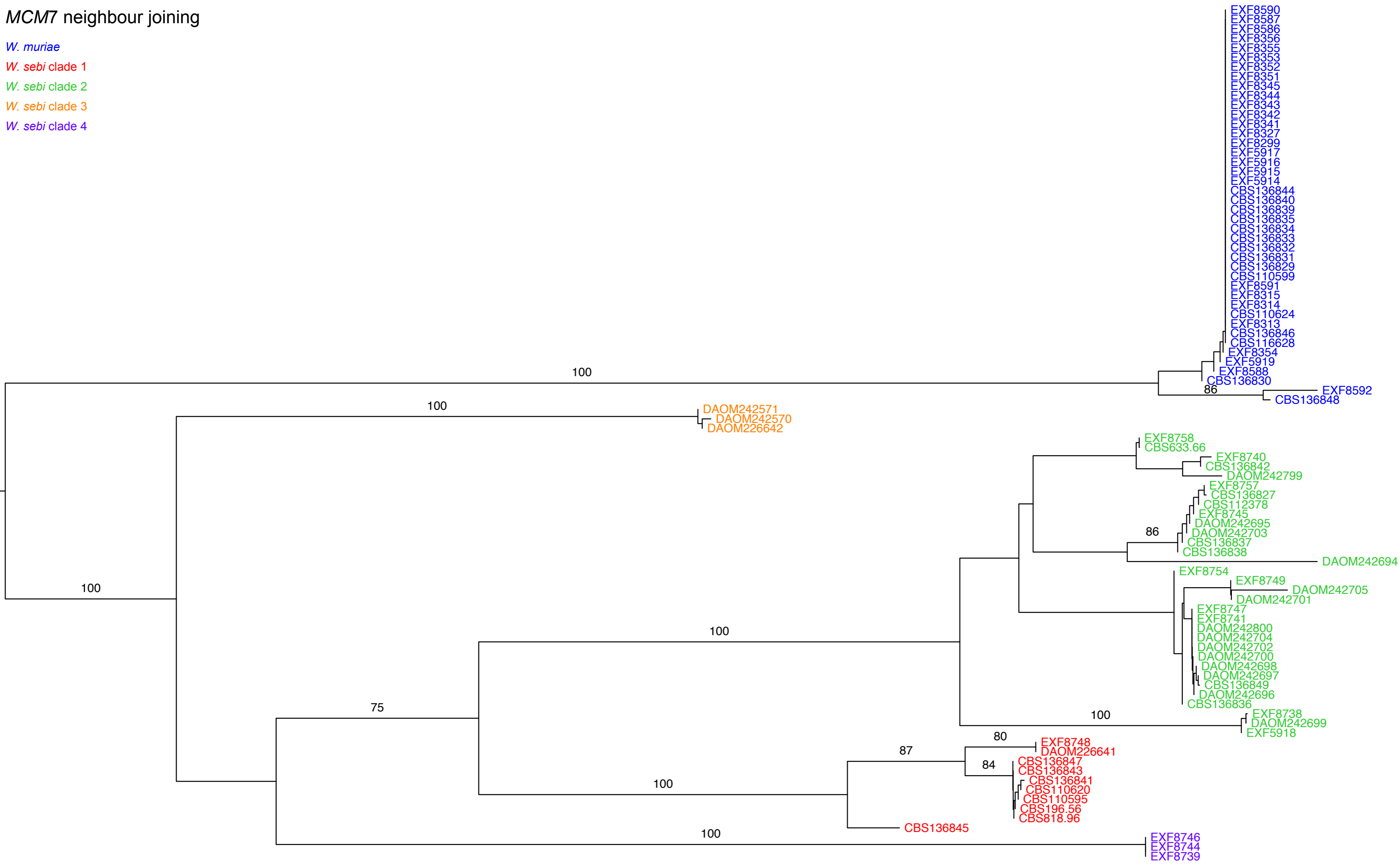
W. sebi clade 4



0.0050

MCM7 neighbour joining

- W. muriae*
- W. sebi* clade 1
- W. sebi* clade 2
- W. sebi* clade 3
- W. sebi* clade 4



0.0080

RPB1 neighbour joining

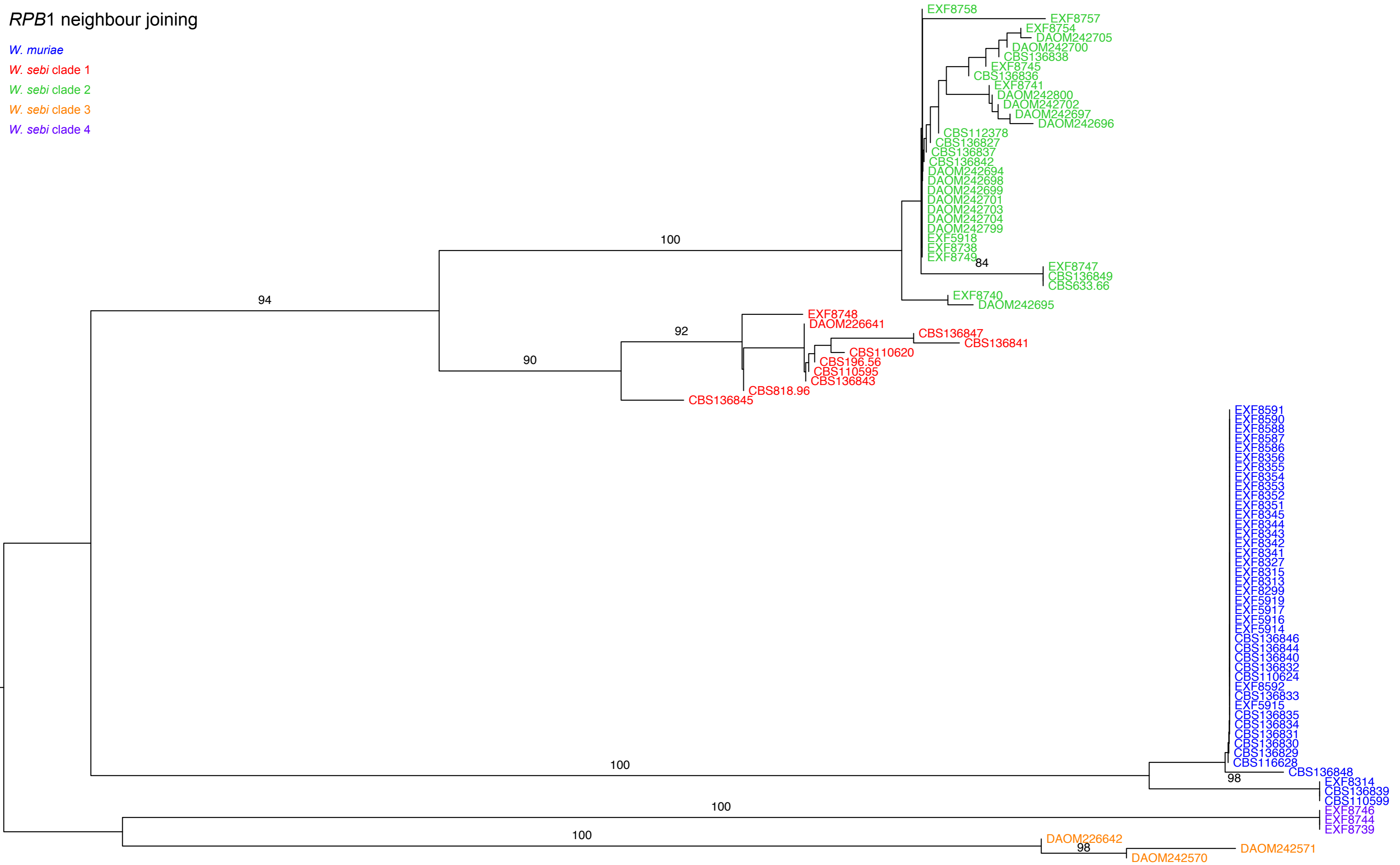
W. muriae

W. sebi clade 1

W. sebi clade 2

W. sebi clade 3

W. sebi clade 4



0.0070

RPB2 neighbour joining

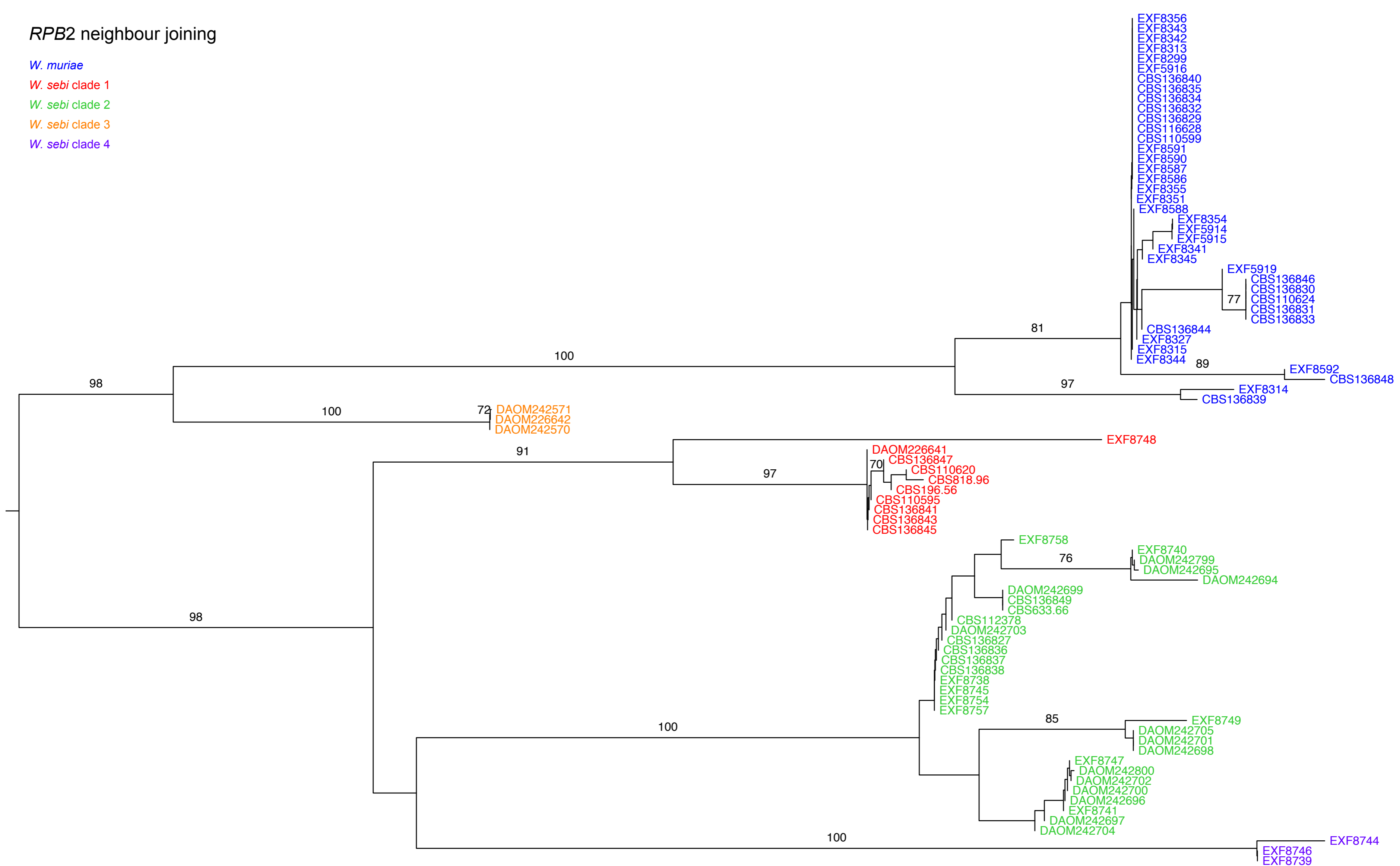
W. muriae

W. sebi clade 1

W. sebi clade 2

W. sebi clade 3

W. sebi clade 4



0.0030

TSR1 neighbour joining

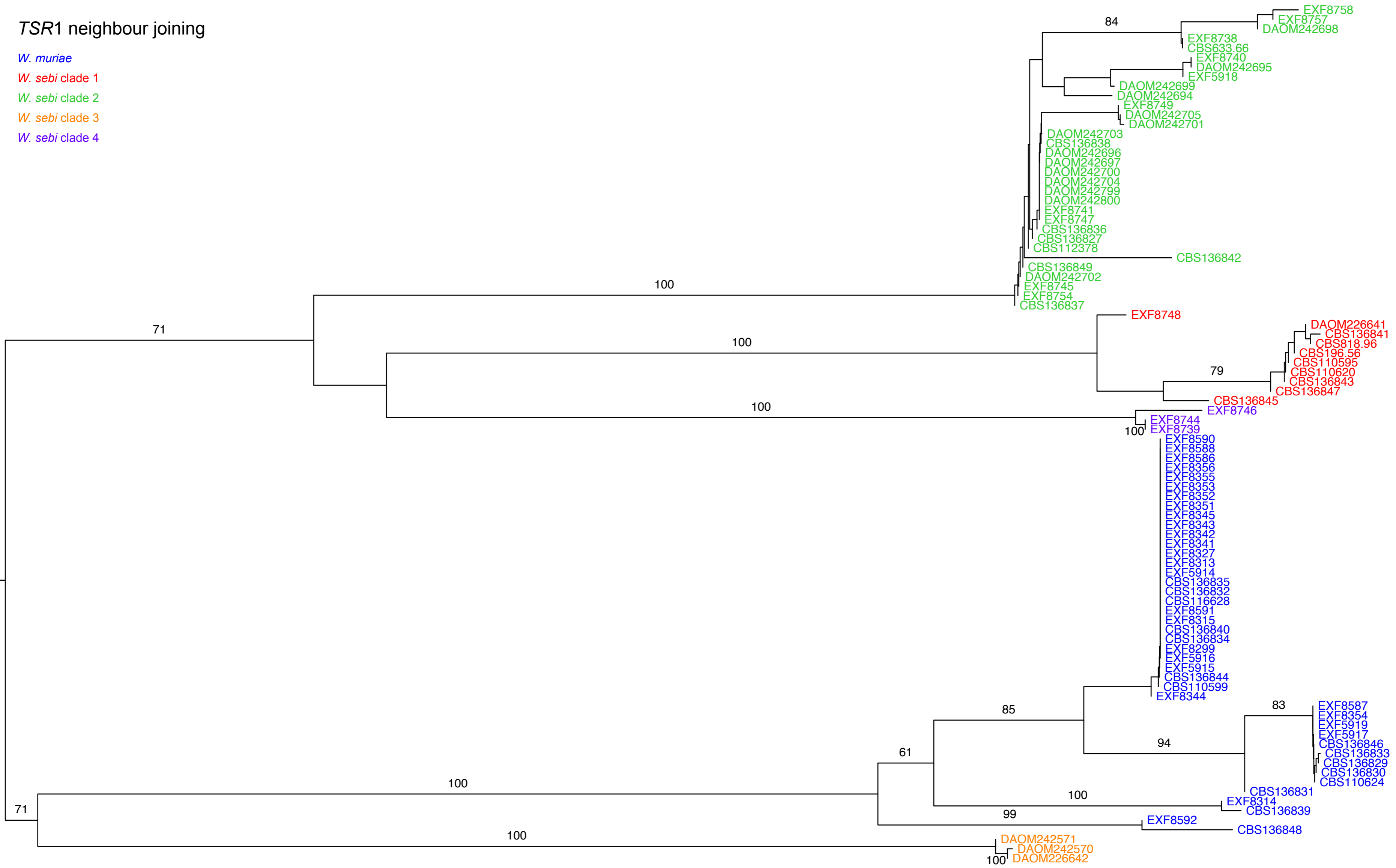
W. muriae

W. sebi clade 1

W. sebi clade 2

W. sebi clade 3

W. sebi clade 4



0.0030

ITS strict parsimony

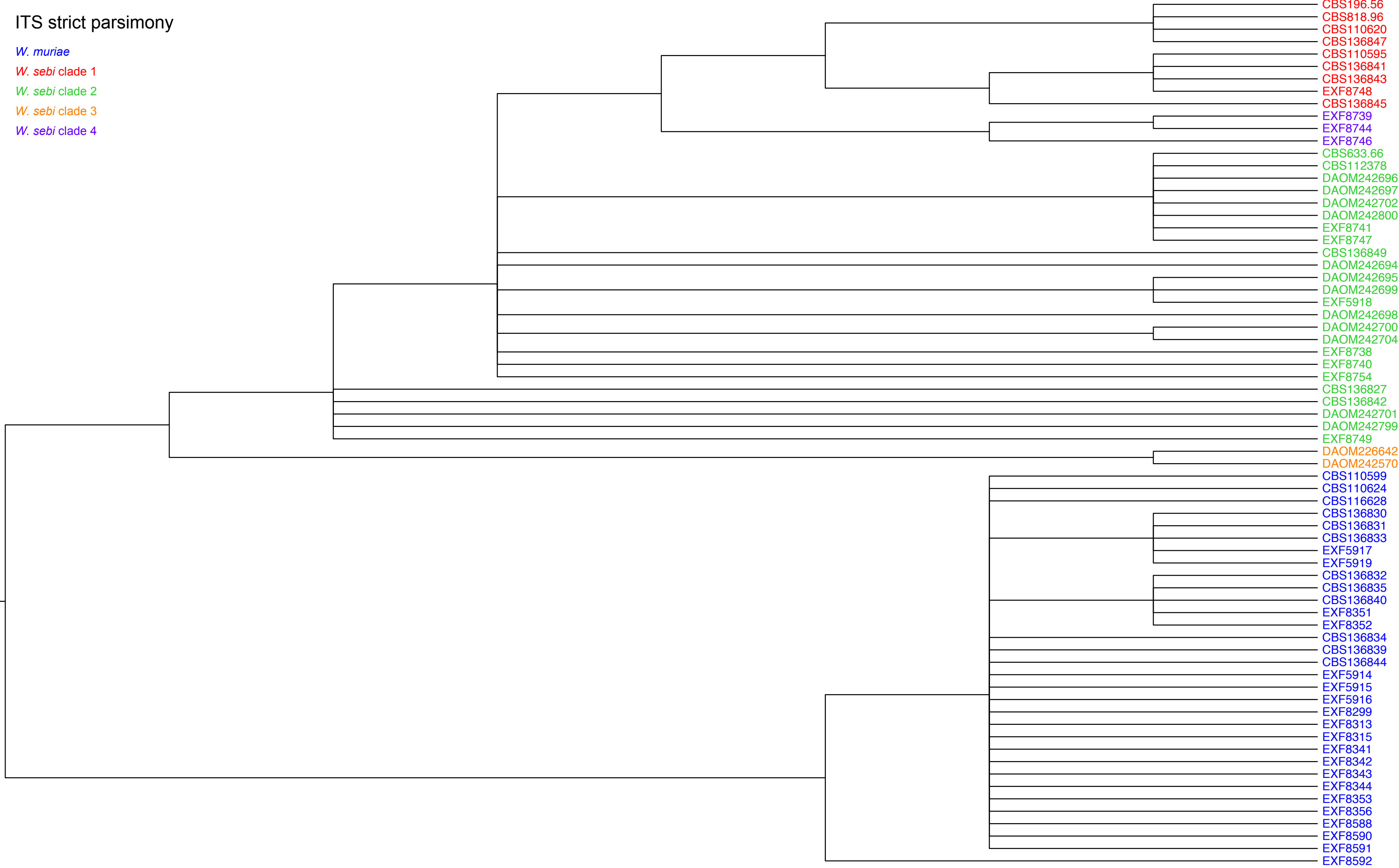
W. muriae

W. sebi clade 1

W. sebi clade 2

W. sebi clade 3

W. sebi clade 4



MCM7 strict parsimony

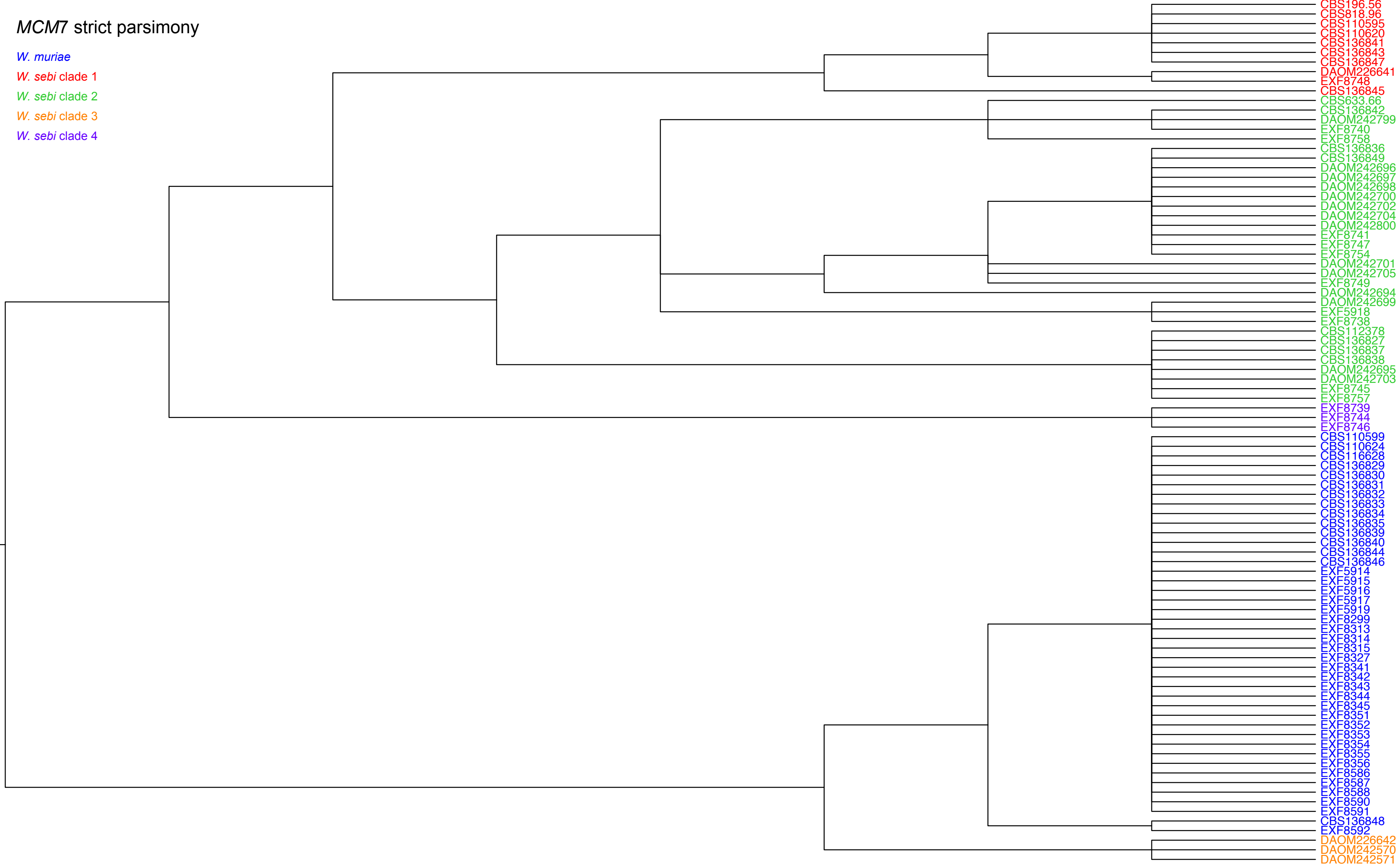
W. muriae

W. sebi clade 1

W. sebi clade 2

W. sebi clade 3

W. sebi clade 4



- CBS196.56
- CBS818.96
- CBS110595
- CBS110620
- CBS136841
- CBS136843
- CBS136847
- DAOM226641
- EXF8748
- CBS136845
- CBS633.66
- CBS136842
- DAOM242799
- EXF8740
- EXF8758
- CBS136836
- CBS136849
- DAOM242696
- DAOM242697
- DAOM242698
- DAOM242700
- DAOM242702
- DAOM242704
- DAOM242800
- EXF8741
- EXF8747
- EXF8754
- DAOM242701
- DAOM242705
- EXF8749
- DAOM242694
- DAOM242699
- EXF5918
- EXF8738
- CBS112378
- CBS136827
- CBS136837
- CBS136838
- DAOM242695
- DAOM242703
- EXF8745
- EXF8757
- EXF8739
- EXF8744
- EXF8746
- CBS110599
- CBS110624
- CBS116628
- CBS136829
- CBS136830
- CBS136831
- CBS136832
- CBS136833
- CBS136834
- CBS136835
- CBS136839
- CBS136840
- CBS136844
- CBS136846
- EXF5914
- EXF5915
- EXF5916
- EXF5917
- EXF5919
- EXF8299
- EXF8313
- EXF8314
- EXF8315
- EXF8327
- EXF8341
- EXF8342
- EXF8343
- EXF8344
- EXF8345
- EXF8351
- EXF8352
- EXF8353
- EXF8354
- EXF8355
- EXF8356
- EXF8586
- EXF8587
- EXF8588
- EXF8590
- EXF8591
- CBS136848
- EXF8592
- DAOM226642
- DAOM242570
- DAOM242571

RPB1 strict parsimony

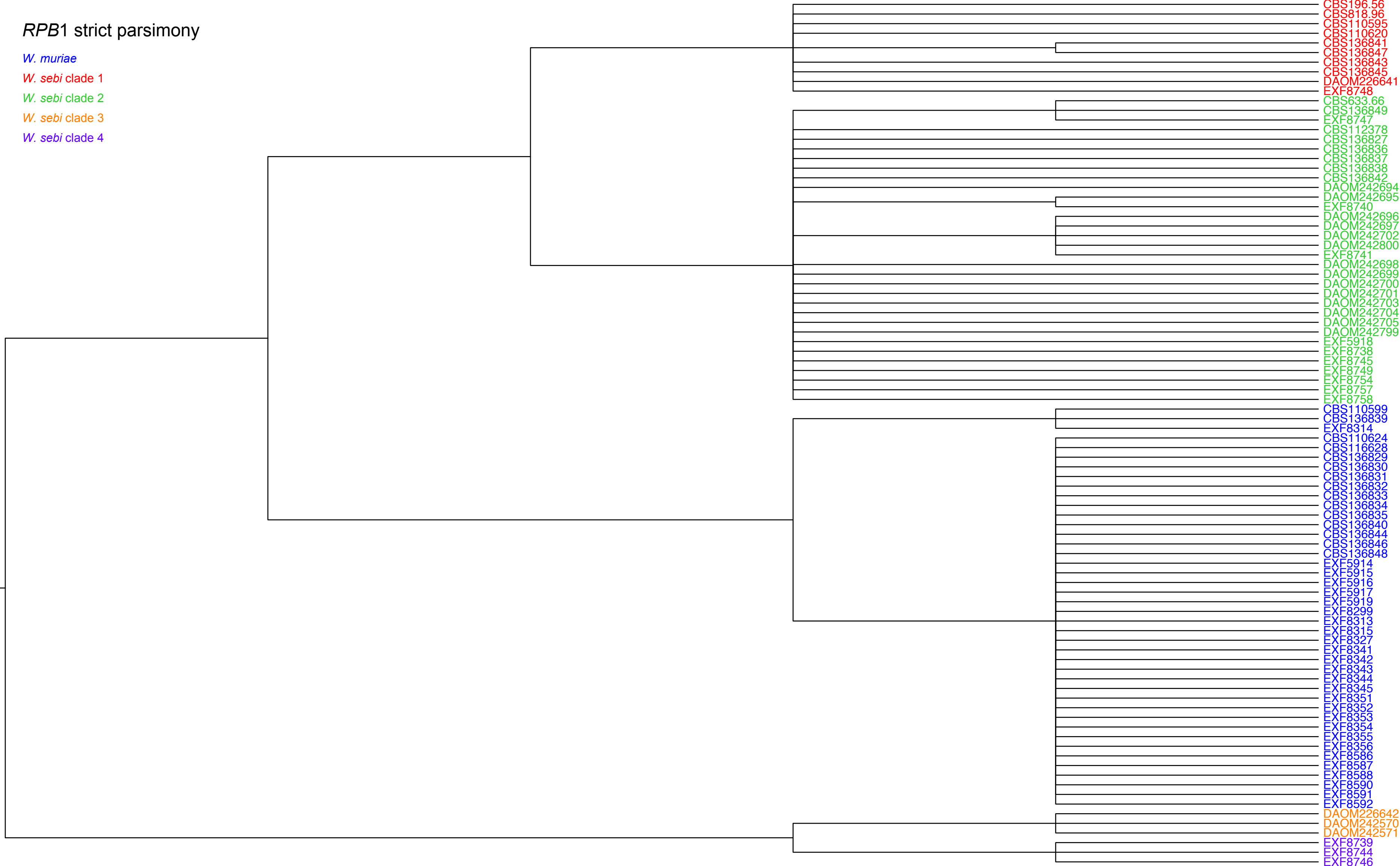
W. muriae

W. sebi clade 1

W. sebi clade 2

W. sebi clade 3

W. sebi clade 4



- CBS196.56
- CBS818.96
- CBS110595
- CBS110620
- CBS136841
- CBS136847
- CBS136843
- CBS136845
- DAOM226641
- EXF8748
- CBS633.66
- CBS136849
- EXF8747
- CBS112378
- CBS136827
- CBS136836
- CBS136837
- CBS136838
- CBS136842
- DAOM242694
- DAOM242695
- EXF8740
- DAOM242696
- DAOM242697
- DAOM242702
- DAOM242800
- EXF8741
- DAOM242698
- DAOM242699
- DAOM242700
- DAOM242701
- DAOM242703
- DAOM242704
- DAOM242705
- DAOM242799
- EXF5918
- EXF8738
- EXF8745
- EXF8749
- EXF8754
- EXF8757
- EXF8758
- CBS110599
- CBS136839
- EXF8314
- CBS110624
- CBS116628
- CBS136829
- CBS136830
- CBS136831
- CBS136832
- CBS136833
- CBS136834
- CBS136835
- CBS136840
- CBS136844
- CBS136846
- CBS136848
- EXF5914
- EXF5915
- EXF5916
- EXF5917
- EXF5919
- EXF8299
- EXF8313
- EXF8315
- EXF8327
- EXF8341
- EXF8342
- EXF8343
- EXF8344
- EXF8345
- EXF8351
- EXF8352
- EXF8353
- EXF8354
- EXF8355
- EXF8356
- EXF8586
- EXF8587
- EXF8588
- EXF8590
- EXF8591
- EXF8592
- DAOM226642
- DAOM242570
- DAOM242571
- EXF8739
- EXF8744
- EXF8746

RPB2 strict parsimony

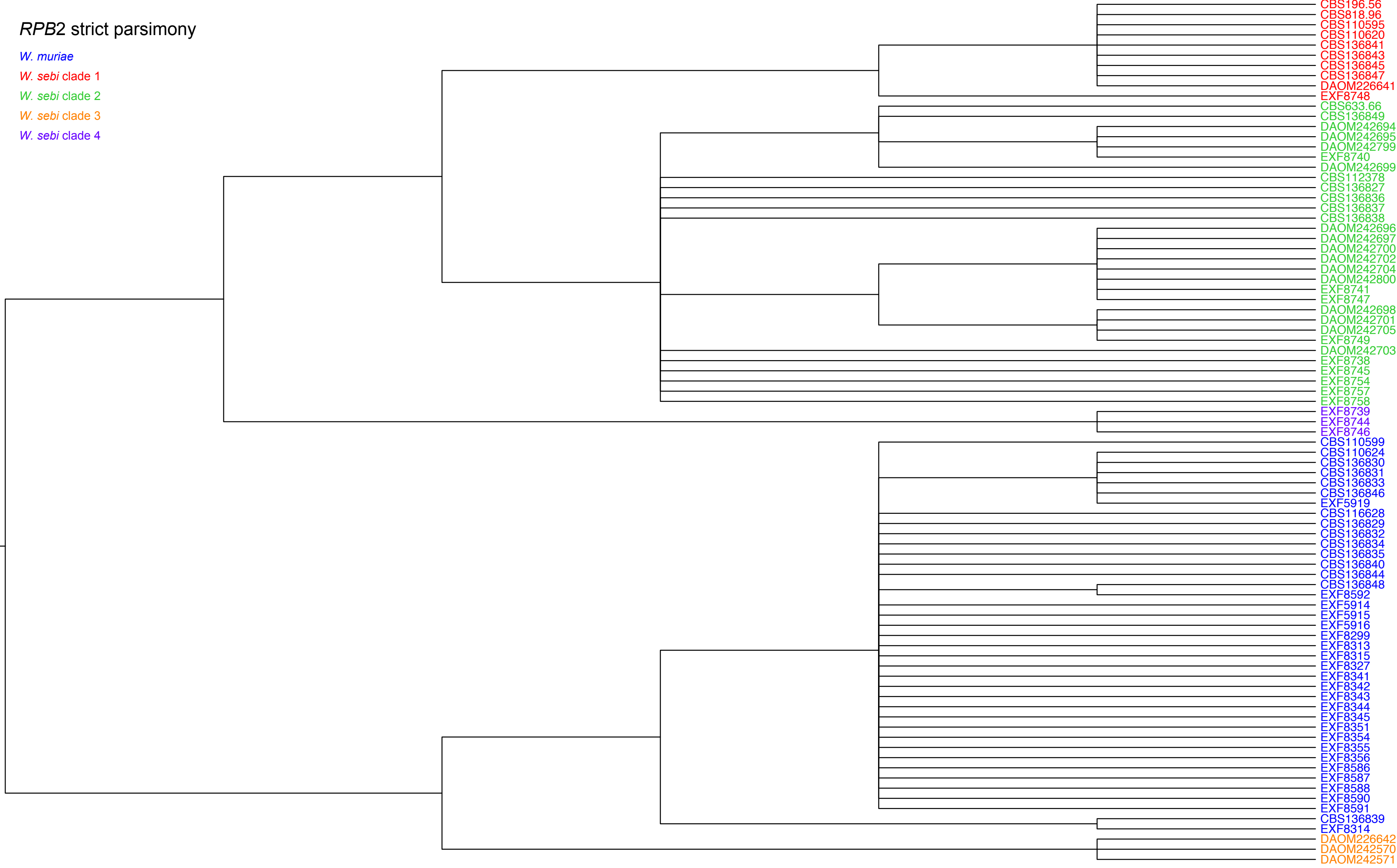
W. muriae

W. sebi clade 1

W. sebi clade 2

W. sebi clade 3

W. sebi clade 4



- CBS196.56
- CBS818.96
- CBS110595
- CBS110620
- CBS136841
- CBS136843
- CBS136845
- CBS136847
- DAOM226641
- EXF8748
- CBS633.66
- CBS136849
- DAOM242694
- DAOM242695
- DAOM242799
- EXF8740
- DAOM242699
- CBS112378
- CBS136827
- CBS136836
- CBS136837
- CBS136838
- DAOM242696
- DAOM242697
- DAOM242700
- DAOM242702
- DAOM242704
- DAOM242800
- EXF8741
- EXF8747
- DAOM242698
- DAOM242701
- DAOM242705
- EXF8749
- DAOM242703
- EXF8738
- EXF8745
- EXF8754
- EXF8757
- EXF8758
- EXF8739
- EXF8744
- EXF8746
- CBS110599
- CBS110624
- CBS136830
- CBS136831
- CBS136833
- CBS136846
- EXF5919
- CBS116628
- CBS136829
- CBS136832
- CBS136834
- CBS136835
- CBS136840
- CBS136844
- CBS136848
- EXF8592
- EXF5914
- EXF5915
- EXF5916
- EXF8299
- EXF8313
- EXF8315
- EXF8327
- EXF8341
- EXF8342
- EXF8343
- EXF8344
- EXF8345
- EXF8351
- EXF8354
- EXF8355
- EXF8356
- EXF8586
- EXF8587
- EXF8588
- EXF8590
- EXF8591
- CBS136839
- EXF8314
- DAOM226642
- DAOM242570
- DAOM242571

TSR1 strict parsimony

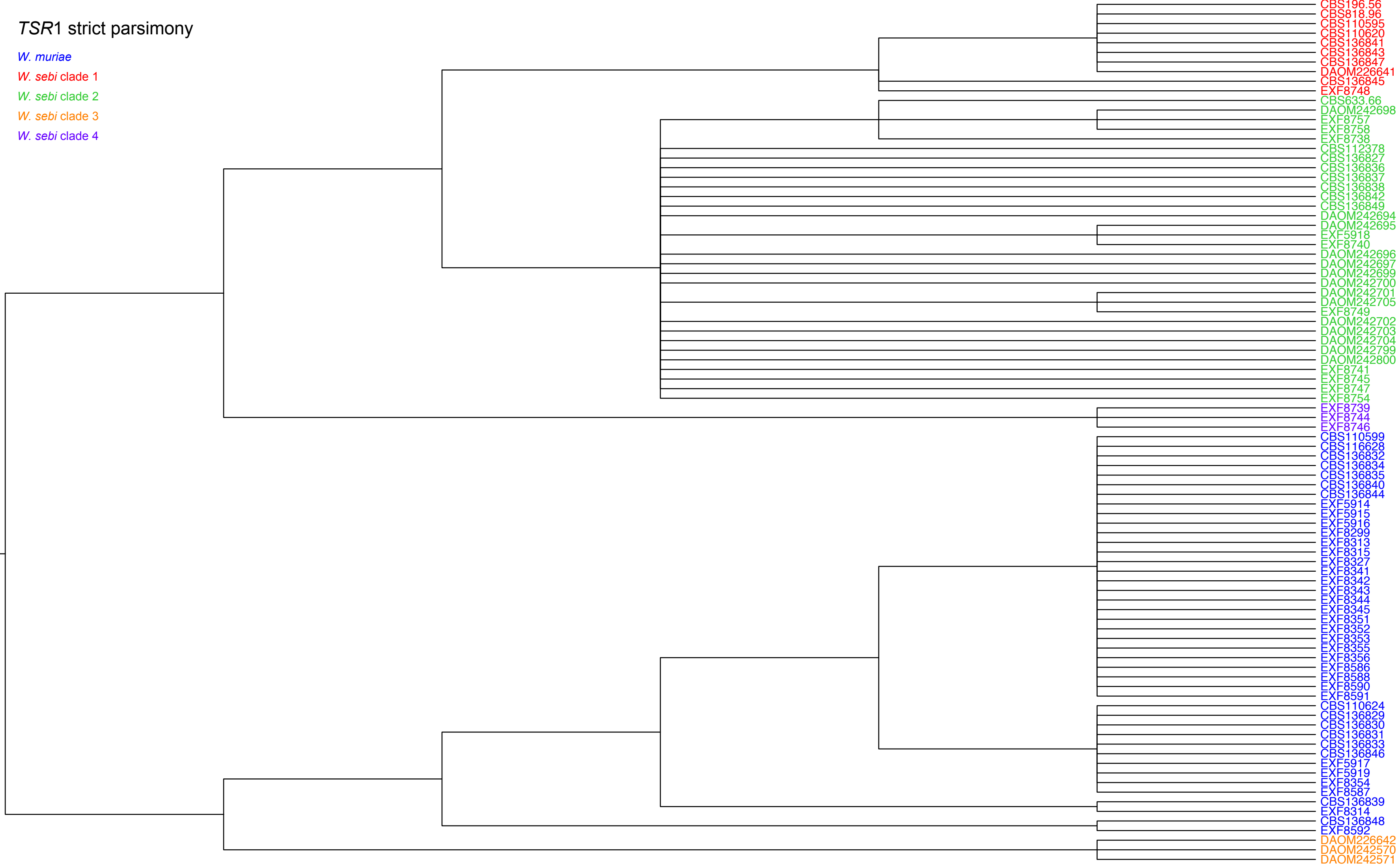
W. muriae

W. sebi clade 1

W. sebi clade 2

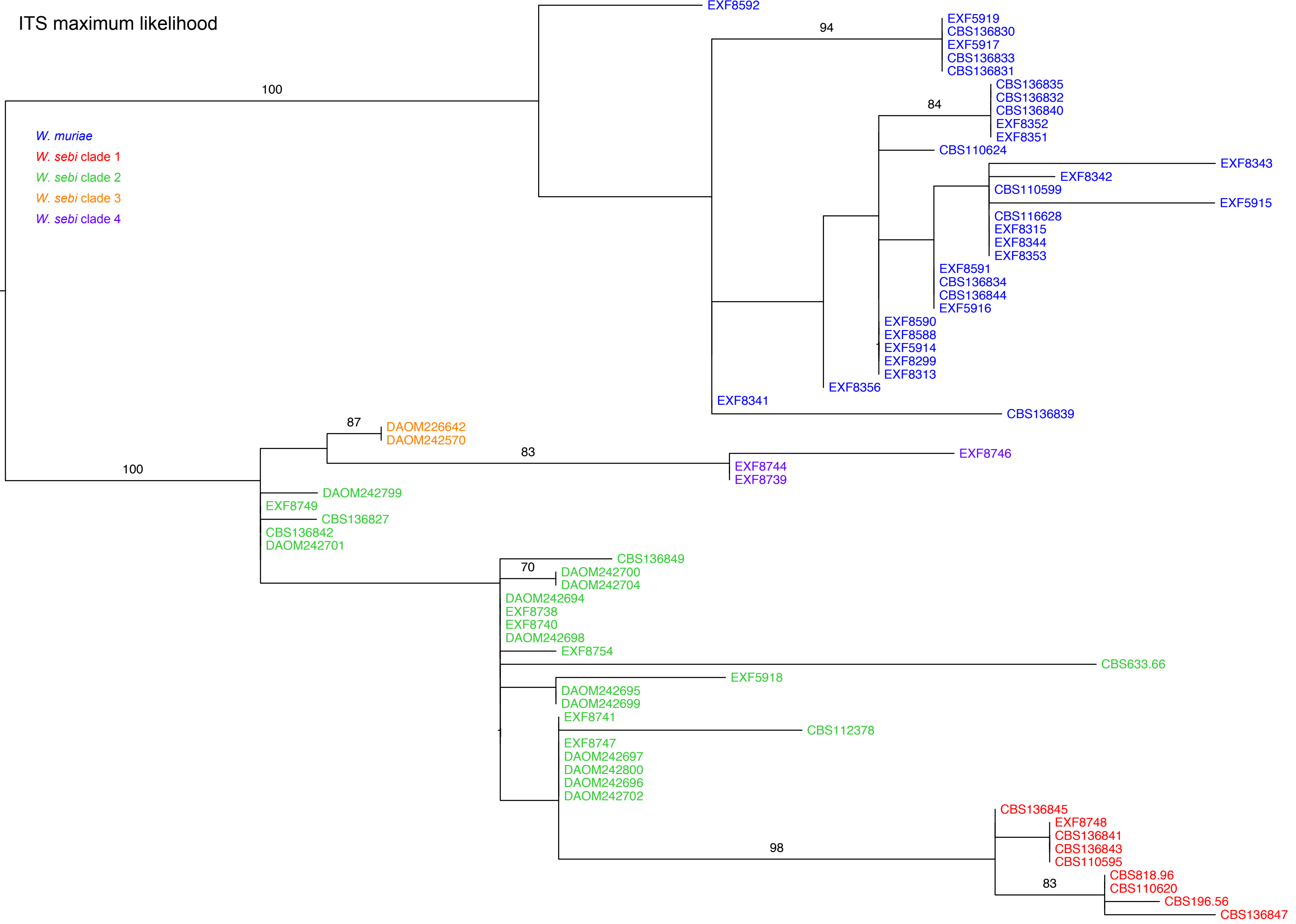
W. sebi clade 3

W. sebi clade 4

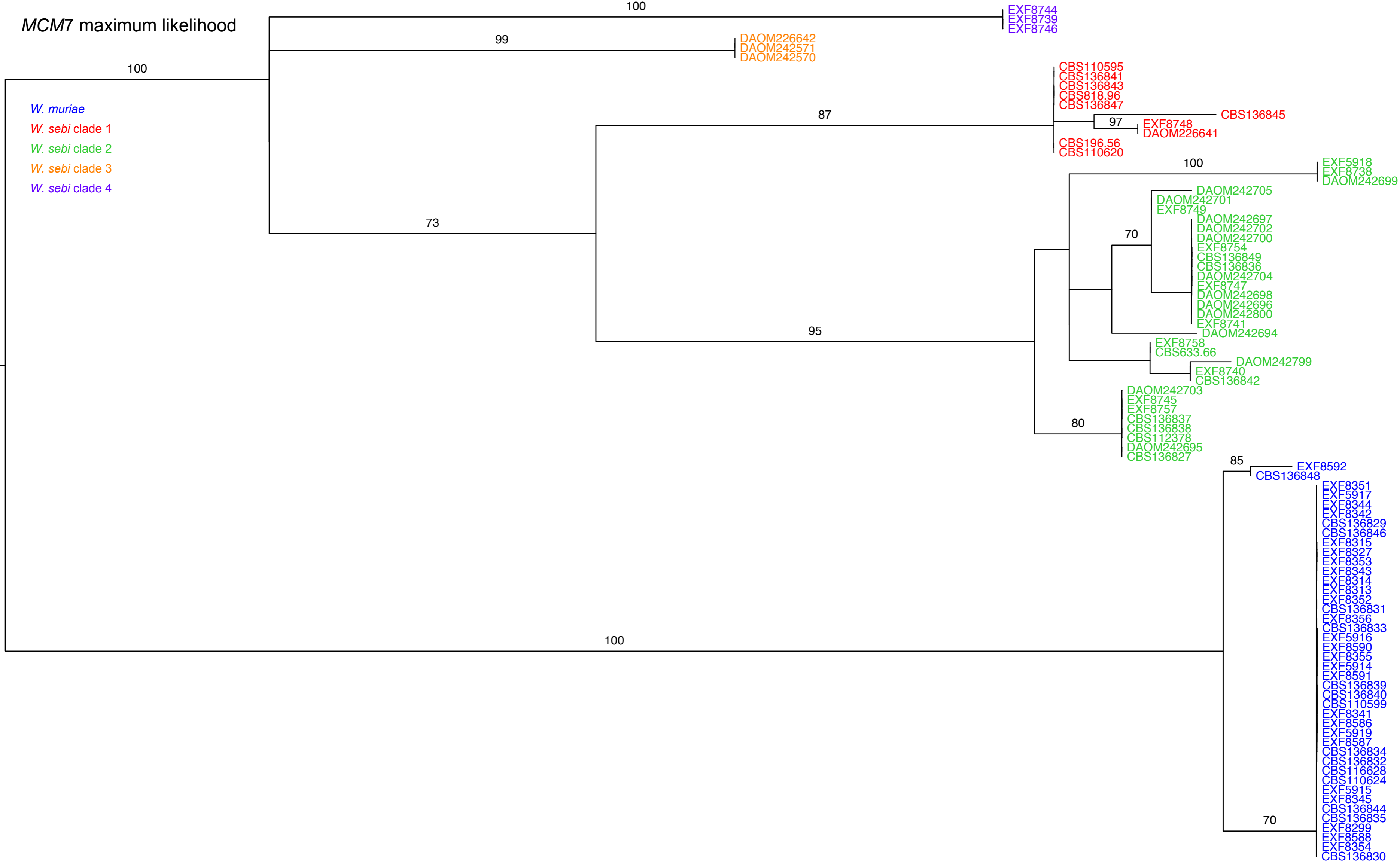


- CBS196.56
- DAOM22641
- CBS136841
- CBS136843
- CBS136847
- CBS136845
- XF8748
- CBS633.66
- DAOM242698
- XF8757
- XF8758
- XF8738
- CBS112378
- CBS136827
- CBS136836
- CBS136837
- CBS136838
- CBS136842
- CBS136849
- DAOM242694
- DAOM242695
- XF5918
- XF8740
- DAOM242696
- DAOM242697
- DAOM242699
- DAOM242700
- DAOM242701
- DAOM242705
- XF8749
- DAOM242702
- DAOM242703
- DAOM242704
- DAOM242799
- DAOM242800
- XF8741
- XF8745
- XF8747
- XF8754
- XF8739
- XF8744
- XF8746
- CBS110599
- CBS116628
- CBS136832
- CBS136834
- CBS136835
- CBS136840
- CBS136844
- XF5914
- XF5915
- XF5916
- XF8299
- XF8313
- XF8315
- XF8327
- XF8341
- XF8342
- XF8343
- XF8344
- XF8345
- XF8351
- XF8352
- XF8353
- XF8355
- XF8356
- XF8586
- XF8588
- XF8590
- XF8591
- CBS110624
- CBS136829
- CBS136830
- CBS136831
- CBS136833
- CBS136846
- XF5917
- XF5919
- XF8354
- XF8587
- CBS136839
- XF8314
- CBS136848
- XF8592
- DAOM22642
- DAOM242570
- DAOM242571

ITS maximum likelihood



MCM7 maximum likelihood



0.02

RPB1 maximum likelihood

W. muriae

W. sebi clade 1

W. sebi clade 2

W. sebi clade 3

W. sebi clade 4

DAOM242571
DAOM242570
DAOM226642

EXF8746
EXF8744
EXF8739

DAOM242705
EXF5918
CBS136837
DAOM242704
91
EXF8747
CBS633.66
CBS136849
DAOM242697
EXF8741
DAOM242702
DAOM242800
DAOM242696
EXF8745
DAOM242700
CBS136838
CBS136827
EXF8738
DAOM242799
EXF8749
DAOM242698
DAOM242694
DAOM242703
CBS112378
EXF8758
CBS136842
DAOM242701
DAOM242699
DAOM242695
EXF8740
EXF8757
CBS136836
EXF8754

99

89

96

80

CBS136845
EXF8748
89
CBS136847
CBS136841
CBS818.96
CBS110620
CBS110595
CBS196.56
CBS136843
DAOM226641

78

CBS110624
CBS136844
EXF8356
EXF5914
CBS136832
CBS136833
EXF8351
EXF8299
EXF8354
CBS136846
EXF8353
CBS136840
EXF8344
EXF8588
EXF8586
EXF8327
EXF8345
EXF5915
EXF8592
EXF8590
CBS136834
EXF8341
CBS136831
EXF5917
EXF8342
EXF8352
CBS136830
EXF8315
EXF5919
EXF8343
EXF8591
EXF8313
EXF8355
EXF5916
CBS116628
CBS136829
EXF8587
CBS136835
CBS136848
CBS136839
EXF8314
CBS110599

98

100

100

100

0.0070

RPB2 maximum likelihood

W. muriae

W. sebi clade 1

W. sebi clade 2

W. sebi clade 3

W. sebi clade 4

CBS196.56 EXF8748
CBS818.96
CBS136847
DAOM226641
CBS136841
CBS136845
CBS110595
CBS110620
CBS136843

DAOM242696
DAOM242704
DAOM242697
DAOM242700
EXF8741
DAOM242800
EXF8747
DAOM242702
EXF8749
DAOM242705
DAOM242698
DAOM242701

CBS136838
EXF8745
EXF8758
CBS136837
EXF8738
CBS112378
DAOM242703
EXF8757
CBS136827
EXF8754
CBS136836
CBS136849
DAOM242699
DAOM242694
DAOM242695
DAOM242799
EXF8740
CBS633.66

DAOM226642
DAOM242570
DAOM242571

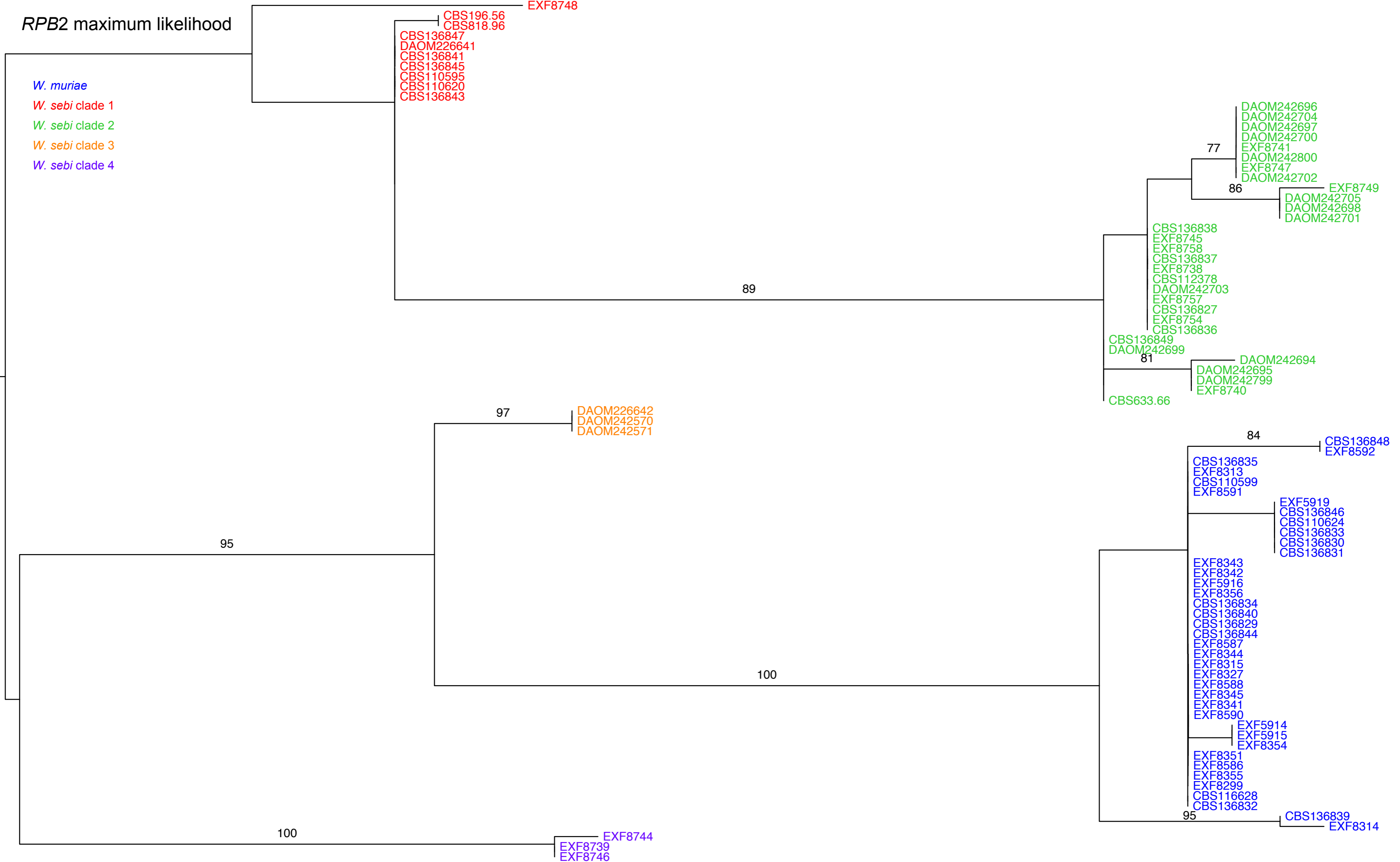
CBS136848
EXF8592
CBS136835
EXF8313
CBS110599
EXF8591
EXF5919
CBS136846
CBS110624
CBS136833
CBS136830
CBS136831

EXF8343
EXF8342
EXF5916
EXF8356
CBS136834
CBS136840
CBS136829
CBS136844
EXF8587
EXF8344
EXF8315
EXF8327
EXF8588
EXF8345
EXF8341
EXF8590
EXF5914
EXF5915
EXF8354
EXF8351
EXF8586
EXF8355
EXF8299
CBS116628
CBS136832

CBS136839
EXF8314

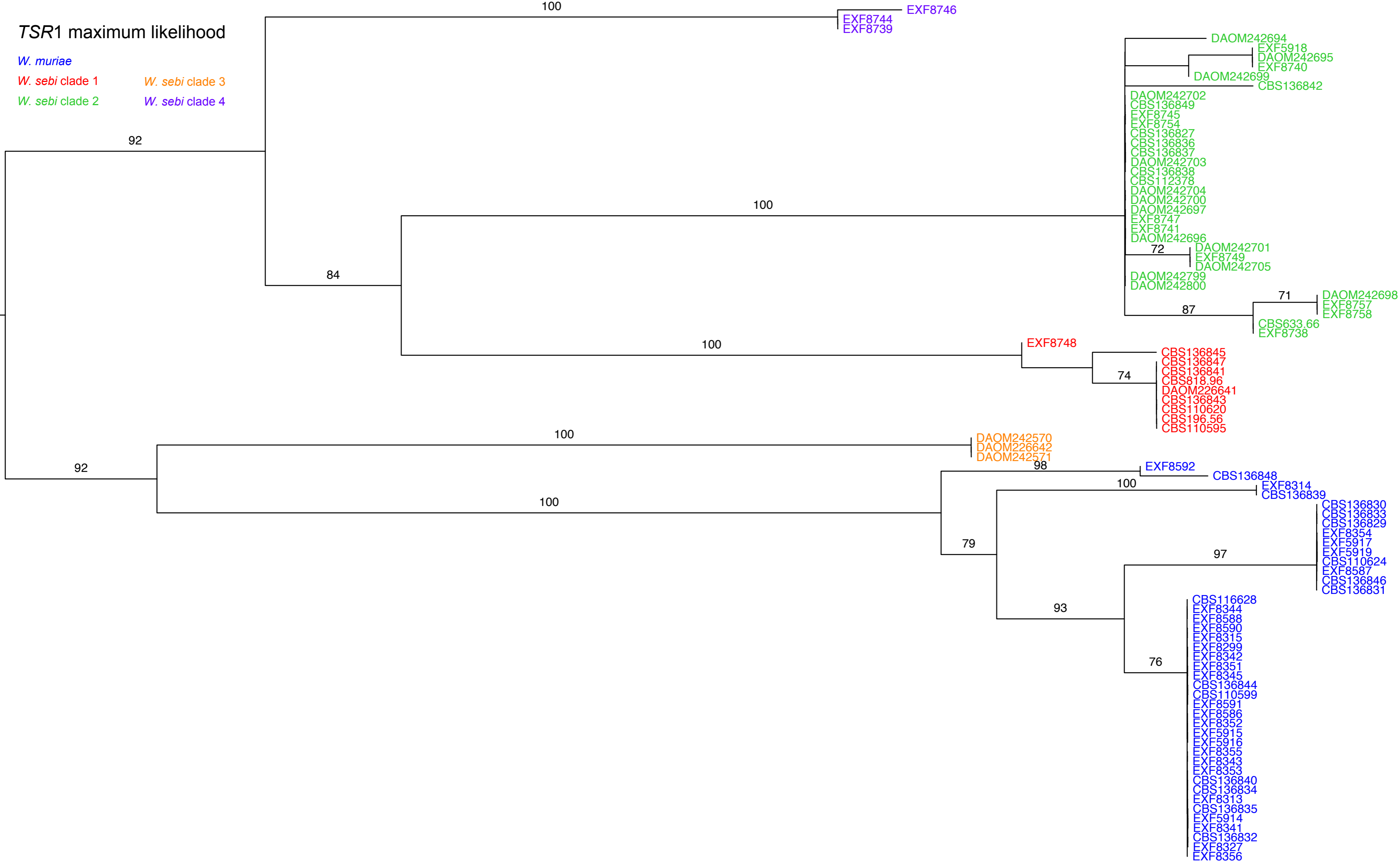
EXF8744
EXF8739
EXF8746

0.0090



TSR1 maximum likelihood

W. muriae
W. sebi clade 1 *W. sebi* clade 3
W. sebi clade 2 *W. sebi* clade 4



0.0070

ITS Bayesian inference

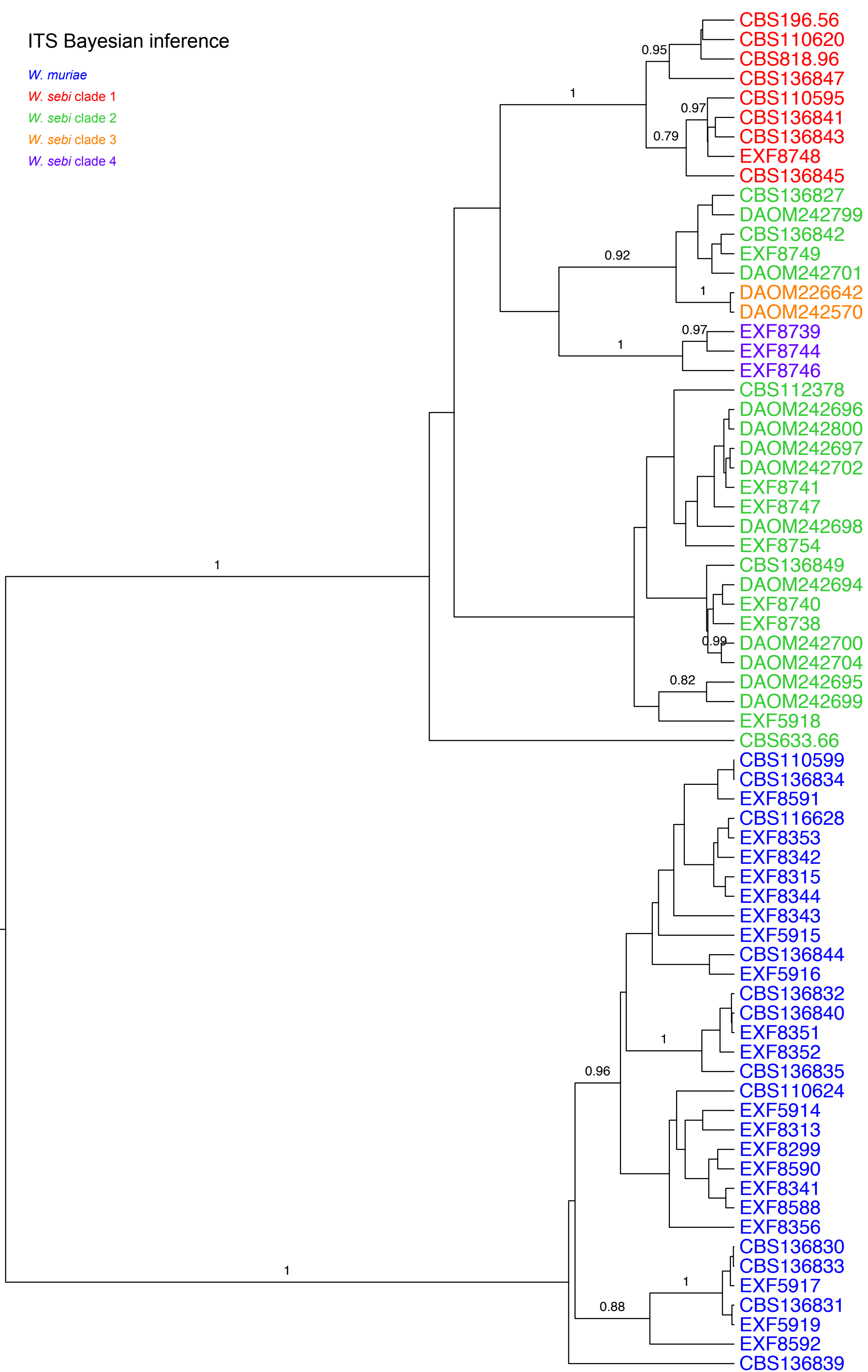
W. muriae

W. sebi clade 1

W. sebi clade 2

W. sebi clade 3

W. sebi clade 4



MCM7 Bayesian inference

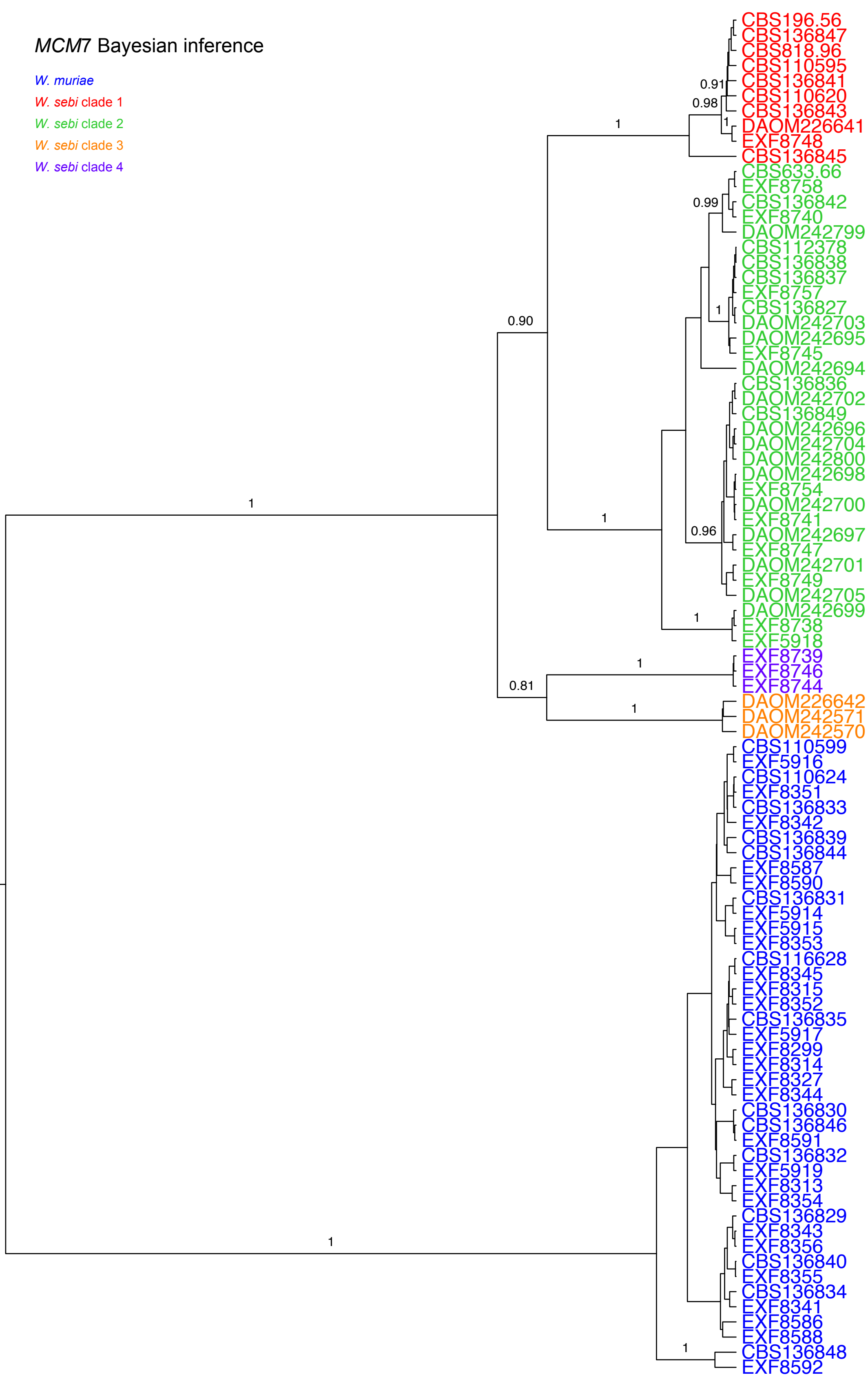
W. muriae

W. sebi clade 1

W. sebi clade 2

W. sebi clade 3

W. sebi clade 4



RPB1 Bayesian inference

W. muriae

W. sebi clade 1

W. sebi clade 2

W. sebi clade 3

W. sebi clade 4



TSR1 Bayesian inference

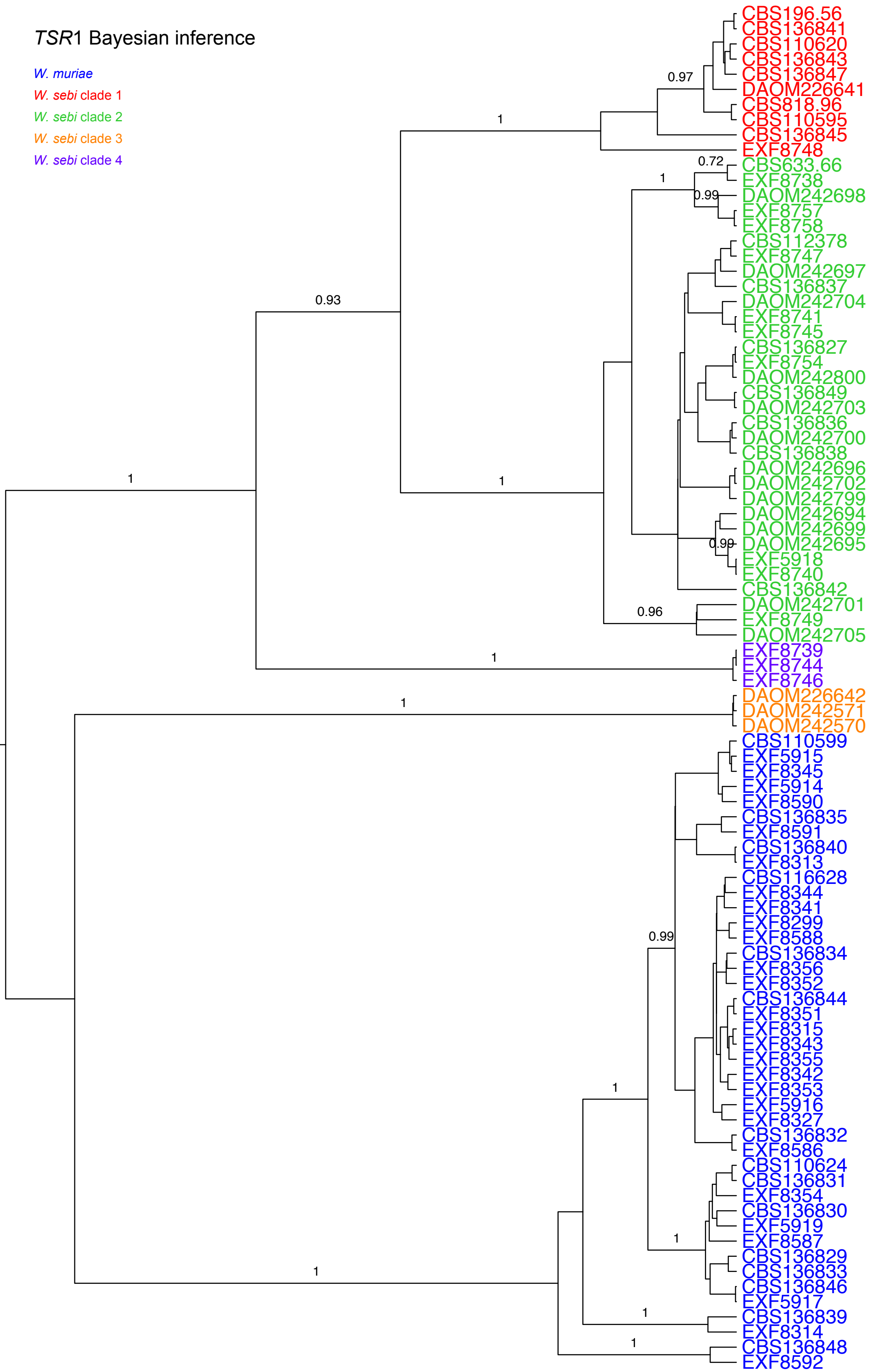
W. muriae

W. sebi clade 1

W. sebi clade 2

W. sebi clade 3

W. sebi clade 4



3.0