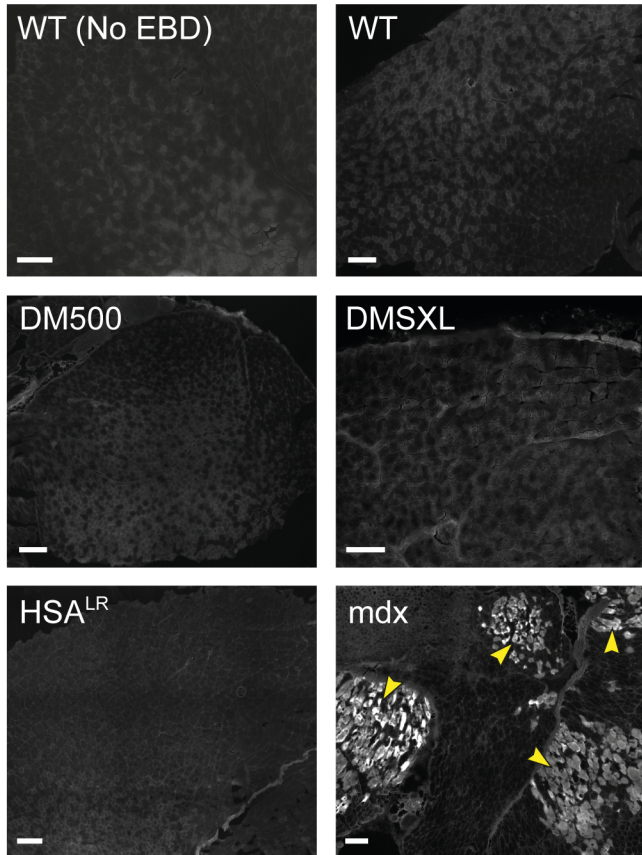
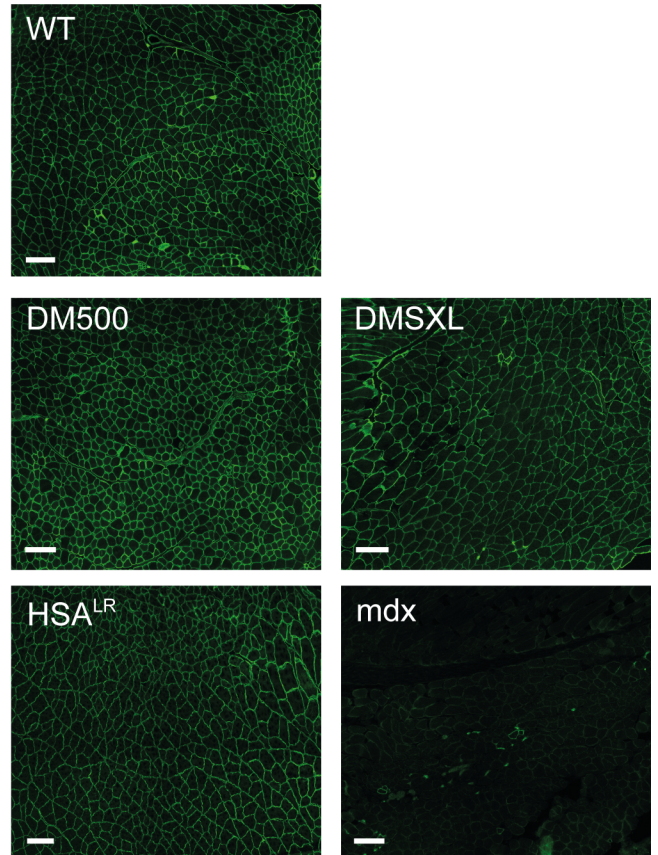


Supporting Figure S1

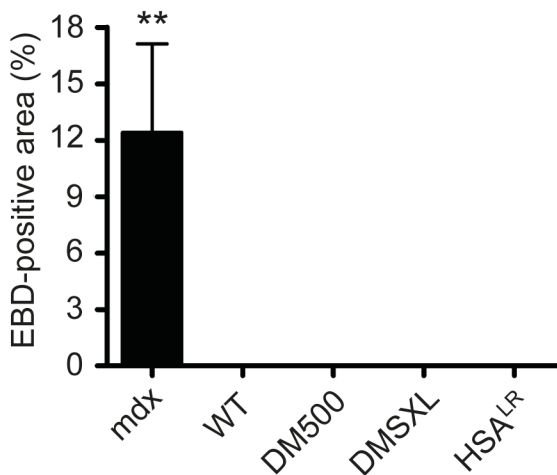
A



C



B



Supporting Fig. S1. Membrane integrity analysis of gastrocnemius muscle. (A)

Representative images of gastrocnemius sections from DM1 mice and controls after injection with EBD after exercise. Scale bars indicate 200 μ m. One WT mouse was not injected to appreciate autofluorescent background signal (No EBD). Areas with EBD-positive fibers were regularly seen in mdx samples (arrowheads) but never in WT nor DM1 model samples. (B) Quantification of percentage of EBD-positive area compared to total muscle section (n=4 per group). (C) Representative images of gastrocnemius sections stained for dystrophin. Scale bars indicate 150 μ m. Staining intensity and pattern observed in WT animals were very similar to those observed in DM500, DMSXL and HSA^{LR} mice. As expected, essentially no signal was detected in mdx mice.