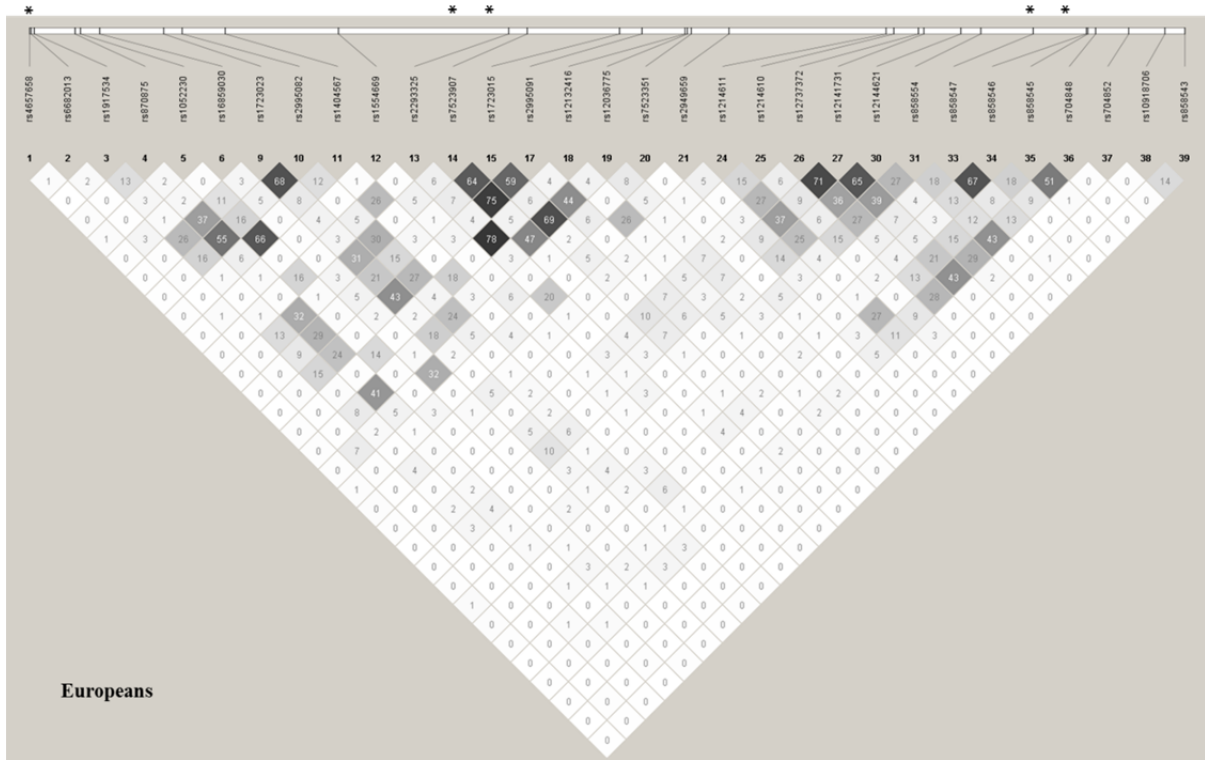
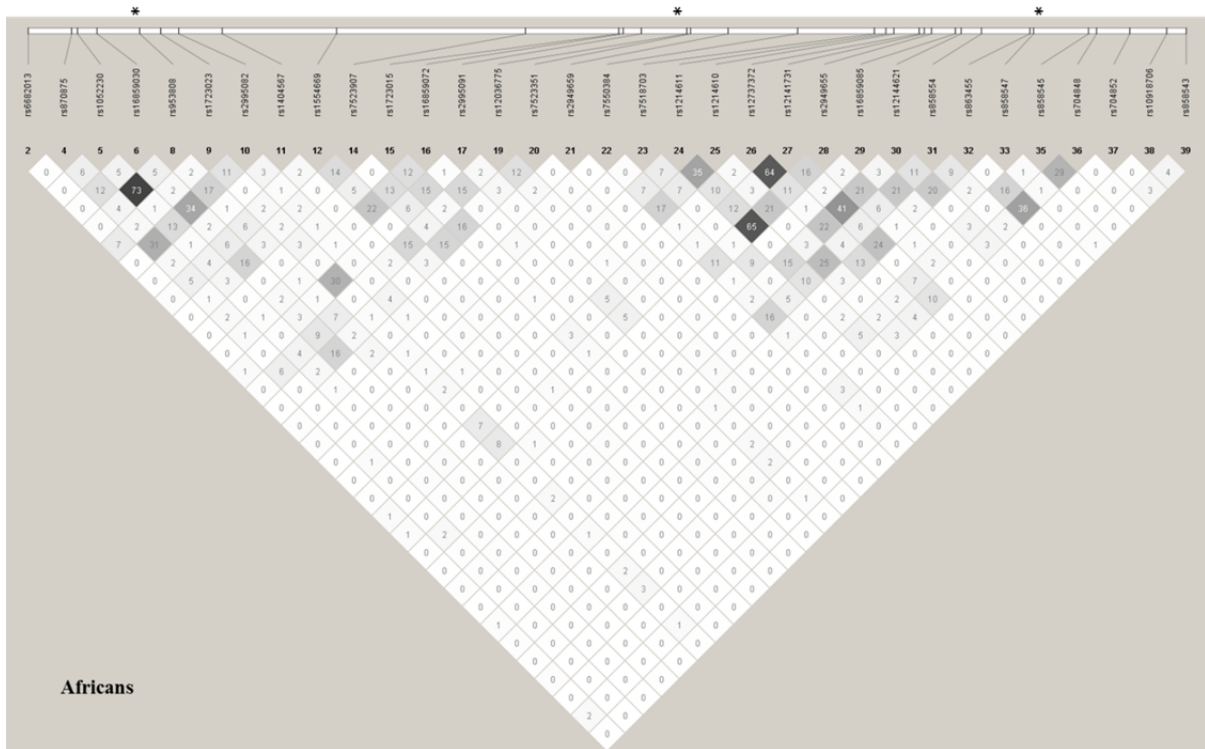
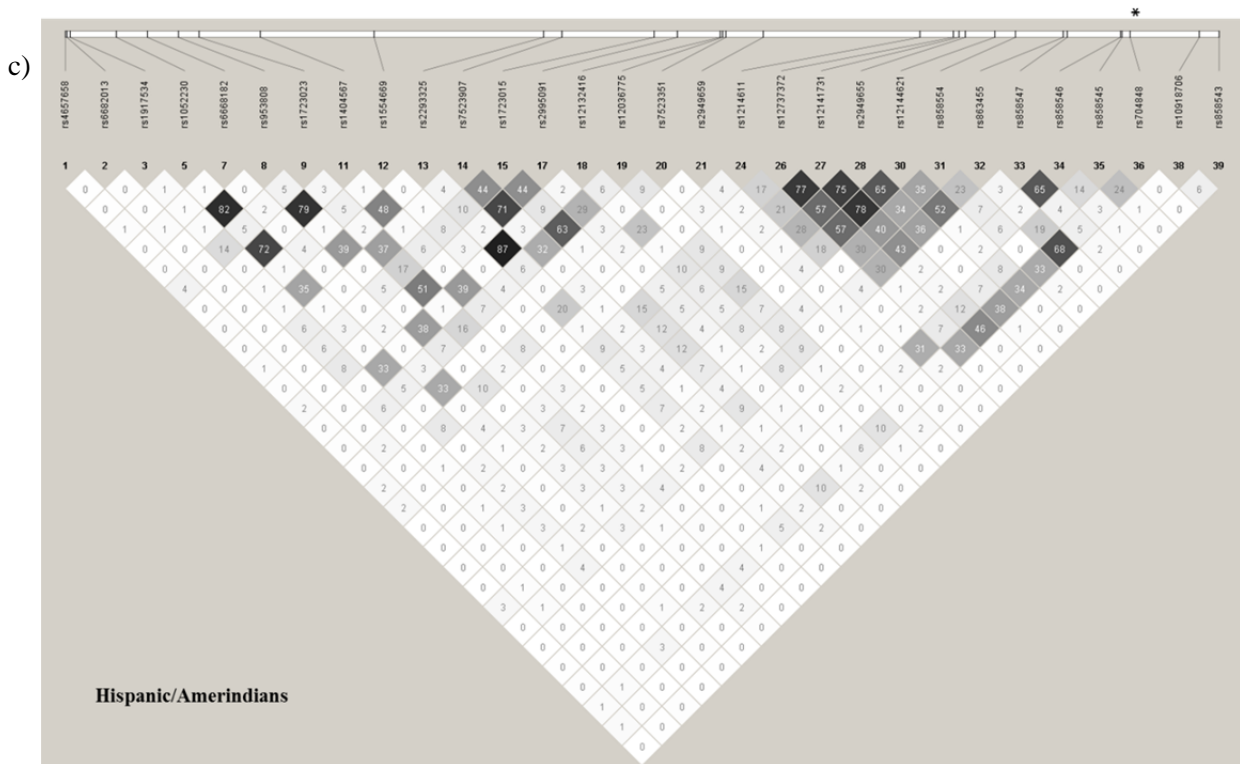


a)



b)





Supplementary Figure S2. Linkage disequilibrium plots for the genotyped SNPs in *CD247* in: a) the European population (31 SNPs); b) the African population (33 SNPs); and c) the Hispanic/Amerindian population (30 SNPs). These plots were obtained with Haploview 4.2 using the pairwise R-square color scheme in a grey scale. *Significant P -value under the additive model and adjusted for the first three principal components and gender ($P_{\text{adj}} < 0.05$).