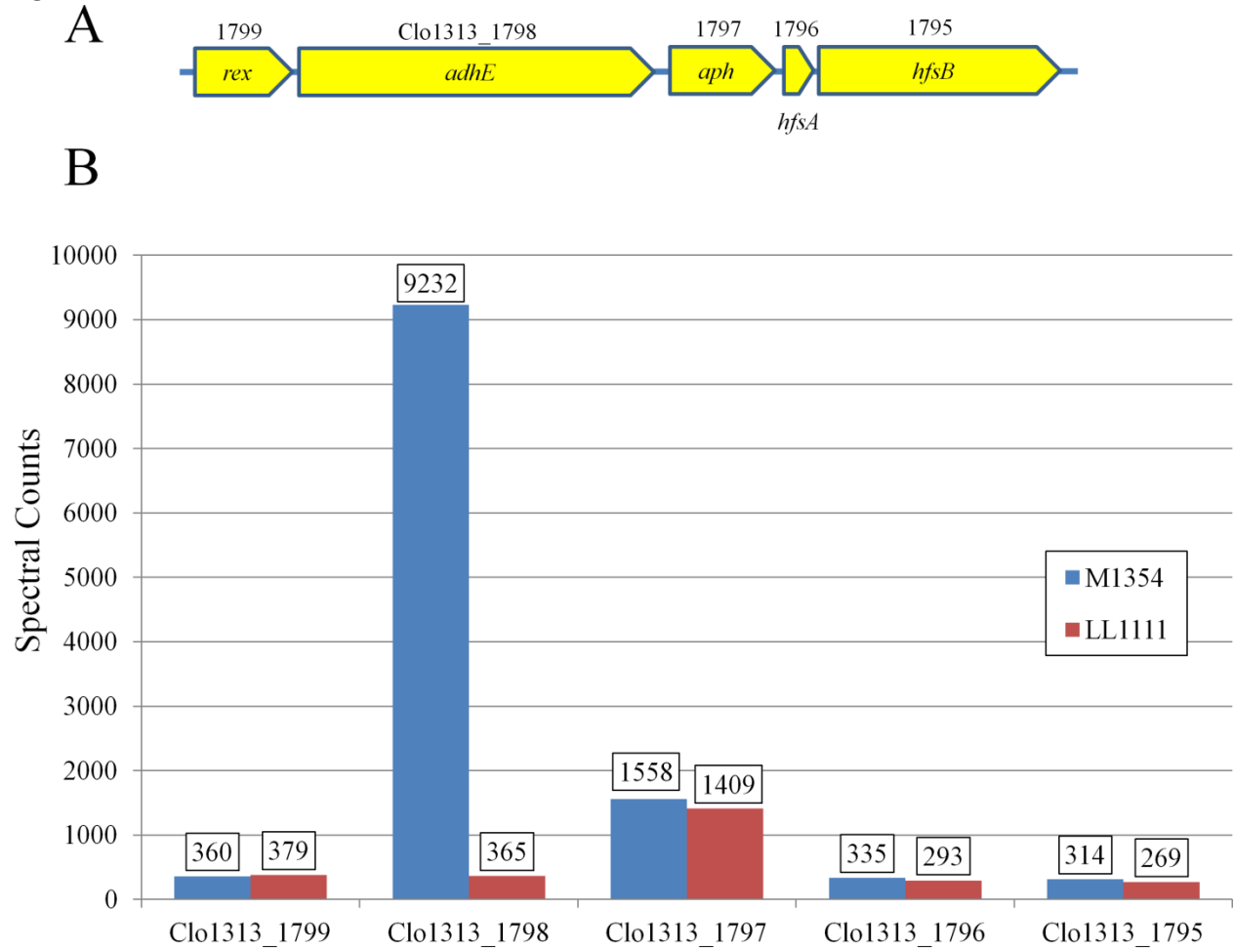


Supplementary materials

Figure S1



**Figure S1** Genomic *adhE* locus of *C. thermocellum* and proteomic analysis of strain M1354 and strain LL1111 ( $\Delta adhE$ ). (A) Schematic representation of the *adhE* locus in *C. thermocellum* and their corresponding gene numbers. (B) Proteomic analysis of cell free extracts from M1354 and strain LL1111. Abundance of proteins encoded in the *adhE* locus was determined using mass spectrometry. There was a >90% reduction in spectral counts associated with *adhE*. Spectral counts suggest that the deletion of *adhE* did not induce dramatic polar effects on other genes, as counts associated with those genes were within 15% between strains.

Figure S2

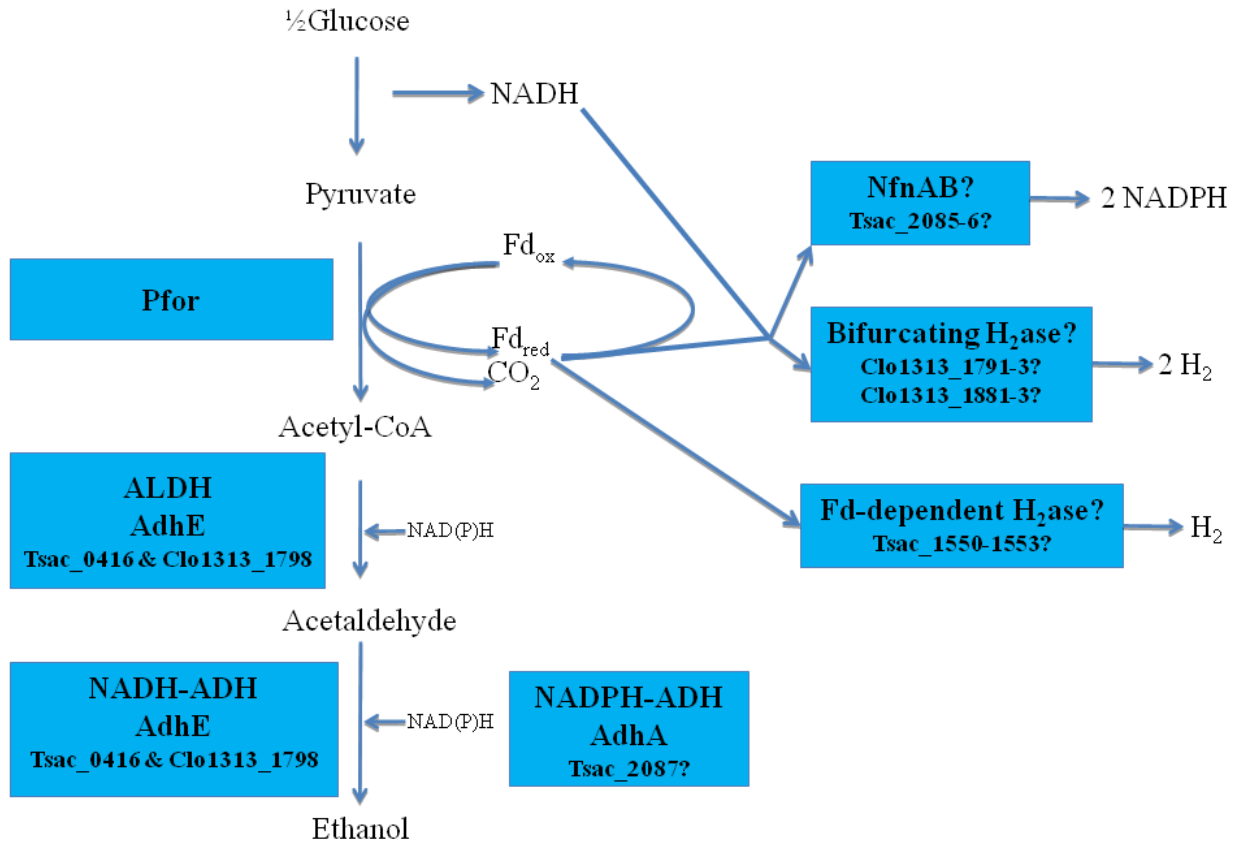


Figure S2 Schematic of selected genes and reactions potentially involved with electron metabolism in *C. thermocellum* and *T. saccharolyticum*.