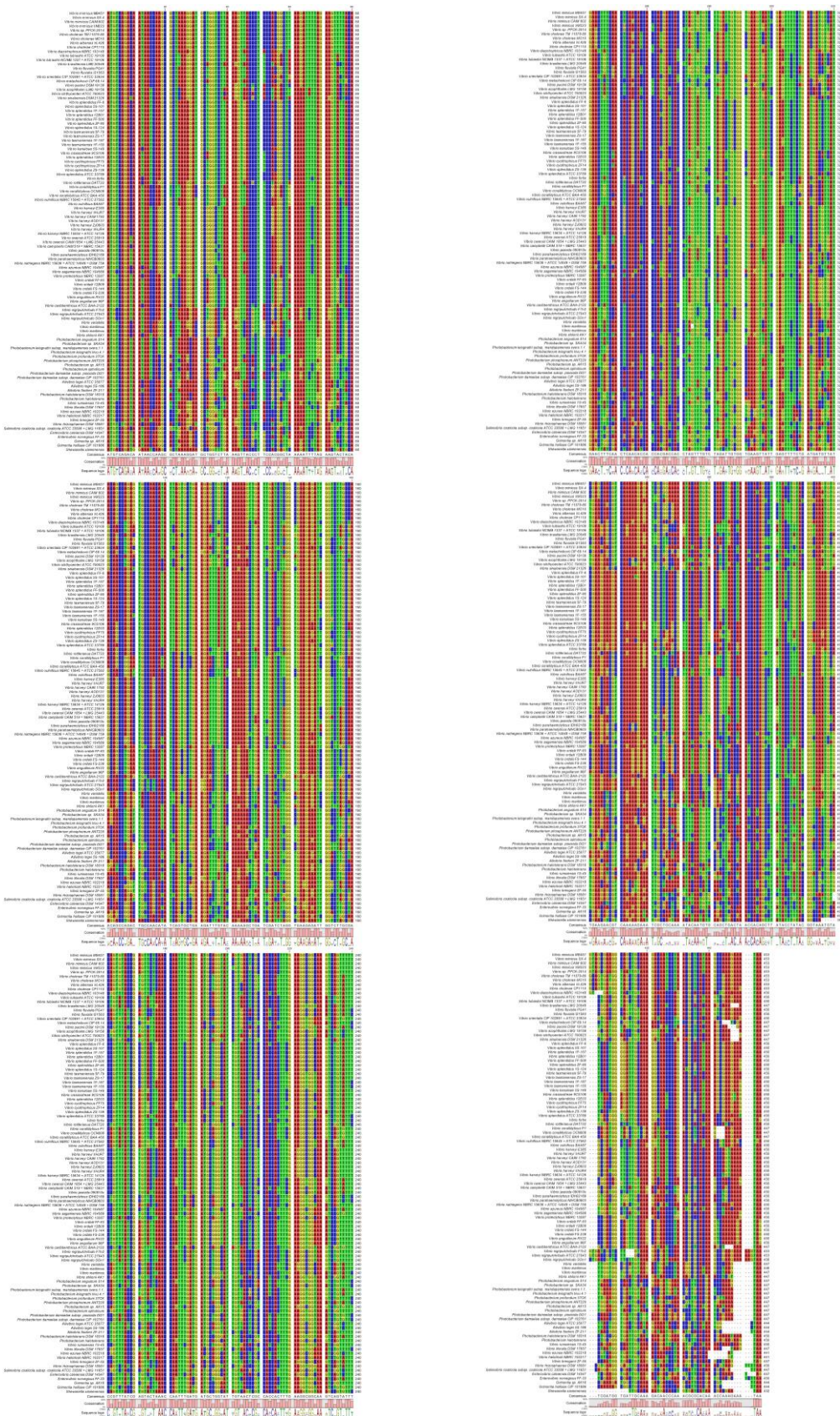


Figure S1 – Alignment of the *fur* gene 103 Vibrionaceae strains. *Shewanella xiamenensis* BC01 is used as outlier.



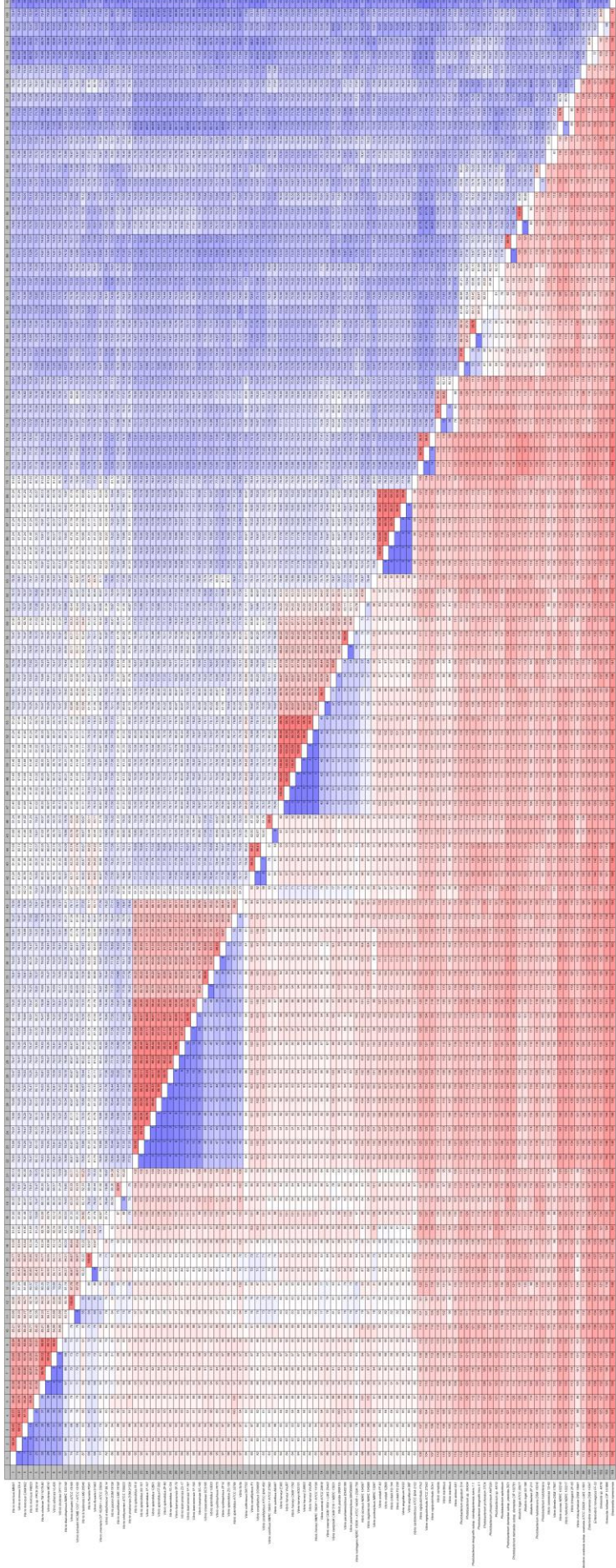


Figure S2 – Heat Map generated using the 103 strains used in the *in silico* study. From the diagonal up, the representation of the percentage of identity between the strains and from the diagonal down, the number of differences registered in the *fur* gene.