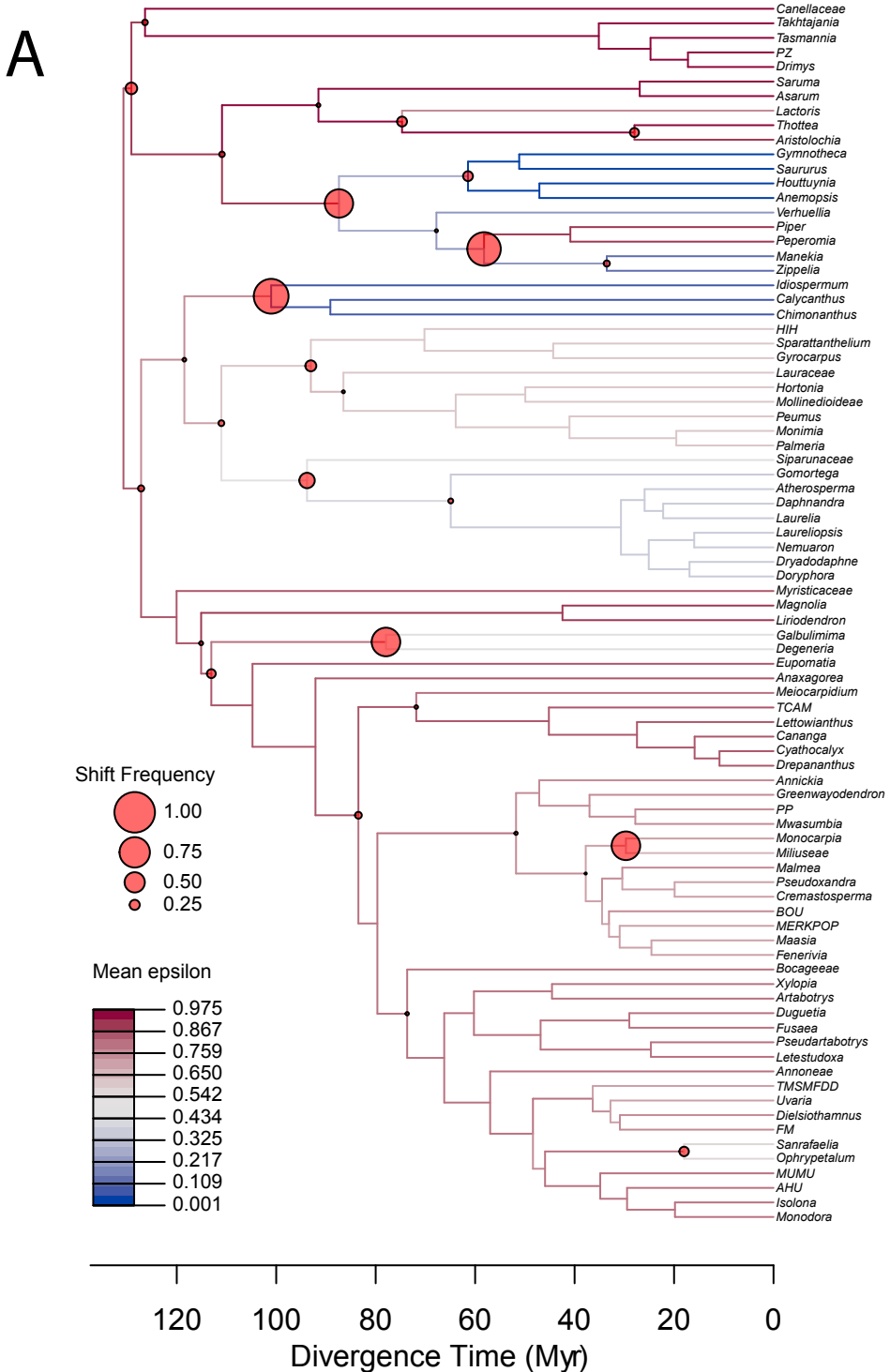


Additional file 4. Relative extinction rates. Same figure as Fig. 3, but illustrating variation in relative extinction rates. Results of the MEDUSA analyses obtained using 1000 chronograms randomly sampled from the BEAST posterior: A, angio-140, B, angio-200. The topologies are the maximum clade credibility trees of the 1000 trees used. Names of leaves refer to terminal compartments defined to conduct this analysis. Branch colors illustrate the mean relative rate of extinction (ϵ). Red dots denote significant shifts in net diversification rate (r), their size being proportional to their frequency among the 1000 trees tested. Abbreviation: Myr, million years.



B

