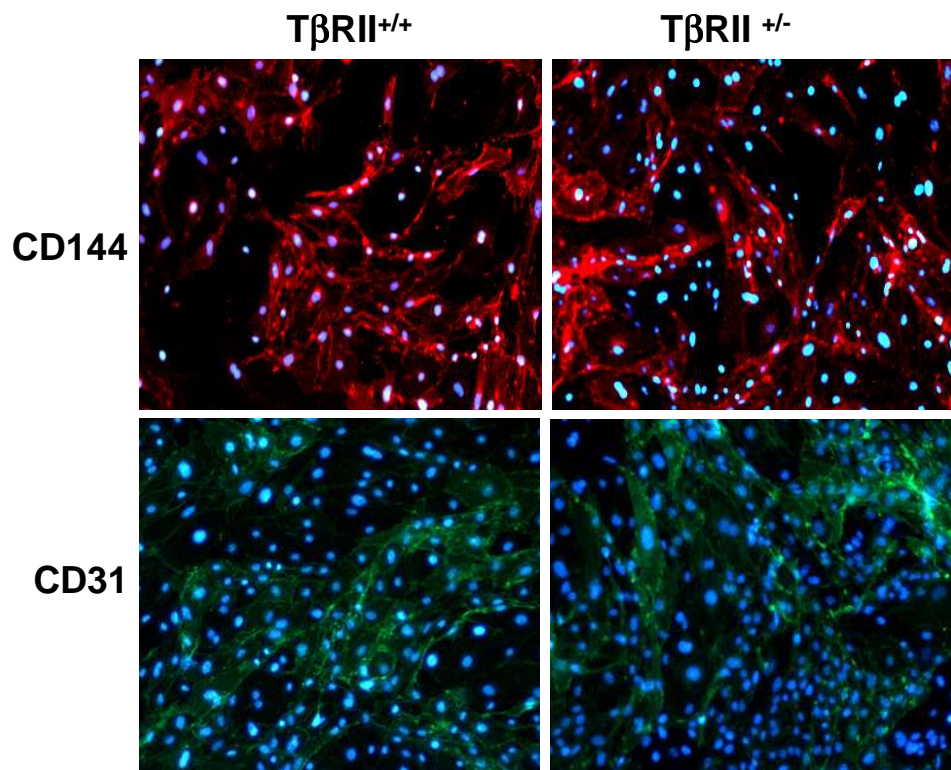
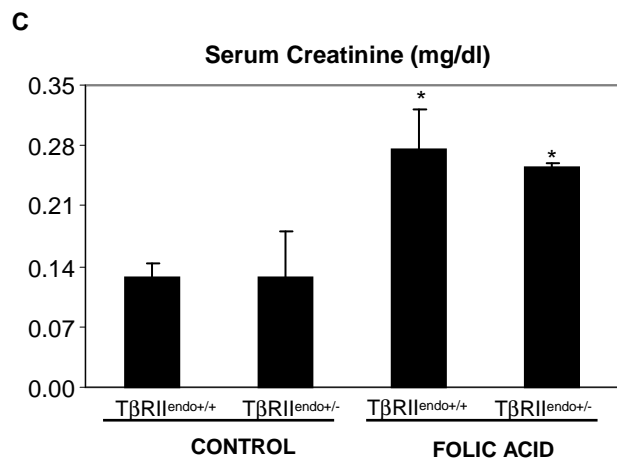
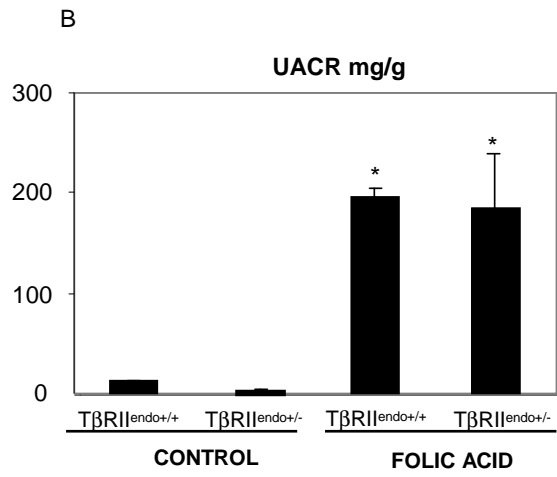
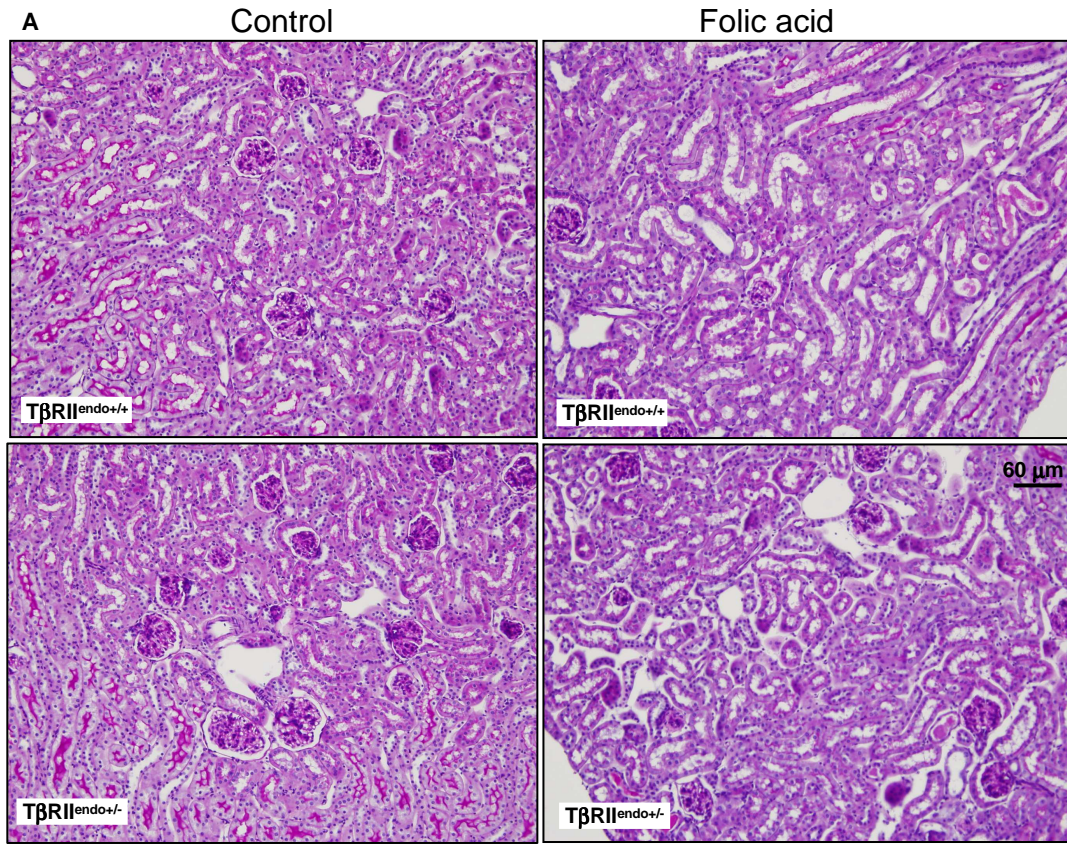


SUPPLEMENTAL FIGURE 1



SUPPLEMENTAL FIGURE 2



SUPPLEMENTAL FIGURE LEGENDS

Fig. S1. Expression of endothelial cell markers in isolated Renal ECs. Cells express EC markers CD144 (VE-Cadherin) (red), CD31 (Pecam-1) (green). The nuclei are stained with DAPI (blue). 10X magnification. Note that more than 90% of isolated cells express endothelial markers.

Fig. S2. Acute effects of nephrotoxic injury. A) Representative images of periodic acid-schiff stained kidney sections from 12 week old $T\beta RII^{endo+/+}$ and $T\beta RII^{endo+/-}$ mice treated with vehicle or FA 48 hrs after injection (n=5). 10X magnification. B) Urinary albumin creatinine ratios and C) Serum creatinine levels. * $P < 0.05$, treated $T\beta RII^{endo+/+}$ and $T\beta RII^{endo+/-}$ vs untreated $T\beta RII^{endo+/+}$ and $T\beta RII^{endo+/-}$ respectively.