

Figure S 1

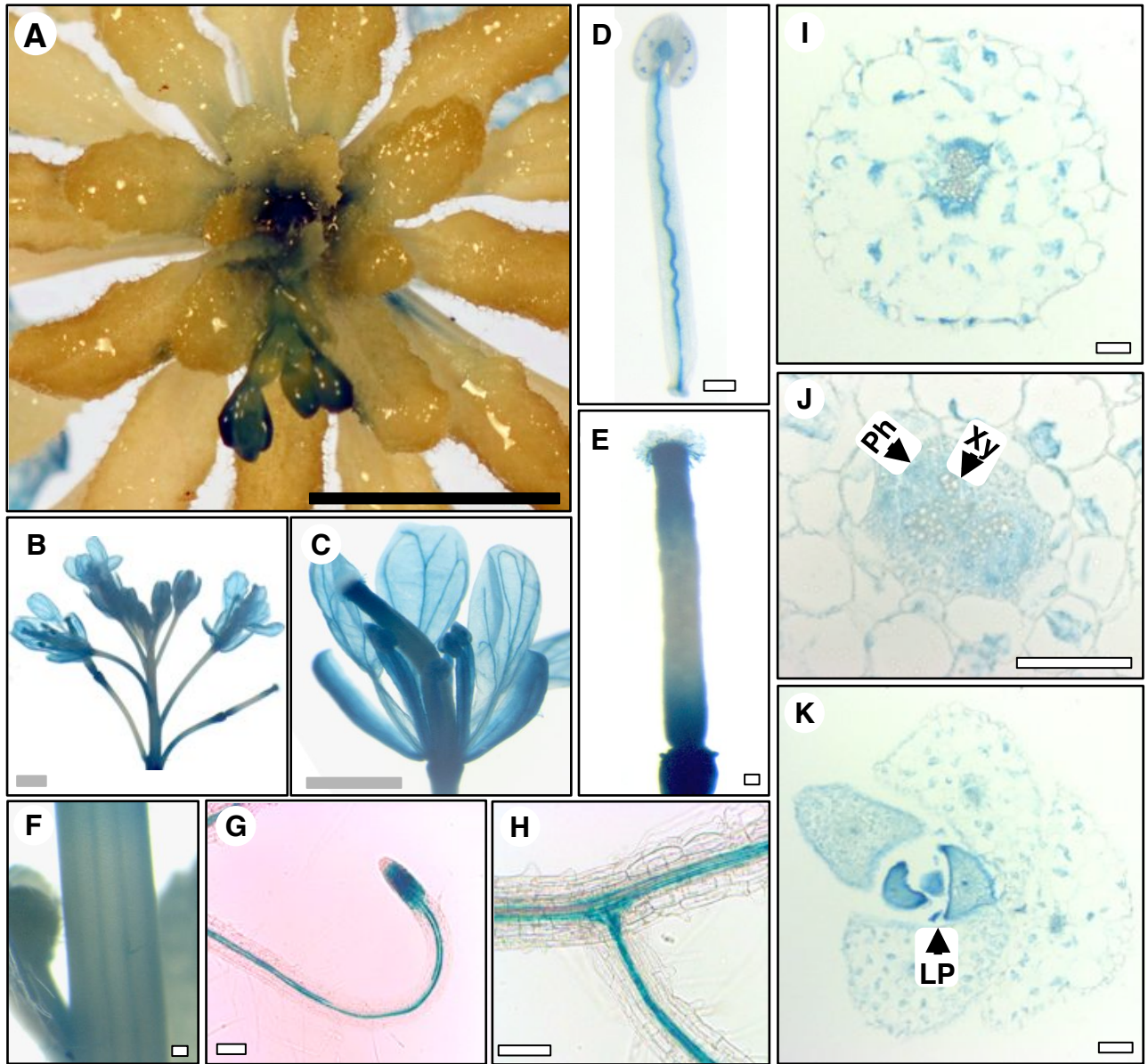


Figure S1. GUS staining patterns of an AVP1 1.7 kb promoter- β -glucuronidase reporter in Col-0 seedlings and adult plants. Typical GUS staining of adult plants (50 days old, A; 60 days old, B-F) and seedlings (15 days old, G-K) grown under 12:12 day/night regimen. A, Young inflorescence of adult plant at bolting. B, Adult inflorescence. C, Flower. D, Stamen. E, Pistil. F, Inflorescence stem. G, Root tip. H, Secondary root junction. I and J, Transversal section of hypocotyl. K, Transversal section of rosette. LP: leaf primordium, Ph: phloem, Xy: xylem. Black bars = 1 cm; gray bars: 1 mm; white bars: 0.1mm.