

Figure S4

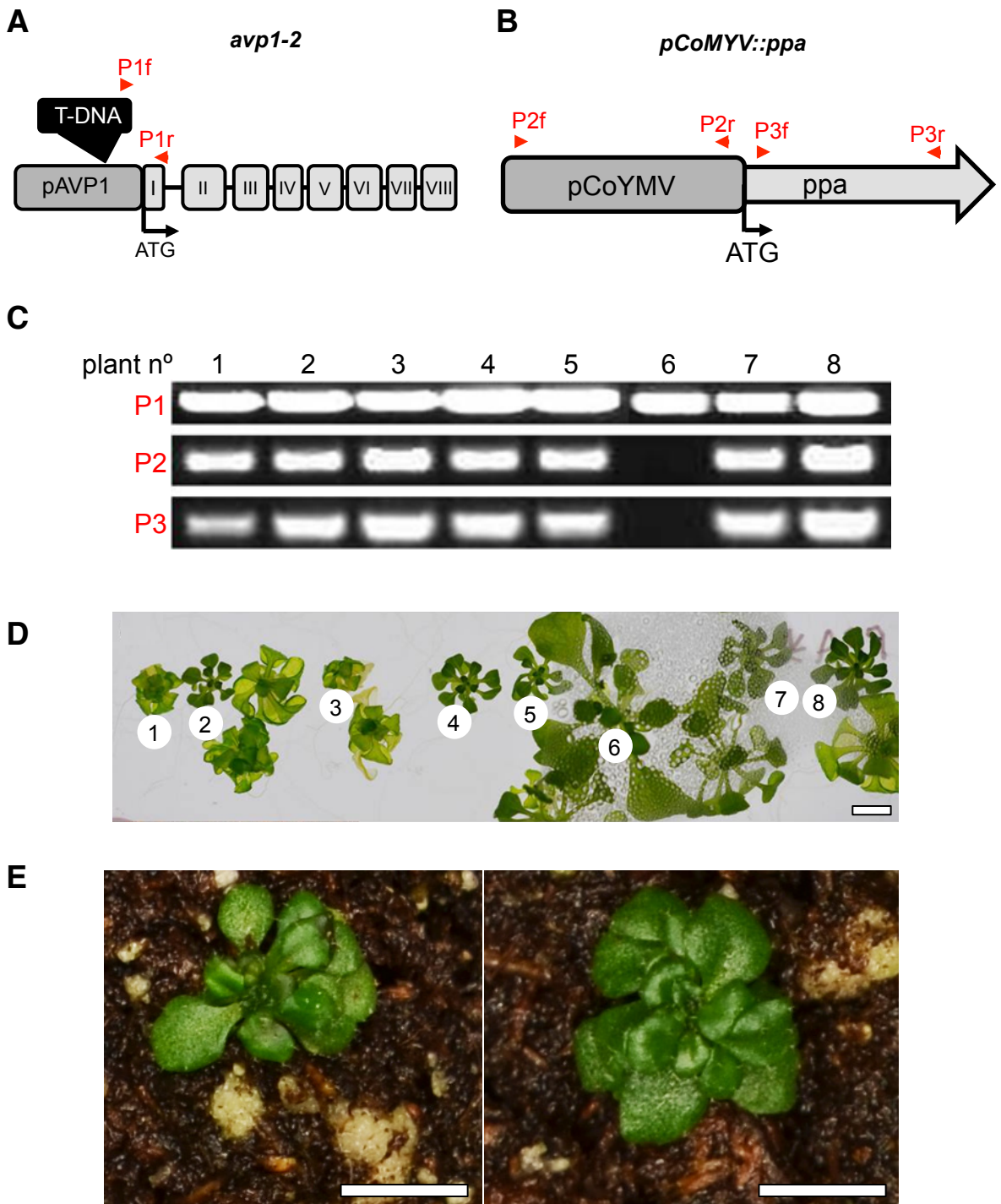


Figure S4. Genotypic confirmation of T2 *avp1-2* lines transformed with an *E. coli* soluble PPase (*ppa*) driven by a phloem specific promoter. A, and B, Primer map to confirm the promoter insertion background, and presence of the expression cassette carrying *ppa* from *E. coli*. C, PCR amplification using primer pairs depicted in (A and B). D, Phenotypes of plants represented in (C). E. Similar plants as in (D) grown in soil for 40 days. White bar: 0.5 cm.