

Figure S1

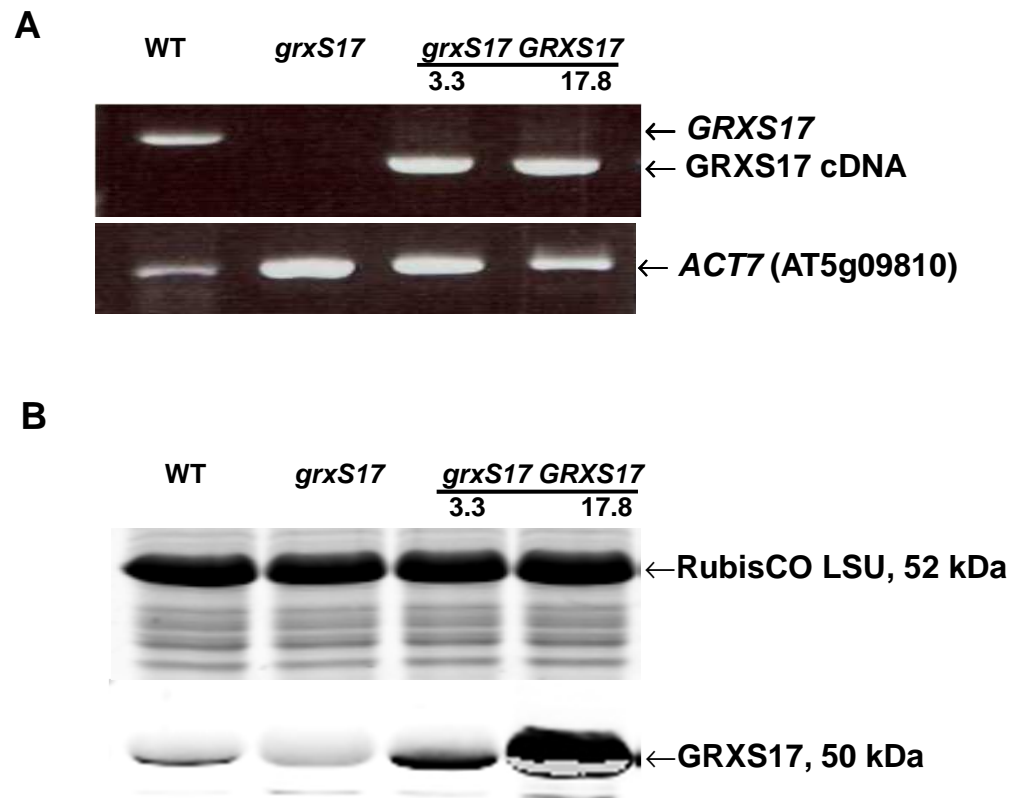


Figure S1. Molecular characterization of *A. thaliana* plants modified in *GRXS17* expression and *GRXS17* protein abundance.

(A) PCR analysis of *GRXS17* gene and *GRXS17* cDNA in the genomic DNA of WT plants, of SALK_021301 T-DNA homozygous plants (*grxS17*) and of two independent lines of T-DNA plants expressing the *GRXS17* cDNA under the control of the cauliflower mosaic virus 35S promoter (*grxS17 GRXS17* 3.3 and 17.8). (B) Western blot analysis of *GRXS17* abundance in leaf soluble proteins (20 µg per lane). The grey band in *grxS17* lane is attributed to a non-specific signal from the large RubisCO subunit which has almost the same size as *GRXS17*.