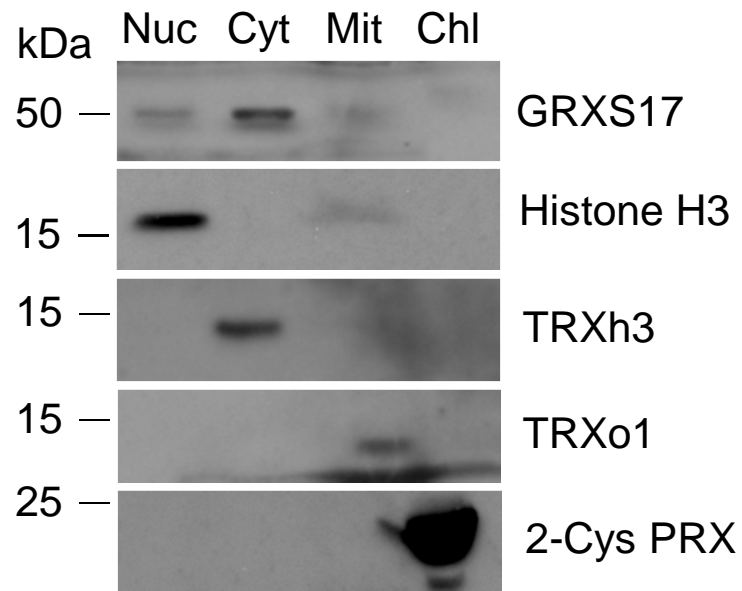


Figure S2



**Figure S2. Subcellular localization of GRXS17.**

Immunodetection of GRXS17, nuclear histone H3, cytosolic thioredoxin h3 (TRXh3), mitochondrial thioredoxin o1 (TRXo1) and plastidial 2-Cys peroxiredoxin (2-Cys PRX) in nuclear (Nuc), cytosolic (Cyt), mitochondrial (Mit) and chloroplastic (Chl) fractions prepared from Arabidopsis plants. The faint histone H3 band detected in mitochondrial fraction probably indicates a slight contamination from nuclei.