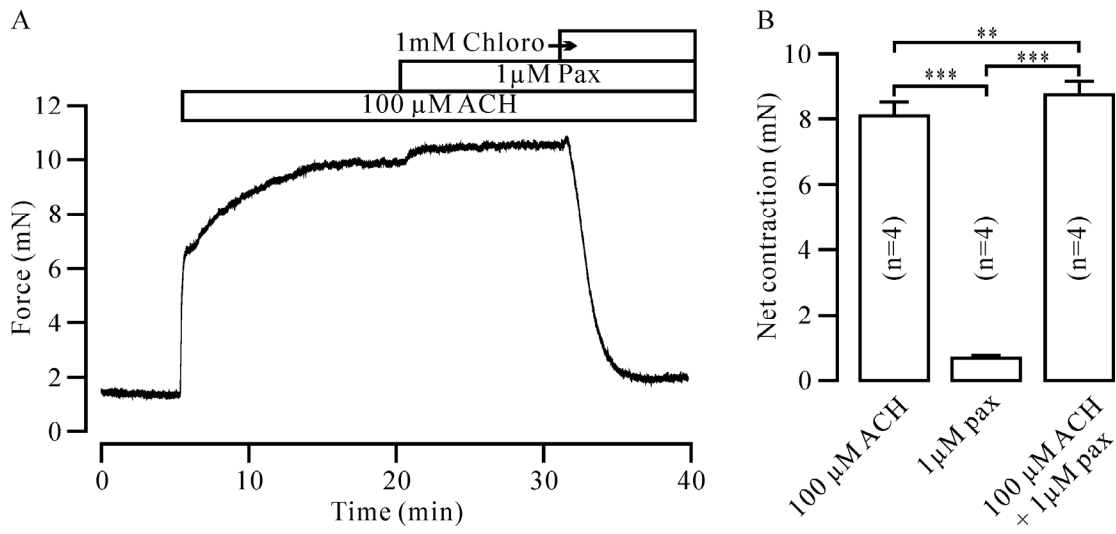


**Figure S8.**



**Figure S8. Pax induces contraction.** (A) Following ACH-induced contraction reached a plateau, pax added and resulted in an additional contraction. (B) Summarized contractions from 4 rings. This result demonstrates that blockade of BKs results in contraction in ASM. \*\*:  $p < 0.01$ ; \*\*\*:  $p < 0.001$ .