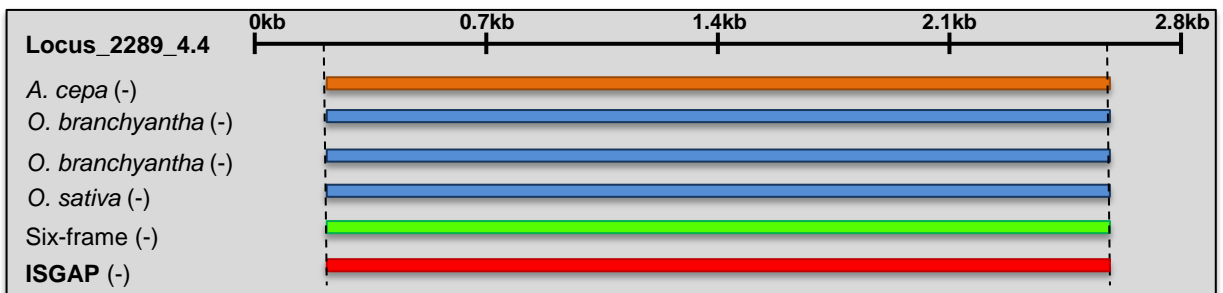
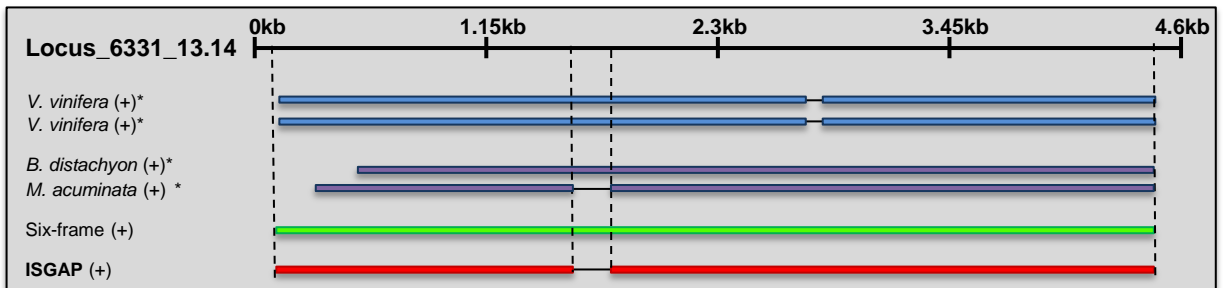


A



B



***Partial gene**

Figure S4. Differential mapped structures of public proteins in multiple or single transcript. Onion (orange bar), RefSeq plant proteins (blue bar) and evidence gene models (purple bar) were represented with gene models from ISGAP (red bar) and six-frame translated gene models (green bar). **(A)** The mapped structure of same onion and RefSeq proteins in differential transcripts. **(B)** The differentially mapped proteins in single transcript.