

**Table S1A – NeuN; mHTT at 20, 28 and 36 weeks**

Age (weeks)	Total cells	HTT(-)		HTT(+)		
		NeuN(+)	NeuN(-)	Diffuse	Perinuclear inclusion	Intranuclear inclusion
20	2211	NeuN(+)	778	957	96	297
		NeuN(-)	22	18	19	24
		%		69%	8%	23%
28	1838	NeuN(+)	341	528	50	811
		NeuN(-)	53	11	8	36
		%		37%	4%	59%
36	1518	NeuN(+)	127	174	0	1107
		NeuN(-)	58	6	0	46
		%		14%	0%	86%

**DARPP32 in 20 week brain sections**

mHT (-)/  
total cells

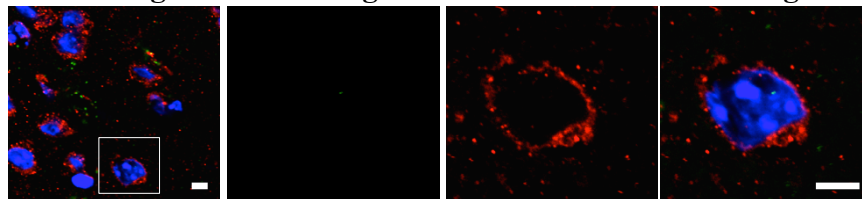
**Low Mag.**

**Huntingtin**

**DARPP32**

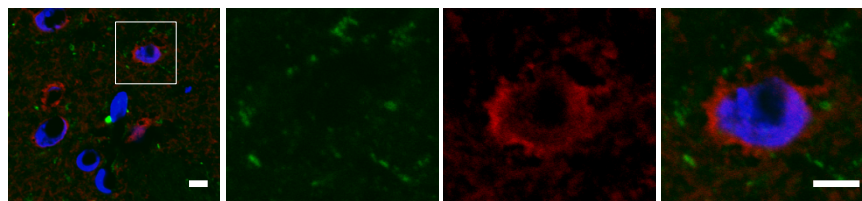
**Merge**

38%

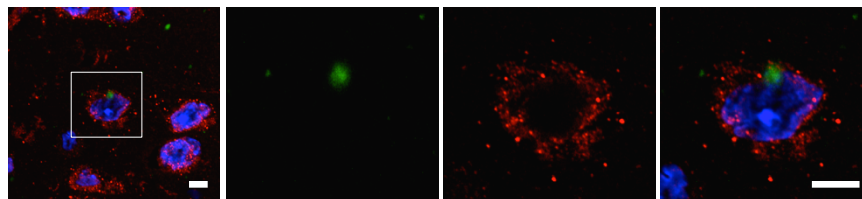


Localized mHTT  
total mHTT(+)  
cells

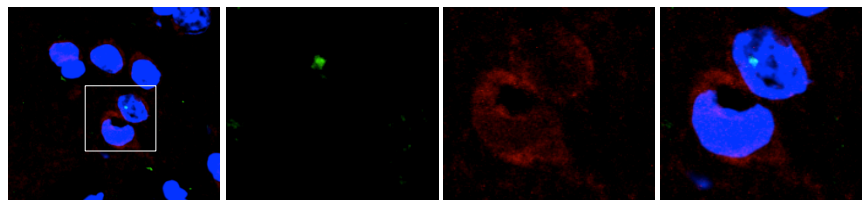
**diffuse**  
67%



**peri-  
nuclear**  
9%



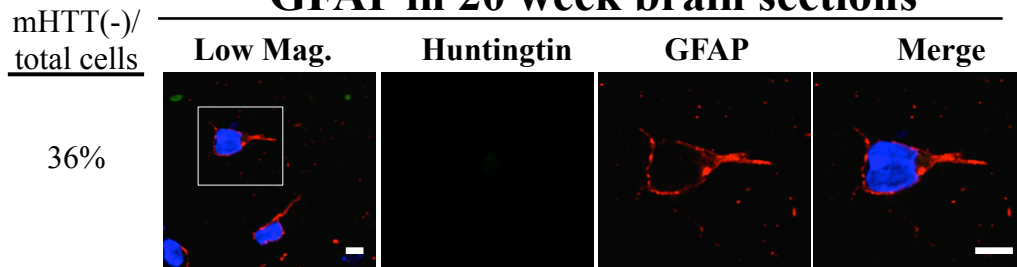
**intra-  
nuclear**  
24%



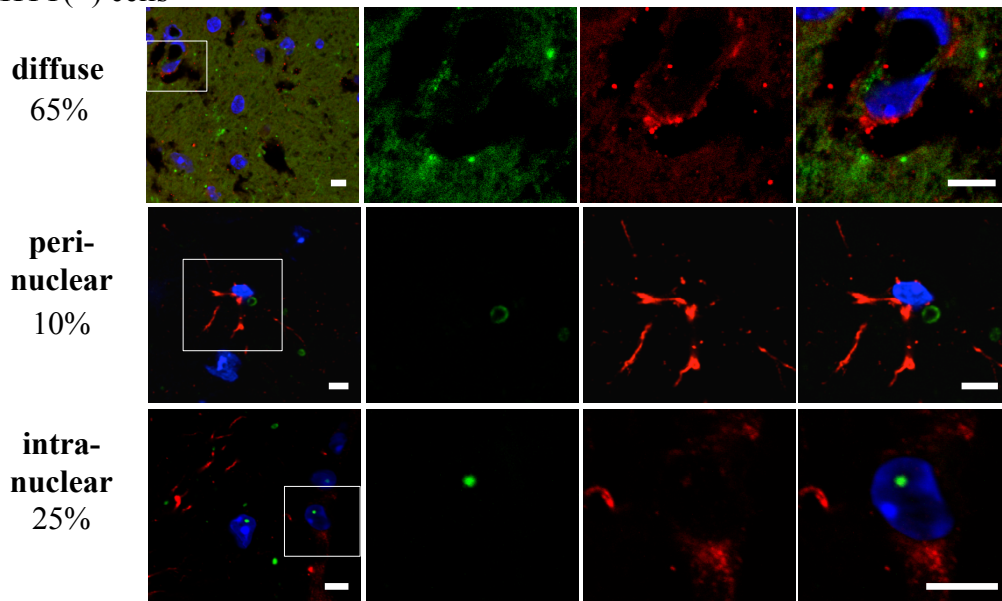
**Table S1B - DARPP32; mHTT at 20, 28 and 36 weeks**

Age (weeks)	Total cells	HTT(-)		HTT(+)		
				Diffuse	Perinuclear inclusion	Intranuclear inclusion
20	2222	DARPP32(+)	802	898	88	284
		DARPP32(-)	38	28	35	49
		%		67%	9%	24%
28	1842	DARPP32(+)	412	447	52	784
		DARPP32(-)	42	23	19	63
		%		34%	5%	61%
36	1509	DARPP32(+)	164	158	0	1053
		DARPP32(-)	37	14	0	83
		%		13%	0%	87%

**GFAP in 20 week brain sections**



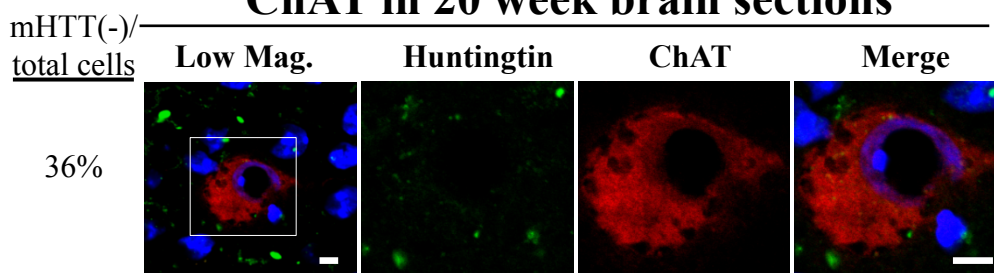
Localized mHTT  
total mHTT(+) cells



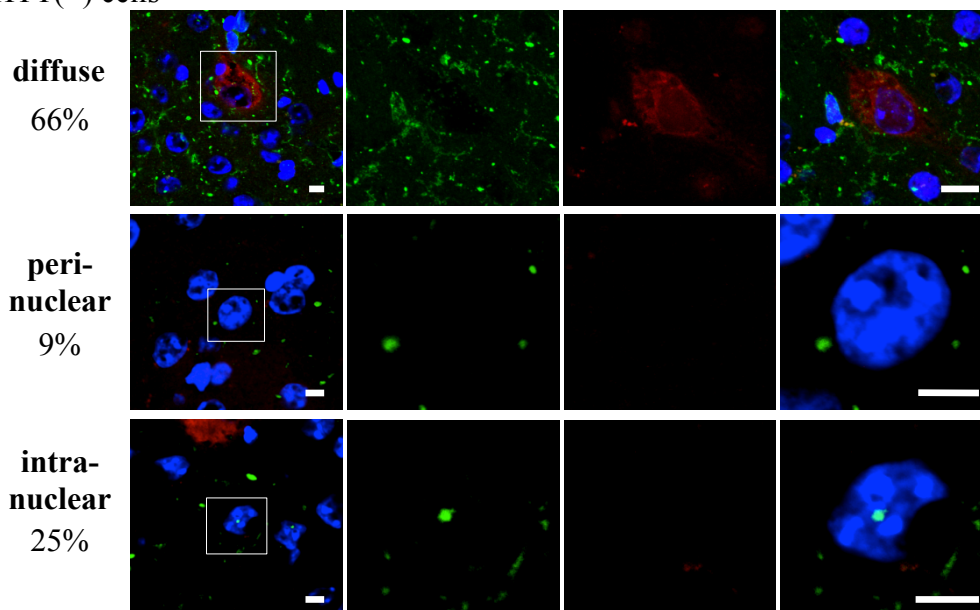
**Table S1C – GFAP; mHTT at 20, 28 and 36 weeks**

Age (weeks)	Total cells	HTT(-)		HTT(+)		
		GFAP(+)	GFAP(-)	Diffuse	Perinuclear inclusion	Intranuclear inclusion
20	2208	GFAP(+)	7	5	10	2
		GFAP(-)	796	908	127	353
		%		65%	10%	25%
28	1853	GFAP(+)	14	9	8	7
		GFAP(-)	363	486	70	896
		%		34%	5%	61%
36	1495	GFAP(+)	18	12	0	14
		GFAP(-)	115	111	0	1225
		%		9%	0%	91%

**ChAT in 20 week brain sections**



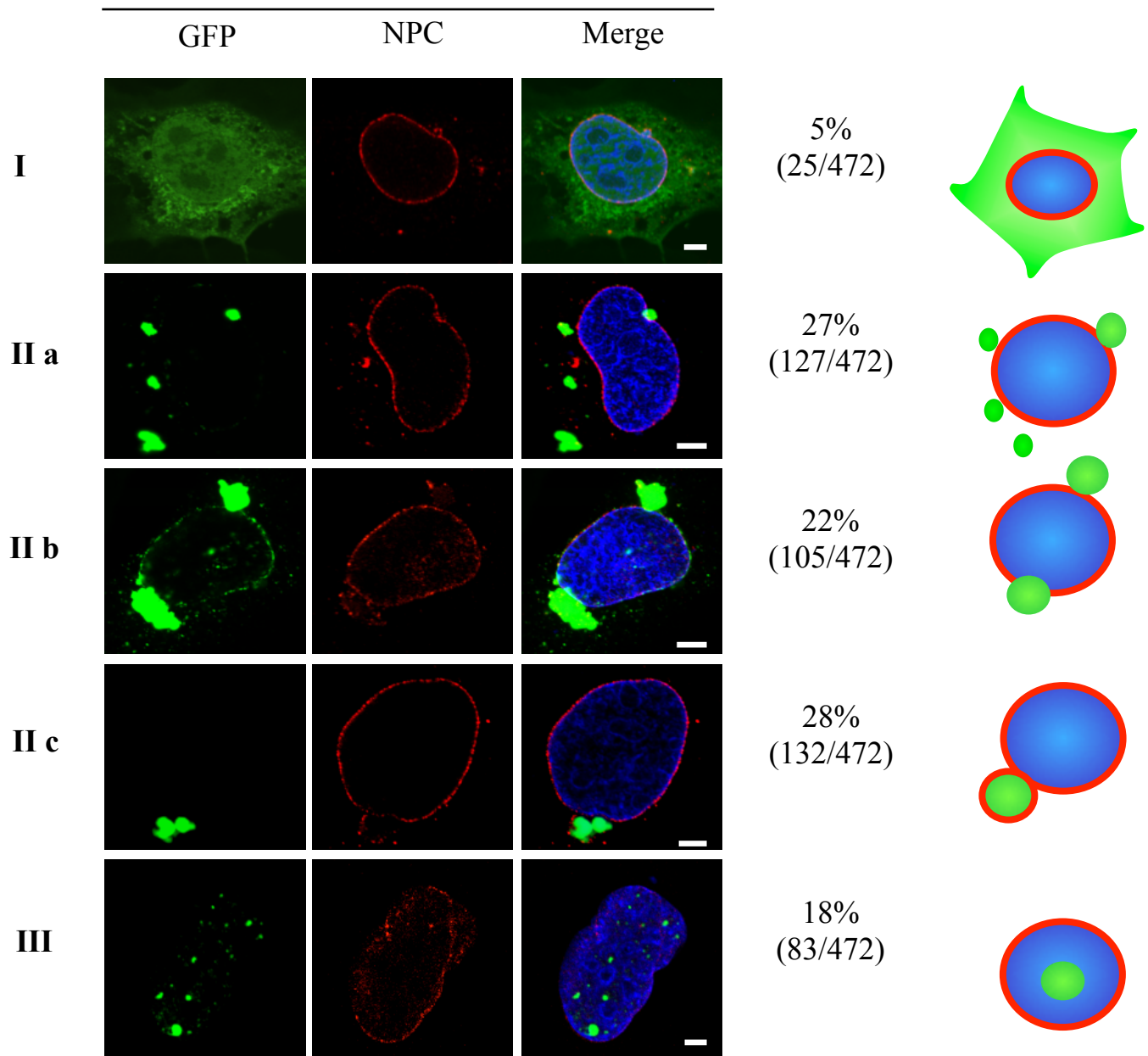
Localized mHTT  
total mHTT(+) cells



**Table S1D – ChAT; mHTT at 20, 28 and 36 weeks**

Age (weeks)	Total cells	HTT(-)		HTT(+)		
		ChAT(+)	ChAT(-)	Diffuse	Perinuclear inclusion	Intranuclear inclusion
20	2206	ChAT(+)	21	30	0	0
		ChAT(-)	779	899	119	358
		%		66%	9%	25%
28	1840	ChAT(+)	24	16	0	0
		ChAT(-)	358	455	79	908
		%		32%	5%	62%
36	1507	ChAT(+)	28	14	0	0
		ChAT(-)	119	126	0	1230
		%		10%	0%	90%

## ST14A (48hr)



**293T (48hr)**

