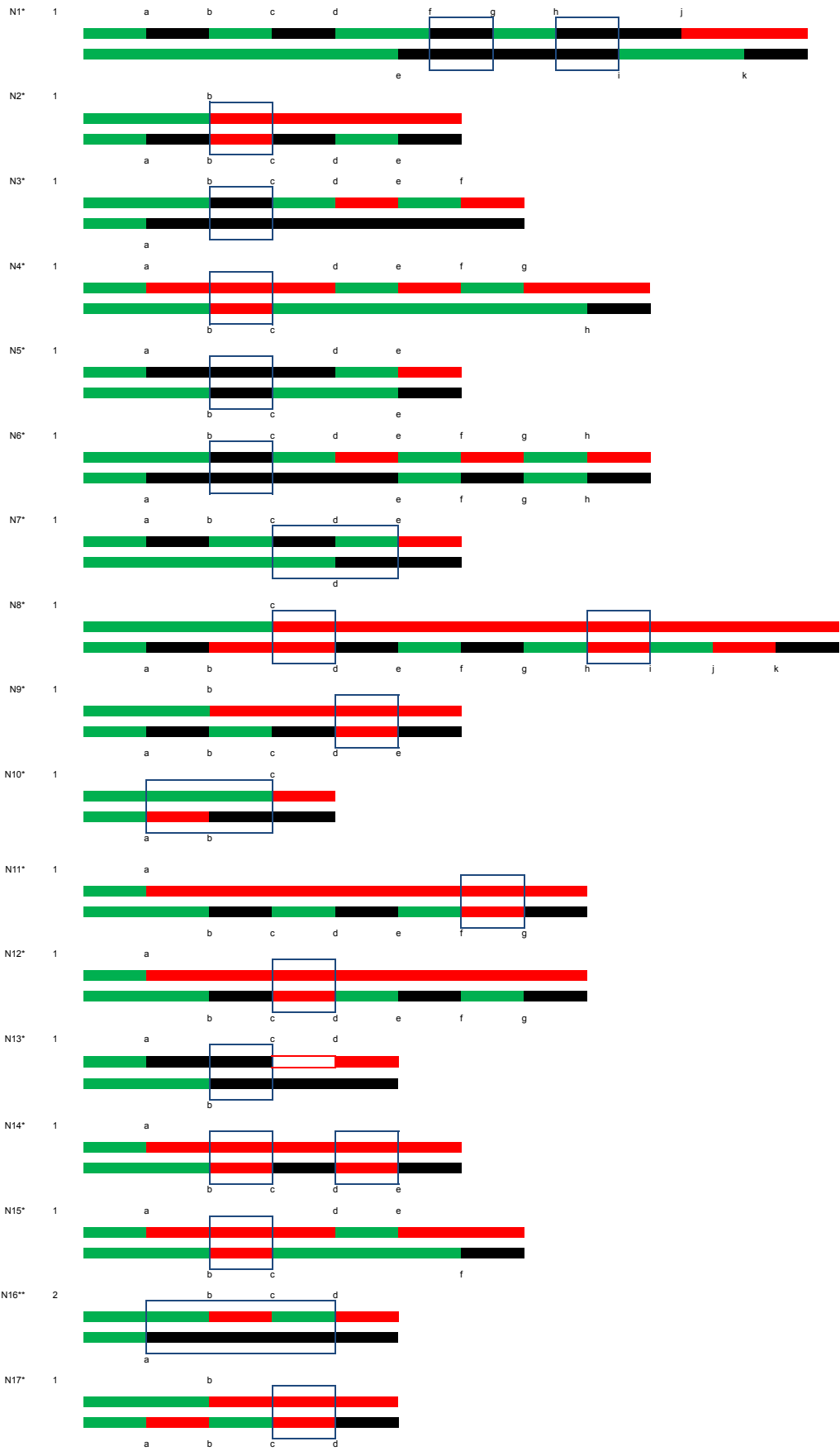
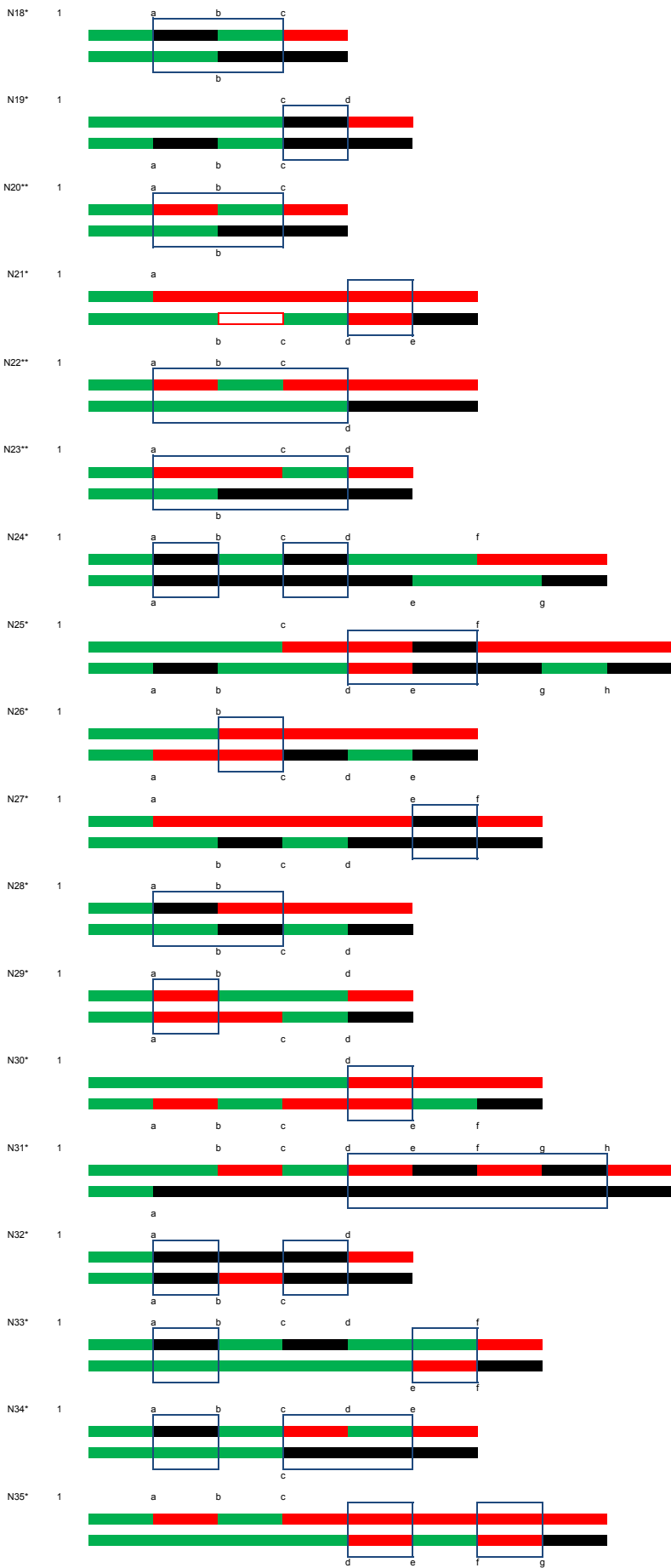


S2 Table. Conversion tracts associated with reciprocal crossovers in *top1Δ* red/white sectors

Class	Number observed	Description
A	10	Simple crossover, no conversion tract
B	23	3:1 conversion tract
B1**	11	
B2**	12	
C	2	4:0 conversion tract
C2*	2	
D	12	Simple hybrid conversion tract (4:0/3:1 or 3:1/4:0/3:1)
D1*	1	
D2*	1	
D3*	1	
D4*	1	
D5*	3	
D6*	5	
E	5	Complex conversion tracts
E2**	1	
E3*	1	
E5*	1	
E11*	1	
E26*	1	

Novel 36





\*G1-initiated DSB

\*\* G2-initiated DSB

Green, red and black represent heterozygosity for SNPs, homozygosity for W303-1A SNPs, and homozygosity for YJM789 SNPs, respectively.