

Supplementary material

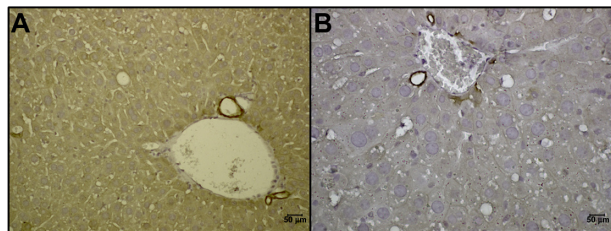


Figure S1 Keratin 18 staining in normal liver identifies sites of probable tumor origin.

Notes: Because induced mutations were restricted to cells expressing Keratin 18, immunohistochemistry was used to identify the expression of this gene. Livers were mostly negative for Keratin 18, except for bile ducts, where positive staining revealed Keratin 18 expression (**A** and **B**).

Gastrointestinal Cancer: Targets and Therapy

Publish your work in this journal

Gastrointestinal Cancer: Targets and Therapy is an international, peer-reviewed, open access journal focusing on gastro-intestinal cancer research, identification of therapeutic targets and the optimal use of preventative and integrated treatment interventions to achieve improved outcomes, enhanced survival and quality of life for the

Submit your manuscript here: <http://www.dovepress.com/gastro-intestinal-cancer-targets-and-therapy-journal>

cancer patient. The manuscript management system is completely online and includes a very quick and fair peer-review system. Visit <http://www.dovepress.com/testimonials.php> to read real quotes from published authors.

Dovepress