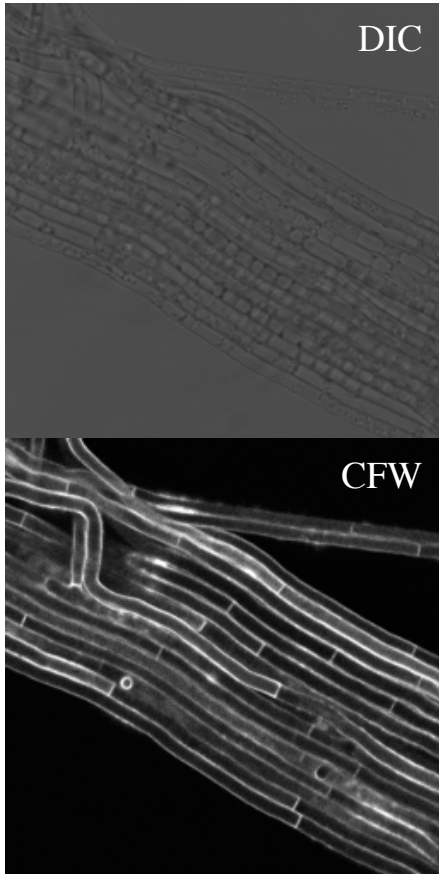
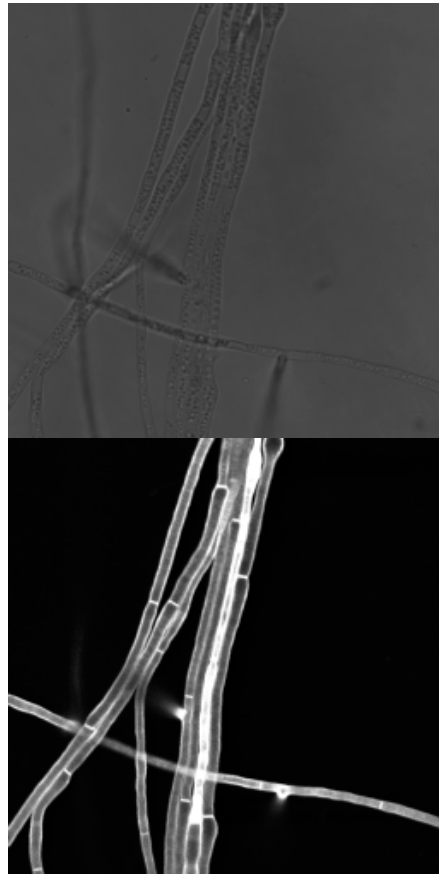


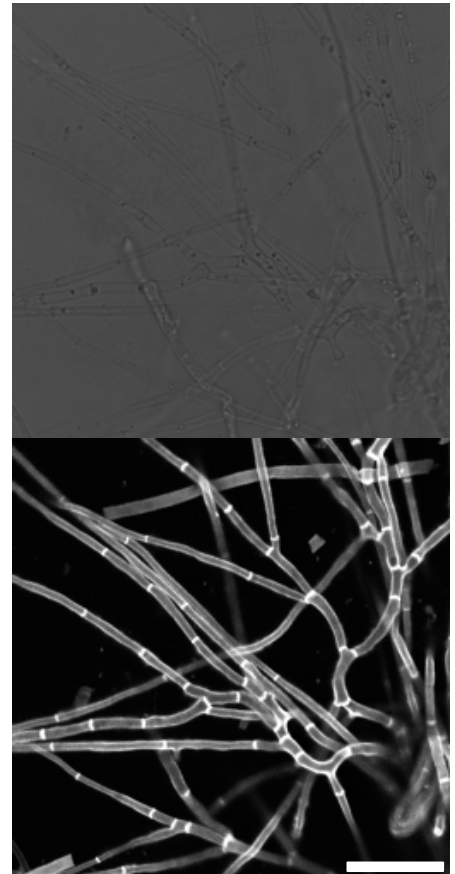
Extensive hyphal cords
(*E. amarillans* E57)



Minor hyphal cords
(*Epichloë* sp PauTG-1 e55)



No hyphal cords
(*E. festucae* E1035.33)



S2 Fig. Hyphal cord-like structures in *Epichloë* grown in culture. DIC optics and Calcofluor White (CFW) staining showing examples of hyphal cord-like structures of *Epichloë* endophytes. Bars represent 20 μ m.