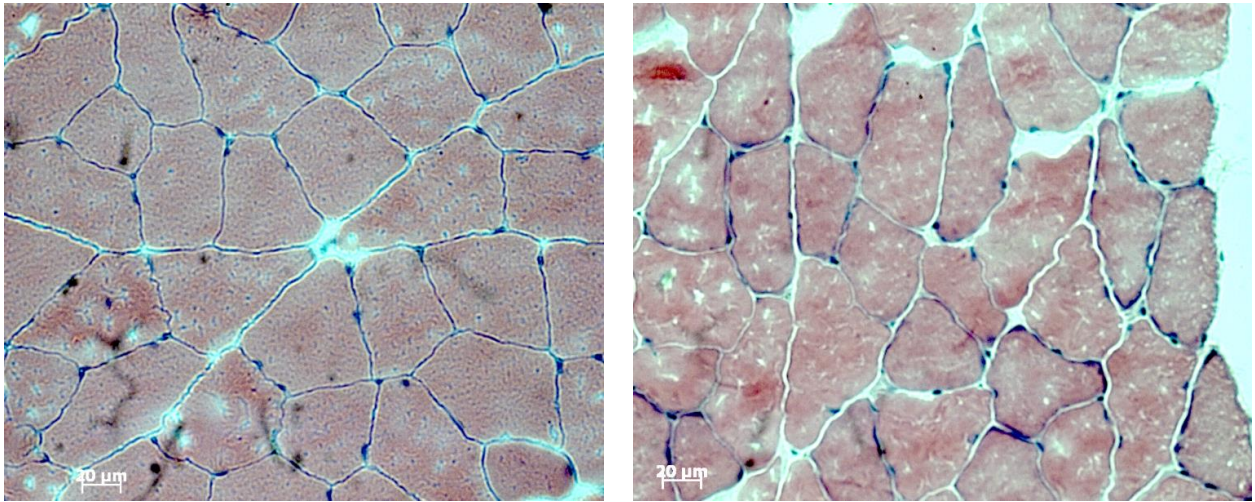
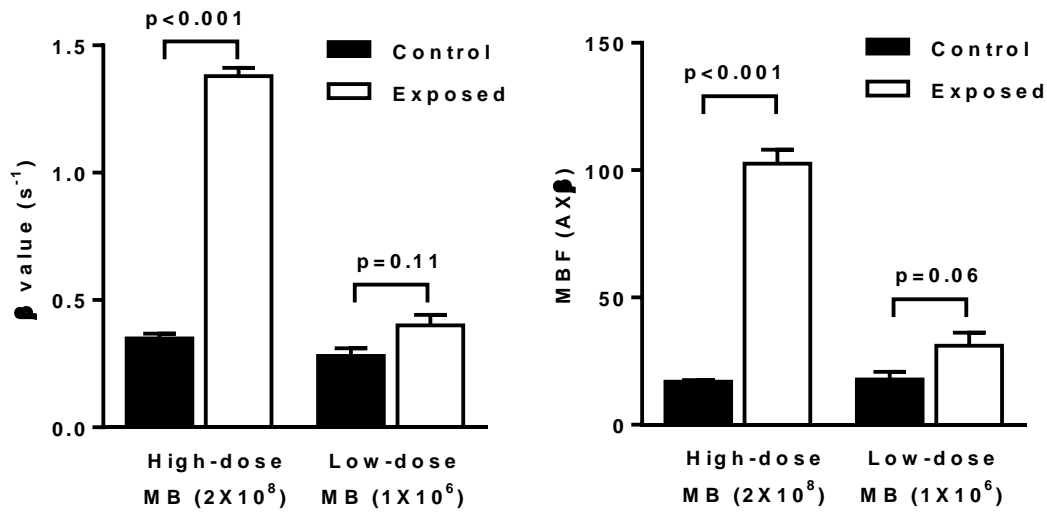


## Supplemental Figures



**Supplemental Figure 1.** Representative examples of H&E histology from the US-exposed muscle (MI of 1.3 with MB) obtained immediately after exposure (left) or at 3 days (right). No hemorrhage or inflammatory response was observed in any section.



**Supplemental Figure 2.** Mean ( $\pm$ SEM) microvascular blood flux rate ( $\beta$ ) and microvascular blood flow (MBF) for the ultrasound-exposed and contralateral control limb after high-power ultrasound (MI 1.3) and either high or low dose microbubble injection. All tests were performed using paired non-parametric tests.