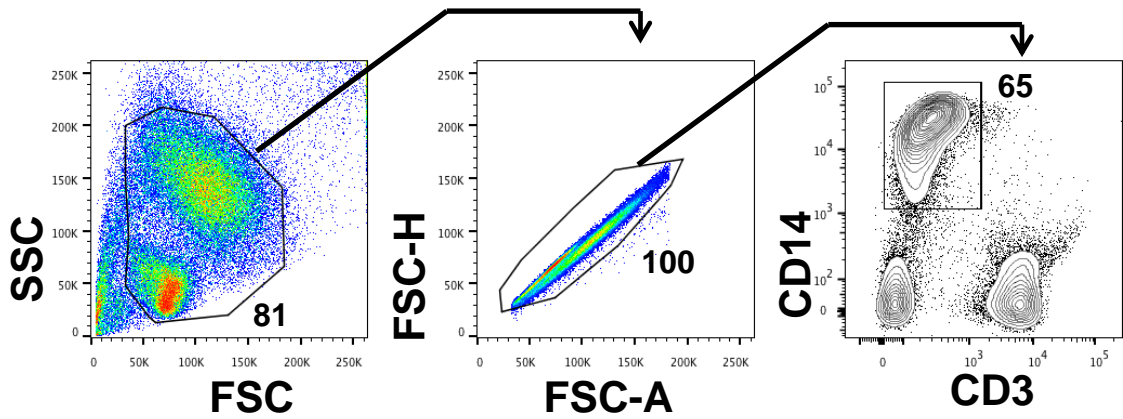


Figure S1. Optimization of anti-CD14 blocking antibody concentration in NP uptake experiments. ELISA for TNF α production by THP-1 cells following CD14 blockade at indicated doses in the presence of LPS (10 ng/ml). Iso 50, 50ug/ml isotype control. No Ab, absence of antibody. UT, untreated cells.

A. Pre-CD14 isolation



B. Post-CD14 isolation

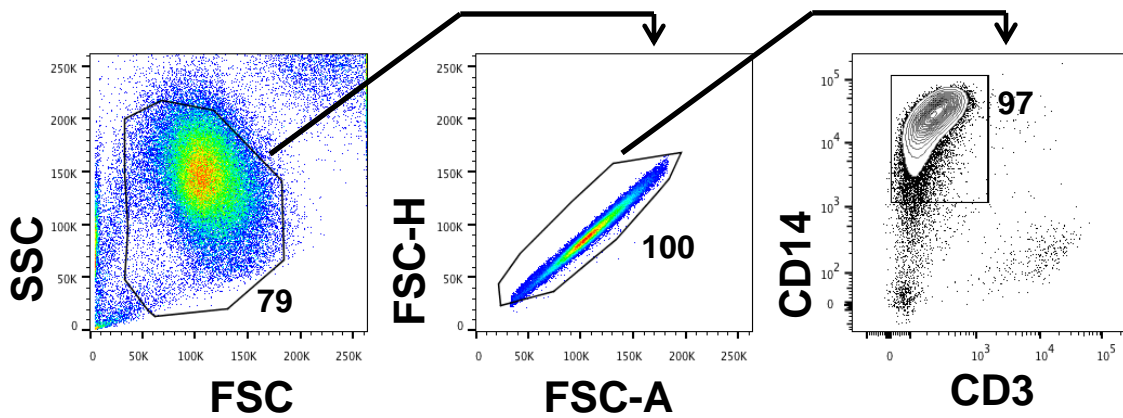


Figure S2. Purity of untouched CD14⁺ monocytes isolated from mixed buffy coat samples by magnet based negative selection. (A) Flow cytometric analysis of buffy coat cells prior to CD14⁺ cell isolation. (B) Purity of CD14⁺ cells following magnet based isolation.