

Figure S4

Lungs-TUNEL

100-200 days

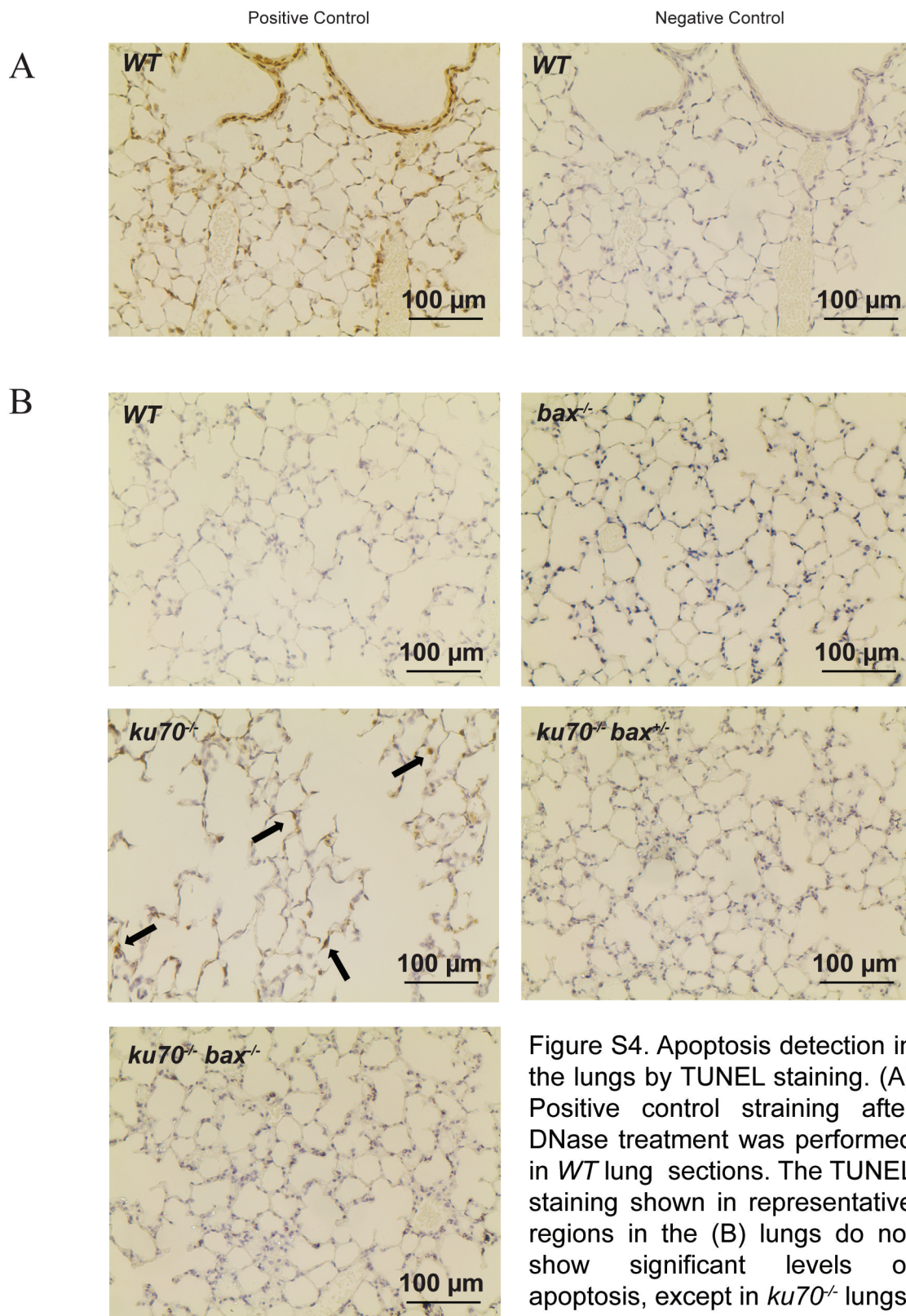


Figure S4. Apoptosis detection in the lungs by TUNEL staining. (A) Positive control staining after DNase treatment was performed in *WT* lung sections. The TUNEL staining shown in representative regions in the (B) lungs do not show significant levels of apoptosis, except in *ku70*^{-/-} lungs.