

SUPPLEMENTAL MATERIAL

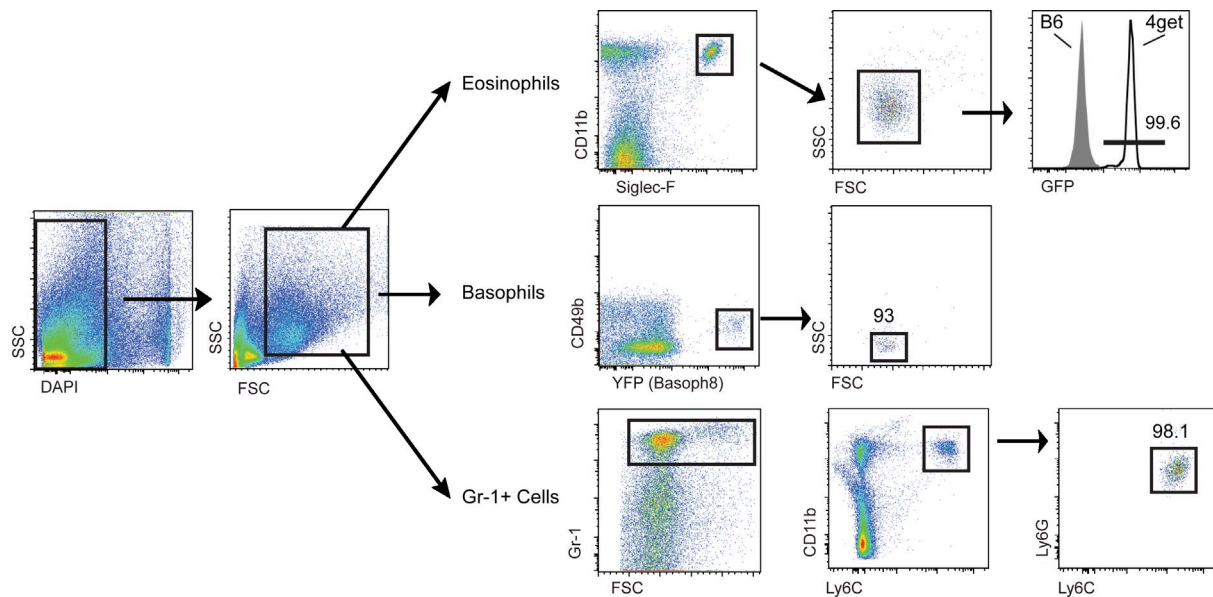
Cheng et al., <http://www.jem.org/cgi/content/full/jem.20141671/DC1>

Figure S1. Gating scheme for eosinophils ($FSC^loSSC^hiCD11b^+Siglec-F^+$), basophils ($FSC^loSSC^loCD49b^+YFP^+$), and Gr-1⁺ cells on day 3 after challenge. For eosinophils, the histograms at the right reveals uniform expression of GFP of Siglec-F⁺CD11b⁺FSC^{lo}SSC^{hi} cells when derived from 4get mice (Mohrs et al., 2001). For Gr-1⁺ cells, parallel examination of ear suspensions revealed that most all of these cells were neutrophils because Ly6C⁺ cells were also Ly6G⁺.

REFERENCE

Mohrs, M., K. Shinkai, K. Mohrs, and R.M. Locksley. 2001. Analysis of type 2 immunity in vivo with a bicistronic IL-4 reporter. *Immunity*. 15:303–311. [http://dx.doi.org/10.1016/S1074-7613\(01\)00186-8](http://dx.doi.org/10.1016/S1074-7613(01)00186-8)