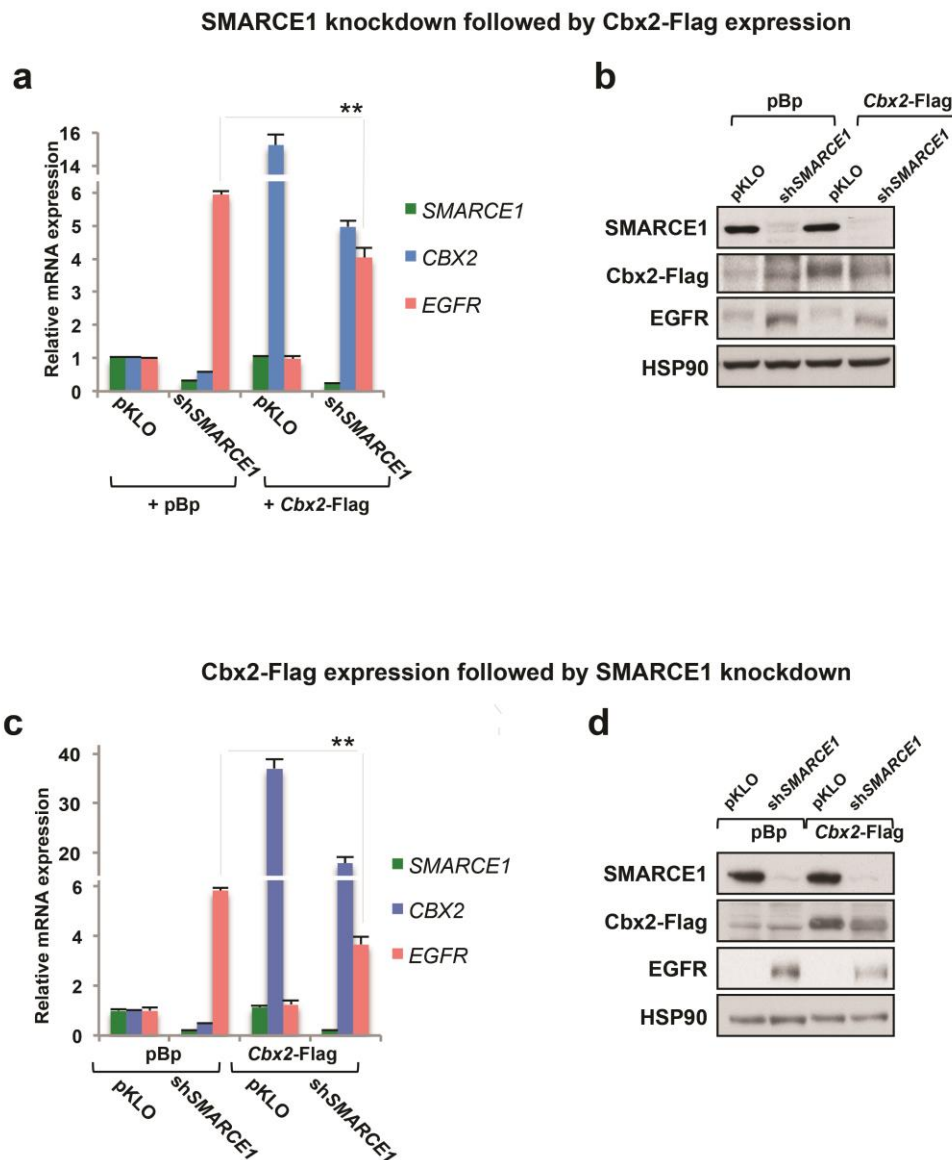


Figure S8



Supplementary information, Figure S8 Restoration of CBX2 level partially suppresses *EGFR* induction in *SMARCE1* knockdown cells.

CBX2 restoration experiments performed in different sequential orders: (A and B) H3122 cells stably expressing pLKO control or lentiviral *shSMARCE1#3* were retrovirally infected with viruses containing pBabe or Cbx2-flag cDNA; (C and D)

H3122 cells stably expressing pBabe control or pBabe Cbx2-flag cDNA were infected with either pLKO control or sh*SMARCE1*#3.

(**A** and **C**) *SMARCE1*, *CBX2* (total) and *EGFR* mRNA expression was analysed by qRT-PCR. Error bars denote SD; ** denote p values <0.01 of triplicates of representative experiments.

(**B** and **D**) Cell lysates from above (A and C) were immunoblotted for EGFR, *SMARCE1*, Cbx2-Flag and HSP90. Note that in these independent experiments, Cbx2-Flag was better detectable by western blot with a higher expression of *CBX2* total mRNA, due to the interference of background bands.