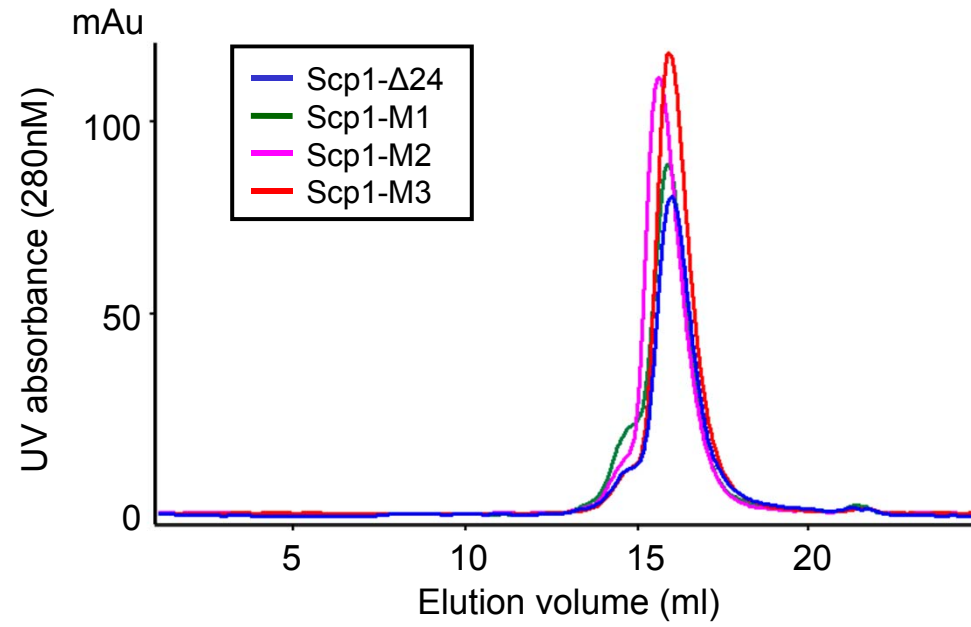


A



B

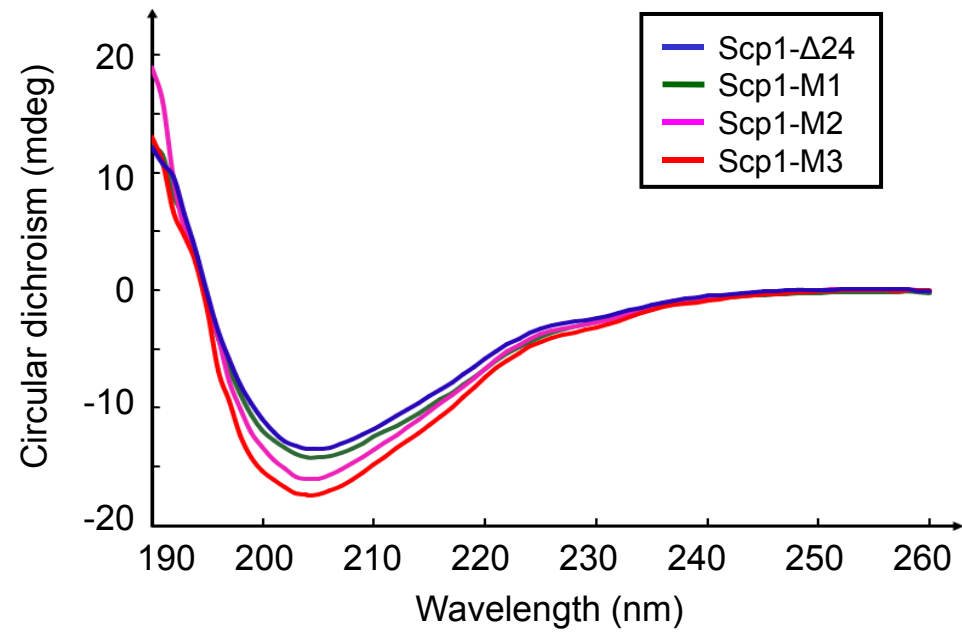


Figure S4

Supplementary information, Figure S4 The Scp1-WD40 RK patch mutants are well-folded.

(A) Size exclusion chromatography (SEC) of purified Scp1-WD40 variants

M1/M2/M3. The SEC profiles are similar between the WT Scp1- Δ 24 and the RK patch mutants (Scp1-M1: R617E; Scp1-M2: K635E/R640E/K643E; Scp1-M3:

K659E/K685E). **(B)** The secondary structural elements are nearly identical between

the WT and the RK patch mutants of Scp1-WD40. Shown here are circular dichroism

(CD) spectra of the Scp1-WD40 (Scp1- Δ 24) and the three RK patch mutants.