

Differentiation of K562 cells

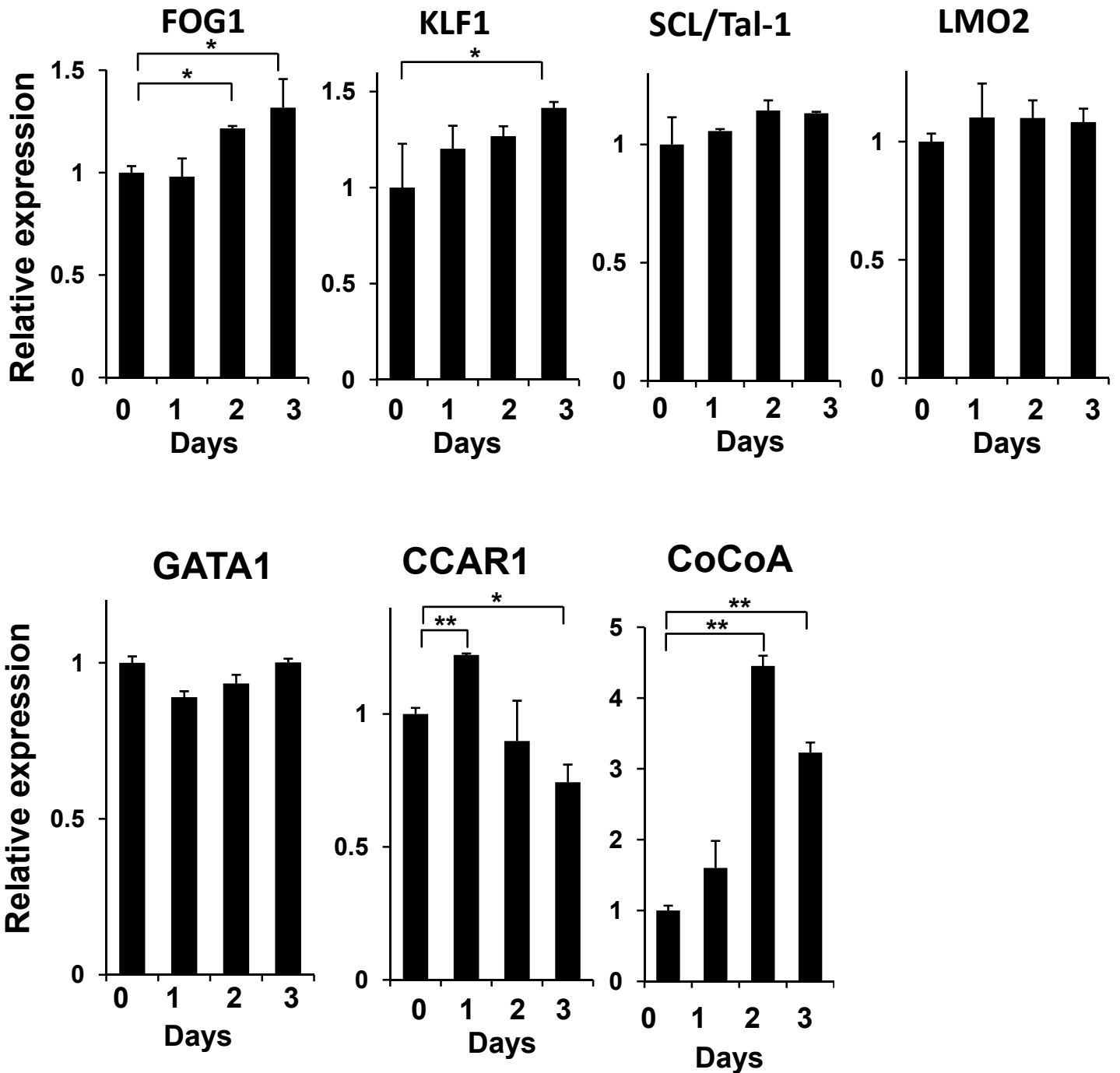


Figure S1. RT-PCR of GATA1 and GATA1-associated activators and coactivators in hemin-treated K562 cells. Values (mean \pm SD) of a representative experiment performed in triplicate are shown (* p < .05, ** p < .01).

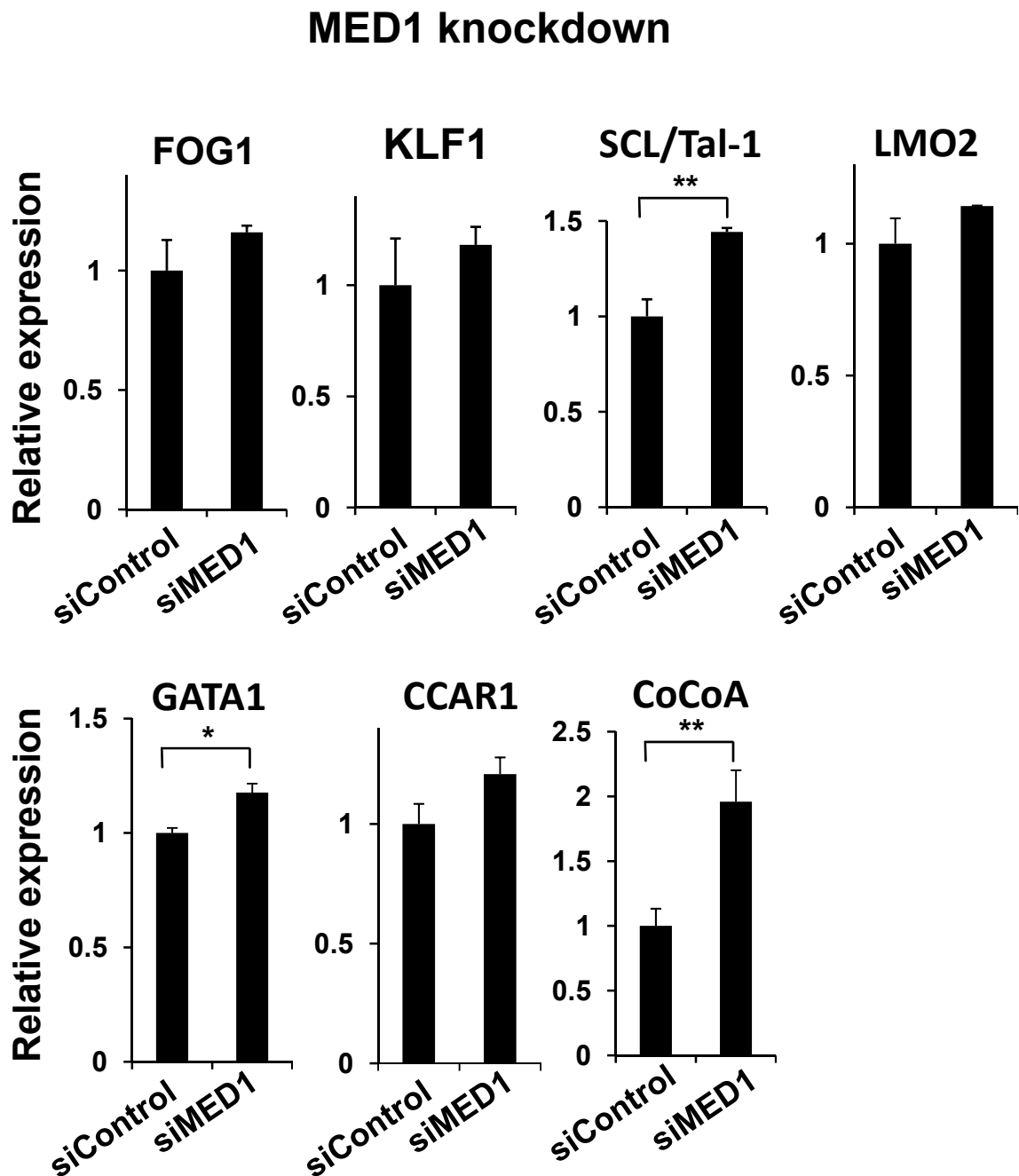


Figure S2. RT-PCR of GATA1 and GATA1-associated activators and coactivators 3 days after transfection with hMED1 or control siRNA in hemin-treated K562 cells. Values (mean \pm SD) of a representative experiment performed in triplicate are shown (* $p < .05$, ** $p < .01$).

Figure S3

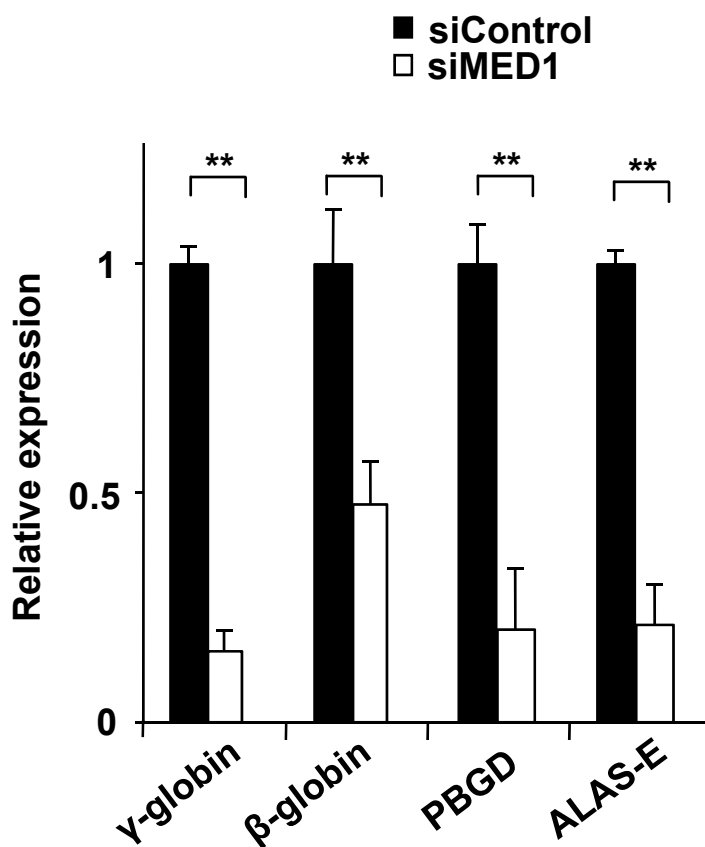


Figure S3. Reduced GATA1-targeted gene transcription 3 days after transfection with hMED1 or control siRNA in hemin-untreated K562 cells. Values (mean \pm SD) of a representative experiment performed in triplicate are shown (** $p < .01$).

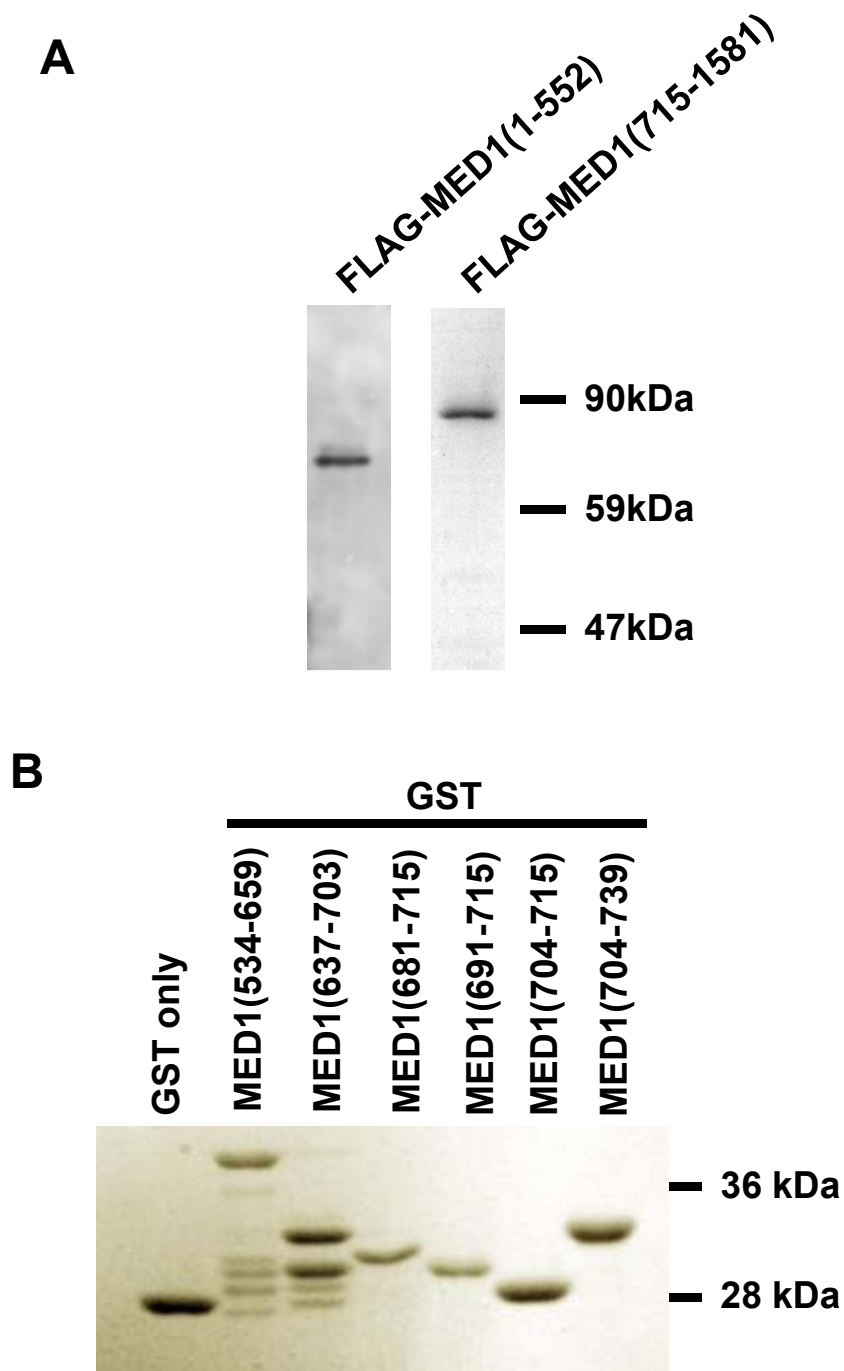


Figure S4. Recombinant proteins.

(A) Western blot analyses of baculovirus expressed FLAG-tagged MED1 truncations. Anti-FLAG antibody was used.

(B) Coomassie staining of GST and GST-fused MED1 truncations. 0.5 μ g (GST-fused MED1(534–659), MED1(681–715), MED1(691–715)) or 1 μ g (others) of proteins are shown.

Figure S5

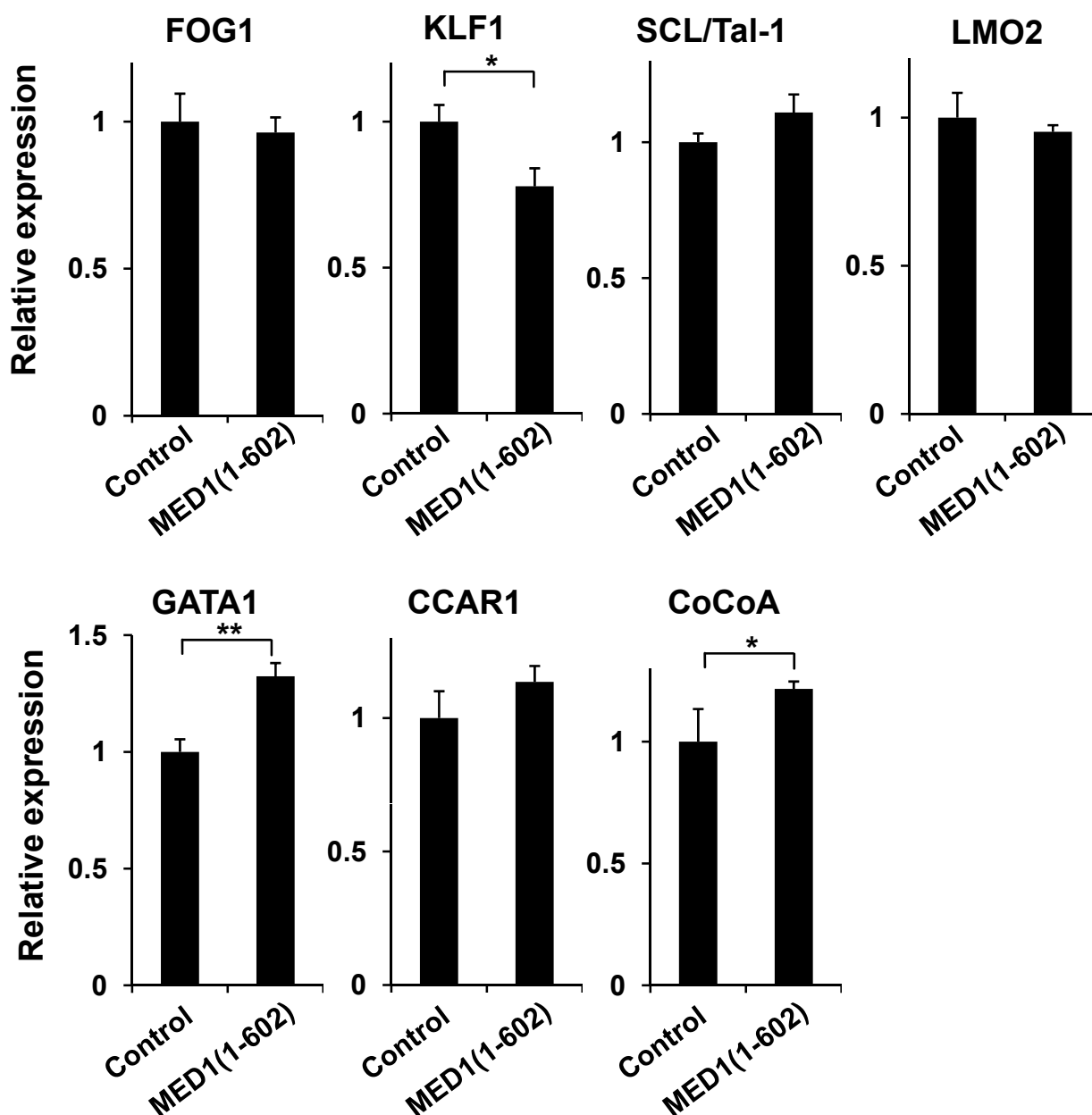


Figure S5. RT-PCR of GATA1 and GATA1-associated activators and coactivators in hemin-treated K562 cells 3 days after transfection with MED1(1-602) or control empty expression vector. Values (mean \pm SD) of a representative experiment performed in triplicate are shown (* p < .05, ** p < .01).

Figure S6

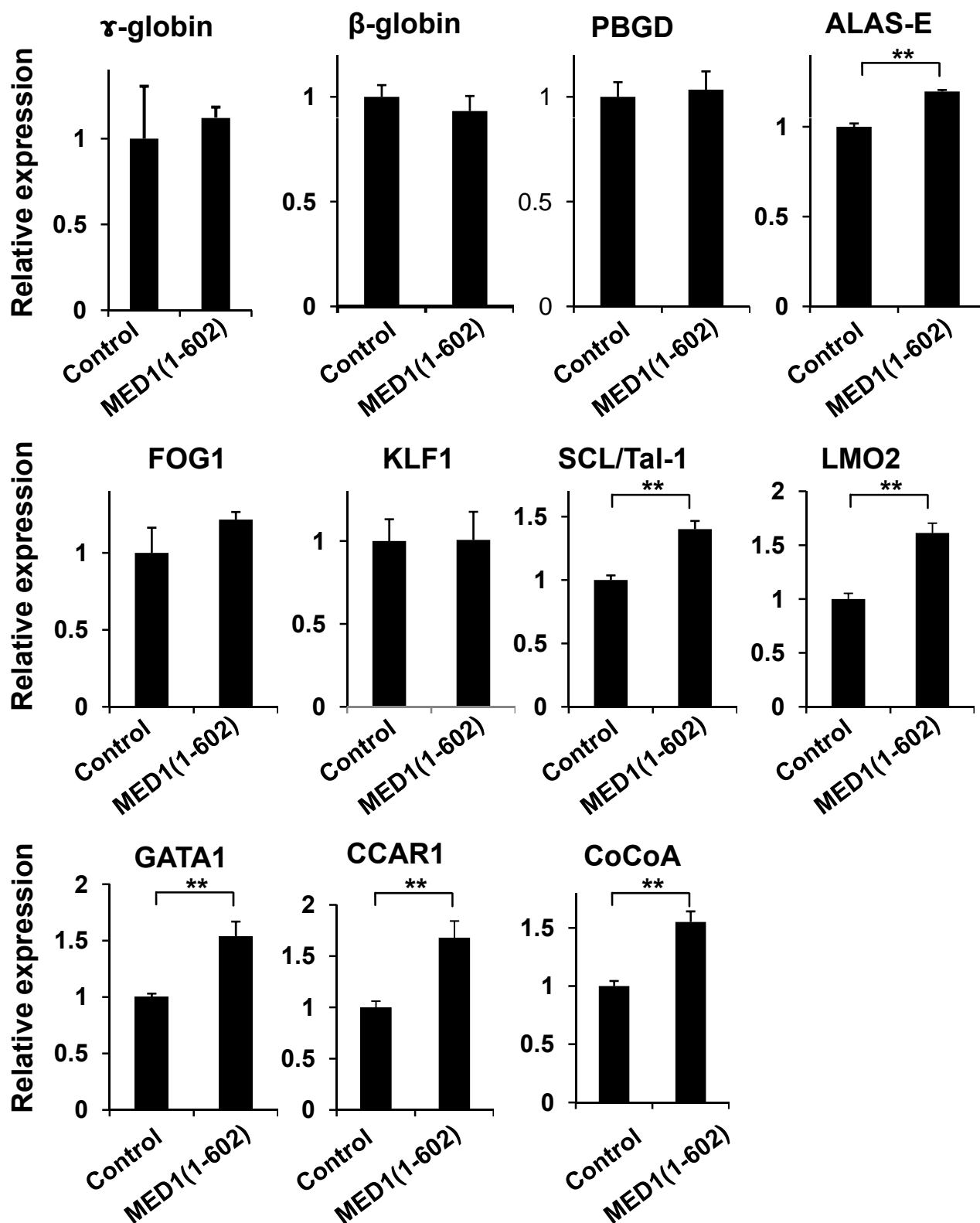


Figure S6. RT-PCR of GATA1-targeted gene products, GATA1, and GATA1-associated activators and coactivators in hemin-untreated K562 cells 3 days after transfection with MED1(1–602) or control empty expression vector. Values (mean \pm SD) of a representative experiment performed in triplicate are shown (** $p < .01$).

Figure S7

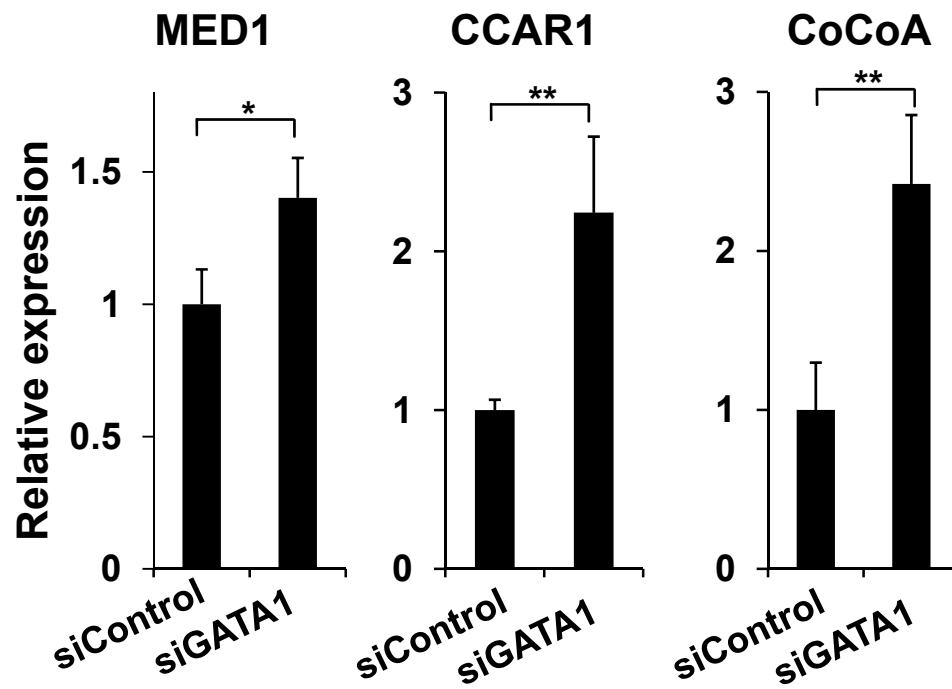


Figure S7. RT-PCR of MED1, CCAR1 and CoCoA in K562 cells 3 days after transfection with hGATA1 or control siRNA. Values (mean \pm SD) of a representative experiment performed in triplicate are shown (* p < .05, ** p < .01).

Figure S8

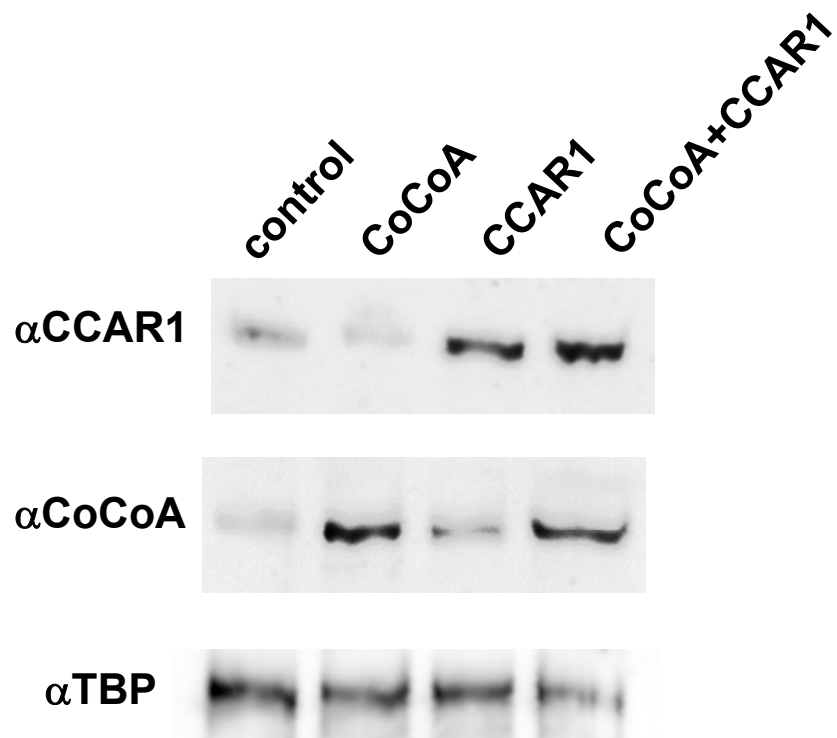


Figure S8. Western blot analyses of CCAR1 and/or CoCoA overexpression in K562 cells. Anti-CCAR1 and anti-CoCoA antibodies, and anti-TBP antibody as a control, were used.

Figure S9

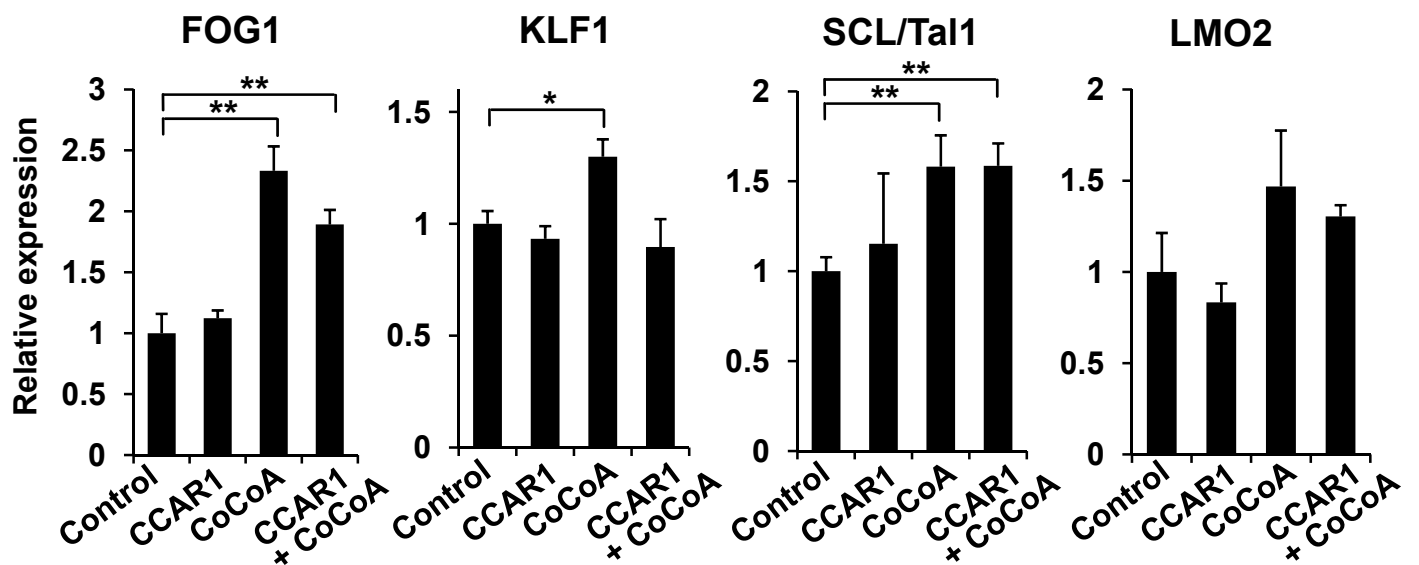


Figure S9. RT-PCR of GATA1-associated activators in hemin-treated K562 cells 3 days after transfection with CCAR1, CoCoA and/or control empty expression vectors. Values (mean \pm SD) of a representative experiment performed in triplicate are shown (* $p < .05$, ** $p < .01$).