

Figure S3.

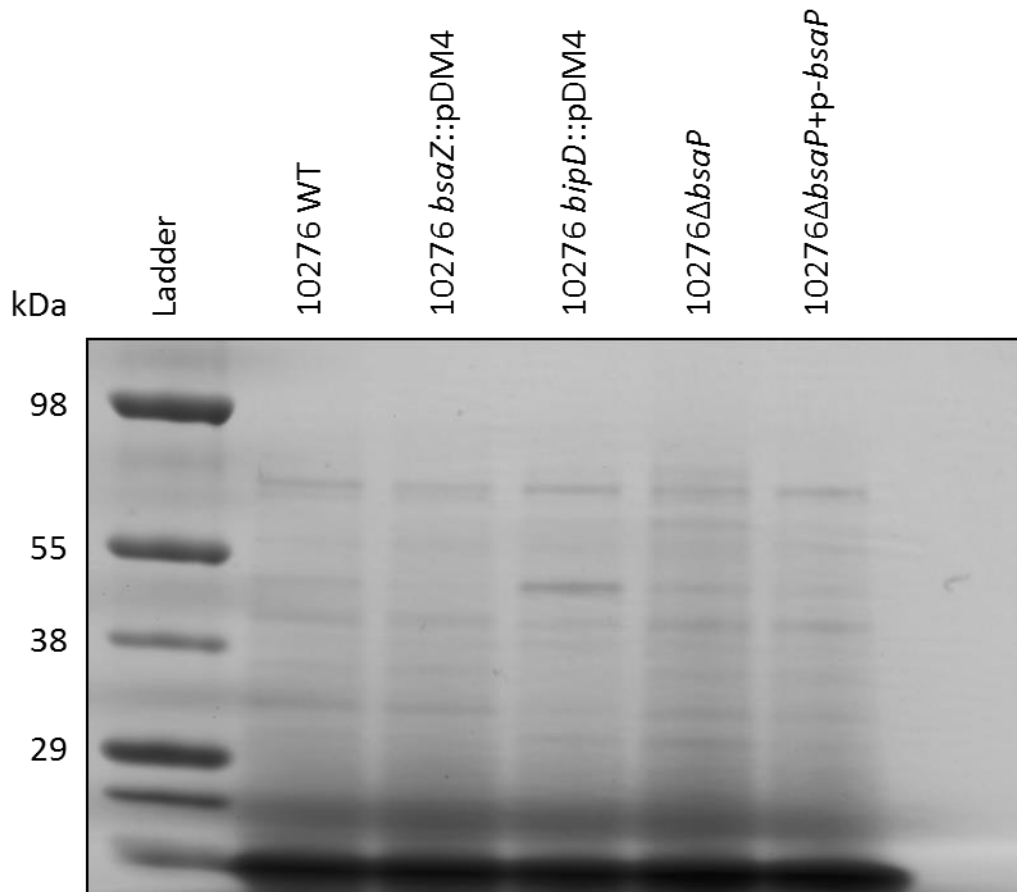


Figure S3. *B. pseudomallei* wild-type and mutant strain secreted proteins.

Supernatants were collected from *B. pseudomallei* strains 10276 WT, 10276 *bsaZ*::pDM4, 10276 *bipD*::pDM4, 10276Δ*bsaP* and 10276Δ*bsaP* *pbsaP* after culture for 6 h at 37°C. Equal amounts of protein were separated by reducing SDS-PAGE and visualised by Coomassie Blue staining.