

Figure S4.

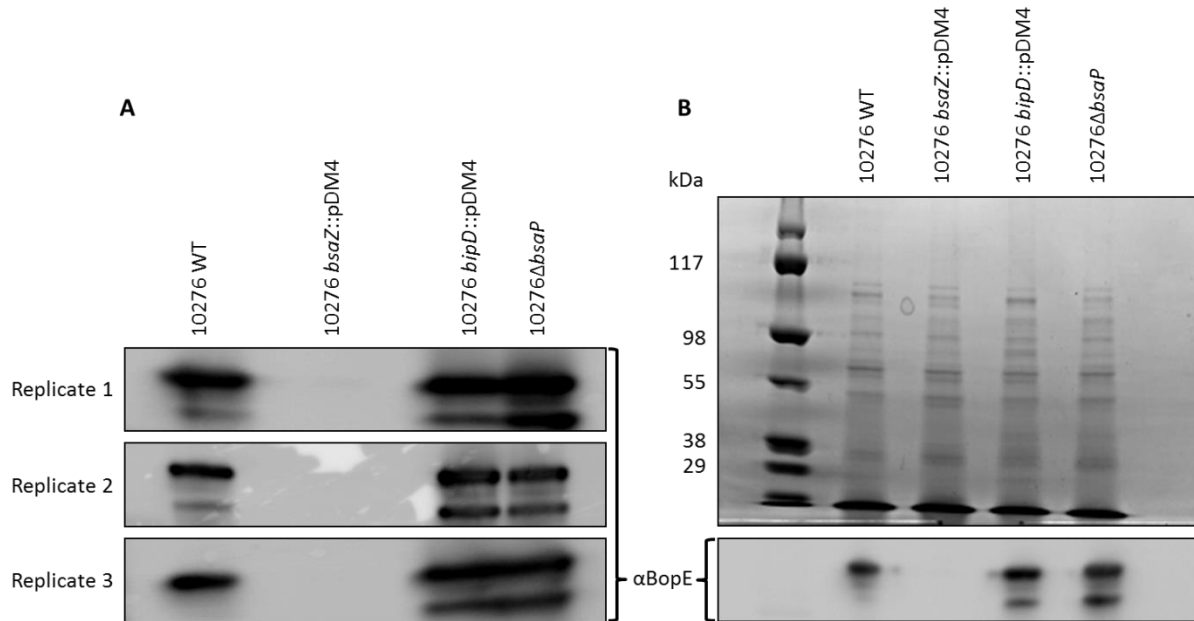


Figure S4. Western blots of 3 biological replicates pooled for iTRAQ labelling.

(A) In three independent biological replicates, supernatants were collected from *B. pseudomallei* strains 10276 WT, 10276 *bsaZ*::pDM4, 10276 *bipD*::pDM4, and 10276 Δ *bsaP* after culture for 6 h at 37°C. Equal quantities of protein from the cell-free supernatants were separated by denaturing SDS-PAGE and transferred to a nitrocellulose membrane for protein detection using polyclonal rabbit α -BopE (1). (B) The supernatants from the three independent biological replicates were pooled in equimolar ratios. Equal quantities of protein were separated by denaturing SDS-PAGE and visualised by Coomassie Blue staining or transferred to a nitrocellulose membrane for protein detection using polyclonal rabbit α -BopE (1).

1. Stevens, M. P., Friebel, A., Taylor, L. A., Wood, M. W., Brown, P. J., Hardt, W.-D., and Galyov, E. E. (2003) A *Burkholderia pseudomallei* type III secreted protein, BopE, facilitates bacterial invasion of epithelial cells and exhibits guanine nucleotide exchange factor activity. *J. Bacteriol.* 185, p. 4992–4996