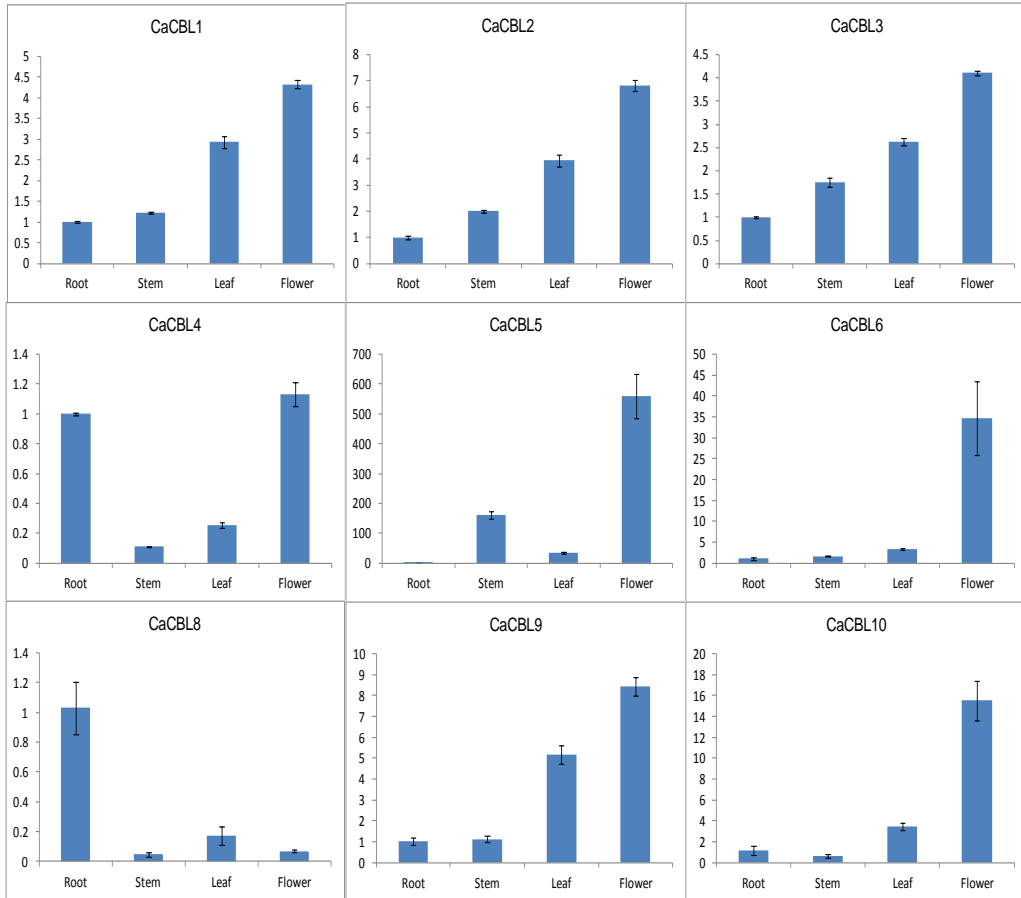
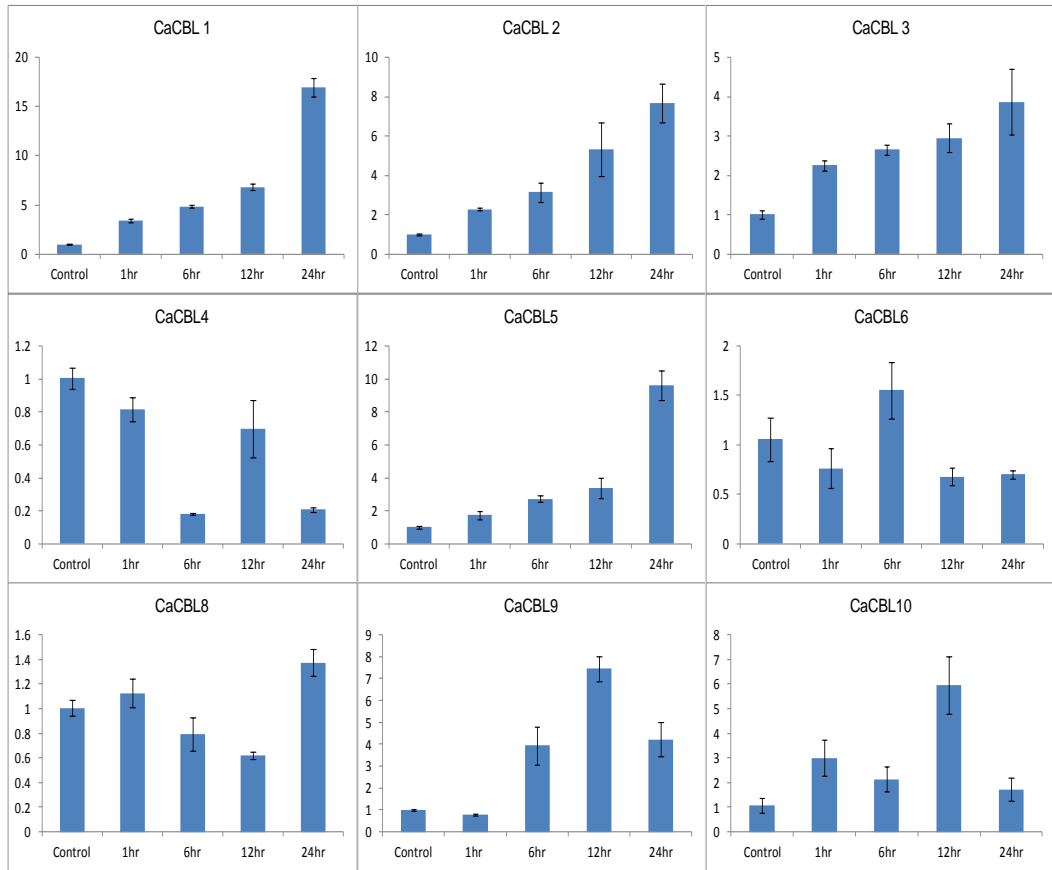


# S4 (A-I) Fig. Relative expression values of *CaCBL* genes in chickpea

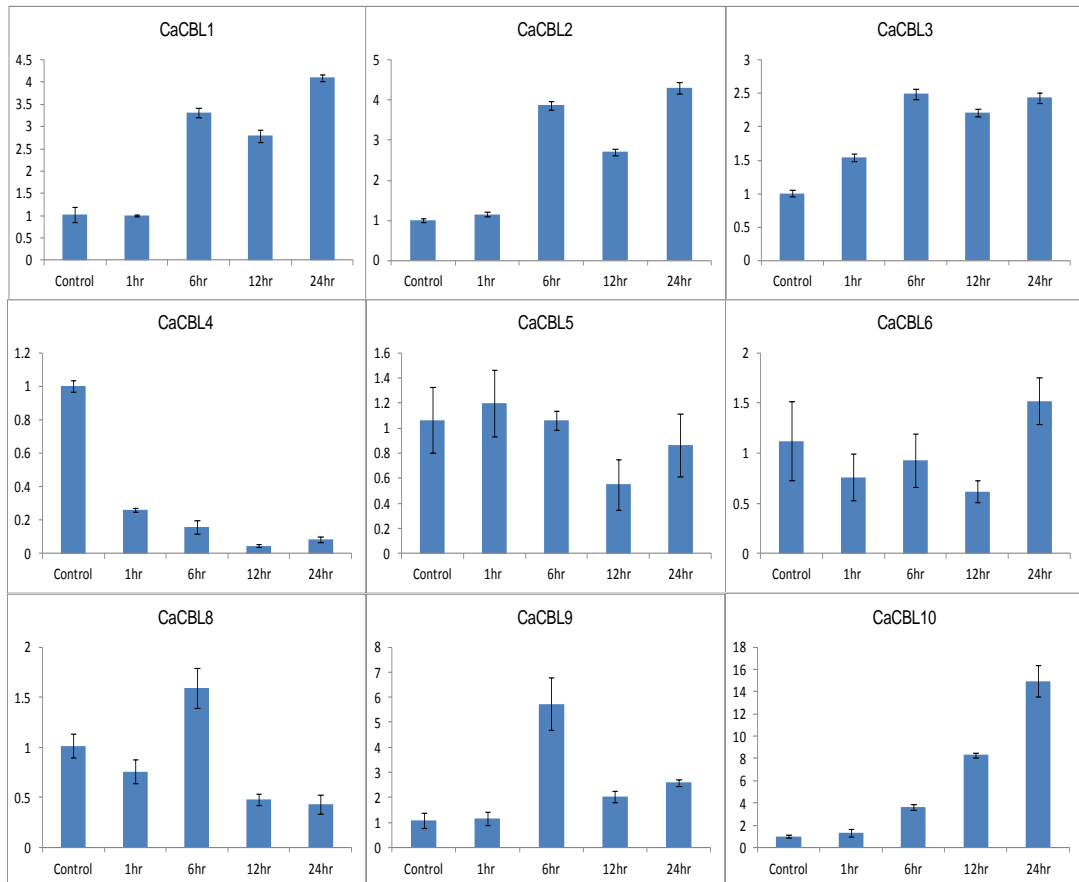
**S4A Fig.** Relative expression values of *CaCBL* genes in different tissues of chickpea analysed by qRT-PCR



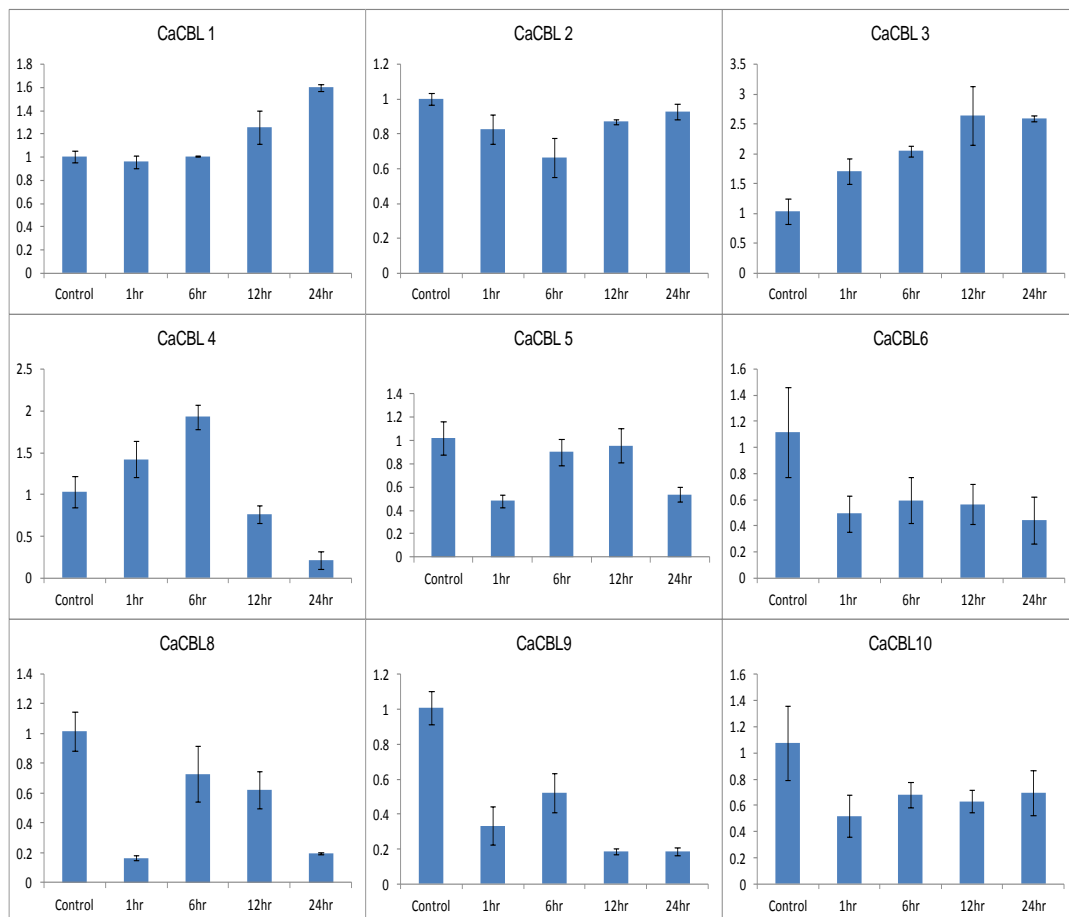
**S4B Fig.** Relative expression values of *CaCBL* genes in chickpea seedlings exposed to 20% PEG for different period analysed by qRT-PCR



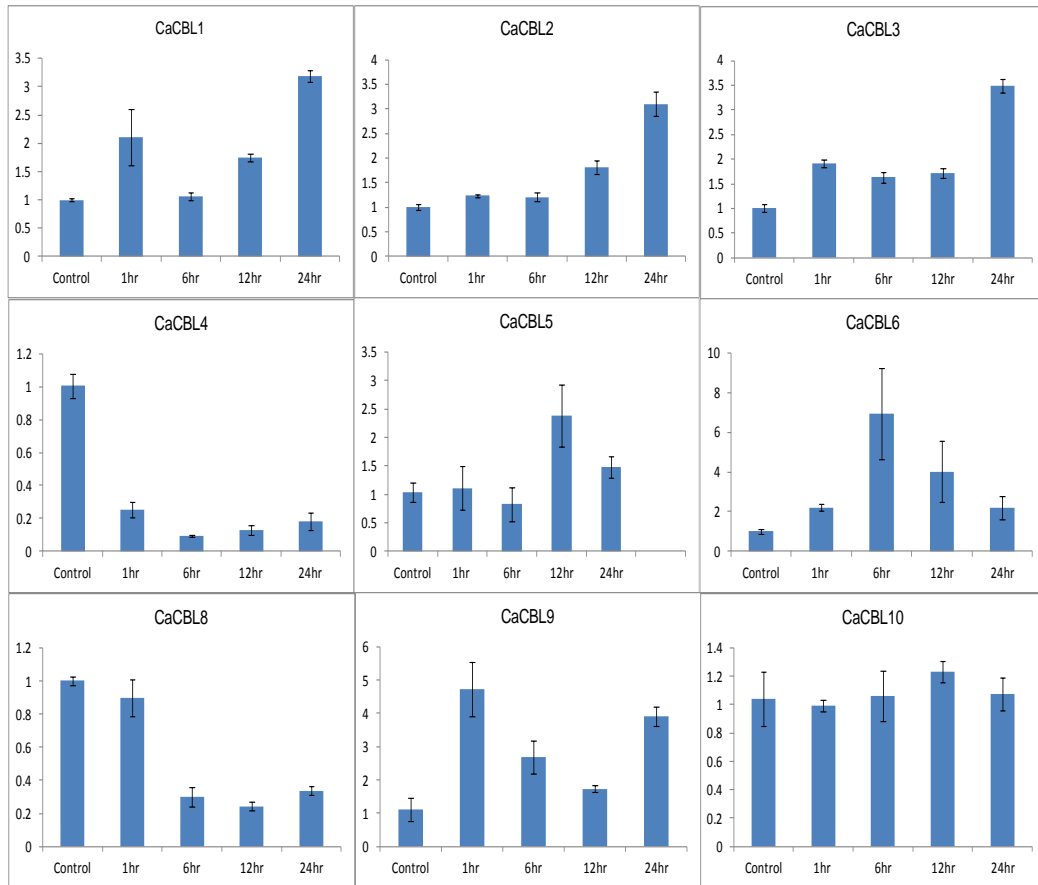
**S4C Fig.** Relative expression values of *CaCBL* genes in chickpea seedlings exposed to 250mM sodium chloride for different period analysed by qRT-PCR



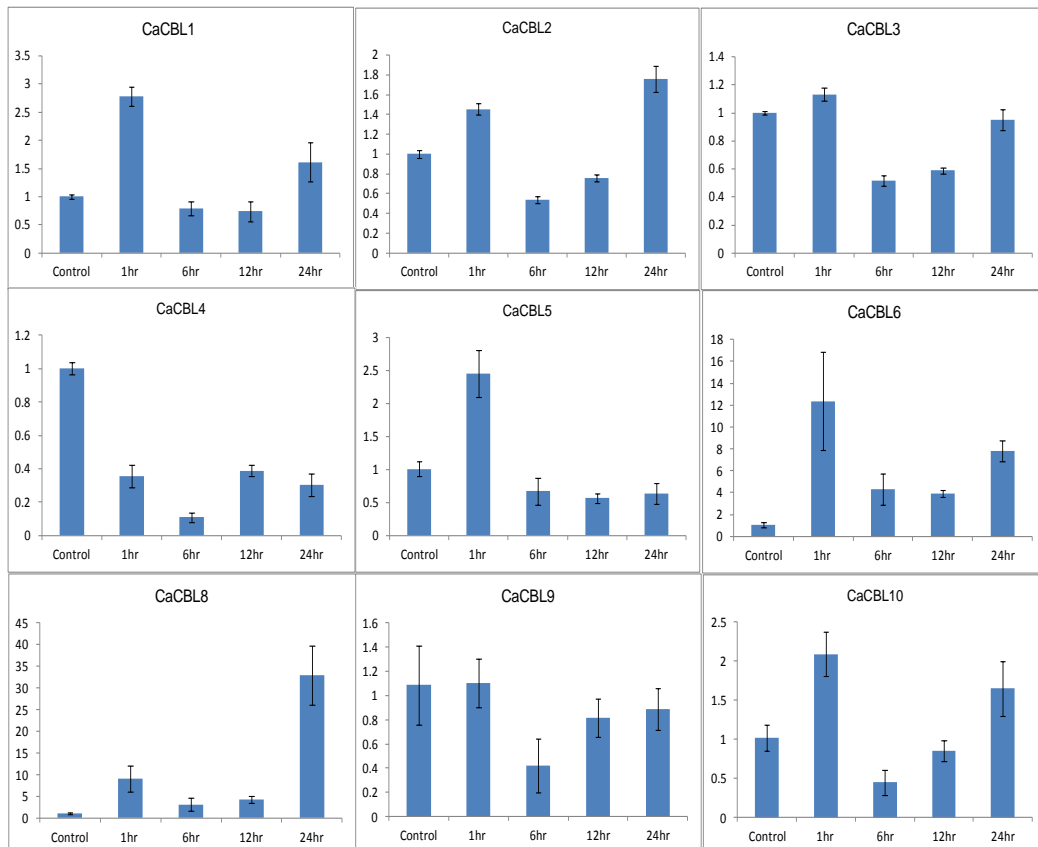
**S4D Fig.** Relative expression values of *CaCBL* genes in chickpea seedlings exposed to 4°C for different period analysed by qRT-PCR



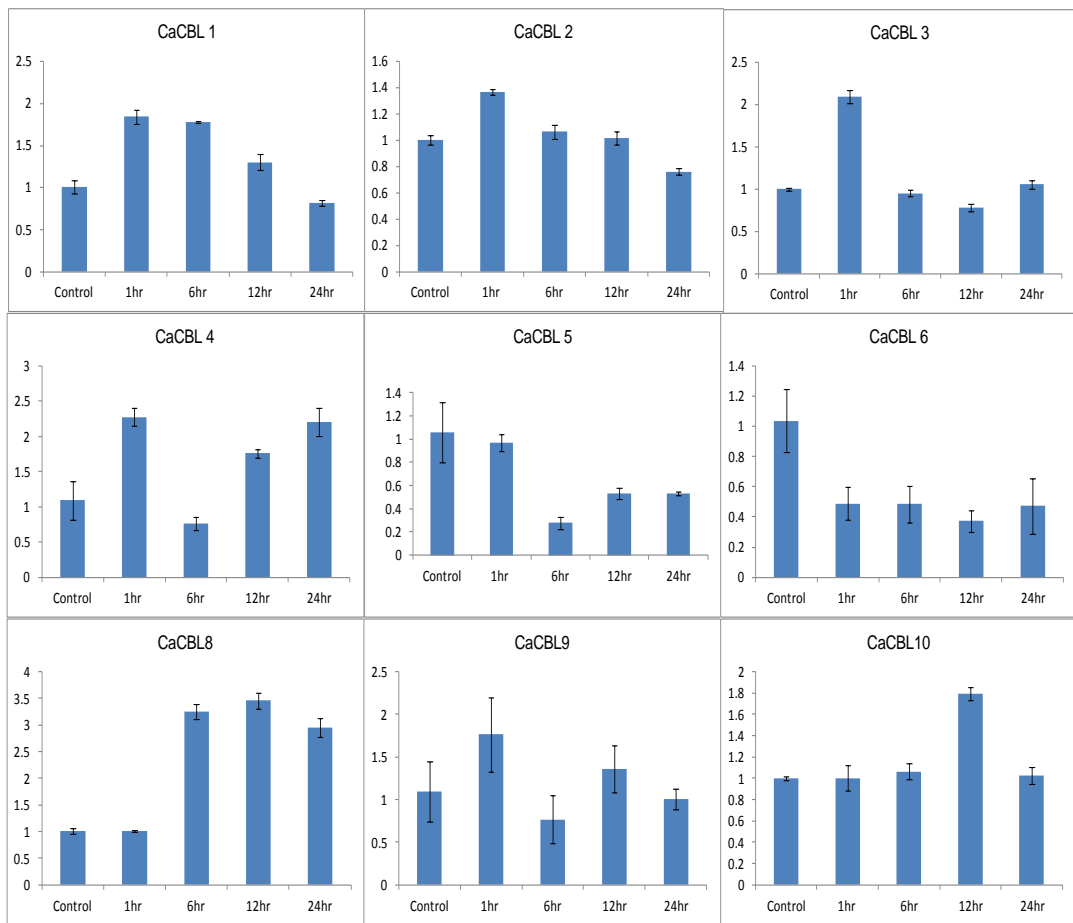
**S4E Fig.** Relative expression values of *CaCBL* genes in chickpea seedlings exposed to ABA (100 $\mu$ M) for different period analysed by qRT-PCR



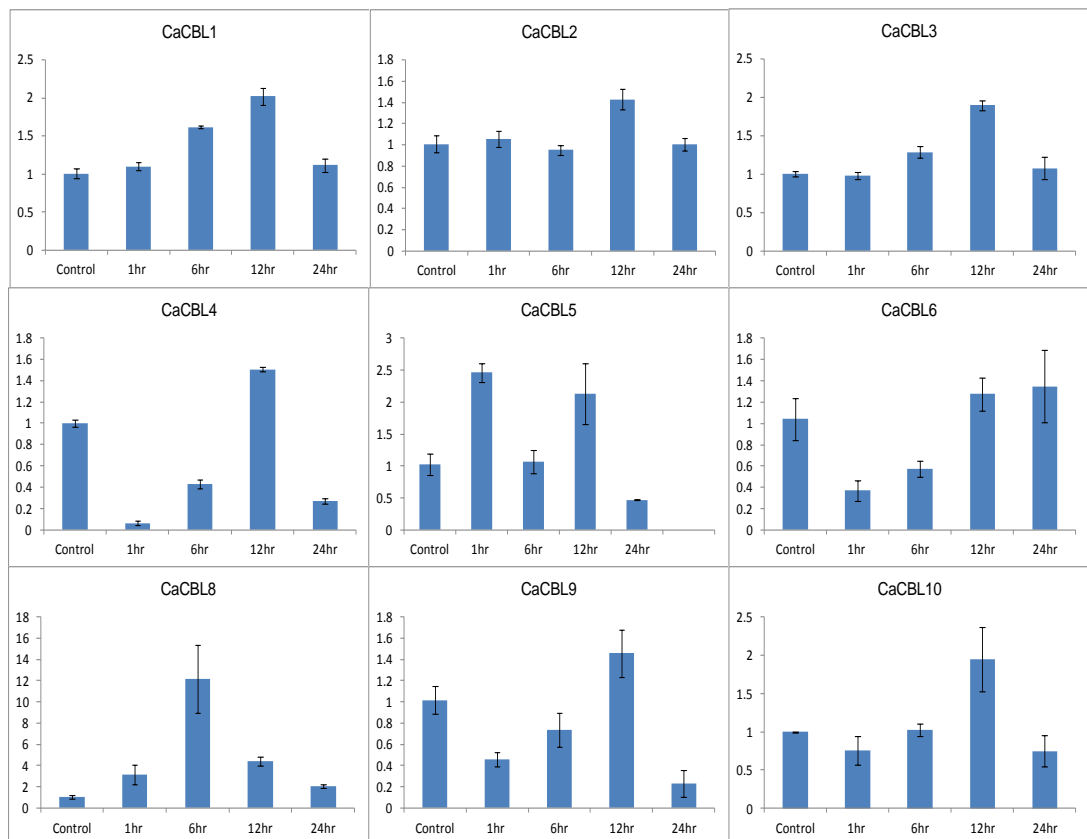
**S4F Fig.** Relative expression values of *CaCBL* genes in chickpea seedlings exposed to BAP (5 $\mu$ M) for different period analysed by qRT-PCR



**S4G Fig.** Relative expression values of *CaCBL* genes in chickpea seedlings exposed to IAA (5 $\mu$ M) for different period analysed by qRT-PCR



**S4H Fig.** Relative expression values of *CaCBL* genes in chickpea seedlings exposed to methyl jasmonate (100 $\mu$ M) for different period analysed by qRT-PCR



**S4I Fig.** Relative expression values of *CaCBL* genes in chickpea seedlings exposed to salicylic acid (100 $\mu$ M) for different period analysed by qRT-PCR

