

Footnotes for Figures 1–5

Web Figure 1 - Sex-Specific Trajectories of AD Progression in the Predictors 1 Data, 1-D Model

Note: The horizontal axis indicates the time since intake to Predictors 1. The vertical axis indicates the progression of AD using the predicted score on Pure Type I at each follow-up examination for persons who were predicted to be exactly like Pure Type I at the time of the first examination. The Pure Type predictions were based on sex-specific models.

Web Figure 2 - Individual Trajectories of AD Progression in the Predictors 1 Data, 1-D Model, 103 Males

Note: The horizontal axis indicates the time since intake to Predictors 1. The vertical axis indicates the progression of AD using the predicted score on Pure Type I at each follow-up examination for males who displayed a range of predicted values for Pure Type I at the time of the first examination.

Web Figure 3 - Individual Trajectories of AD Progression in the Predictors 1 Data, 1-D Model, 149 Females

Note: The horizontal axis indicates the time since intake to Predictors 1. The vertical axis indicates the progression of AD using the predicted score on Pure Type I at each follow-up examination for females who displayed a range of predicted values for Pure Type I at the time of the first examination.

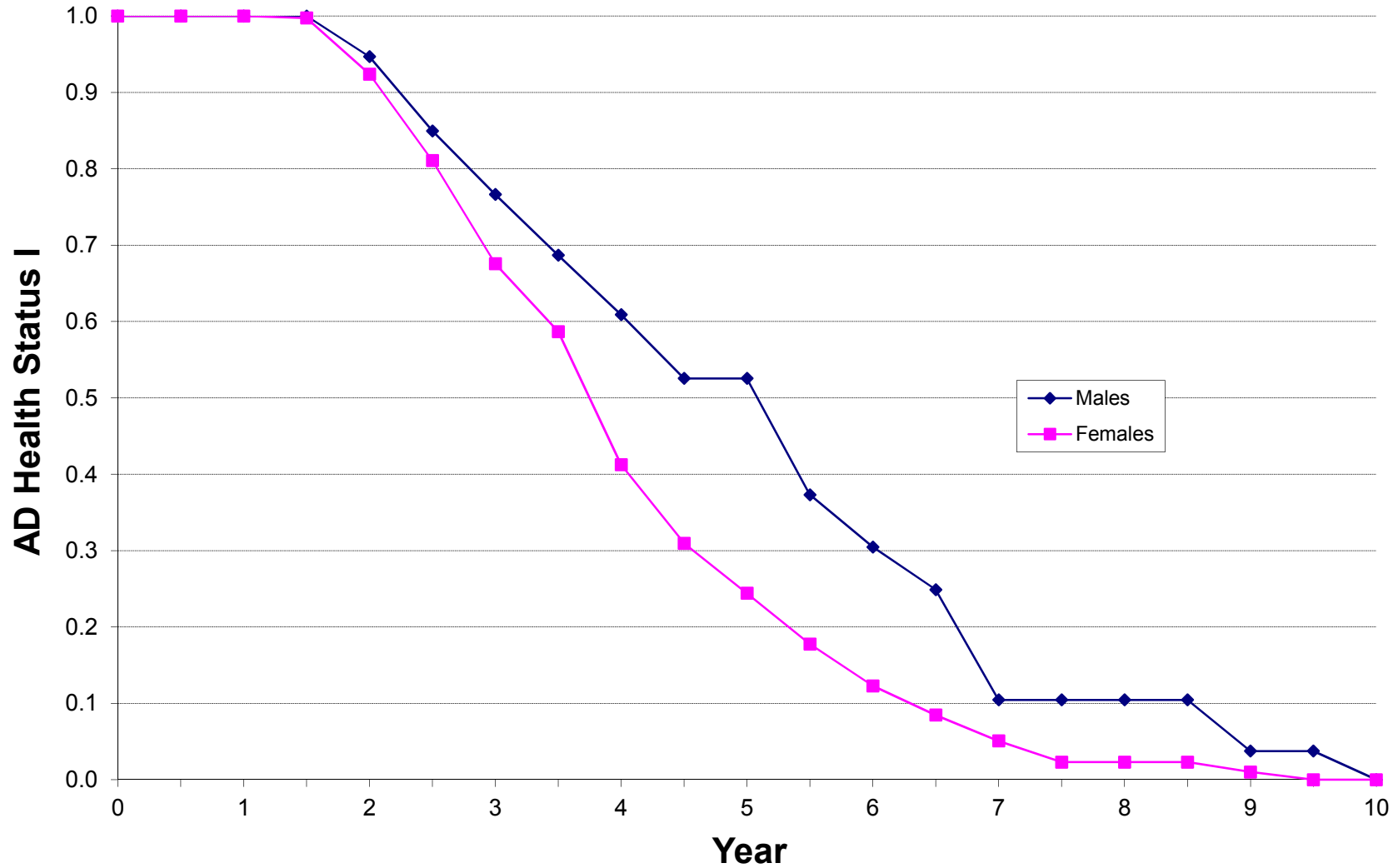
Web Figure 4 - Individual Trajectories of AD Progression in the Predictors 1 Data, 3-D Model, 103 Males

Note: The horizontal axis indicates the time since intake to Predictors 1. The vertical axis indicates the progression of AD using the sum of the predicted scores on Pure Types I, II, and III at each follow-up examination for males who displayed a range of values for the sum of the predicted scores on Pure Types I, II, and III at the time of the first examination. The sum of the predicted scores on Pure Types I, II, and III is the complement of the predicted score on Pure Type IV which is associated with the highest AD severity in the 3-D model.

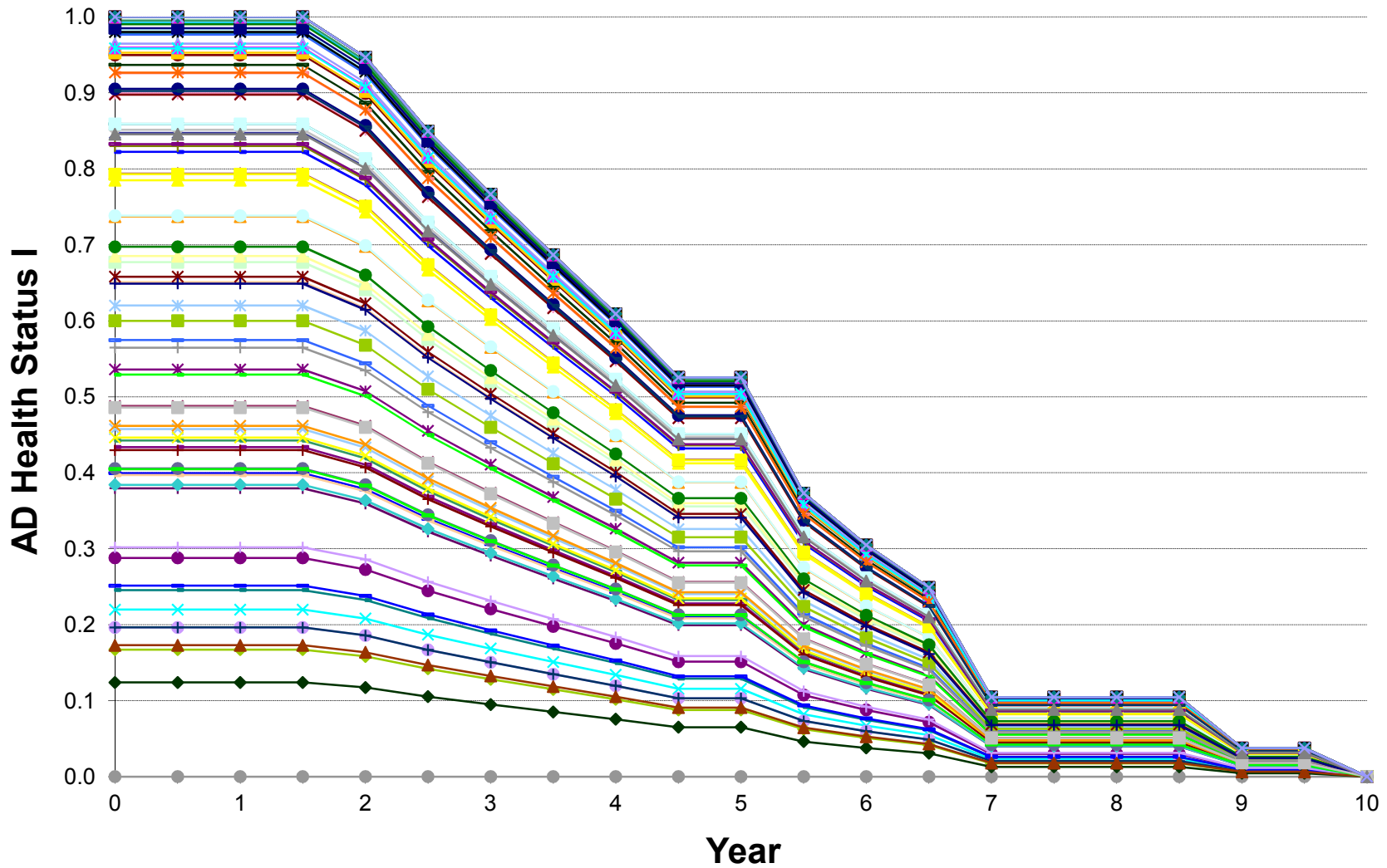
Web Figure 5 - Individual Trajectories of AD Progression in the Predictors 1 Data, 3-D Model, 149 Females

Note: The horizontal axis indicates the time since intake to Predictors 1. The vertical axis indicates the progression of AD using the sum of the predicted scores on Pure Types I, II, and III at each follow-up examination for females who displayed a range of values for the sum of the predicted scores on Pure Types I, II, and III at the time of the first examination. The sum of the predicted scores on Pure Types I, II, and III is the complement of the predicted score on Pure Type IV which is associated with the highest AD severity in the 3-D model.

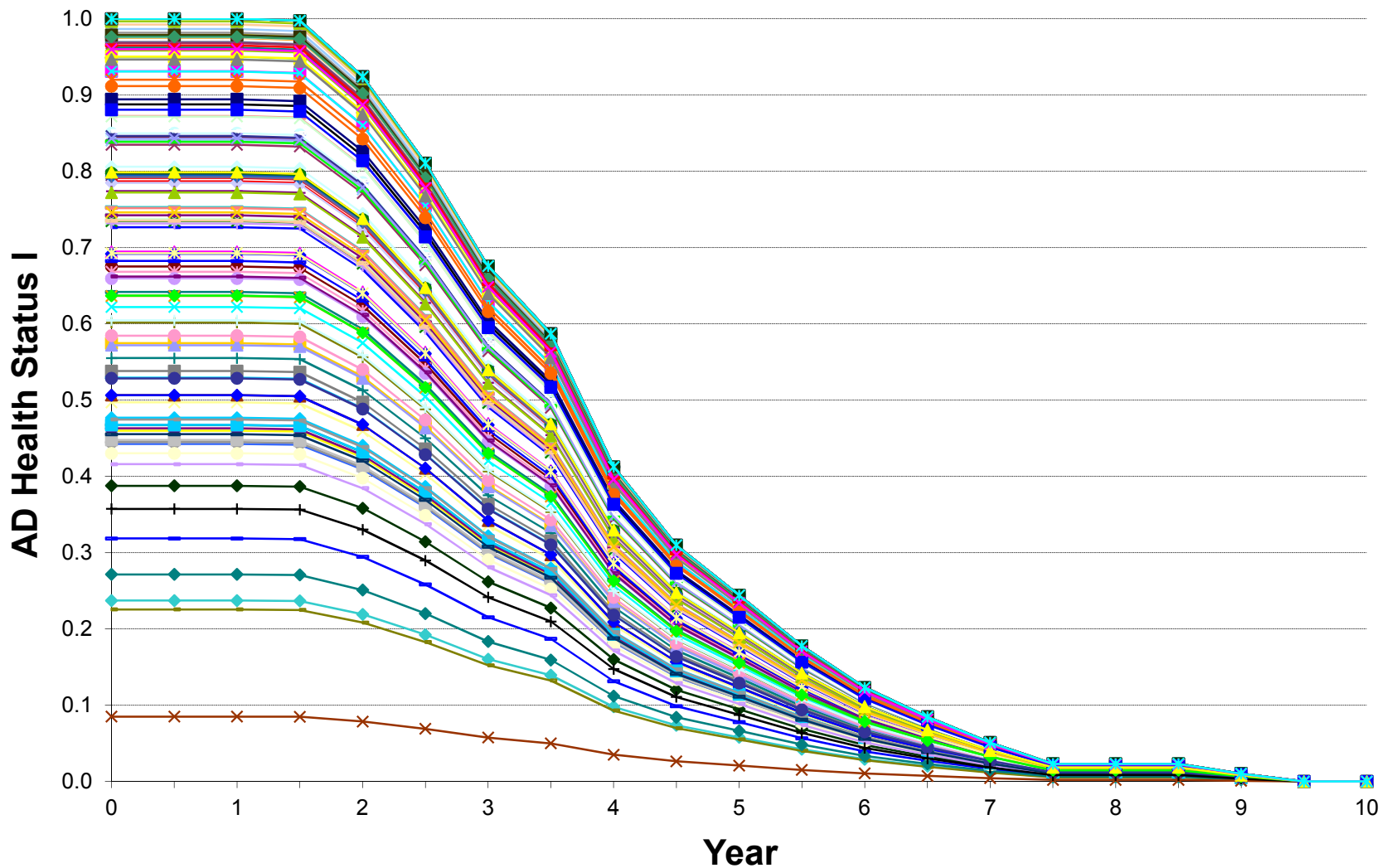
Web Figure 1 Sex-Specific Trajectories of AD Progression in the Predictors 1 Data, 1-D Model



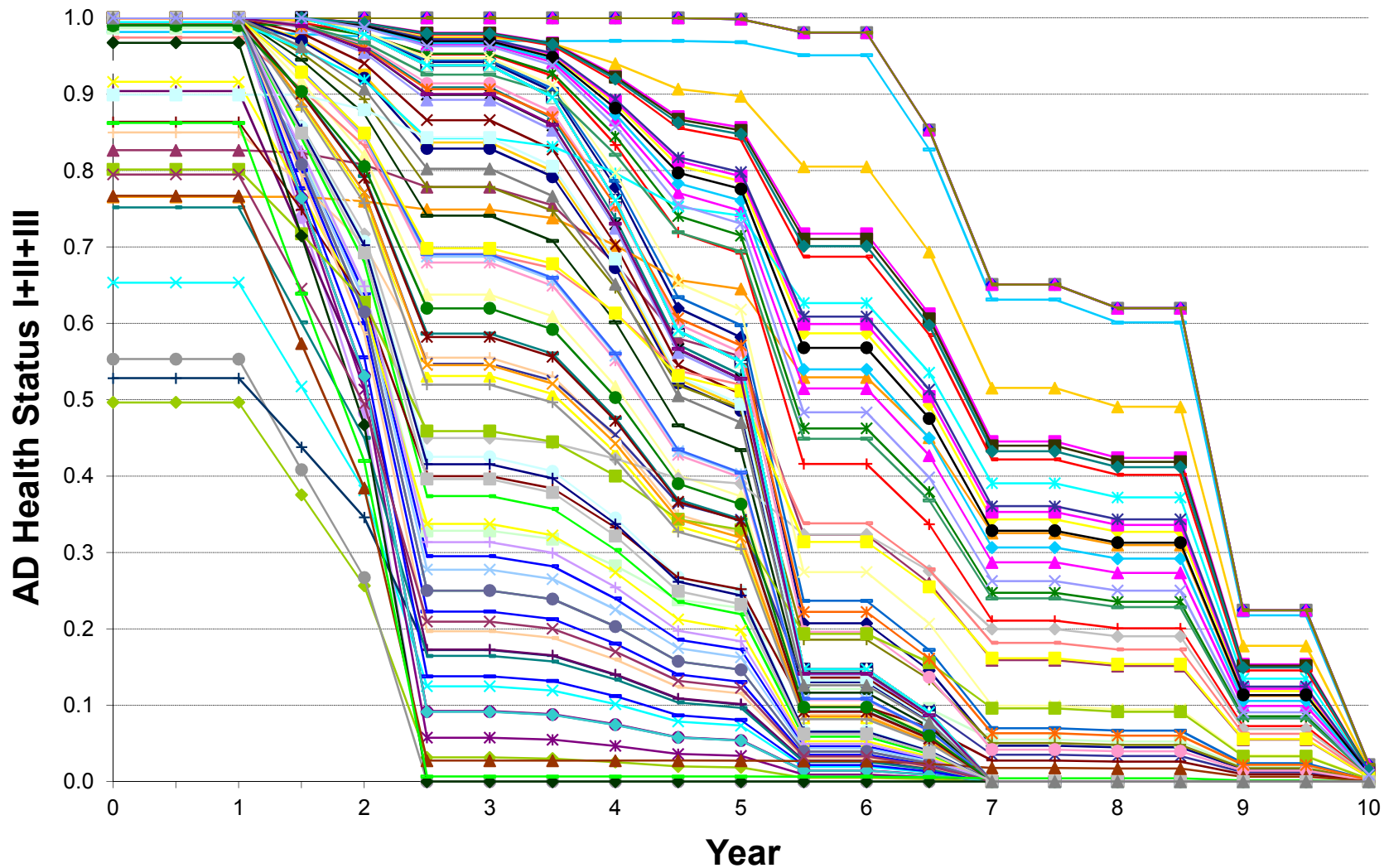
Web Figure 2 Individual Trajectories of AD Progression in the Predictors 1 Data, 1-D Model, 103 Males



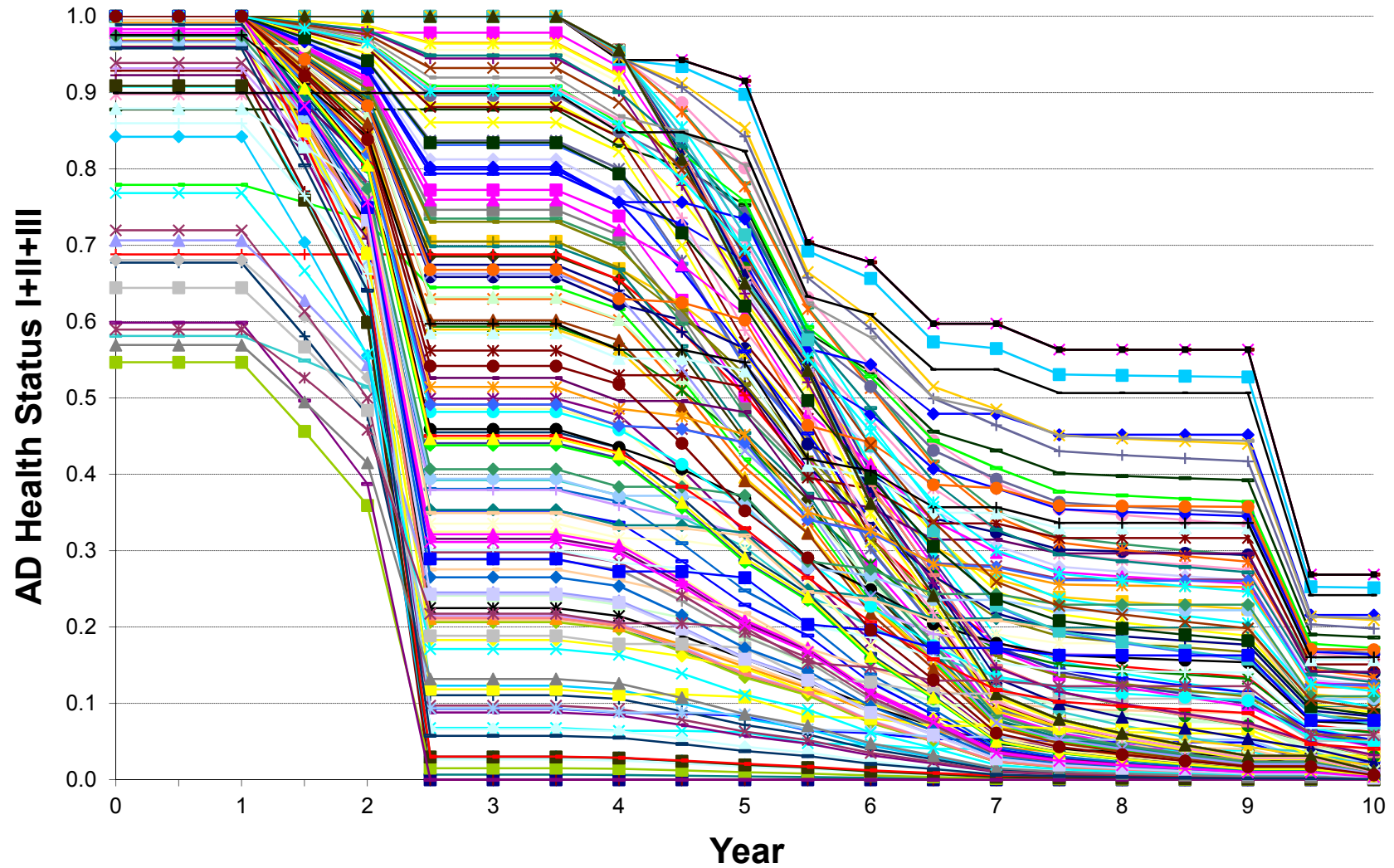
Web Figure 3 Individual Trajectories of AD Progression in the Predictors 1 Data, 1-D Model, 149 Females



Web Figure 4 Individual Trajectories of AD Progression in the Predictors 1 Data, 3-D Model, 103 Males



Web Figure 5 Individual Trajectories of AD Progression in the Predictors 1 Data, 3-D Model, 149 Females



Header for Tables A1–A7

WebTables A1-A7 are supplementary tables with detailed statistical tests and extensive sets of parameter estimates that can be provided online in a web-only format for interested readers, at <http://mdm.sagepub.com/>.

These tables are referenced in the 4–7th footnotes of the main text.

Web Table A1: Model Selection Criteria for Sex-Specific Analyses of Predictors 1 Data

D	K	I	J	M	M-J	df	N*	N**	ln(N*)	ln(N**)	Log-Likelihood	Model Selection Criterion				Deviation from Minimum Value of Criterion			
												AIC	BIC1	BIC2	CAIC	ΔAIC	ΔBIC1	ΔBIC2	ΔCAIC
Males																			
0	1	103	80	248	168	168	632	632	6.45	6.45	-43,414.82	87,165.64	87,912.94	87,912.94	88,080.94	18,268.48	14,118.31	13,839.03	13,185.31
1	2	103	80	248	168	459	632	683	6.45	6.53	-37,722.05	76,362.11	78,403.83	78,439.78	78,862.83	7,464.95	4,609.20	4,365.88	3,967.20
2	3	103	80	248	168	770	632	747	6.45	6.62	-35,073.61	71,687.21	75,112.34	75,241.38	75,882.34	2,790.06	1,317.70	1,167.47	986.70
3	4	103	80	248	168	1,101	632	814	6.45	6.70	-33,347.58	68,897.15	73,794.63	74,073.91	74,895.63	0.00	0.00	0.00	0.00
Females																			
0	1	149	79	248	169	169	991	991	6.90	6.90	-64,293.37	128,924.74	129,752.65	129,752.65	129,921.65	26,331.52	21,070.15	20,980.33	19,996.15
1	2	149	79	248	169	507	991	933	6.90	6.84	-55,171.08	111,356.17	113,839.89	113,809.28	114,346.89	8,762.95	5,157.39	5,036.97	4,421.39
2	3	149	79	248	169	865	991	990	6.90	6.90	-51,828.33	105,386.67	109,624.18	109,623.51	110,489.18	2,793.45	941.68	851.20	563.68
3	4	149	79	248	169	1,243	991	1,065	6.90	6.97	-50,053.61	102,593.22	108,682.50	108,772.32	109,925.50	0.00	0.00	0.00	0.00

Notes

$df = I \times D + K \times (M - J) + T \times D \times K / 2$, where $T \equiv \max(t) = 20$, is the time index for the last follow-up examination.

N^* is the df -weighted geometric mean number of responses to the J variables.

N^{**} is the geometric mean number of additive terms in the formulas for the df diagonal elements of the $df \times df$ Hessian matrix of the Log-Likelihood function.

AIC = $-2 \times \text{Log-Likelihood} + 2 \times df$; see Akaike (1973).

BIC1 = $-2 \times \text{Log-Likelihood} + df \times \ln(N^*)$; see Schwarz (1978).

BIC2 = $-2 \times \text{Log-Likelihood} + df \times \ln(N^{**})$; see Raftery (1995).

CAIC = $-2 \times \text{Log-Likelihood} + df \times \ln(N^*) + df$; CAIC is a mnemonic for "consistent" AIC – see Bozdogan (1987).

For each selection criterion, the best model has the minimum value, shown in boldface.

Web Table A2: ΔBIC_j Statistics and Their Rankings by Variable for the Sex-Specific 1-D and 3-D Models for the Predictors 1 Data

<i>j</i> Variable Name/Description	Males						Females					
	<i>L</i>	<i>N</i>	ΔBIC_j 0-1	Rank	ΔBIC_j 0-3	Rank	<i>L</i>	<i>N</i>	ΔBIC_j 0-1	Rank	ΔBIC_j 0-3	Rank
1 Prospective 6-month survival	2	1,085	12.95	46	17.04	52	2	1,673	20.60	48	27.83	51
2 Retrospective 6-month survival	2	1,043	6.68	52	10.62	55	2	1,609	19.42	49	20.77	54
3 Age-group at Intake:	6	1,146	5.19	55	55.46	39	6	1,758	-12.14	77	799.11	16
4 B04: Ethnic Group	2	1,146	-0.59	63	-19.62	73	3	1,758	-2.50	58	11.78	56
5 B05: Hispanic	3	1,146	-3.63	67	-24.56	78	5	1,758	15.03	52	-2.06	62
6 B06: Highest Grade	3	1,132	8.94	50	-7.55	61	3	1,758	-12.87	78	108.34	38
7 B07: Birth Place	3	1,141	-11.03	79	-23.12	76	4	1,750	22.45	47	222.98	32
8 B08: State of Birth	3	964	0.57	60	-20.03	74	3	1,554	-6.36	68	73.38	43
9 B09: Citizen of US	2	1,121	0.74	58	19.07	51	2	1,696	1.48	57	-13.26	66
10 B12: Predominant Language	3	1,146	0.65	59	24.02	45	2	1,758	-7.39	74	-9.68	65
11 B13: How Well Is English Spoken	3	1,146	12.46	47	21.91	49	2	1,758	18.79	50	0.49	60
12 B14: Occupation	7	1,146	59.67	36	22.27	47	8	1,758	-37.39	79	183.15	35
13 XX01: Cause of Death	6	41	-10.46	78	-29.08	80	6	48	-10.31	76	-44.80	79
14 XX03: Autopsy	4	52	-10.37	77	-26.48	79	3	61	-7.35	73	-14.90	68
15 Periods since first time sought help: RECODE	5	1,085	439.30	8	644.72	11	5	1,544	935.47	2	927.81	10
16 PP43: Wandered Away	2	919	-1.28	64	23.99	46	2	1,405	15.51	51	21.92	53
17 PP44: Verbal Outbursts	2	919	13.51	45	14.60	53	2	1,405	66.15	34	86.31	41
18 PP45: Physical Threats	3	919	83.41	32	83.29	35	3	1,405	47.16	39	63.50	45
19 PP50: Difficulty Sleeping	2	919	0.15	61	-7.11	60	2	1,404	-4.93	65	-21.37	74
20 PP51: How Much Sleep?	4	260	-12.85	80	-14.46	65	4	294	5.36	55	-24.46	75
21 Overall mMMS GATE	2	1,146	182.09	26	270.92	28	2	1,758	304.21	26	416.21	29
22 SS01: Total mMMS Score: RECODE	4	732	266.02	19	528.27	16	4	1,088	490.86	16	825.18	14
23 SS02: mMMS - Orientation: RECODE	3	736	228.88	22	481.04	18	3	1,099	383.26	21	599.84	19
24 SS03: mMMS - Registration	4	736	148.43	28	280.74	27	4	1,099	200.70	29	311.43	30
25 SS07: mMMS - Attention/Calculation: serial 7s, WORLD, Add coins	8	734	126.08	30	239.90	30	8	1,096	252.64	28	466.02	27
26 SS09: mMMS - Recall: 3-word memory	4	735	-0.50	62	70.92	37	4	1,099	26.14	45	28.68	50
27 SS11: mMMS - repeat 2 phrases, 3-stage cmd., read/obey, write sent.	8	734	207.08	23	373.20	23	8	1,092	345.57	23	552.55	22
28 SS12: mMMS - Construction: circle, diamond, cube	3	733	134.06	29	297.50	26	3	1,090	123.04	33	293.41	31
29 CC08: Living Status	6	919	312.81	17	469.04	19	6	1,418	387.50	20	549.49	23
30 Periods since entered nursing home: RECODE	5	224	20.34	40	-20.19	75	5	481	54.22	37	8.62	57
31 NN01: Patient Trouble With Chores	3	919	230.71	20	375.41	22	3	1,416	391.56	19	552.99	21
32 NN02: Patient Trouble Handling Money	3	919	230.69	21	425.67	21	3	1,416	419.23	17	532.52	24
33 NN03: Patient Trouble Remembering Lists	3	919	70.07	34	117.54	34	3	1,416	132.94	32	198.59	33
34 NN04: Patient Trouble Around House	3	918	442.45	5	724.38	4	3	1,416	810.17	5	994.48	7
35 NN05: Patient Trouble Around Neighborhood	3	918	436.62	9	621.35	13	3	1,416	683.40	11	863.88	13
36 NN06: Patient Trouble Recognizing Place	3	919	397.93	11	637.06	12	3	1,416	737.27	7	920.73	11
37 NN07: Patient Trouble Remembering Things	3	919	78.35	33	136.78	33	3	1,416	143.38	30	179.77	36
38 NN08: Patient Dwell in the Past	3	917	28.98	38	50.60	41	3	1,415	55.40	36	70.11	44
39 NN09: Patient Eating	4	919	336.15	16	564.63	15	4	1,418	527.80	15	782.06	17
40 NN10: Patient Dressing	4	919	484.95	2	832.35	2	4	1,418	800.71	6	1,145.59	2
41 NN11: Patient Bladder and Bowel Control	4	919	369.41	13	648.54	10	4	1,418	694.63	10	930.83	9
42 RR01: Needs Reminders	3	918	34.03	37	64.23	38	3	1,418	63.06	35	95.17	39
43 RR02: Needs Help to Remember	3	919	11.14	48	34.39	43	3	1,418	48.07	38	76.96	42
44 RR03: Needs Help Finding Things	2	919	7.87	51	27.59	44	2	1,418	23.71	46	40.99	46
45 RR04: Needs Household Chores Done	2	918	184.67	25	315.43	25	2	1,418	266.48	27	504.90	26
46 RR05: Needs Watching When Awake	2	919	292.19	18	452.11	20	2	1,419	329.98	24	529.54	25
47 RR06: Needs to be Escorted When Outside	2	919	372.30	12	520.51	17	2	1,418	407.22	18	673.48	18

48 RR07: Needs to be Accompanied	2	919	552.55	1	684.86	7	2	1,419	643.29	13	873.07	12
49 RR08: Needs to be Dressed/Washed/Groomed	2	919	439.47	7	687.12	6	2	1,419	843.74	4	996.30	5
50 RR09: Needs to be Taken to Toilet	2	919	363.34	14	654.51	8	2	1,419	722.34	8	994.54	6
51 RR10: Needs to be Fed	2	919	197.54	24	349.86	24	2	1,419	380.82	22	569.43	20
52 RR11: Needs to be Turned/Moved/Transferred	2	919	158.57	27	267.60	29	2	1,419	320.13	25	465.84	28
53 RR12: Needs to Wear Diaper/Catheter	2	919	352.94	15	649.00	9	2	1,419	563.40	14	803.70	15
54 RR13: Needs to be Tube Fed	2	919	13.71	44	13.90	54	2	1,419	26.81	44	29.76	49
55 RR14: Dependence Level	6	919	474.29	3	881.54	1	6	1,419	871.21	3	1,342.45	1
56 RR15: Equivalent Institutional Service	3	919	469.07	4	746.19	3	3	1,415	658.93	12	1,070.89	3
57 Neurologist Estimation of Illness (No. of INTERVALS)	5	1,073	440.82	6	575.58	14	5	1,648	946.09	1	997.37	4
58 KK16: Had Seizure?	2	870	-3.48	66	-16.03	67	2	1,351	10.37	53	1.51	58
59 KK17: First Time Seizure?	2	18	-2.15	65	-7.76	62	2	41	-3.38	60	-6.74	63
60 Periods since seizures began: RECODE	4	81	-7.63	76	-23.27	77	4	166	-4.63	62	-30.86	77
61 KK19: How Frequently Do Seizures Occur?	4	16	-6.89	75	-17.94	68	4	30	-4.84	64	-24.68	76
62 FF10: Adequate Sight?	2	368	5.95	54	3.23	57	2	461	-6.13	67	-8.56	64
63 JJ17A: Beer/Week: RECODE	3	857	10.95	49	-3.78	59	3	1,347	-8.65	75	-33.12	78
64 JJ17B: Wine/Week: RECODE	3	853	14.66	43	53.22	40	3	1,347	9.84	54	15.31	55
65 JJ17C: Hard Liquor/Week: RECODE	3	854	18.13	42	19.26	50	3	1,347	27.22	43	35.15	48
66 JJ17D: All Alcoholic Drinks/Week: RECODE	3	859	61.59	35	76.82	36	3	1,356	43.71	41	87.00	40
67 EF1: Hypertension	2	781	-5.34	69	-15.45	66	2	1,224	-6.95	72	-14.85	67
68 EF2: Diabetes	2	782	-5.25	68	-18.30	70	2	1,228	-6.57	69	-16.61	71
69 EF3: Myocardial Infarction	2	782	-5.90	72	-18.21	69	-	-	-	-	-	-
70 EF4: Heart Disease	2	782	-5.43	70	-18.73	71	2	1,227	-3.46	61	-15.79	69
71 EF5: Stroke	2	590	-6.33	73	-13.16	64	2	878	-4.95	66	-16.33	70
72 EF5A: TIA	2	34	6.41	53	6.52	56	2	46	4.34	56	0.19	61
73 EF6: Surgery	2	780	-5.86	71	-18.98	72	2	1,225	-6.80	70	-19.47	73
74 EF7: Admission to Hospital	2	784	1.37	56	-9.93	63	2	1,232	-4.71	63	-17.16	72
75 EF8: Other Treatment	2	782	23.46	39	22.02	48	2	1,219	33.40	42	21.96	52
76 NNTOT: Total dependence scale score: RECODE	4	915	401.22	10	708.70	5	4	1,414	696.28	9	973.40	8
77 DELUSION: Delusions	2	915	18.90	41	175.80	31	2	1,395	44.39	40	119.70	37
78 HALLUCIN: Hallucinations	2	915	1.04	57	35.13	42	2	1,395	-6.87	71	36.68	47
79 ILLUSION: Illusions	2	915	-6.65	74	-1.22	58	2	1,394	-3.00	59	1.08	59
80 EPSXS: Moderate extrapyramidal symptoms	2	589	109.37	31	151.61	32	2	933	133.97	31	189.81	34
Total	248	65,988	10,302.23		16,884.59		248	100,235	17,078.67		24,981.80	

Note: Boldface font indicates variables detailed in Tables 1 and 2.

Web Table A3: Response Probabilities by Pure Type for the 3-Dimensional Model of AD Progression in the Predictors 1 Data, Males

j	Variable	Response	No. of		Pure Type				ΔBIC _j 0-3	Rank	
			Obs.	Observed	Predicted	I	II	III			IV
1	Prospective 6-month survival	Died	70	0.065	0.064	0.009	0.018	0.038	0.152	17.04	52
		Survived	1,015	0.935	0.936	0.991	0.982	0.962	0.848		
2	Retrospective 6-month survival	Dead	58	0.056	0.055	0.000	0.024	0.019	0.127	10.62	55
		Alive	985	0.944	0.945	1.000	0.976	0.981	0.873		
3	Age-group at Intake:	1=<65	277	0.242	0.243	0.000	0.350	0.303	0.259	55.46	39
		2=65-69	212	0.185	0.185	0.225	0.144	0.177	0.195		
		2=70-74	255	0.223	0.221	0.428	0.164	0.088	0.253		
		2=75-79	246	0.215	0.214	0.336	0.241	0.208	0.133		
		2=80-84	130	0.113	0.114	0.000	0.101	0.180	0.132		
		6=85+	26	0.023	0.023	0.010	0.000	0.043	0.028		
4	B04: Ethnic Group	White	1,107	0.966	0.966	0.962	0.954	0.972	0.971	-19.62	73
		Black	39	0.034	0.034	0.038	0.046	0.028	0.029		
		Other	0	0.000	0.000	0.000	0.000	0.000	0.000		
5	B05: Hispanic	Not Hispanic	1,125	0.982	0.982	1.000	0.980	0.949	1.000	-24.56	78
		Mexican/Mex-Amer/Chicano	0	0.000	0.000	0.000	0.000	0.000	0.000		
		Puerto Rican	9	0.008	0.008	0.000	0.000	0.029	0.000		
		Cuban	12	0.010	0.010	0.000	0.020	0.023	0.000		
		Dominican	0	0.000	0.000	0.000	0.000	0.000	0.000		
Other	0	0.000	0.000	0.000	0.000	0.000	0.000				
6	B06: Highest Grade	0-8	36	0.032	0.032	0.000	0.054	0.050	0.020	-7.55	61
		9-12	423	0.374	0.375	0.237	0.376	0.356	0.462		
		>12	673	0.595	0.593	0.763	0.570	0.594	0.518		
7	B07: Birth Place	United States	964	0.845	0.845	0.754	0.890	0.856	0.857	-23.12	76
		Puerto Rico	9	0.008	0.008	0.000	0.000	0.029	0.000		
		Dominican Rep.	0	0.000	0.000	0.000	0.000	0.000	0.000		
		Other	168	0.147	0.147	0.246	0.110	0.115	0.143		
8	B08: State of Birth	New York	181	0.188	0.188	0.144	0.216	0.203	0.181	-20.03	74
		New Jersey	113	0.117	0.116	0.267	0.084	0.111	0.062		
		Other	670	0.695	0.696	0.589	0.700	0.686	0.757		
9	B09: Citizen of US	No	12	0.011	0.011	0.059	0.000	0.000	0.000	19.07	51
		Yes	1,109	0.989	0.989	0.941	1.000	1.000	1.000		
10	B12: Predominant Language	English	1,114	0.972	0.972	0.890	1.000	0.971	1.000	24.02	45
		Spanish	9	0.008	0.008	0.000	0.000	0.029	0.000		
		Other	23	0.020	0.020	0.110	0.000	0.000	0.000		
11	B13: How Well Is English Spoken	Very Well	1,073	0.936	0.936	0.805	0.979	0.922	0.992	21.91	49
		Well	65	0.057	0.057	0.195	0.021	0.062	0.000		
		Not Well	8	0.007	0.007	0.000	0.000	0.016	0.008		
12	B14: Occupation	Housewife	12	0.010	0.010	0.056	0.000	0.000	0.000	22.27	47
		Housewife and Other	0	0.000	0.000	0.000	0.000	0.000	0.000		
		Unskilled/Semi_Skilled	70	0.061	0.061	0.065	0.051	0.045	0.080		
		Skilled Trade	272	0.237	0.239	0.162	0.144	0.240	0.341		
		Clerical/Office	63	0.055	0.056	0.000	0.100	0.010	0.096		
		Manager Bus./Govt.	219	0.191	0.189	0.243	0.226	0.265	0.074		
		Professional	426	0.372	0.372	0.346	0.381	0.339	0.409		
		Other	84	0.073	0.072	0.129	0.097	0.102	0.000		
13	XX01: Cause of Death	Pneumonia	18	0.439	0.452	0.000	0.000	0.745	0.465	-29.08	80
		Other Infection	4	0.098	0.101	0.000	0.000	0.000	0.201		
		Cardiovascular	7	0.171	0.162	0.000	0.384	0.156	0.142		
		Cerebrovascular	4	0.098	0.095	0.000	0.153	0.099	0.095		
		Malignancy	3	0.073	0.080	0.933	0.000	0.000	0.000		
		Other	5	0.122	0.109	0.067	0.463	0.000	0.098		

14	XX03: Autopsy	None	17	0.327	0.321	0.893	0.000	0.114	0.393	-26.48	79
		General w/o brain	1	0.019	0.019	0.000	0.000	0.000	0.033		
		General with brain	8	0.154	0.166	0.000	0.892	0.101	0.120		
		Brain Only	26	0.500	0.493	0.107	0.108	0.785	0.455		
15	Periods since first time sought help RECODE	0-4	203	0.187	0.177	0.104	0.734	0.000	0.000	644.72	11
		5-9	335	0.309	0.305	0.385	0.229	0.694	0.000		
		10-14	288	0.265	0.271	0.330	0.037	0.306	0.362		
		15-19	178	0.164	0.170	0.140	0.000	0.000	0.431		
		20+	81	0.075	0.077	0.041	0.000	0.000	0.206		
16	PP43: Wandered Away	No	823	0.896	0.895	1.000	0.931	0.782	0.899	23.99	46
		Yes	96	0.104	0.105	0.000	0.069	0.218	0.101		
17	PP44: Verbal Outbursts	No	625	0.680	0.680	0.810	0.813	0.572	0.589	14.60	53
		Yes	294	0.320	0.320	0.190	0.187	0.428	0.411		
18	PP45: Physical Threats	No	746	0.812	0.813	0.984	0.982	0.779	0.597	83.29	35
		Threatening	97	0.106	0.105	0.016	0.014	0.154	0.192		
		Physical	76	0.083	0.082	0.000	0.004	0.067	0.211		
19	PP50: Difficulty Sleeping	No	655	0.713	0.713	0.671	0.690	0.636	0.831	-7.11	60
		Yes	264	0.287	0.287	0.329	0.310	0.364	0.169		
20	PP51: How Much Sleep?	Slight	112	0.431	0.430	0.619	0.407	0.326	0.398	-14.46	65
		2 hr	101	0.388	0.390	0.381	0.189	0.561	0.404		
		< 2 hr	6	0.023	0.023	0.000	0.010	0.041	0.039		
		Excessive	41	0.158	0.157	0.000	0.393	0.072	0.160		
21	Overall mMMS GATE	No answers	410	0.358	0.362	0.113	0.124	0.171	0.810	270.92	28
		Any answers	736	0.642	0.638	0.887	0.876	0.829	0.190		
22	SS01: mMMS RECODE	0-19	215	0.294	0.277	0.000	0.000	0.295	0.971	528.27	16
		20-29	132	0.180	0.190	0.000	0.221	0.439	0.000		
		30-39	203	0.277	0.285	0.251	0.508	0.267	0.029		
		40+	182	0.249	0.248	0.749	0.270	0.000	0.000		
23	SS02: mMMS - Orientation: RECODE	0	145	0.197	0.184	0.000	0.000	0.002	0.920	481.04	18
		1-5	347	0.471	0.478	0.185	0.463	0.998	0.080		
		>5	244	0.332	0.338	0.815	0.537	0.000	0.000		
24	SS03: mMMS - Registration	0	104	0.141	0.143	0.000	0.011	0.021	0.674	280.74	27
		1	76	0.103	0.106	0.000	0.089	0.135	0.208		
		2	109	0.148	0.152	0.004	0.169	0.318	0.056		
		3	447	0.607	0.599	0.996	0.731	0.527	0.061		
25	SS07: mMMS - serial 7s, WORLD, and Add coins	0	317	0.432	0.428	0.000	0.251	0.625	0.887	239.90	30
		1	97	0.132	0.134	0.000	0.232	0.160	0.112		
		2	55	0.075	0.077	0.051	0.125	0.102	0.000		
		3	30	0.041	0.041	0.078	0.065	0.018	0.000		
		4	44	0.060	0.060	0.127	0.065	0.044	0.000		
		5	62	0.084	0.084	0.238	0.081	0.024	0.000		
		6	65	0.089	0.089	0.250	0.100	0.011	0.000		
		7	64	0.087	0.087	0.257	0.081	0.018	0.000		
26	SS09: mMMS - Recall 3-word memory	0	549	0.747	0.744	0.347	0.787	0.894	0.923	70.92	37
		1	103	0.140	0.141	0.302	0.114	0.106	0.045		
		2	56	0.076	0.077	0.203	0.086	0.000	0.032		
		3	27	0.037	0.037	0.148	0.012	0.000	0.000		
27	SS11: mMMS - repeat 2 phrases, 3-stage command, read & obey	0	108	0.147	0.142	0.000	0.000	0.000	0.717	373.20	23
		1	57	0.078	0.077	0.000	0.000	0.138	0.188		
		2	47	0.064	0.066	0.000	0.049	0.179	0.000		
		3	63	0.086	0.088	0.008	0.082	0.218	0.000		
		4	64	0.087	0.090	0.000	0.104	0.195	0.019		
		5	98	0.134	0.135	0.101	0.246	0.095	0.076		
		6	128	0.174	0.175	0.268	0.314	0.087	0.000		
		7	169	0.230	0.226	0.623	0.205	0.088	0.000		
28	SS12: mMMS - circle, diamond, cube	0	343	0.468	0.477	0.000	0.356	0.624	0.987	297.50	26
		1	194	0.265	0.266	0.348	0.373	0.270	0.013		
		2	196	0.267	0.257	0.652	0.271	0.105	0.000		

29	CC08: Living Status	Home	650	0.707	0.703	0.924	0.994	0.984	0.078	469.04	19
		Retirement Home	8	0.009	0.009	0.018	0.006	0.014	0.000		
		Nursing Home	224	0.244	0.248	0.000	0.000	0.000	0.827		
		Hospital	5	0.005	0.006	0.001	0.000	0.002	0.015		
		Rehabilitation Center	18	0.020	0.020	0.000	0.000	0.000	0.066		
		Other	14	0.015	0.015	0.057	0.000	0.000	0.013		
30	Periods since entered nursing home RECODE	0-4	131	0.585	0.566	1.000	1.000	0.945	0.425	-20.19	75
		5-9	68	0.304	0.319	0.000	0.000	0.000	0.433		
		10-14	20	0.089	0.092	0.000	0.000	0.035	0.116		
		15-19	4	0.018	0.019	0.000	0.000	0.000	0.025		
		20+	1	0.004	0.004	0.000	0.000	0.019	0.000		
31	NN01: Patient Trouble With Chores	None	67	0.073	0.074	0.134	0.199	0.005	0.000	375.41	22
		Some	262	0.285	0.289	0.669	0.545	0.109	0.000		
		A Lot	590	0.642	0.637	0.196	0.256	0.886	1.000		
32	NN02: Patient Trouble Handling Money	None	92	0.100	0.103	0.369	0.124	0.000	0.000	425.67	21
		Some	201	0.219	0.225	0.550	0.438	0.050	0.000		
		A Lot	626	0.681	0.672	0.081	0.438	0.950	1.000		
33	NN03: Patient Trouble Remembering Lists	None	10	0.011	0.011	0.039	0.002	0.010	0.000	117.54	34
		Some	113	0.123	0.126	0.289	0.286	0.008	0.000		
		A Lot	796	0.866	0.863	0.672	0.712	0.981	1.000		
34	NN04: Patient Trouble Around House	None	483	0.526	0.520	1.000	0.936	0.384	0.000	724.38	4
		Some	160	0.174	0.179	0.000	0.064	0.574	0.026		
		A Lot	275	0.300	0.301	0.000	0.000	0.042	0.974		
35	NN05: Patient Trouble Around Neighborhood	None	367	0.400	0.407	0.829	0.831	0.184	0.000	621.35	13
		Some	129	0.141	0.148	0.171	0.134	0.304	0.000		
		A Lot	422	0.460	0.445	0.000	0.035	0.512	1.000		
36	NN06: Patient Trouble Recognizing Place	None	469	0.510	0.524	0.951	0.866	0.495	0.000	637.06	12
		Some	148	0.161	0.167	0.049	0.124	0.449	0.023		
		A Lot	302	0.329	0.309	0.000	0.010	0.056	0.977		
37	NN07: Patient Trouble Remembering Things	None	25	0.027	0.028	0.089	0.035	0.006	0.000	136.78	33
		Some	160	0.174	0.174	0.315	0.411	0.062	0.000		
		A Lot	734	0.799	0.799	0.596	0.554	0.933	1.000		
38	NN08: Patient Dwell in the Past	None	620	0.676	0.676	0.601	0.565	0.521	0.956	50.60	41
		Some	155	0.169	0.169	0.222	0.203	0.272	0.012		
		A Lot	142	0.155	0.155	0.178	0.232	0.207	0.032		
39	NN09: Patient Eating	Eats Cleanly	561	0.610	0.585	1.000	0.907	0.625	0.022	564.63	15
		Eats Messy	197	0.214	0.222	0.000	0.093	0.375	0.331		
		Eats Solids	30	0.033	0.036	0.000	0.000	0.000	0.120		
		Has to be Fed	131	0.143	0.157	0.000	0.000	0.000	0.526		
40	NN10: Patient Dressing	Dress No Help	355	0.386	0.385	0.806	0.809	0.139	0.000	832.35	2
		Misses Details	167	0.182	0.185	0.194	0.181	0.384	0.000		
		Gets Mixed Up	117	0.127	0.132	0.000	0.010	0.477	0.000		
		Unable to Dress	280	0.305	0.298	0.000	0.000	0.000	1.000		
41	NN11: Patient Bladder and Bowel Control	Never Wets Bed	601	0.654	0.641	0.986	0.966	0.798	0.016	648.54	10
		Occasionally Wets	74	0.081	0.079	0.014	0.034	0.202	0.045		
		Frequently Wets	50	0.054	0.057	0.000	0.000	0.000	0.192		
		Incontinent	194	0.211	0.223	0.000	0.000	0.000	0.746		
42	RR01: Needs Reminders	No	30	0.033	0.033	0.084	0.072	0.000	0.000	64.23	38
		Occasionally	39	0.042	0.043	0.135	0.071	0.000	0.000		
		Frequently	849	0.925	0.923	0.781	0.858	1.000	1.000		
43	RR02: Needs Help to Remember	No	15	0.016	0.017	0.056	0.023	0.000	0.000	34.39	43
		Occasionally	32	0.035	0.035	0.117	0.051	0.000	0.000		
		Frequently	872	0.949	0.948	0.826	0.926	1.000	1.000		
44	RR03: Needs Help Finding Things	No	30	0.033	0.033	0.112	0.045	0.000	0.000	27.59	44
		Yes	889	0.967	0.967	0.888	0.955	1.000	1.000		
45	RR04: Needs Household Chores Done	No	203	0.221	0.233	0.532	0.553	0.000	0.000	315.43	25
		Yes	715	0.779	0.767	0.468	0.447	1.000	1.000		
46	RR05: Needs Watching When Awake	No	452	0.492	0.503	1.000	0.939	0.240	0.071	452.11	20
		Yes	467	0.508	0.497	0.000	0.061	0.760	0.929		

47	RR06: Needs to be Escorted When Outside	No	424	0.461	0.477	0.973	0.922	0.253	0.002	520.51	17
		Yes	495	0.539	0.523	0.027	0.078	0.747	0.998		
48	RR07: Needs to be Accompanied Bathing/Eating	No	514	0.559	0.583	1.000	1.000	0.561	0.000	684.86	7
		Yes	405	0.441	0.417	0.000	0.000	0.439	1.000		
49	RR08: Needs to be Dressed/Washed/Groomed	No	587	0.639	0.663	1.000	1.000	0.857	0.000	687.12	6
		Yes	332	0.361	0.337	0.000	0.000	0.143	1.000		
50	RR09: Needs to be Taken to Toilet	No	667	0.726	0.707	1.000	1.000	1.000	0.018	654.51	8
		Yes	252	0.274	0.293	0.000	0.000	0.000	0.982		
51	RR10: Needs to be Fed	No	774	0.842	0.821	1.000	1.000	1.000	0.400	349.86	24
		Yes	145	0.158	0.179	0.000	0.000	0.000	0.600		
52	RR11: Needs to be Turned/Moved/Transferred	No	798	0.868	0.857	1.000	1.000	1.000	0.520	267.60	29
		Yes	121	0.132	0.143	0.000	0.000	0.000	0.480		
53	RR12: Needs to Wear Diaper/Catheter	No	685	0.745	0.702	1.000	1.000	1.000	0.000	649.00	9
		Yes	234	0.255	0.298	0.000	0.000	0.000	1.000		
54	RR13: Needs to be Tube Fed	No	902	0.982	0.981	1.000	1.000	1.000	0.937	13.90	54
		Yes	17	0.018	0.019	0.000	0.000	0.000	0.063		
55	RR14: Dependence Level	Level 0	11	0.012	0.012	0.049	0.010	0.000	0.000	881.54	1
		Level 1	12	0.013	0.013	0.051	0.012	0.000	0.000		
		Level 2	330	0.359	0.354	0.761	0.808	0.059	0.000		
		Level 3	227	0.247	0.233	0.136	0.169	0.615	0.000		
		Level 4	101	0.110	0.104	0.003	0.000	0.326	0.052		
		Level 5	238	0.259	0.283	0.000	0.000	0.000	0.948		
56	RR15: Equivalent Institutional Service	Limited Home Care	201	0.219	0.228	0.631	0.439	0.000	0.000	746.19	3
		Adult Home	364	0.396	0.420	0.365	0.561	0.803	0.000		
		Health Related Facility	354	0.385	0.352	0.004	0.000	0.197	1.000		
57	Neurologist Estimation of Illness (No. of INTERVALS)	0-4	47	0.044	0.040	0.010	0.173	0.000	0.000	575.58	14
		5-9	225	0.210	0.195	0.111	0.583	0.175	0.000		
		10-14	312	0.291	0.285	0.344	0.245	0.578	0.039		
		15-19	256	0.239	0.248	0.353	0.000	0.247	0.357		
		20+	233	0.217	0.232	0.182	0.000	0.000	0.604		
58	KK16: Had Seizure?	No	851	0.978	0.978	1.000	0.983	0.971	0.966	-16.03	67
		Yes	19	0.022	0.022	0.000	0.017	0.029	0.034		
59	KK17: First Time Seizure?	No	10	0.556	0.549	0.637	0.682	0.675	0.374	-7.76	62
		Yes	8	0.444	0.451	0.363	0.318	0.325	0.626		
60	Periods since seizures began RECODE	0-4	40	0.494	0.483	0.923	0.635	0.358	0.449	-23.27	77
		5-9	14	0.173	0.175	0.077	0.000	0.345	0.130		
		9-14	9	0.111	0.115	0.000	0.014	0.000	0.225		
		15+	18	0.222	0.227	0.000	0.351	0.297	0.196		
61	KK19: How Frequently Do Seizures Occur?	One per Month	9	0.563	0.543	0.658	0.744	0.344	0.560	-17.94	68
		2-5 per Month	3	0.188	0.170	0.342	0.256	0.000	0.197		
		6-10 per Month	2	0.125	0.165	0.000	0.000	0.610	0.000		
		>10 per Month	2	0.125	0.122	0.000	0.000	0.046	0.243		
62	FF10: Adequate Sight?	No	49	0.133	0.132	0.020	0.091	0.090	0.393	3.23	57
		Yes	319	0.867	0.868	0.980	0.909	0.910	0.607		
63	JJ17A: Beer/Week: RECODE	0	812	0.947	0.947	0.947	0.890	0.936	1.000	-3.78	59
		1-7	39	0.046	0.046	0.053	0.079	0.064	0.000		
		>7	6	0.007	0.007	0.000	0.031	0.000	0.000		
64	JJ17B: Wine/Week: RECODE	0	763	0.894	0.895	0.652	0.920	0.944	1.000	53.22	40
		1-7	73	0.086	0.085	0.265	0.080	0.046	0.000		
		>7	17	0.020	0.020	0.083	0.000	0.010	0.000		
65	JJ17C: Hard Liquor/Week: RECODE	0	770	0.902	0.901	0.781	0.855	0.921	1.000	19.26	50
		1-7	55	0.064	0.064	0.125	0.125	0.039	0.000		
		>7	29	0.034	0.034	0.093	0.020	0.040	0.000		
66	JJ17D: All Alcoholic Drinks/Week: RECODE	0	679	0.790	0.790	0.596	0.682	0.792	1.000	76.82	36
		1-7	115	0.134	0.134	0.207	0.244	0.138	0.000		
		>7	65	0.076	0.076	0.197	0.075	0.070	0.000		
67	EF1: Hypertension	No	778	0.996	0.996	1.000	0.980	1.000	1.000	-15.45	66
		Yes	3	0.004	0.004	0.000	0.020	0.000	0.000		
68	EF2: Diabetes	No	781	0.999	0.999	1.000	1.000	1.000	0.996	-18.30	70

| |

|Yes

|

1

0.001

0.001

0.000

0.000

0.000

0.004

|

69	EF3: Myocardial Infarction	No	781	0.999	0.999	0.994	1.000	1.000	1.000	1.000	-18.21	69
		Yes	1	0.001	0.001	0.006	0.000	0.000	0.000	0.000		
70	EF4: Heart Disease	No	773	0.988	0.988	0.991	0.977	0.991	0.992	0.992	-18.73	71
		Yes	9	0.012	0.012	0.009	0.023	0.009	0.008	0.008		
71	EF5: Stroke	No	585	0.992	0.992	0.964	1.000	1.000	0.993	0.993	-13.16	64
		Yes	5	0.008	0.008	0.036	0.000	0.000	0.007	0.007		
72	EF5A: TIA	No	28	0.824	0.842	1.000	0.657	0.000	1.000	1.000	6.52	56
		Yes	6	0.176	0.158	0.000	0.343	1.000	0.000	0.000		
73	EF6: Surgery	No	749	0.960	0.960	0.964	0.974	0.960	0.950	0.950	-18.98	72
		Yes	31	0.040	0.040	0.036	0.026	0.040	0.050	0.050		
74	EF7: Admission to Hospital	No	693	0.884	0.884	0.932	0.922	0.896	0.823	0.823	-9.93	63
		Yes	91	0.116	0.116	0.068	0.078	0.104	0.177	0.177		
75	EF8: Treatment	No	662	0.847	0.847	0.901	0.962	0.913	0.695	0.695	22.02	48
		Yes	120	0.153	0.153	0.099	0.038	0.087	0.305	0.305		
76	NNTOT: Total dependence scale score: RECODE	0-5	74	0.081	0.083	0.255	0.136	0.000	0.000	0.000	708.70	5
		6-10	256	0.280	0.288	0.676	0.549	0.092	0.000	0.000		
		11-15	255	0.279	0.293	0.068	0.314	0.723	0.034	0.034		
		>15	330	0.361	0.336	0.000	0.000	0.185	0.966	0.966		
77	DELUSION: Delusions	Absent	574	0.627	0.634	0.910	0.528	0.159	0.966	0.966	175.80	31
		Present	341	0.373	0.366	0.090	0.472	0.841	0.034	0.034		
78	HALLUCIN: Hallucinations	Absent	792	0.866	0.865	1.000	0.894	0.718	0.885	0.885	35.13	42
		Present	123	0.134	0.135	0.000	0.106	0.282	0.115	0.115		
79	ILLUSION: Illusions	Absent	879	0.961	0.961	1.000	0.948	0.908	0.992	0.992	-1.22	58
		Present	36	0.039	0.039	0.000	0.052	0.092	0.008	0.008		
80	EPSXS: Moderate extrapyramidal symptoms	Absent	436	0.740	0.740	0.980	0.879	0.775	0.040	0.040	151.61	32
		Present	153	0.260	0.260	0.020	0.121	0.225	0.960	0.960		
Total			65,988	80.000	80.000	80.000	80.000	80.000	80.000	80.000	16,884.59	

Web Table A4: Response Probabilities by Pure Type for the 3-Dimensional Model of AD Progression in the Predictors 1 Data, Females

j	Variable	Response	No. of		Pure Type				ΔBIC _j 0-3	Rank	
			Obs.	Observed	Predicted	I	II	III			IV
1	Prospective 6-month survival	Died	92	0.055	0.055	0.004	0.001	0.094	0.099	27.83	51
		Survived	1,581	0.945	0.945	0.996	0.999	0.906	0.901		
2	Retrospective 6-month survival	Dead	76	0.047	0.047	0.000	0.002	0.081	0.078	20.77	54
		Alive	1,533	0.953	0.953	1.000	0.998	0.919	0.922		
3	Age-group at Intake:	1=<65	303	0.172	0.184	0.102	0.272	0.000	0.234	799.11	16
		2=65-69	262	0.149	0.159	0.208	0.181	0.000	0.188		
		2=70-74	389	0.221	0.237	0.289	0.250	0.000	0.300		
		2=75-79	427	0.243	0.259	0.402	0.297	0.000	0.277		
		2=80-84	172	0.098	0.074	0.000	0.000	0.456	0.000		
		6=85+	205	0.117	0.088	0.000	0.000	0.544	0.000		
4	B04: Ethnic Group	White	1,611	0.916	0.916	0.861	0.895	1.000	0.919	11.78	56
		Black	131	0.075	0.075	0.139	0.093	0.000	0.066		
		Other	16	0.009	0.009	0.000	0.012	0.000	0.015		
5	B05: Hispanic	Not Hispanic	1,679	0.955	0.955	0.980	0.947	0.900	0.972	-2.06	62
		Mexican/Mex-Amer/Chicano	13	0.007	0.007	0.000	0.022	0.000	0.004		
		Puerto Rican	16	0.009	0.009	0.020	0.021	0.000	0.000		
		Cuban	0	0.000	0.000	0.000	0.000	0.000	0.000		
		Dominican	21	0.012	0.012	0.000	0.010	0.000	0.024		
6	B06: Highest Grade	Other	29	0.016	0.016	0.000	0.000	0.100	0.000		
		0-8	235	0.134	0.134	0.174	0.152	0.000	0.158	108.34	38
		9-12	917	0.522	0.522	0.392	0.402	1.000	0.465		
		>12	606	0.345	0.344	0.434	0.446	0.000	0.377		
7	B07: Birth Place	United States	1,554	0.888	0.892	0.979	0.969	0.466	0.976		
		Puerto Rico	16	0.009	0.009	0.021	0.021	0.000	0.000		
		Dominican Rep.	21	0.012	0.012	0.000	0.010	0.000	0.024		
		Other	159	0.091	0.086	0.000	0.000	0.534	0.000		
8	B08: State of Birth	New York	457	0.294	0.297	0.464	0.334	0.000	0.300	73.38	43
		New Jersey	85	0.055	0.055	0.000	0.107	0.000	0.062		
		Other	1,012	0.651	0.648	0.536	0.559	1.000	0.638		
9	B09: Citizen of US	No	24	0.014	0.014	0.018	0.027	0.000	0.010	-13.26	66
		Yes	1,672	0.986	0.986	0.982	0.973	1.000	0.990		
10	B12: Predominant Language	English	1,721	0.979	0.979	0.989	0.968	1.000	0.973	-9.68	65
		Spanish	37	0.021	0.021	0.011	0.032	0.000	0.027		
		Other	0	0.000	0.000	0.000	0.000	0.000	0.000		
11	B13: How Well Is English Spoken	Very Well	1,733	0.986	0.986	0.932	0.990	1.000	1.000	0.49	60
		Well	25	0.014	0.014	0.068	0.010	0.000	0.000		
		Not Well	0	0.000	0.000	0.000	0.000	0.000	0.000		
12	B14: Occupation	Housewife	298	0.170	0.170	0.138	0.243	0.075	0.174	183.15	35
		Housewife and Other	68	0.039	0.038	0.023	0.042	0.073	0.029		
		Unskilled/Semi_Skilled	236	0.134	0.136	0.127	0.153	0.000	0.183		
		Skilled Trade	84	0.048	0.048	0.072	0.041	0.063	0.036		
		Clerical/Office	640	0.364	0.364	0.330	0.315	0.404	0.395		
		Manager Bus./Govt.	116	0.066	0.062	0.000	0.000	0.385	0.000		
		Professional	287	0.163	0.165	0.252	0.206	0.000	0.168		
		Other	29	0.016	0.017	0.058	0.000	0.000	0.017		
13	XX01: Cause of Death	Pneumonia	12	0.250	0.246	0.000	0.391	0.512	0.101	-44.80	79
		Other Infection	5	0.104	0.111	0.000	0.000	0.000	0.190		
		Cardiovascular	12	0.250	0.237	1.000	0.000	0.259	0.239		
		Cerebrovascular	1	0.021	0.022	0.000	0.000	0.000	0.038		
		Malignancy	6	0.125	0.126	0.000	0.609	0.000	0.096		
		Other	12	0.250	0.259	0.000	0.000	0.229	0.336		

14	XX03: Autopsy	None	37	0.607	0.600	0.528	0.297	1.000	0.488	-14.90	68
		General w/o brain	0	0.000	0.000	0.000	0.000	0.000	0.000		
		General with brain	5	0.082	0.084	0.000	0.134	0.000	0.116		
		Brain Only	19	0.311	0.316	0.472	0.568	0.000	0.396		
15	Periods since first time sought help RECODE	0-4	300	0.194	0.185	0.659	0.177	0.209	0.000	927.81	10
		5-9	466	0.302	0.301	0.341	0.517	0.458	0.084		
		10-14	382	0.247	0.253	0.000	0.306	0.334	0.285		
		15-19	241	0.156	0.159	0.000	0.000	0.000	0.384		
		20+	155	0.100	0.102	0.000	0.000	0.000	0.247		
16	PP43: Wandered Away	No	1,255	0.893	0.893	1.000	0.854	0.901	0.868	21.92	53
		Yes	150	0.107	0.107	0.000	0.146	0.099	0.132		
17	PP44: Verbal Outbursts	No	1,038	0.739	0.739	0.991	0.759	0.702	0.623	86.31	41
		Yes	367	0.261	0.261	0.009	0.241	0.298	0.377		
18	PP45: Physical Threats	No	1,175	0.836	0.837	1.000	0.890	0.803	0.736	63.50	45
		Threatening	100	0.071	0.071	0.000	0.099	0.080	0.080		
		Physical	130	0.093	0.092	0.000	0.011	0.117	0.184		
19	PP50: Difficulty Sleeping	No	1,107	0.788	0.788	0.788	0.772	0.797	0.797	-21.37	74
		Yes	297	0.212	0.212	0.212	0.228	0.203	0.203		
20	PP51: How Much Sleep?	Slight	153	0.520	0.521	0.444	0.374	0.620	0.626	-24.46	75
		2 hr	91	0.310	0.310	0.212	0.458	0.345	0.228		
		< 2 hr	12	0.041	0.041	0.000	0.009	0.035	0.089		
		Excessive	38	0.129	0.128	0.343	0.160	0.000	0.057		
21	Overall mMMS GATE	No answers	660	0.375	0.384	0.170	0.114	0.091	0.769	416.21	29
		Any answers	1,098	0.625	0.616	0.830	0.886	0.909	0.231		
22	SS01: mMMS RECODE	0-19	331	0.304	0.273	0.000	0.042	0.000	1.000	825.18	14
		20-29	275	0.253	0.267	0.067	0.591	0.322	0.000		
		30-39	353	0.324	0.338	0.465	0.351	0.619	0.000		
		40+	129	0.119	0.122	0.468	0.017	0.059	0.000		
23	SS02: mMMS - Orientation: RECODE	0	242	0.220	0.213	0.000	0.000	0.000	0.813	599.84	19
		1-5	605	0.551	0.556	0.284	0.859	0.862	0.187		
		>5	252	0.229	0.231	0.716	0.141	0.138	0.000		
24	SS03: mMMS - Registration	0	135	0.123	0.125	0.000	0.000	0.000	0.478	311.43	30
		1	75	0.068	0.069	0.000	0.073	0.002	0.173		
		2	121	0.110	0.111	0.027	0.168	0.069	0.141		
		3	768	0.699	0.695	0.973	0.759	0.929	0.208		
25	SS07: mMMS - serial 7s, WORLD, and Add coins	0	547	0.499	0.477	0.095	0.608	0.000	1.000	466.02	27
		1	142	0.130	0.134	0.142	0.218	0.165	0.000		
		2	83	0.076	0.079	0.104	0.076	0.159	0.000		
		3	65	0.059	0.062	0.091	0.038	0.150	0.000		
		4	55	0.050	0.052	0.074	0.021	0.147	0.000		
		5	72	0.066	0.069	0.157	0.010	0.158	0.000		
		6	77	0.070	0.074	0.188	0.023	0.128	0.000		
		7	55	0.050	0.053	0.149	0.005	0.094	0.000		
26	SS09: mMMS - Recall 3-word memory	0	948	0.863	0.861	0.742	0.906	0.738	1.000	28.68	50
		1	121	0.110	0.111	0.244	0.074	0.169	0.000		
		2	27	0.025	0.025	0.013	0.020	0.079	0.000		
		3	3	0.003	0.003	0.000	0.000	0.014	0.000		
27	SS11: mMMS - repeat 2 phrases, 3-stage command, read & obey	0	130	0.119	0.114	0.000	0.000	0.000	0.437	552.55	22
		1	77	0.071	0.069	0.000	0.028	0.000	0.228		
		2	76	0.070	0.070	0.000	0.086	0.000	0.161		
		3	76	0.070	0.069	0.011	0.074	0.028	0.144		
		4	118	0.108	0.112	0.047	0.236	0.091	0.030		
		5	177	0.162	0.164	0.172	0.226	0.272	0.000		
		6	206	0.189	0.190	0.245	0.220	0.332	0.000		
		7	232	0.212	0.213	0.524	0.130	0.277	0.000		
28	SS12: mMMS - circle, diamond, cube	0	639	0.586	0.578	0.220	0.735	0.170	1.000	293.41	31
		1	307	0.282	0.287	0.515	0.213	0.527	0.000		
		2	144	0.132	0.135	0.265	0.052	0.303	0.000		

29	CC08: Living Status	Home	841	0.593	0.573	0.999	0.934	0.180	0.289	549.49	23
		Retirement Home	30	0.021	0.020	0.000	0.055	0.022	0.004		
		Nursing Home	468	0.330	0.348	0.000	0.000	0.663	0.622		
		Hospital	2	0.001	0.001	0.001	0.000	0.000	0.003		
		Rehabilitation Center	44	0.031	0.033	0.000	0.000	0.036	0.070		
	Other	33	0.023	0.024	0.000	0.011	0.099	0.013			
30	Periods since entered nursing home RECODE	0-4	226	0.470	0.447	0.863	1.000	0.414	0.335	8.62	57
		5-9	156	0.324	0.338	0.137	0.000	0.339	0.412		
		10-14	76	0.158	0.165	0.000	0.000	0.158	0.206		
		15-19	20	0.042	0.044	0.000	0.000	0.068	0.044		
		20+	3	0.006	0.007	0.000	0.000	0.022	0.002		
31	NN01: Patient Trouble With Chores	None	85	0.060	0.061	0.216	0.067	0.026	0.000	552.99	21
		Some	319	0.225	0.228	0.737	0.278	0.131	0.000		
		A Lot	1,012	0.715	0.712	0.048	0.655	0.843	1.000		
32	NN02: Patient Trouble Handling Money	None	123	0.087	0.089	0.360	0.072	0.035	0.000	532.52	24
		Some	238	0.168	0.173	0.526	0.174	0.194	0.000		
		A Lot	1,055	0.745	0.738	0.113	0.754	0.771	1.000		
33	NN03: Patient Trouble Remembering Lists	None	13	0.009	0.009	0.046	0.005	0.000	0.000	198.59	33
		Some	128	0.090	0.092	0.411	0.038	0.055	0.000		
		A Lot	1,275	0.900	0.899	0.543	0.957	0.945	1.000		
34	NN04: Patient Trouble Around House	None	675	0.477	0.473	1.000	0.702	0.623	0.000	994.48	7
		Some	227	0.160	0.165	0.000	0.298	0.262	0.101		
		A Lot	514	0.363	0.362	0.000	0.000	0.115	0.899		
35	NN05: Patient Trouble Around Neighborhood	None	332	0.234	0.236	0.868	0.282	0.038	0.000	863.88	13
		Some	215	0.152	0.161	0.132	0.300	0.328	0.000		
		A Lot	869	0.614	0.603	0.000	0.419	0.634	1.000		
36	NN06: Patient Trouble Recognizing Place	None	636	0.449	0.447	0.978	0.715	0.467	0.000	920.73	11
		Some	219	0.155	0.157	0.022	0.285	0.300	0.065		
		A Lot	561	0.396	0.396	0.000	0.000	0.233	0.935		
37	NN07: Patient Trouble Remembering Things	None	25	0.018	0.018	0.073	0.018	0.000	0.000	179.77	36
		Some	158	0.112	0.112	0.373	0.128	0.066	0.000		
		A Lot	1,233	0.871	0.871	0.554	0.855	0.934	1.000		
38	NN08: Patient Dwell in the Past	None	950	0.671	0.673	0.587	0.517	0.566	0.873	70.11	44
		Some	256	0.181	0.180	0.309	0.277	0.224	0.031		
		A Lot	209	0.148	0.147	0.105	0.207	0.210	0.096		
39	NN09: Patient Eating	Eats Cleanly	892	0.629	0.601	0.995	0.834	0.980	0.087	782.06	17
		Eats Messy	215	0.152	0.159	0.005	0.166	0.020	0.284		
		Eats Solids	48	0.034	0.037	0.000	0.000	0.000	0.097		
		Has to be Fed	263	0.185	0.203	0.000	0.000	0.000	0.532		
40	NN10: Patient Dressing	Dress No Help	446	0.315	0.312	0.886	0.388	0.296	0.003	1145.59	2
		Misses Details	234	0.165	0.169	0.114	0.280	0.428	0.000		
		Gets Mixed Up	208	0.147	0.149	0.000	0.332	0.209	0.059		
		Unable to Dress	530	0.374	0.370	0.000	0.000	0.068	0.938		
41	NN11: Patient Bladder and Bowel Control	Never Wets Bed	806	0.568	0.551	1.000	0.940	0.657	0.018	930.83	9
		Occasionally Wets	155	0.109	0.112	0.000	0.060	0.225	0.152		
		Frequently Wets	131	0.092	0.096	0.000	0.000	0.118	0.201		
		Incontinent	326	0.230	0.241	0.000	0.000	0.000	0.630		
42	RR01: Needs Reminders	No	42	0.030	0.030	0.144	0.018	0.000	0.000	95.17	39
		Occasionally	32	0.023	0.023	0.107	0.016	0.000	0.000		
		Frequently	1,344	0.948	0.947	0.750	0.966	1.000	1.000		
43	RR02: Needs Help to Remember	No	23	0.016	0.016	0.061	0.020	0.000	0.000	76.96	42
		Occasionally	39	0.028	0.028	0.158	0.000	0.000	0.000		
		Frequently	1,356	0.956	0.956	0.781	0.980	1.000	1.000		
44	RR03: Needs Help Finding Things	No	39	0.028	0.028	0.122	0.023	0.000	0.000	40.99	46
		Yes	1,379	0.972	0.972	0.878	0.977	1.000	1.000		
45	RR04: Needs Household Chores Done	No	206	0.145	0.157	0.785	0.072	0.000	0.000	504.90	26
		Yes	1,212	0.855	0.843	0.215	0.928	1.000	1.000		
46	RR05: Needs Watching When Awake	No	508	0.358	0.359	1.000	0.446	0.180	0.084	529.54	25
		Yes	911	0.642	0.641	0.000	0.554	0.820	0.916		

47	RR06: Needs to be Escorted When Outside	No Yes	346 1,072	0.244 0.756	0.251 0.749	0.972 0.028	0.292 0.708	0.006 0.994	0.000 1.000	673.48	18
48	RR07: Needs to be Accompanied Bathing/Eating	No Yes	578 841	0.407 0.593	0.424 0.576	1.000 0.000	0.811 0.189	0.157 0.843	0.000 1.000	873.07	12
49	RR08: Needs to be Dressed/Washed/Groomed	No Yes	745 674	0.525 0.475	0.558 0.442	1.000 0.000	1.000 0.000	0.645 0.355	0.000 1.000	996.30	5
50	RR09: Needs to be Taken to Toilet	No Yes	891 528	0.628 0.372	0.613 0.387	1.000 0.000	1.000 0.000	0.942 0.058	0.014 0.986	994.54	6
51	RR10: Needs to be Fed	No Yes	1,123 296	0.791 0.209	0.771 0.229	1.000 0.000	1.000 0.000	1.000 0.000	0.401 0.599	569.43	20
52	RR11: Needs to be Turned/Moved/Transferred	No Yes	1,171 248	0.825 0.175	0.811 0.189	1.000 0.000	1.000 0.000	1.000 0.000	0.505 0.495	465.84	28
53	RR12: Needs to Wear Diaper/Catheter	No Yes	998 421	0.703 0.297	0.679 0.321	1.000 0.000	1.000 0.000	1.000 0.000	0.162 0.838	803.70	15
54	RR13: Needs to be Tube Fed	No Yes	1,389 30	0.979 0.021	0.979 0.021	1.000 0.000	1.000 0.000	1.000 0.000	0.944 0.056	29.76	49
55	RR14: Dependence Level	Level 0 Level 1 Level 2 Level 3 Level 4 Level 5	14 12 271 420 260 442	0.010 0.008 0.191 0.296 0.183 0.311	0.010 0.009 0.195 0.303 0.183 0.301	0.032 0.044 0.854 0.070 0.000 0.000	0.010 0.003 0.169 0.662 0.155 0.000	0.000 0.000 0.000 0.645 0.355 0.000	0.005 0.000 0.000 0.000 0.210 0.786	1342.45	1
56	RR15: Equivalent Institutional Service	Limited Home Care Adult Home Health Related Facility	215 442 758	0.152 0.312 0.536	0.147 0.320 0.533	0.699 0.301 0.000	0.091 0.874 0.035	0.000 0.125 0.875	0.000 0.012 0.988	1070.89	3
57	Neurologist Estimation of Illness (No. of INTERVALS)	0-4 5-9 10-14 15-19 20+	68 380 485 381 334	0.041 0.231 0.294 0.231 0.203	0.039 0.221 0.299 0.237 0.205	0.159 0.666 0.175 0.000 0.000	0.016 0.239 0.565 0.181 0.000	0.043 0.259 0.474 0.224 0.000	0.000 0.000 0.103 0.383 0.514	997.37	4
58	KK16: Had Seizure?	No Yes	1,308 43	0.968 0.032	0.968 0.032	0.986 0.014	0.984 0.016	1.000 0.000	0.933 0.067	1.51	58
59	KK17: First Time Seizure?	No Yes	22 19	0.537 0.463	0.546 0.454	0.680 0.320	0.367 0.633	0.000 1.000	0.632 0.368	-6.74	63
60	Periods since seizures began RECODE	0-4 5-9 9-14 15+	95 44 20 7	0.572 0.265 0.120 0.042	0.572 0.266 0.121 0.042	0.874 0.126 0.000 0.000	0.700 0.212 0.088 0.000	1.000 0.000 0.000 0.000	0.484 0.311 0.147 0.059	-30.86	77
61	KK19: How Frequently Do Seizures Occur?	One per Month 2-5 per Month 6-10 per Month >10 per Month	26 2 1 1	0.867 0.067 0.033 0.033	0.872 0.068 0.029 0.030	1.000 0.000 0.000 0.000	0.680 0.000 0.000 0.320	0.397 0.000 0.603 0.000	0.916 0.084 0.000 0.000	-24.68	76
62	FF10: Adequate Sight?	No Yes	53 408	0.115 0.885	0.115 0.885	0.175 0.825	0.034 0.966	0.083 0.917	0.194 0.806	-8.56	64
63	JJ17A: Beer/Week: RECODE	0 1-7 >7	1,341 5 1	0.996 0.004 0.001	0.996 0.004 0.001	0.987 0.013 0.000	0.992 0.005 0.003	1.000 0.000 0.000	1.000 0.000 0.000	-33.12	78
64	JJ17B: Wine/Week: RECODE	0 1-7 >7	1,284 60 3	0.953 0.045 0.002	0.953 0.044 0.002	0.894 0.106 0.000	0.896 0.096 0.008	1.000 0.000 0.000	1.000 0.000 0.000	15.31	55
65	JJ17C: Hard Liquor/Week: RECODE	0 1-7 >7	1,288 52 7	0.956 0.039 0.005	0.956 0.039 0.005	0.904 0.096 0.000	0.899 0.082 0.019	1.000 0.000 0.000	1.000 0.000 0.000	35.15	48
66	JJ17D: All Alcoholic Drinks/Week: RECODE	0 1-7 >7	1,238 102 16	0.913 0.075 0.012	0.912 0.076 0.012	0.830 0.157 0.012	0.788 0.176 0.036	1.000 0.000 0.000	1.000 0.000 0.000	87.00	40
67	EF1: Hypertension	No Yes	1,217 7	0.994 0.006	0.994 0.006	1.000 0.000	0.990 0.010	0.982 0.018	1.000 0.000	-14.85	67
68	EF2: Diabetes	No	1,226	0.998	0.998	1.000	1.000	0.990	1.000	-16.61	71

| |

|Yes

|

2

0.002

0.002

0.000

0.000

0.010

0.000

|

69	EF4: Heart Disease	No	1,216	0.991	0.991	0.995	1.000	0.980	0.989	-15.79	69
		Yes	11	0.009	0.009	0.005	0.000	0.020	0.011		
70	EF5: Stroke	No	871	0.992	0.992	1.000	1.000	0.991	0.986	-16.33	70
		Yes	7	0.008	0.008	0.000	0.000	0.009	0.014		
71	EF5A: TIA	No	41	0.891	0.919	1.000	0.000	1.000	1.000	0.19	61
		Yes	5	0.109	0.081	0.000	1.000	0.000	0.000		
72	EF6: Surgery	No	1,185	0.967	0.967	0.971	0.946	0.989	0.971	-19.47	73
		Yes	40	0.033	0.033	0.029	0.054	0.011	0.029		
73	EF7: Admission to Hospital	No	1,107	0.899	0.899	0.938	0.917	0.886	0.879	-17.16	72
		Yes	125	0.101	0.101	0.062	0.083	0.114	0.121		
74	EF8: Treatment	No	1,046	0.858	0.858	0.959	0.944	0.856	0.770	21.96	52
		Yes	173	0.142	0.142	0.041	0.056	0.144	0.230		
75	NNTOT: Total dependence scale score: RECODE	0-5	108	0.076	0.077	0.348	0.058	0.000	0.000	973.40	8
		6-10	358	0.253	0.258	0.609	0.318	0.380	0.000		
		11-15	410	0.290	0.296	0.044	0.590	0.511	0.105		
		>15	538	0.380	0.369	0.000	0.034	0.109	0.895		
76	DELUSION: Delusions	Absent	841	0.603	0.607	0.736	0.277	0.498	0.839	119.70	37
		Present	554	0.397	0.393	0.264	0.723	0.502	0.161		
77	HALLUCIN: Hallucinations	Absent	1,254	0.899	0.899	0.998	0.757	0.949	0.934	36.68	47
		Present	141	0.101	0.101	0.002	0.243	0.051	0.066		
78	ILLUSION: Illusions	Absent	1,352	0.970	0.970	1.000	0.928	1.000	0.973	1.08	59
		Present	42	0.030	0.030	0.000	0.072	0.000	0.027		
79	EPSXS: Moderate extrapyramidal symptoms	Absent	648	0.695	0.693	1.000	0.858	0.564	0.240	189.81	34
		Present	285	0.305	0.307	0.000	0.142	0.436	0.760		
Total			100,235	79.000	79.000	79.000	79.000	79.000	79.000	24,981.80	

Web Table A5: Model Selection Criteria for Sex-Specific Validation of 3-D Model Using the Predictors 2 Data

Model	I	J	M	M-J	df	N*	N**	ln(N*)	ln(N**)	Log-Likelihood	Model Selection Criterion				Deviation from Minimum Value of Criterion			
											AIC	BIC1	BIC2	CAIC	ΔAIC	ΔBIC1	ΔBIC2	ΔCAIC
Males																		
F1	106	80	224	144	318	563	422	6.33	6.04	-29,826.86	60,289.72	61,667.73	61,575.95	61,985.73	5,443.37	2,933.85	2,933.85	2,357.85
F2	106	80	224	144	894	563	508	6.33	6.23	-26,535.93	54,859.87	58,733.88	58,642.11	59,627.88	13.51	0.00	0.00	0.00
F3	106	80	224	144	984	563	651	6.33	6.48	-26,439.18	54,846.36	59,110.37	59,252.82	60,094.37	0.00	376.49	610.72	466.49
Females																		
F1	148	79	228	149	444	728	401	6.59	5.99	-40,215.92	81,319.84	83,358.20	83,093.37	83,802.20	5,642.40	2,906.22	2,906.22	2,310.22
F2	148	79	228	149	1,040	728	565	6.59	6.34	-36,798.72	75,677.45	80,451.98	80,187.14	81,491.98	0.00	0.00	0.00	0.00
F3	148	79	228	149	1,130	728	704	6.59	6.56	-36,733.72	75,727.45	80,915.16	80,877.00	82,045.16	50.00	463.18	689.86	553.18

Notes

$df = I \times D + K \times (M - J) + T \times D \times K / 2$, where $D = 3$, $K = 4$, and $T \equiv \max(t) = 15$, is the time index for the last follow-up examination.

N^* is the df -weighted geometric mean number of responses to the J variables.

N^{**} is the geometric mean number of additive terms in the formulas for the df diagonal elements of the $df \times df$ Hessian matrix of the Log-Likelihood function.

AIC = $-2 \times \text{Log-Likelihood} + 2 \times df$; see Akaike (1973).

BIC1 = $-2 \times \text{Log-Likelihood} + df \times \ln(N^*)$; see Schwarz (1978).

BIC2 = $-2 \times \text{Log-Likelihood} + df \times \ln(N^{**})$; see Raftery (1995).

CAIC = $-2 \times \text{Log-Likelihood} + df \times \ln(N^*) + df$; CAIC is a mnemonic for "consistent" AIC – see Bozdogan (1987).

For each selection criterion, the best model has the minimum value, shown in boldface. The BIC1 and BIC2 selections were supported for females by the identical selections under AIC and CAIC, and for males by the CAIC selection. However, the ΔAIC value favoring F3 over F2 for males was more than an order of magnitude smaller than the complementary ΔAIC value favoring F2 over F3, indicating that strength of evidence for the AIC selection was relatively very weak.

Web Table A6: Transition Matrices, Probabilities of Death, and 10-Year Life-Table Analysis in the 3-D Model of AD Progression in the Predictors 1 Data, Type I Males

Exam #	Type	Inputs to Equation (4)				Alternative Inputs to Equation (4)				6-Month Probabilities of Death (from Table 1)																																																																																																																																		
		V-matrices				U-matrices				Type	I	II	III	IV																																																																																																																														
		I	II	III	IV	I	II	III	IV	Value	0.0091	0.0179	0.0383	0.1518																																																																																																																														
1	I	1.0000	0.0000	0.0000	0.0000	1.0000	0.0000	0.0000	0.0000	<hr/> Template for 10-Year Life-Table Analysis <hr/> <table border="1"> <thead> <tr> <th colspan="5">Initial GoM Scores (at Exam 1)</th> </tr> <tr> <th>Type</th> <th>I</th> <th>II</th> <th>III</th> <th>IV</th> </tr> <tr> <th>Value</th> <td>1.000</td> <td>0.000</td> <td>0.000</td> <td>0.000</td> </tr> </thead> <tbody> <tr> <th colspan="5">GoM Scores by Exam (via Eqn. 4)</th> </tr> <tr> <th>Exam #</th> <th>I</th> <th>II</th> <th>III</th> <th>IV</th> </tr> <tr> <td>1</td> <td>1.0000</td> <td>0.0000</td> <td>0.0000</td> <td>0.0000</td> </tr> <tr> <td>2</td> <td>1.0000</td> <td>0.0000</td> <td>0.0000</td> <td>0.0000</td> </tr> <tr> <td>3</td> <td>1.0000</td> <td>0.0000</td> <td>0.0000</td> <td>0.0000</td> </tr> <tr> <td>4</td> <td>1.0000</td> <td>0.0000</td> <td>0.0000</td> <td>0.0000</td> </tr> <tr> <td>5</td> <td>1.0000</td> <td>0.0000</td> <td>0.0000</td> <td>0.0000</td> </tr> <tr> <td>6</td> <td>1.0000</td> <td>0.0000</td> <td>0.0000</td> <td>0.0000</td> </tr> <tr> <td>7</td> <td>1.0000</td> <td>0.0000</td> <td>0.0000</td> <td>0.0000</td> </tr> <tr> <td>8</td> <td>1.0000</td> <td>0.0000</td> <td>0.0000</td> <td>0.0000</td> </tr> <tr> <td>9</td> <td>1.0000</td> <td>0.0000</td> <td>0.0000</td> <td>0.0000</td> </tr> <tr> <td>10</td> <td>0.9743</td> <td>0.0000</td> <td>0.0257</td> <td>0.0000</td> </tr> <tr> <td>11</td> <td>0.9743</td> <td>0.0000</td> <td>0.0239</td> <td>0.0018</td> </tr> <tr> <td>12</td> <td>0.6508</td> <td>0.0000</td> <td>0.3299</td> <td>0.0193</td> </tr> <tr> <td>13</td> <td>0.6508</td> <td>0.0000</td> <td>0.3299</td> <td>0.0193</td> </tr> <tr> <td>14</td> <td>0.6508</td> <td>0.0000</td> <td>0.2026</td> <td>0.1466</td> </tr> <tr> <td>15</td> <td>0.3264</td> <td>0.0000</td> <td>0.3244</td> <td>0.3492</td> </tr> <tr> <td>16</td> <td>0.3264</td> <td>0.0000</td> <td>0.3244</td> <td>0.3492</td> </tr> <tr> <td>17</td> <td>0.3264</td> <td>0.0000</td> <td>0.2933</td> <td>0.3803</td> </tr> <tr> <td>18</td> <td>0.3264</td> <td>0.0000</td> <td>0.2933</td> <td>0.3803</td> </tr> <tr> <td>19</td> <td>0.2244</td> <td>0.0000</td> <td>0.0000</td> <td>0.7756</td> </tr> <tr> <td>20</td> <td>0.1733</td> <td>0.0000</td> <td>0.0511</td> <td>0.7756</td> </tr> <tr> <td>21</td> <td>0.0000</td> <td>0.0000</td> <td>0.0220</td> <td>0.9780</td> </tr> </tbody> </table>	Initial GoM Scores (at Exam 1)					Type	I	II	III	IV	Value	1.000	0.000	0.000	0.000	GoM Scores by Exam (via Eqn. 4)					Exam #	I	II	III	IV	1	1.0000	0.0000	0.0000	0.0000	2	1.0000	0.0000	0.0000	0.0000	3	1.0000	0.0000	0.0000	0.0000	4	1.0000	0.0000	0.0000	0.0000	5	1.0000	0.0000	0.0000	0.0000	6	1.0000	0.0000	0.0000	0.0000	7	1.0000	0.0000	0.0000	0.0000	8	1.0000	0.0000	0.0000	0.0000	9	1.0000	0.0000	0.0000	0.0000	10	0.9743	0.0000	0.0257	0.0000	11	0.9743	0.0000	0.0239	0.0018	12	0.6508	0.0000	0.3299	0.0193	13	0.6508	0.0000	0.3299	0.0193	14	0.6508	0.0000	0.2026	0.1466	15	0.3264	0.0000	0.3244	0.3492	16	0.3264	0.0000	0.3244	0.3492	17	0.3264	0.0000	0.2933	0.3803	18	0.3264	0.0000	0.2933	0.3803	19	0.2244	0.0000	0.0000	0.7756	20	0.1733	0.0000	0.0511	0.7756	21	0.0000	0.0000	0.0220	0.9780
	Initial GoM Scores (at Exam 1)																																																																																																																																											
	Type	I	II	III	IV																																																																																																																																							
	Value	1.000	0.000	0.000	0.000																																																																																																																																							
GoM Scores by Exam (via Eqn. 4)																																																																																																																																												
Exam #	I	II	III	IV																																																																																																																																								
1	1.0000	0.0000	0.0000	0.0000																																																																																																																																								
2	1.0000	0.0000	0.0000	0.0000																																																																																																																																								
3	1.0000	0.0000	0.0000	0.0000																																																																																																																																								
4	1.0000	0.0000	0.0000	0.0000																																																																																																																																								
5	1.0000	0.0000	0.0000	0.0000																																																																																																																																								
6	1.0000	0.0000	0.0000	0.0000																																																																																																																																								
7	1.0000	0.0000	0.0000	0.0000																																																																																																																																								
8	1.0000	0.0000	0.0000	0.0000																																																																																																																																								
9	1.0000	0.0000	0.0000	0.0000																																																																																																																																								
10	0.9743	0.0000	0.0257	0.0000																																																																																																																																								
11	0.9743	0.0000	0.0239	0.0018																																																																																																																																								
12	0.6508	0.0000	0.3299	0.0193																																																																																																																																								
13	0.6508	0.0000	0.3299	0.0193																																																																																																																																								
14	0.6508	0.0000	0.2026	0.1466																																																																																																																																								
15	0.3264	0.0000	0.3244	0.3492																																																																																																																																								
16	0.3264	0.0000	0.3244	0.3492																																																																																																																																								
17	0.3264	0.0000	0.2933	0.3803																																																																																																																																								
18	0.3264	0.0000	0.2933	0.3803																																																																																																																																								
19	0.2244	0.0000	0.0000	0.7756																																																																																																																																								
20	0.1733	0.0000	0.0511	0.7756																																																																																																																																								
21	0.0000	0.0000	0.0220	0.9780																																																																																																																																								
2	I	1.0000	0.0000	0.0000	0.0000	1.0000	0.0000	0.0000	0.0000																																																																																																																																			
	II	0.0000	1.0000	0.0000	0.0000	0.0000	1.0000	0.0000	0.0000																																																																																																																																			
	III	0.0000	0.0000	1.0000	0.0000	0.0000	0.0000	1.0000	0.0000																																																																																																																																			
	IV	0.0000	0.0000	0.0000	1.0000	0.0000	0.0000	0.0000	1.0000																																																																																																																																			
3	I	1.0000	0.0000	0.0000	0.0000	1.0000	0.0000	0.0000	0.0000																																																																																																																																			
	II	0.0000	1.0000	0.0000	0.0000	0.0000	0.9378	0.0622	0.0000																																																																																																																																			
	III	0.0000	0.0000	1.0000	0.0000	0.0000	0.0000	0.7385	0.2615																																																																																																																																			
	IV	0.0000	0.0000	0.0000	1.0000	0.0000	0.0000	0.0000	1.0000																																																																																																																																			
4	I	1.0000	0.0000	0.0000	0.0000	1.0000	0.0000	0.0000	0.0000																																																																																																																																			
	II	0.0000	0.9378	0.0622	0.0000	0.0000	1.0000	0.0000	0.0000																																																																																																																																			
	III	0.0000	0.0000	0.7385	0.2615	0.0000	0.0000	0.6536	0.3464																																																																																																																																			
	IV	0.0000	0.0000	0.0000	1.0000	0.0000	0.0000	0.0000	1.0000																																																																																																																																			
5	I	1.0000	0.0000	0.0000	0.0000	1.0000	0.0000	0.0000	0.0000																																																																																																																																			
	II	0.0000	0.9378	0.0406	0.0215	0.0000	0.1838	0.8162	0.0000																																																																																																																																			
	III	0.0000	0.0000	0.4827	0.5173	0.0000	0.0000	0.0000	1.0000																																																																																																																																			
	IV	0.0000	0.0000	0.0000	1.0000	0.0000	0.0000	0.0000	1.0000																																																																																																																																			
6	I	1.0000	0.0000	0.0000	0.0000	1.0000	0.0000	0.0000	0.0000																																																																																																																																			
	II	0.0000	0.1724	0.7654	0.0622	0.0000	0.0000	1.0000	0.0000																																																																																																																																			
	III	0.0000	0.0000	0.0000	1.0000	0.0000	0.0000	1.0000	0.0000																																																																																																																																			
	IV	0.0000	0.0000	0.0000	1.0000	0.0000	0.0000	0.0000	1.0000																																																																																																																																			
7	I	1.0000	0.0000	0.0000	0.0000	1.0000	0.0000	0.0000	0.0000																																																																																																																																			
	II	0.0000	0.0000	0.9378	0.0622	0.0000	0.0000	0.8988	0.1012																																																																																																																																			
	III	0.0000	0.0000	0.0000	1.0000	0.0000	0.0000	0.9553	0.0447																																																																																																																																			
	IV	0.0000	0.0000	0.0000	1.0000	0.0000	0.0000	0.0000	1.0000																																																																																																																																			
8	I	1.0000	0.0000	0.0000	0.0000	1.0000	0.0000	0.0000	0.0000																																																																																																																																			
	II	0.0000	0.0000	0.8959	0.1041	0.0000	0.0000	0.5204	0.4796																																																																																																																																			
	III	0.0000	0.0000	0.0000	1.0000	0.0000	0.0000	0.8494	0.1506																																																																																																																																			
	IV	0.0000	0.0000	0.0000	1.0000	0.0000	0.0000	0.0000	1.0000																																																																																																																																			
9	I	1.0000	0.0000	0.0000	0.0000	0.9743	0.0000	0.0257	0.0000																																																																																																																																			
	II	0.0000	0.0000	0.7611	0.2389	0.0000	0.0000	0.5913	0.4087																																																																																																																																			
	III	0.0000	0.0000	0.0000	1.0000	0.0000	0.0000	0.7756	0.2244																																																																																																																																			
	IV	0.0000	0.0000	0.0000	1.0000	0.0000	0.0000	0.0000	1.0000																																																																																																																																			

10	I	0.9743	0.0000	0.0257	0.0000	1.0000	0.0000	0.0000	0.0000
	II	0.0000	0.0000	0.5903	0.4097	0.0000	0.0000	0.5913	0.4087
	III	0.0000	0.0000	0.0000	1.0000	0.0000	0.0000	0.9307	0.0693
	IV	0.0000	0.0000	0.0000	1.0000	0.0000	0.0000	0.0000	1.0000
11	I	0.9743	0.0000	0.0239	0.0018	0.6680	0.0000	0.3320	0.0000
	II	0.0000	0.0000	0.5494	0.4506	0.0000	0.0000	0.5913	0.4087
	III	0.0000	0.0000	0.0000	1.0000	0.0000	0.0000	0.2678	0.7322
	IV	0.0000	0.0000	0.0000	1.0000	0.0000	0.0000	0.0000	1.0000
12	I	0.6508	0.0000	0.3299	0.0193	1.0000	0.0000	0.0000	0.0000
	II	0.0000	0.0000	0.1471	0.8529	0.0000	0.0000	0.5913	0.4087
	III	0.0000	0.0000	0.0000	1.0000	0.0000	0.0000	1.0000	0.0000
	IV	0.0000	0.0000	0.0000	1.0000	0.0000	0.0000	0.0000	1.0000
13	I	0.6508	0.0000	0.3299	0.0193	1.0000	0.0000	0.0000	0.0000
	II	0.0000	0.0000	0.1471	0.8529	0.0000	0.0000	0.5913	0.4087
	III	0.0000	0.0000	0.0000	1.0000	0.0000	0.0000	0.6141	0.3859
	IV	0.0000	0.0000	0.0000	1.0000	0.0000	0.0000	0.0000	1.0000
14	I	0.6508	0.0000	0.2026	0.1466	0.5015	0.0000	0.4985	0.0000
	II	0.0000	0.0000	0.0904	0.9096	0.0000	0.0000	0.5913	0.4087
	III	0.0000	0.0000	0.0000	1.0000	0.0000	0.0000	0.0000	1.0000
	IV	0.0000	0.0000	0.0000	1.0000	0.0000	0.0000	0.0000	1.0000
15	I	0.3264	0.0000	0.3244	0.3492	1.0000	0.0000	0.0000	0.0000
	II	0.0000	0.0000	0.0000	1.0000	0.0000	0.0000	1.0000	0.0000
	III	0.0000	0.0000	0.0000	1.0000	0.0000	0.0000	1.0000	0.0000
	IV	0.0000	0.0000	0.0000	1.0000	0.0000	0.0000	0.0000	1.0000
16	I	0.3264	0.0000	0.3244	0.3492	1.0000	0.0000	0.0000	0.0000
	II	0.0000	0.0000	0.0000	1.0000	0.0000	0.0000	1.0000	0.0000
	III	0.0000	0.0000	0.0000	1.0000	0.0000	0.0000	0.9042	0.0958
	IV	0.0000	0.0000	0.0000	1.0000	0.0000	0.0000	0.0000	1.0000
17	I	0.3264	0.0000	0.2933	0.3803	1.0000	0.0000	0.0000	0.0000
	II	0.0000	0.0000	0.0000	1.0000	0.0000	0.0000	1.0000	0.0000
	III	0.0000	0.0000	0.0000	1.0000	0.0000	0.0000	1.0000	0.0000
	IV	0.0000	0.0000	0.0000	1.0000	0.0000	0.0000	0.0000	1.0000
18	I	0.3264	0.0000	0.2933	0.3803	0.6874	0.0000	0.0000	0.3126
	II	0.0000	0.0000	0.0000	1.0000	0.0000	0.0000	0.5913	0.4087
	III	0.0000	0.0000	0.0000	1.0000	0.0000	0.0000	0.0000	1.0000
	IV	0.0000	0.0000	0.0000	1.0000	0.0000	0.0000	0.0000	1.0000
19	I	0.2244	0.0000	0.0000	0.7756	0.7724	0.0000	0.2276	0.0000
	II	0.0000	0.0000	0.0000	1.0000	0.0000	0.0000	0.5913	0.4087
	III	0.0000	0.0000	0.0000	1.0000	0.0000	0.0000	0.0080	0.9920
	IV	0.0000	0.0000	0.0000	1.0000	0.0000	0.0000	0.0000	1.0000

Life Table (q_x via Eqn. 1; T_x and e_x Truncated at 10 Years)						
Exam #	q_x	p_x	l_x	L_x	T_x	e_x (yrs.)
1	0.0091	0.9909	1.0000	0.9954	17.08	8.54
2	0.0091	0.9909	0.9909	0.9864	16.08	8.11
3	0.0091	0.9909	0.9818	0.9774	15.09	7.69
4	0.0091	0.9909	0.9729	0.9684	14.12	7.26
5	0.0091	0.9909	0.9640	0.9596	13.15	6.82
6	0.0091	0.9909	0.9552	0.9508	12.19	6.38
7	0.0091	0.9909	0.9465	0.9422	11.24	5.94
8	0.0091	0.9909	0.9379	0.9336	10.30	5.49
9	0.0091	0.9909	0.9293	0.9251	9.36	5.04
10	0.0099	0.9901	0.9208	0.9163	8.44	4.58
11	0.0101	0.9899	0.9117	0.9071	7.52	4.12
12	0.0215	0.9785	0.9025	0.8928	6.61	3.66
13	0.0215	0.9785	0.8831	0.8736	5.72	3.24
14	0.0359	0.9641	0.8642	0.8486	4.85	2.80
15	0.0684	0.9316	0.8331	0.8046	4.00	2.40
16	0.0684	0.9316	0.7761	0.7496	3.19	2.06
17	0.0719	0.9281	0.7230	0.6970	2.44	1.69
18	0.0719	0.9281	0.6710	0.6469	1.75	1.30
19	0.1198	0.8802	0.6227	0.5854	1.10	0.88
20	0.1213	0.8787	0.5482	0.5149	0.51	0.47
21	0.1493	0.8507	0.4817	0.0000	0.00	0.00
Truncated life expectancy =			8.54 years			

20	I	0.1733	0.0000	0.0511	0.7756	0.0000	0.0000	0.1266	0.8734
	II	0.0000	0.0000	0.0000	1.0000	0.0000	0.0000	0.2688	0.7312
	III	0.0000	0.0000	0.0000	1.0000	0.0000	0.0000	0.0020	0.9980
	IV	0.0000	0.0000	0.0000	1.0000	0.0000	0.0000	0.0000	1.0000
21	I	0.0000	0.0000	0.0220	0.9780	—	—	—	—
	II	0.0000	0.0000	0.0000	1.0000	—	—	—	—
	III	0.0000	0.0000	0.0000	1.0000	—	—	—	—
	IV	0.0000	0.0000	0.0000	1.0000	—	—	—	—

Web Table A7: Transition Matrices, Probabilities of Death, and 10-Year Life-Table Analysis in the 3-D Model of AD Progression in the Predictors 1 Data, Type I Females

Exam #	Type	Inputs to Equation (4)				Alternative Inputs to Equation (4)				6-Month Probabilities of Death (from Table 1)				
		V-matrices				U-matrices				Type	I	II	III	IV
		I	II	III	IV	I	II	III	IV	Value	0.0038	0.0012	0.0940	0.0991
1	I	1.0000	0.0000	0.0000	0.0000	1.0000	0.0000	0.0000	0.0000					
	II	0.0000	1.0000	0.0000	0.0000	0.0000	1.0000	0.0000	0.0000					
	III	0.0000	0.0000	1.0000	0.0000	0.0000	0.0000	1.0000	0.0000					
	IV	0.0000	0.0000	0.0000	1.0000	0.0000	0.0000	0.0000	1.0000					
2	I	1.0000	0.0000	0.0000	0.0000	1.0000	0.0000	0.0000	0.0000					
	II	0.0000	1.0000	0.0000	0.0000	0.0000	1.0000	0.0000	0.0000					
	III	0.0000	0.0000	1.0000	0.0000	0.0000	0.0000	1.0000	0.0000					
	IV	0.0000	0.0000	0.0000	1.0000	0.0000	0.0000	0.0000	1.0000					
3	I	1.0000	0.0000	0.0000	0.0000	1.0000	0.0000	0.0000	0.0000					
	II	0.0000	1.0000	0.0000	0.0000	0.0000	0.8297	0.0000	0.1703					
	III	0.0000	0.0000	1.0000	0.0000	0.0000	0.0000	1.0000	0.0000					
	IV	0.0000	0.0000	0.0000	1.0000	0.0000	0.0000	0.0000	1.0000					
4	I	1.0000	0.0000	0.0000	0.0000	1.0000	0.0000	0.0000	0.0000					
	II	0.0000	0.8297	0.0000	0.1703	0.0000	0.7802	0.0000	0.2198					
	III	0.0000	0.0000	1.0000	0.0000	0.0000	0.0000	1.0000	0.0000					
	IV	0.0000	0.0000	0.0000	1.0000	0.0000	0.0000	0.0000	1.0000					
5	I	1.0000	0.0000	0.0000	0.0000	0.3509	0.6491	0.0000	0.0000					
	II	0.0000	0.6474	0.0000	0.3526	0.0000	0.0000	0.0000	1.0000					
	III	0.0000	0.0000	1.0000	0.0000	0.0000	0.0000	1.0000	0.0000					
	IV	0.0000	0.0000	0.0000	1.0000	0.0000	0.0000	0.0000	1.0000					
6	I	0.3509	0.6491	0.0000	0.0000	0.5279	0.4721	0.0000	0.0000					
	II	0.0000	0.0000	0.0000	1.0000	0.0000	1.0000	0.0000	0.0000					
	III	0.0000	0.0000	1.0000	0.0000	0.0000	0.0000	1.0000	0.0000					
	IV	0.0000	0.0000	0.0000	1.0000	0.0000	0.0000	0.0000	1.0000					
7	I	0.1852	0.8148	0.0000	0.0000	0.0000	1.0000	0.0000	0.0000					
	II	0.0000	0.0000	0.0000	1.0000	0.0000	1.0000	0.0000	0.0000					
	III	0.0000	0.0000	1.0000	0.0000	0.0000	0.0000	1.0000	0.0000					
	IV	0.0000	0.0000	0.0000	1.0000	0.0000	0.0000	0.0000	1.0000					
8	I	0.0000	1.0000	0.0000	0.0000	1.0000	0.0000	0.0000	0.0000					
	II	0.0000	0.0000	0.0000	1.0000	0.0000	0.9558	0.0000	0.0442					
	III	0.0000	0.0000	1.0000	0.0000	0.0000	0.0000	0.9428	0.0572					
	IV	0.0000	0.0000	0.0000	1.0000	0.0000	0.0000	0.0000	1.0000					
9	I	0.0000	0.9558	0.0000	0.0442	0.0000	1.0000	0.0000	0.0000					
	II	0.0000	0.0000	0.0000	1.0000	0.0000	0.8504	0.0000	0.1496					
	III	0.0000	0.0000	0.9428	0.0572	0.0000	0.0000	1.0000	0.0000					
	IV	0.0000	0.0000	0.0000	1.0000	0.0000	0.0000	0.0000	1.0000					

Template for 10-Year Life-Table Analysis				
Initial GoM Scores (at Exam 1)				
Type	I	II	III	IV
Value	1.000	0.000	0.000	0.000

GoM Scores by Exam (via Eqn. 4)				
Exam #	I	II	III	IV
1	1.0000	0.0000	0.0000	0.0000
2	1.0000	0.0000	0.0000	0.0000
3	1.0000	0.0000	0.0000	0.0000
4	1.0000	0.0000	0.0000	0.0000
5	1.0000	0.0000	0.0000	0.0000
6	0.3509	0.6491	0.0000	0.0000
7	0.1852	0.8148	0.0000	0.0000
8	0.0000	1.0000	0.0000	0.0000
9	0.0000	0.9558	0.0000	0.0442
10	0.0000	0.8128	0.0000	0.1872
11	0.0000	0.6503	0.0000	0.3497
12	0.0000	0.5361	0.0000	0.4639
13	0.0000	0.3619	0.0000	0.6381
14	0.0000	0.2411	0.0000	0.7589
15	0.0000	0.1126	0.0000	0.8874
16	0.0000	0.0790	0.0000	0.9210
17	0.0000	0.0607	0.0000	0.9393
18	0.0000	0.0453	0.0000	0.9547
19	0.0000	0.0312	0.0000	0.9688
20	0.0000	0.0312	0.0000	0.9688
21	0.0000	0.0113	0.0000	0.9887

10	I	0.0000	0.8128	0.0000	0.1872	0.0000	1.0000	0.0000	0.0000
	II	0.0000	0.0000	0.0000	1.0000	0.0000	0.8000	0.0000	0.2000
	III	0.0000	0.0000	0.9428	0.0572	0.0000	0.0000	0.9709	0.0291
	IV	0.0000	0.0000	0.0000	1.0000	0.0000	0.0000	0.0000	1.0000
11	I	0.0000	0.6503	0.0000	0.3497	0.0000	1.0000	0.0000	0.0000
	II	0.0000	0.0000	0.0000	1.0000	0.0000	0.8245	0.0000	0.1755
	III	0.0000	0.0000	0.9153	0.0847	0.0000	0.0000	0.7688	0.2312
	IV	0.0000	0.0000	0.0000	1.0000	0.0000	0.0000	0.0000	1.0000
12	I	0.0000	0.5361	0.0000	0.4639	0.0000	1.0000	0.0000	0.0000
	II	0.0000	0.0000	0.0000	1.0000	0.0000	0.6750	0.0000	0.3250
	III	0.0000	0.0000	0.7037	0.2963	0.0000	0.0000	0.9630	0.0370
	IV	0.0000	0.0000	0.0000	1.0000	0.0000	0.0000	0.0000	1.0000
13	I	0.0000	0.3619	0.0000	0.6381	0.0000	1.0000	0.0000	0.0000
	II	0.0000	0.0000	0.0000	1.0000	0.0000	0.6662	0.0000	0.3338
	III	0.0000	0.0000	0.6777	0.3223	0.0000	0.0000	0.8815	0.1185
	IV	0.0000	0.0000	0.0000	1.0000	0.0000	0.0000	0.0000	1.0000
14	I	0.0000	0.2411	0.0000	0.7589	0.0000	1.0000	0.0000	0.0000
	II	0.0000	0.0000	0.0000	1.0000	0.0000	0.4669	0.0000	0.5331
	III	0.0000	0.0000	0.5974	0.4026	0.0000	0.0000	1.0000	0.0000
	IV	0.0000	0.0000	0.0000	1.0000	0.0000	0.0000	0.0000	1.0000
15	I	0.0000	0.1126	0.0000	0.8874	0.0000	1.0000	0.0000	0.0000
	II	0.0000	0.0000	0.0000	1.0000	0.0000	0.7021	0.0000	0.2979
	III	0.0000	0.0000	0.5974	0.4026	0.0000	0.0000	0.9427	0.0573
	IV	0.0000	0.0000	0.0000	1.0000	0.0000	0.0000	0.0000	1.0000
16	I	0.0000	0.0790	0.0000	0.9210	0.0000	1.0000	0.0000	0.0000
	II	0.0000	0.0000	0.0000	1.0000	0.0000	0.7677	0.0000	0.2323
	III	0.0000	0.0000	0.5632	0.4368	0.0000	0.0000	1.0000	0.0000
	IV	0.0000	0.0000	0.0000	1.0000	0.0000	0.0000	0.0000	1.0000
17	I	0.0000	0.0607	0.0000	0.9393	0.0000	1.0000	0.0000	0.0000
	II	0.0000	0.0000	0.0000	1.0000	0.0000	0.7472	0.0000	0.2528
	III	0.0000	0.0000	0.5632	0.4368	0.0000	0.0000	1.0000	0.0000
	IV	0.0000	0.0000	0.0000	1.0000	0.0000	0.0000	0.0000	1.0000
18	I	0.0000	0.0453	0.0000	0.9547	0.0000	1.0000	0.0000	0.0000
	II	0.0000	0.0000	0.0000	1.0000	0.0000	0.6873	0.0000	0.3127
	III	0.0000	0.0000	0.5632	0.4368	0.0000	0.0000	1.0000	0.0000
	IV	0.0000	0.0000	0.0000	1.0000	0.0000	0.0000	0.0000	1.0000
19	I	0.0000	0.0312	0.0000	0.9688	0.0000	1.0000	0.0000	0.0000
	II	0.0000	0.0000	0.0000	1.0000	0.0000	1.0000	0.0000	0.0000
	III	0.0000	0.0000	0.5632	0.4368	0.0000	0.0000	0.4769	0.5231
	IV	0.0000	0.0000	0.0000	1.0000	0.0000	0.0000	0.0000	1.0000

Life Table (q_x via Eqn. 1; T_x and e_x Truncated at 10 Years)						
Exam #	q_x	p_x	l_x	L_x	T_x	e_x (yrs.)
1	0.0038	0.9962	1.0000	0.9981	16.75	8.38
2	0.0038	0.9962	0.9962	0.9943	15.75	7.91
3	0.0038	0.9962	0.9924	0.9905	14.76	7.44
4	0.0038	0.9962	0.9887	0.9868	13.77	6.96
5	0.0038	0.9962	0.9849	0.9830	12.78	6.49
6	0.0021	0.9979	0.9812	0.9802	11.80	6.01
7	0.0017	0.9983	0.9791	0.9783	10.82	5.53
8	0.0012	0.9988	0.9775	0.9769	9.84	5.03
9	0.0055	0.9945	0.9764	0.9737	8.86	4.54
10	0.0195	0.9805	0.9710	0.9616	7.89	4.06
11	0.0354	0.9646	0.9521	0.9352	6.93	3.64
12	0.0466	0.9534	0.9184	0.8970	5.99	3.26
13	0.0636	0.9364	0.8756	0.8477	5.10	2.91
14	0.0755	0.9245	0.8199	0.7889	4.25	2.59
15	0.0881	0.9119	0.7580	0.7246	3.46	2.28
16	0.0913	0.9087	0.6912	0.6597	2.74	1.98
17	0.0931	0.9069	0.6281	0.5988	2.08	1.65
18	0.0946	0.9054	0.5696	0.5426	1.48	1.30
19	0.0960	0.9040	0.5157	0.4909	0.93	0.91
20	0.0960	0.9040	0.4662	0.4438	0.44	0.48
21	0.0980	0.9020	0.4214	0.0000	0.00	0.00
Truncated life expectancy =			8.38 years			

20	I	0.0000	0.0312	0.0000	0.9688	0.0000	1.0000	0.0000	0.0000
	II	0.0000	0.0000	0.0000	1.0000	0.0000	0.3632	0.0000	0.6368
	III	0.0000	0.0000	0.2686	0.7314	0.0000	0.0000	1.0000	0.0000
	IV	0.0000	0.0000	0.0000	1.0000	0.0000	0.0000	0.0000	1.0000
21	I	0.0000	0.0113	0.0000	0.9887	—	—	—	—
	II	0.0000	0.0000	0.0000	1.0000	—	—	—	—
	III	0.0000	0.0000	0.2686	0.7314	—	—	—	—
	IV	0.0000	0.0000	0.0000	1.0000	—	—	—	—