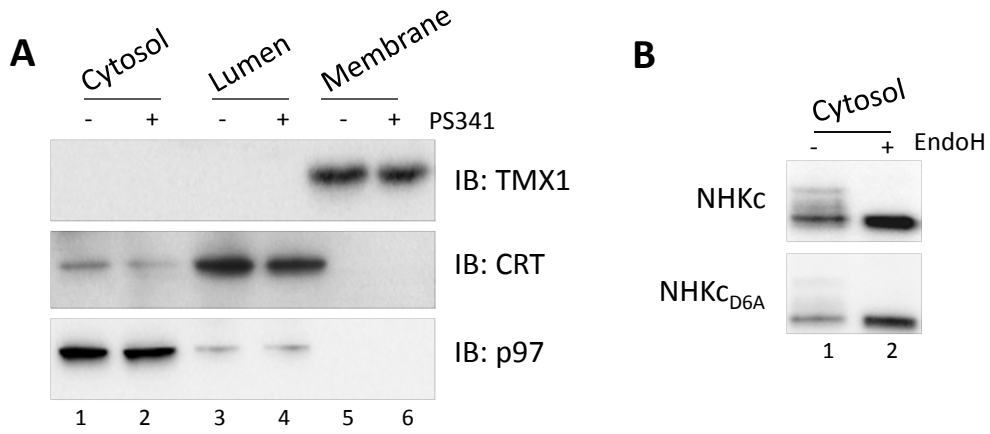


# Supplemental Materials

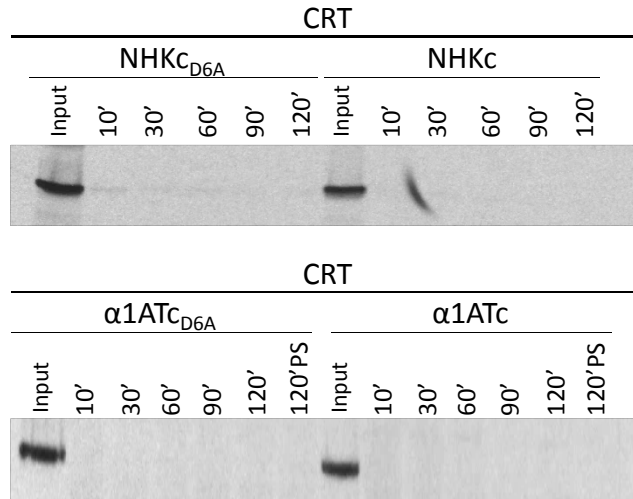
*Molecular Biology of the Cell*

Merulla et al.

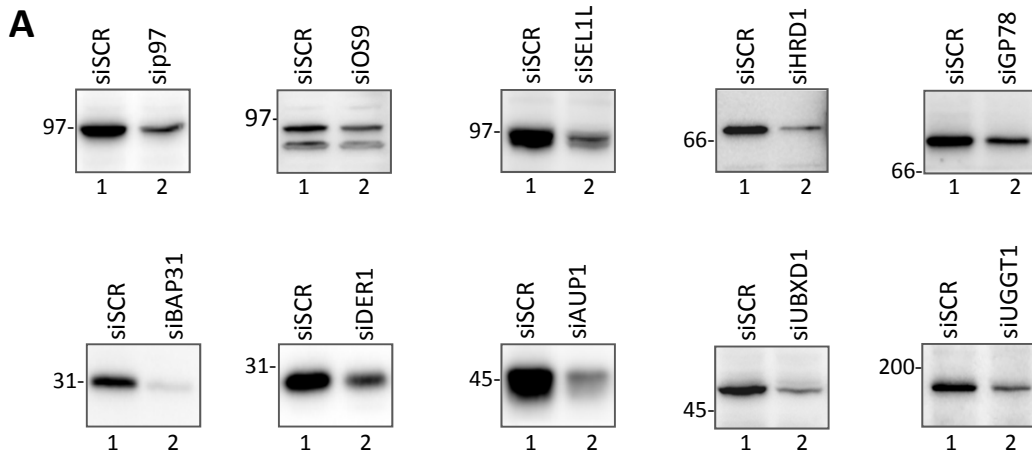
**Fig. S1**



**Fig. S2**



**Fig. S3**



**B**

PROTEIN	siRNA sequence
UGGT1	GGUCAUUGCUACGACAUCAtt
p97	GGCUCGUGGAGGUAACAUUtt
OS-9	CAUCAUCCAGGAGACAGAGtt
SEL1L	GGCUAUACUGUGGCUAGAAtt
HRD1	CCAGCAUCCCUAGCUCAGAtt
GP78	GACGGAUUCAAGUACCUUUtt
BAP31	UGGUGACUCUCAUUUCGCAtt
DER1	CGUUAGCAAUGGAUAUGCAtt
AUP1	CCAACCAUGUGACACCUUUtt
UBXD1	GAGAAGUACCGGAAGAUCAtt

## Supplementary Figures

**Fig. S1**(A)Separation of cytosolic (lanes 1, mock-treated cells and 2, PS341-treated cells, p97 as marker), luminal (lanes 3 and 4, calreticulin (CRT) as marker)and membrane fractions (lanes 5 and 6, TMX1 as marker).(B) EndoH-treatment of cytosolic NHKc (upper panel) or NHK<sub>D6A</sub> (lower panel).

**Fig. S2**Same as **Figs. 4C-4D, 4F-4G** for CRT. CRT and associated polypeptides have been immunoisolated from cell lysates, the immunocomplexes have been dissociated before immunoisolation of the radiolabeled chimeras. Only NHK<sub>D6A</sub> weakly associates with the lectin chaperone.

**Fig. S3** (A)Efficiency control for the RNA interferences performed in this study. (B) Sequences of the siRNAs used for silencing the selected gene products.