

Figure S1; Durben et al.

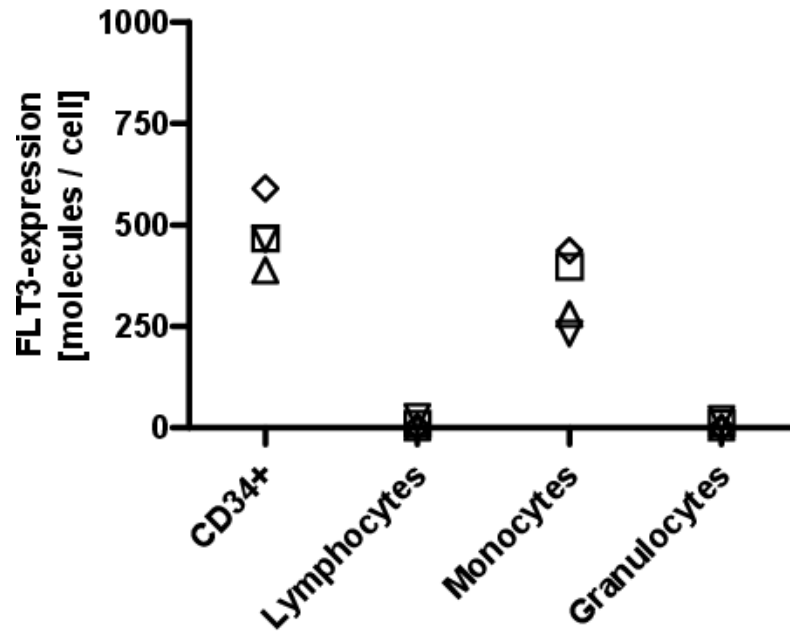


Fig. S1:

FACS analysis of FLT3 expression on different subpopulations of normal bone marrow cultures. Bone marrow cells of four different healthy subjects (□△▽◇) were analyzed by flow cytometry. Subpopulations were defined by flow cytometry as indicated, and FLT3 expression was determined as described in the Methods section.

Figure S2; Durben et al.

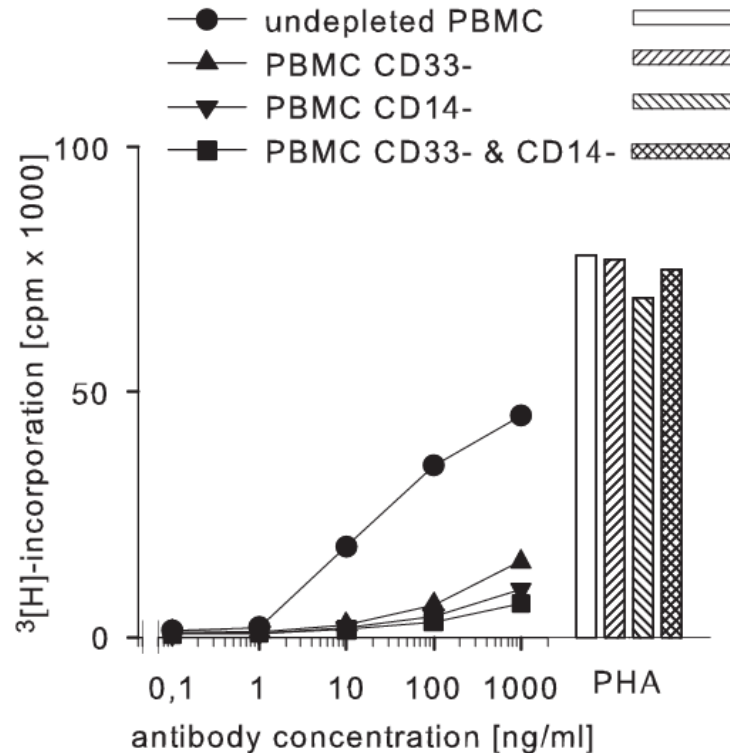


Fig. S2:

Activation of normal PBMC and PBMC subpopulations by the 4G8 X UCHT1 Fabsc-antibody. Undepleted PBMC (●), PBMC depleted of CD33+ cells (▲) or CD14+ cells (▼), or CD14+ and CD33+ cells (■) were incubated for two days with the indicated amounts of the bispecific 4G8 X UCHT1 Fabsc-antibody. Bars on the right show that the response of the different cell populations to polyclonal stimulation with PHA is comparable.