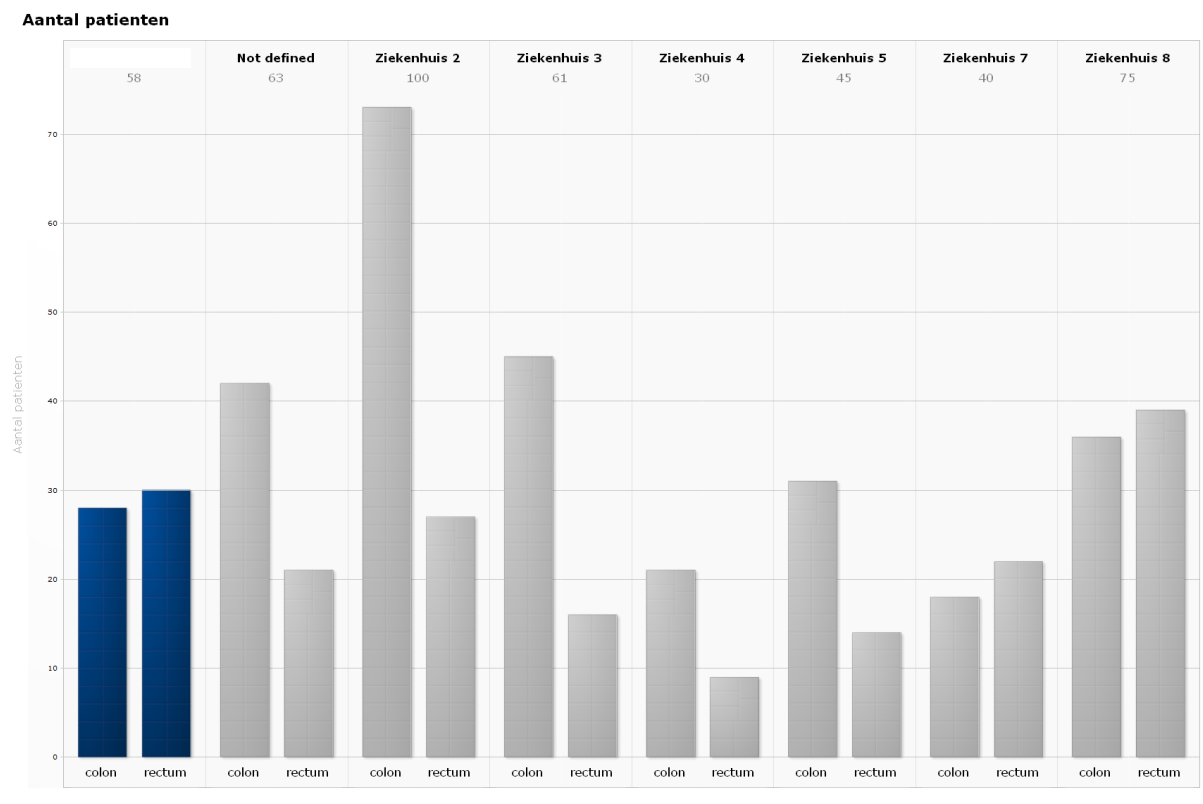


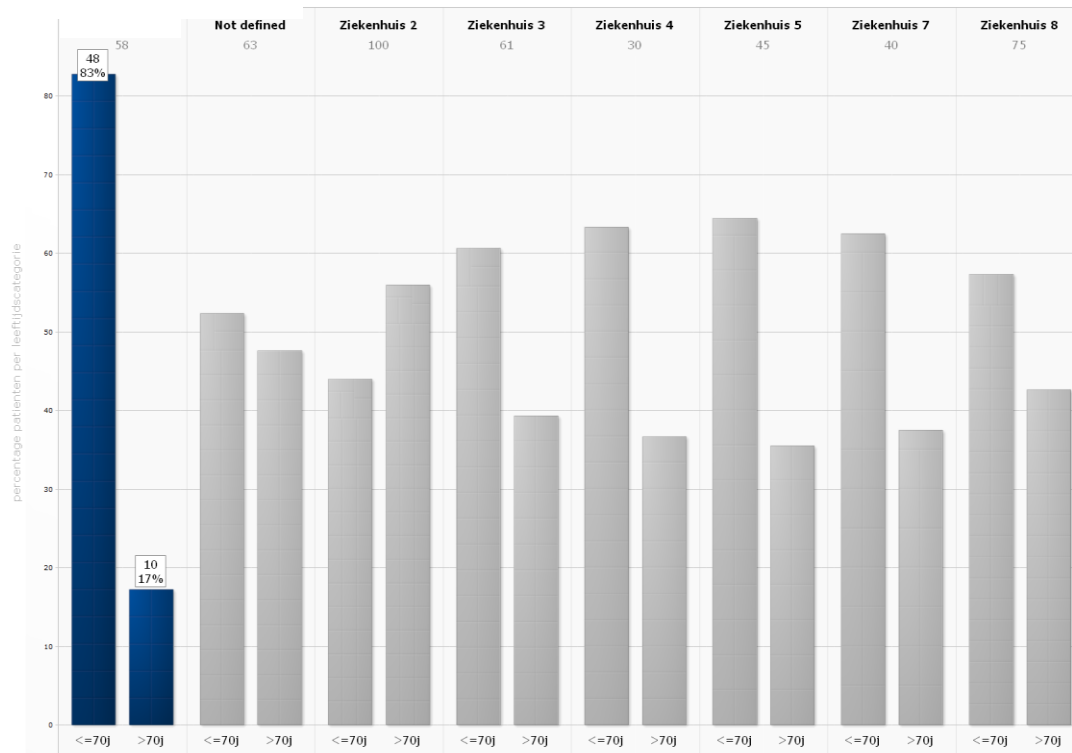
## Illustrative sample of a hospital scoring

### Patient groups

Eight hospitals participated in the survey, of which three were academic, one was a teaching hospital and four were non-teaching hospitals. A number of 472 patients underwent elective surgery due to a primary colorectal carcinoma. All other patients were excluded.

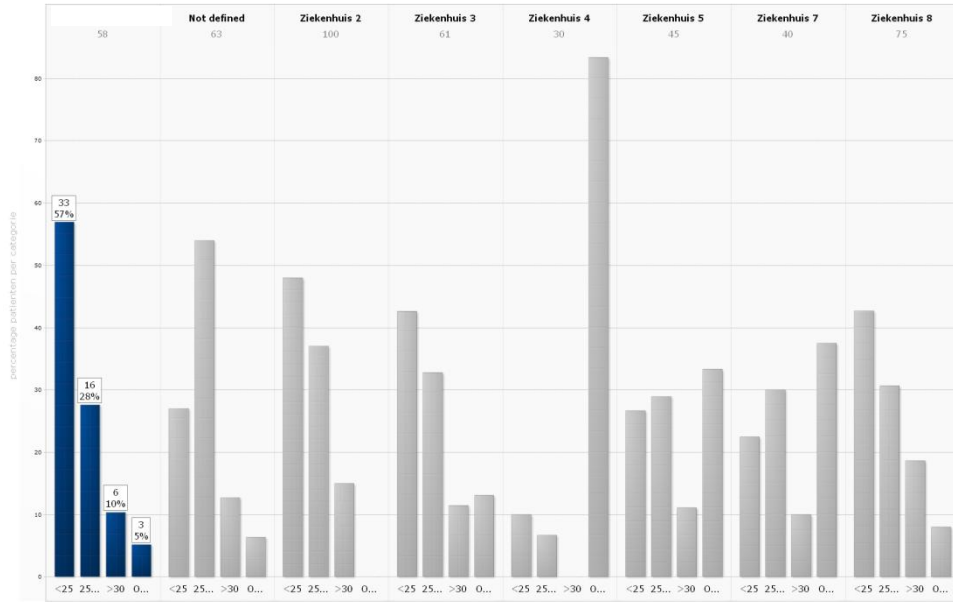


**Table 1.** Number of included elective patients per hospital with a specification for colon and rectum carcinoma. In the columns the hospital number is presented. 'Aantal patiënten' = number of patients. 'Ziekenhuis' = hospital.

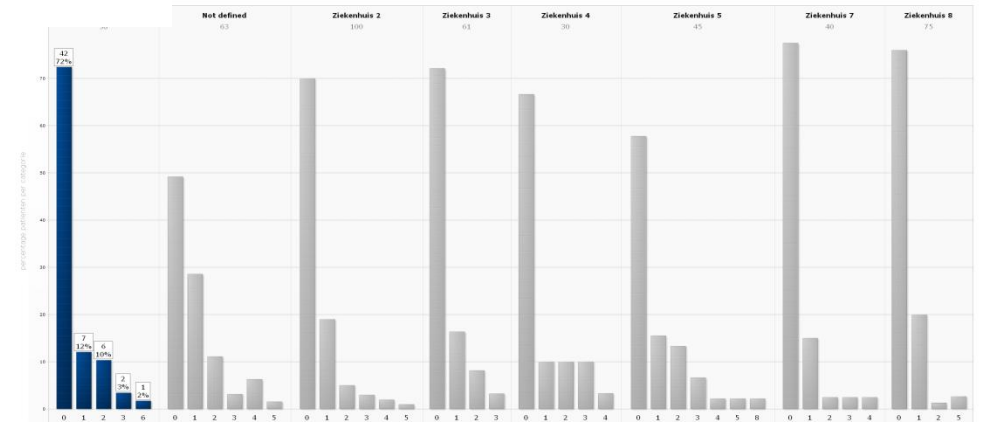


**Table 2.** Age per hospital during surgery. Divided in < 70 years and > 70 years. In the columns the hospital number is presented. 'Ziekenhuis' = hospital.

**BMI**



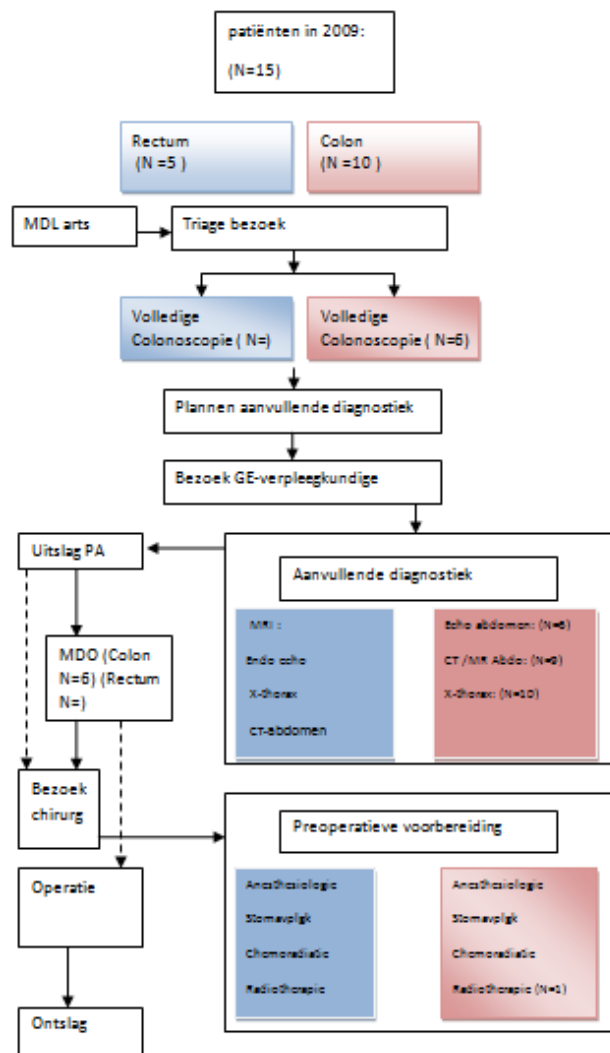
**Table 3.** Body Mass Index, divided in < 2, between 25 and 30 and > 30.



**Table 4.** Charleston Comorbidity Score. 'Ziekenhuis' = hospital

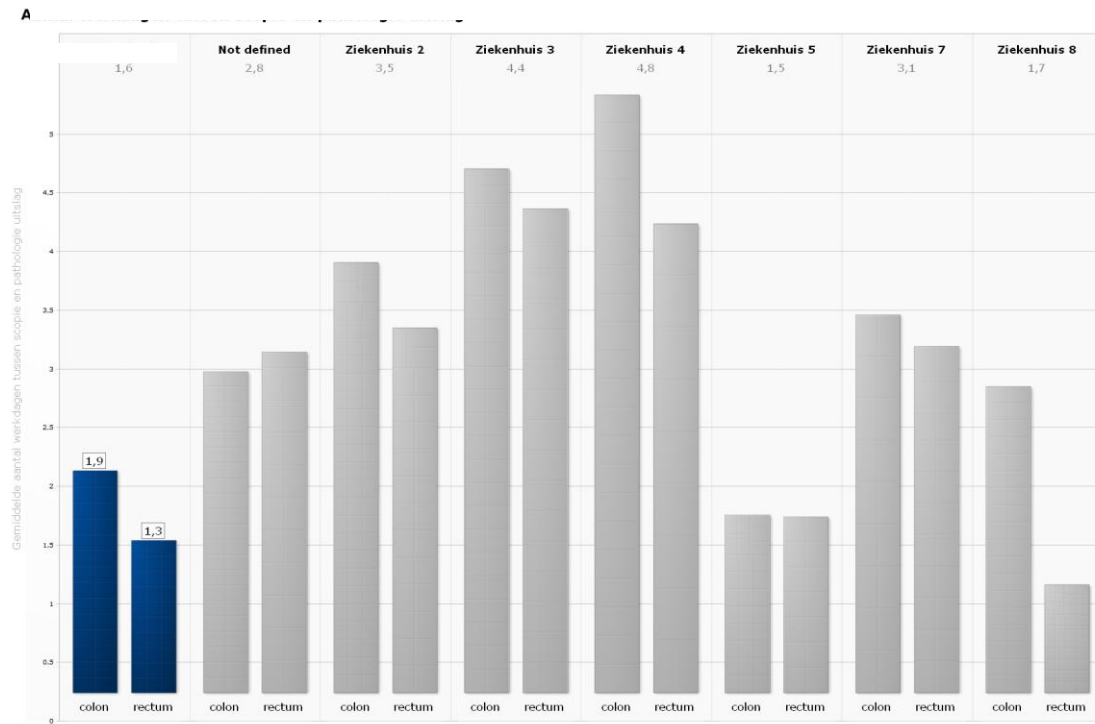
## Flowchart

A tailor-made flowchart with the patients-tread pathway.



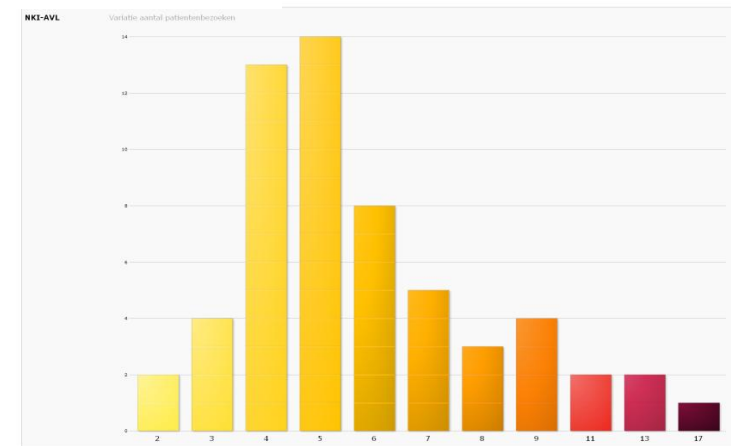
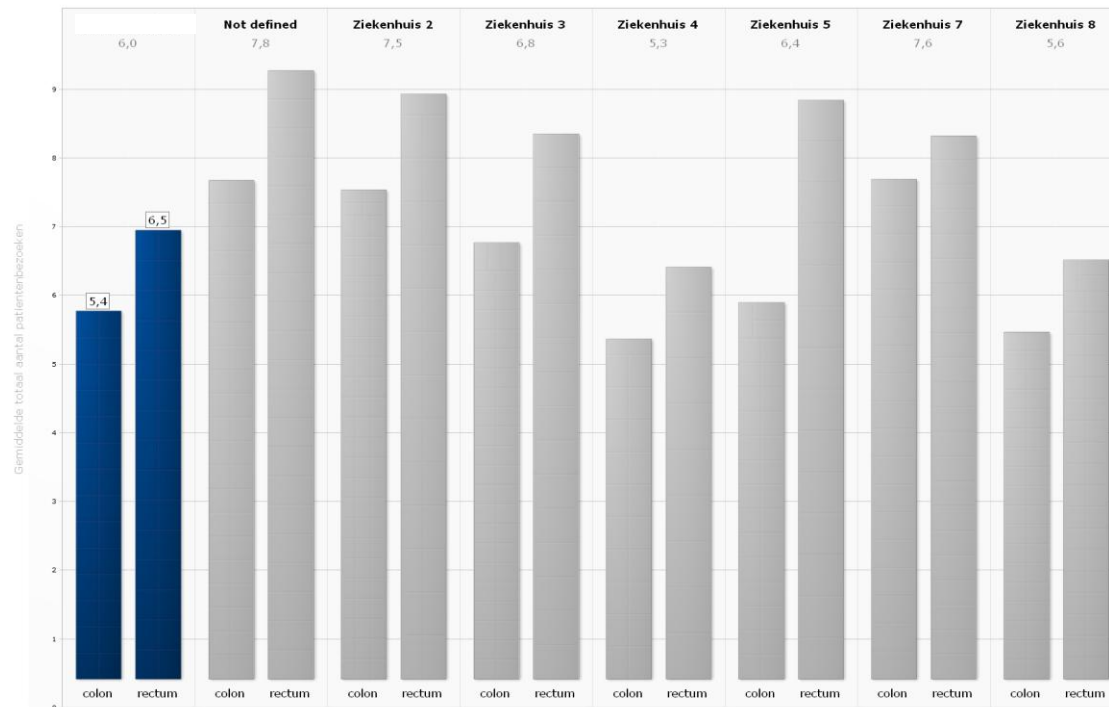
**Table 5.** Dutch example of a flow chart specified for patients with colon carcinoma and rectum carcinoma in your hospital.

## Throughput



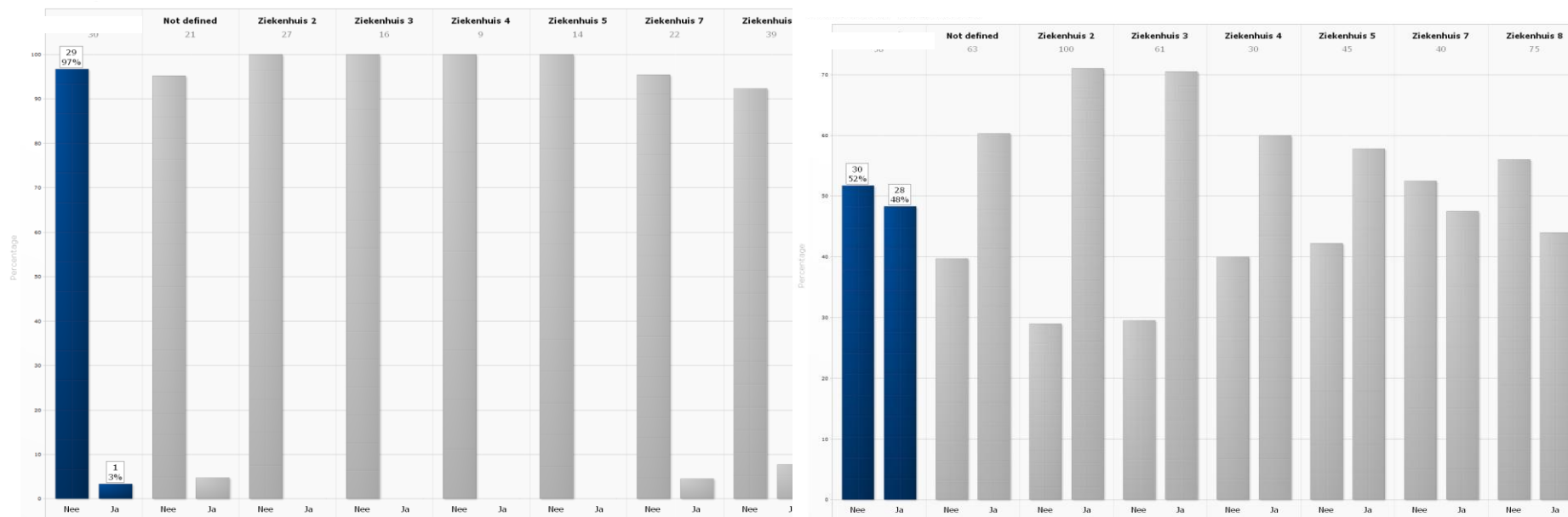
**Table 6.** Number of workdays between scopy and PA for colon and rectum. 'Ziekenhuis' = hospital.

## Number of patient visits

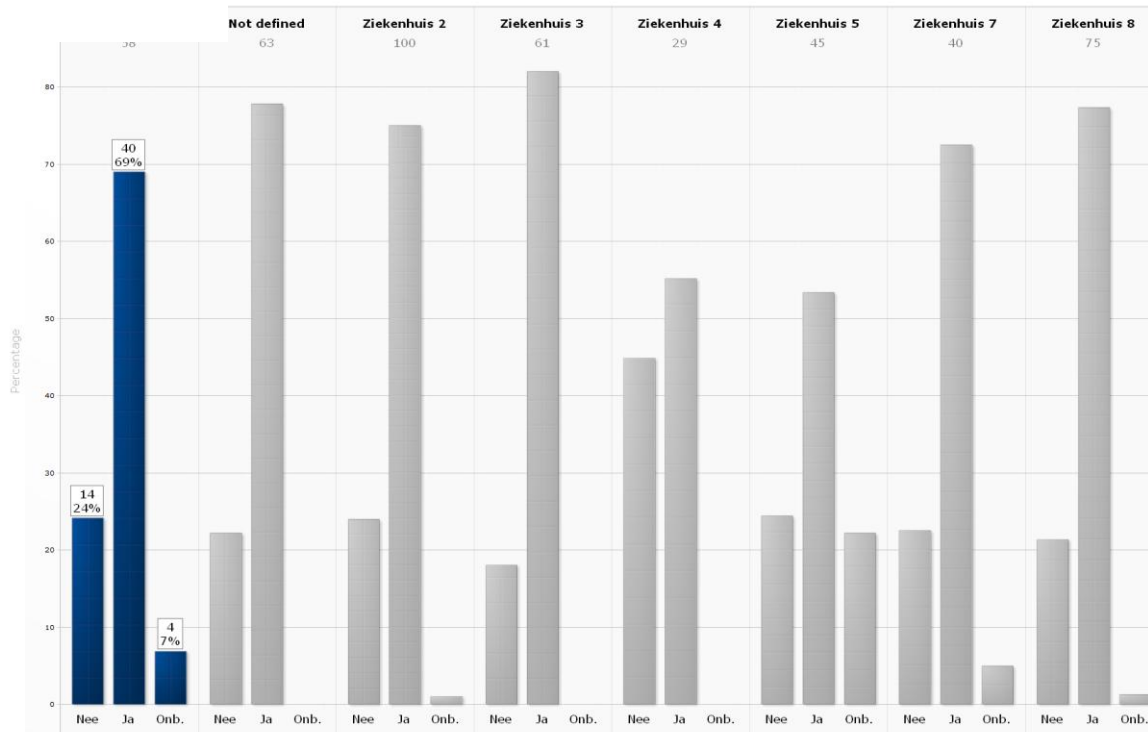


**Table 7 and 8.** The number of patient visits prior to surgery to outpatient clinics for colon and rectum ( surgery, anesthesiology and GE) and radiology. Variation of the number of visits in your own hospital. 'Ziekenhuis' = hospital.

## Patient related outcome

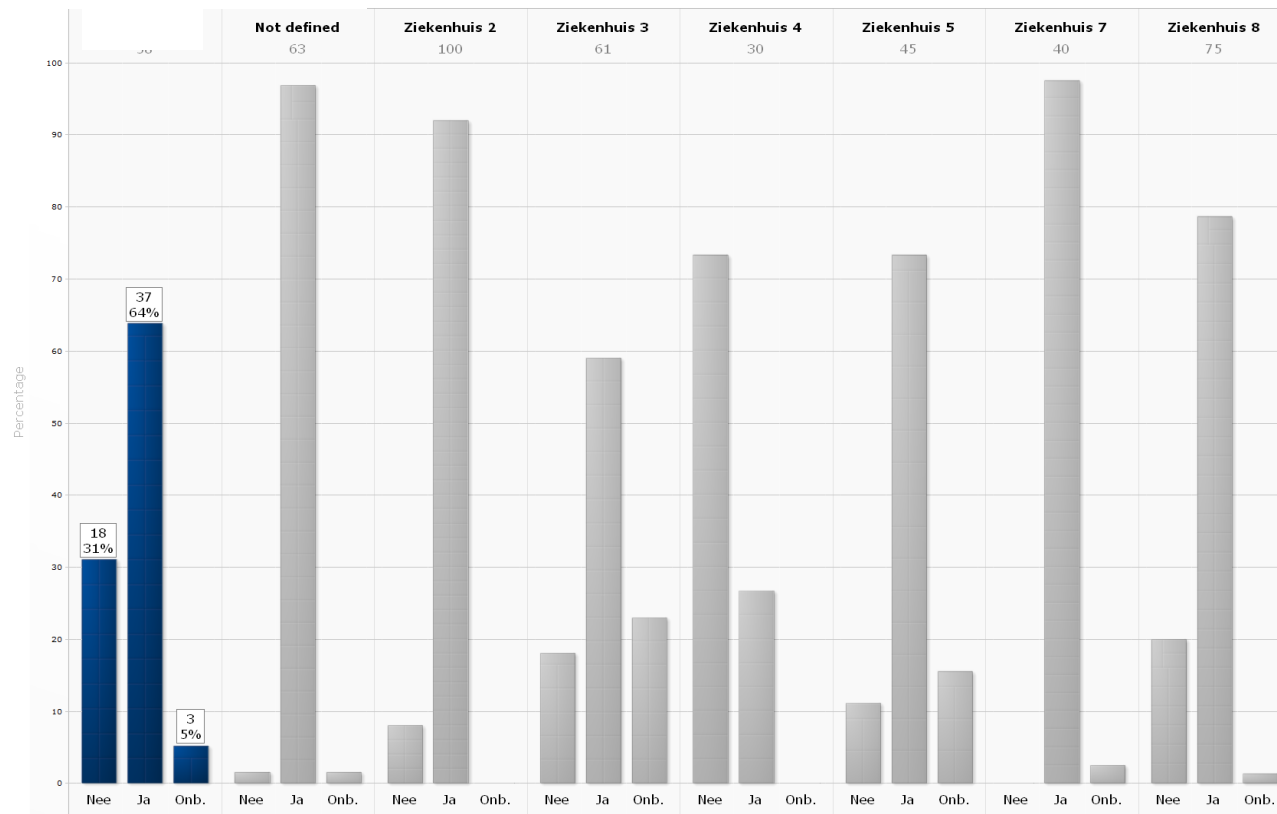


**Table 9 and 10.** Examples of patient related outcome: pre-operative imaging. liver and lung. Number of patients with imaging ( yes/no). 'Ziekenhuis' = hospital. 'Nee' = no, 'ja' = yes.



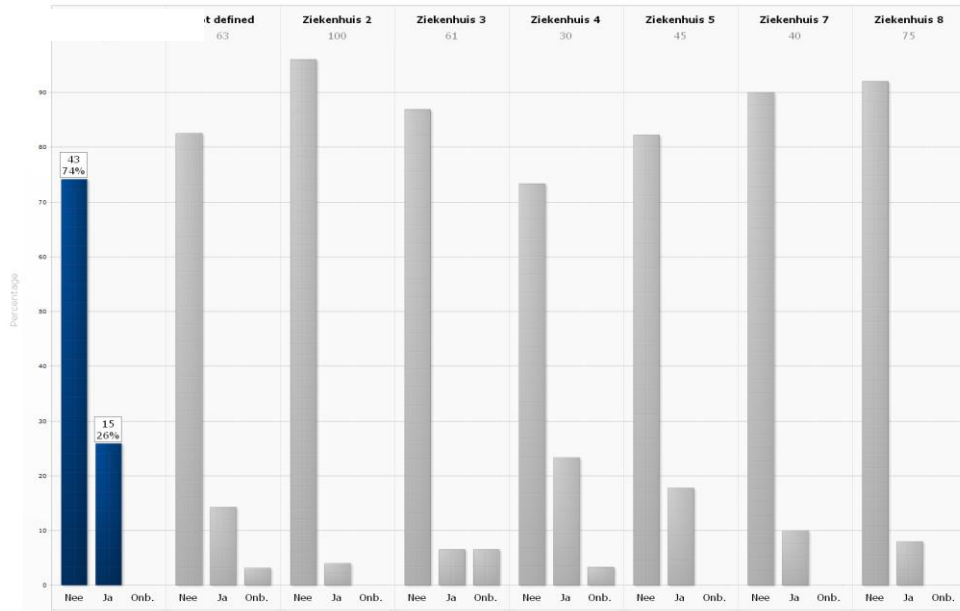
**Table 11.** Number of patients with a total colostomy ( no/yes/ unknown). 'Ziekenhuis' = hospital, 'Nee' = no, 'ja' = yes.



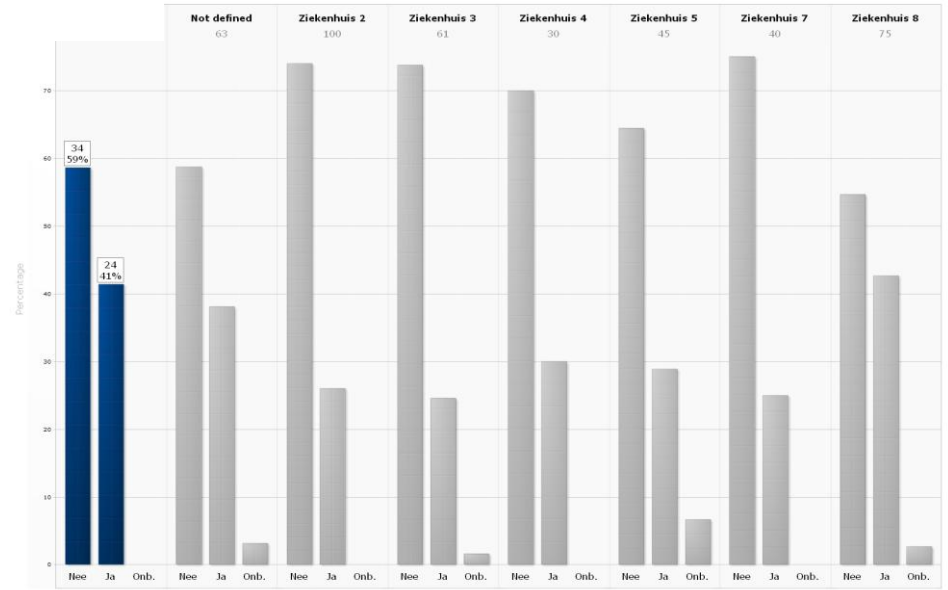


**Table 12.** Number of patients discussed in MDT ( no/yes/unknown). 'Ziekenhuis' = hospital. 'Nee' = no, 'Ja' = yes.

**Re interventions**

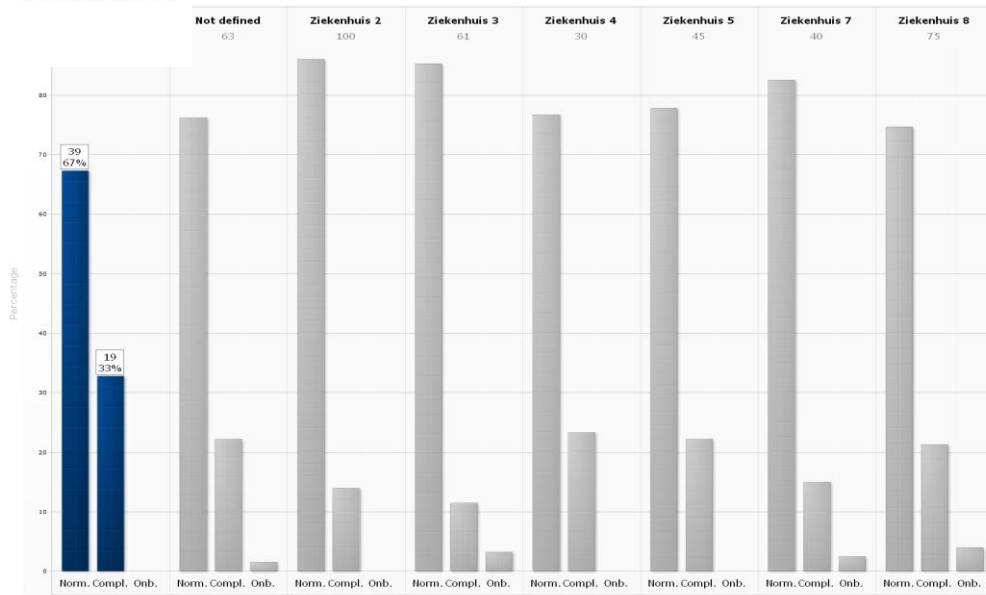


**Complicaties**

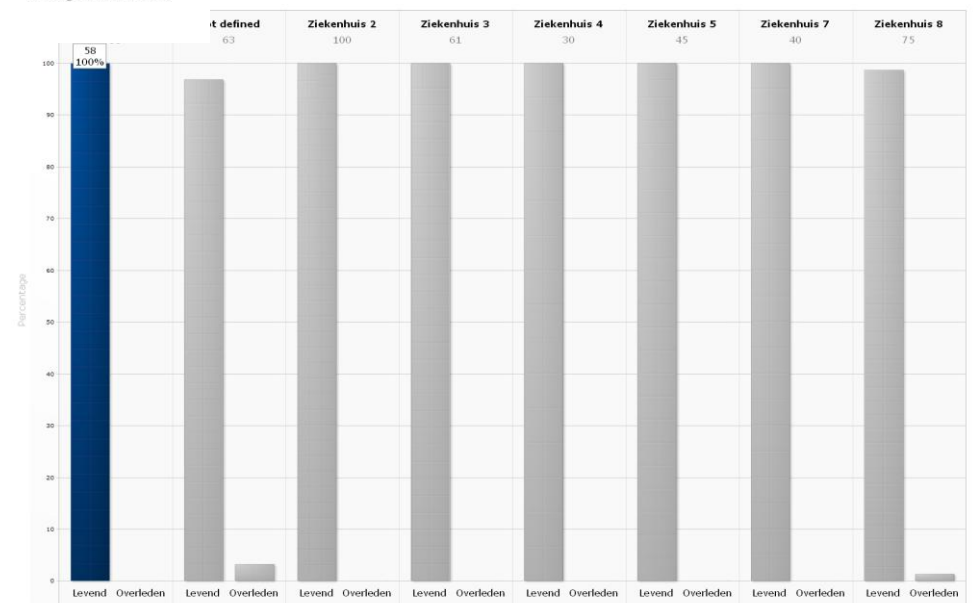


**Table 13 and 14.** Number of reinterventions and number of complications ( no/yes/ unknown). Ziekenhuis' = hospital. 'Nee' = no, 'Ja' = yes.

**Gecompliceerd beloop**



**30 dagen Mortaliteit**



**Table 15 and 16.** Complicated course and 30-day mortality ( no/yes/unknown). 'Gecompliceerd beloop' = complicated course. '30 dagen mortaliteit' = 30-day mortality. 'Ziekenhuis' = hospital. 'Levend' = alive. 'Overleden' = deceased. 'Ziekenhuis' = hospital.

Organizational characteristics.

	Hospital 1	Hospital 2	Hospital 3	Hospital 4	Hospital 5	Hospital 6	Hospital 7	Hospital 8	Mean
Operational focus									
Autonomous work cells									
Physical lay-out									
Multi-skilled team members									
Pull planning									
Non-value adding activities									

**Table 17.** *Organizational characteristics measured during the in-depth analysis in your hospital.*