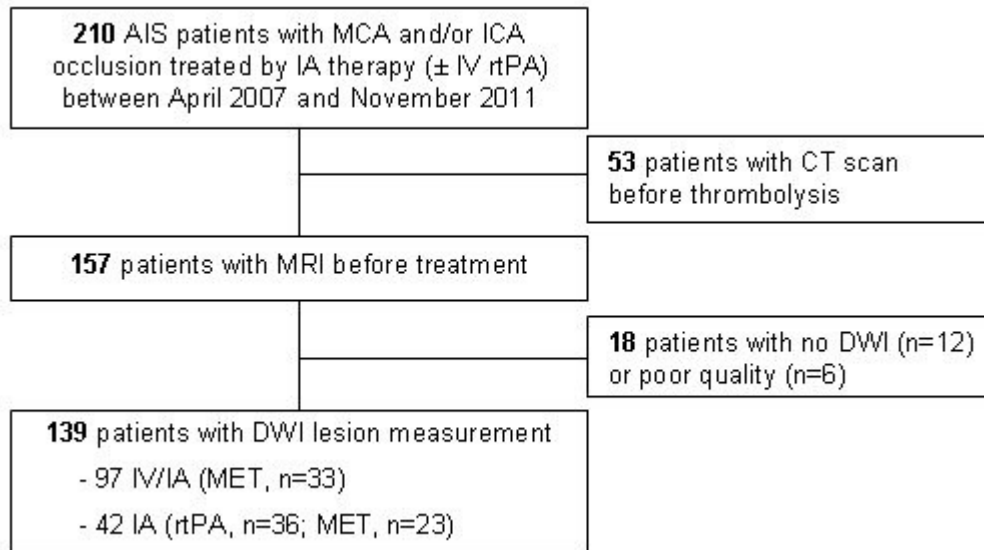


SUPPLEMENTAL MATERIAL

Supplemental Figure.

Figure S1. Study Flow-Chart.



Abbreviations : MCA = middle cerebral artery; ICA = internal carotid artery; IV = intravenous; IA = intra-arterial; rtPA = recombinant tissue plasminogen activator; CT scan = computed tomography scan; MRI = magnetic resonance imaging; DWI = diffusion-weighted imaging; MET = mechanical endovascular therapy.

Supplemental table 1. Rates of Favorable Outcome by TIMI Flow Grades, Overall and According to DWI Lesion Volume Subgroups.

	TIMI 0-1 (n=35)	TIMI 2 (n=39)	TIMI 3 (n=64)	P
Overall	6 (17.1)	14 (35.9)	46 (71.9)	<0.001
DWI Lesion Volume, tertiles				
<8 cc	2 (28.6)	8 (66.7)	19 (73.1)	0.12
8-32 cc	4 (23.5)	2 (25.0)	17 (77.3)	0.001
>32 cc	0 (0.0)	4 (21.1)	10 (62.5)	<0.001
MRA-DWI mismatch status				
Yes *	5 (23.8)	10 (52.6)	29 (70.7)	0.002
No	1 (7.1)	4 (20.0)	17 (73.9)	<0.001
NIHSS-DWI mismatch criteria				
NIHSS≥8 and volume ≤25 cc	5 (27.8)	4 (44.4)	22 (66.7)	0.027
NIHSS≥8 and volume >25 cc	0 (0.0)	4 (21.1)	13 (68.4)	<0.001
NIHSS<8	1 (25.0)	2 (100.0)	11 (91.7)	0.036
Very large DWI lesion group				
Volume ≤70 cc	6 (19.4)	13 (41.9)	43 (75.4)	<0.001
Volume >70 cc	0 (0.0)	1 (12.5)	3 (42.9)	0.28

Data are no. (%) of patients with outcomes unless otherwise indicated. Comparisons in favorable outcome between TIMI flow grades were done Fisher's exact test. * DEFUSE model (volume<25cc for ICA or MCA-M1 occlusion and volume <15cc for MCA-M2 occlusion)

Abbreviations :DWI = diffusion-weighted imaging; MRA = magnetic resonance angiography; NA=not applicable; NIHSS = national institutes of health stroke scale; TIMI = thrombolysis in myocardial infarction.

Supplemental table 2. Rates of 90-day mortality by TIMI Flow Grades, Overall and According to DWI Lesion Volume Subgroups.

	TIMI 0-1 (n=35)	TIMI 2 (n=39)	TIMI 3 (n=64)	P
Overall	18 (51.4)	11 (28.2)	7 (10.9)	<0.001
DWI Lesion Volume, tertiles				
<8 cc	3 (42.9)	0 (0.0)	4 (15.4)	0.039
8-32 cc	7 (41.2)	3 (37.5)	0 (0.0)	0.001
>32 cc	8 (72.7)	8 (42.1)	3 (18.8)	0.021
MRA-DWI mismatch status				
Yes *	8 (38.1)	2 (10.5)	4 (9.8)	0.022
No	10 (71.4)	9 (45.0)	3 (13.0)	0.001
NIHSS-DWI mismatch criteria				
NIHSS≥8 and volume ≤25 cc	6 (33.3)	3 (16.7)	3 (9.1)	0.11
NIHSS≥8 and volume >25 cc	10 (76.9)	8 (42.1)	3 (15.8)	<0.001
NIHSS<8	2 (50.0)	0 (0.0)	1 (8.3)	0.13
Very large DWI lesion group				
Volume ≤70 cc	14 (45.2)	5 (16.1)	5 (8.8)	<0.001
Volume >70 cc	4 (100.0)	6 (75.0)	2 (28.6)	0.046

Data are no. (%) of patients with outcomes unless otherwise indicated. Comparisons in favorable outcome between TIMI flow grades were done Fisher's exact test. * DEFUSE model (volume<25cc for ICA or MCA-M1 occlusion and volume <15cc for MCA-M2 occlusion)

Abbreviations :DWI = diffusion-weighted imaging; MRA = magnetic resonance angiography; NA=not applicable; NIHSS = national institutes of health stroke scale; TIMI = thrombolysis in myocardial infarction.

Supplemental table 3. Rates of Hemorrhagic transformation by TIMI Flow Grades, Overall and According to DWI Lesion Volume Subgroups.

	TIMI 0-1 (n=35)	TIMI 2 (n=39)	TIMI 3 (n=64)	P
Overall	11 (31.4)	12 (30.8)	8 (12.3)	0.028
DWI Lesion Volume, tertiles				
<8 cc	2 (28.6)	1 (8.3)	0 (0.0)	0.033
8-32 cc	4 (23.5)	2 (25.0)	4 (18.2)	0.81
>32 cc	5 (45.5)	9 (47.4)	4 (25.0)	0.39
MRA-DWI mismatch status				
Yes *	5 (23.8)	2 (10.5)	4 (9.5)	0.27
No	6 (42.9)	10 (50.0)	4 (17.4)	0.064
NIHSS-DWI mismatch criteria				
NIHSS \geq 8 and volume \leq 25 cc	5 (27.8)	3 (16.7)	4 (11.8)	0.39
NIHSS \geq 8 and volume >25 cc	6 (46.2)	9 (47.4)	4 (21.1)	0.20
NIHSS<8	0 (0.0)	0 (0.0)	0 (0.0)	-
Very large DWI lesion group				
Volume \leq 70 cc	10 (32.3)	10 (32.3)	5 (8.6)	0.004
Volume >70 cc	1 (25.0)	2 (25.0)	3 (42.9)	0.83

Data are no. (%) of patients with outcomes unless otherwise indicated. Comparisons in favorable outcome between TIMI flow grades were done Fisher's exact test. * DEFUSE model (volume<25cc for ICA or MCA-M1 occlusion and volume <15cc for MCA-M2 occlusion)

Abbreviations :DWI = diffusion-weighted imaging; MRA = magnetic resonance angiography; NA=not applicable; NIHSS = national institutes of health stroke scale; TIMI = thrombolysis in myocardial infarction.